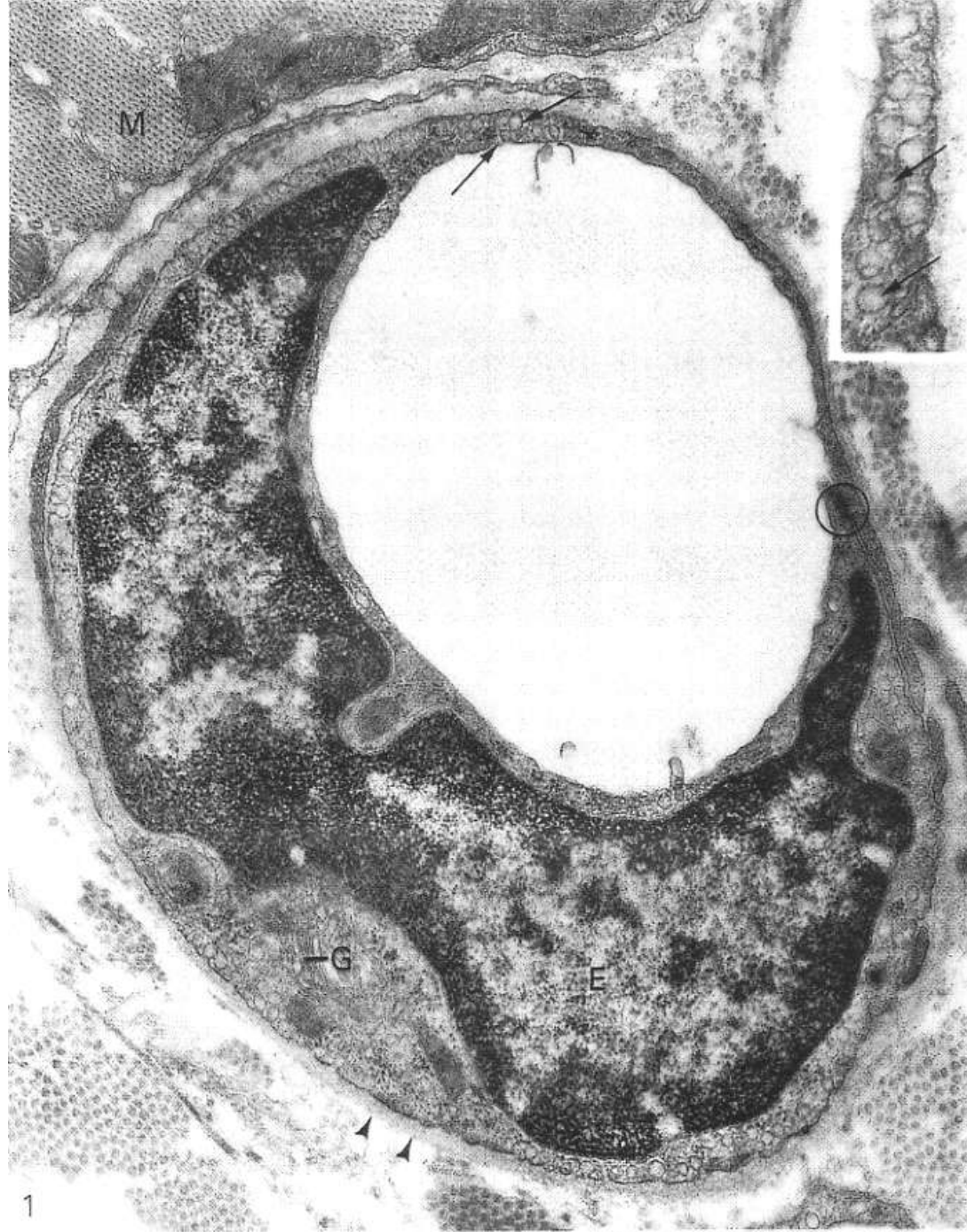


Quelques cellules et tissus

MP et MET

Quelques cellules vues au MET

1



MIC. 1 : 36 000×

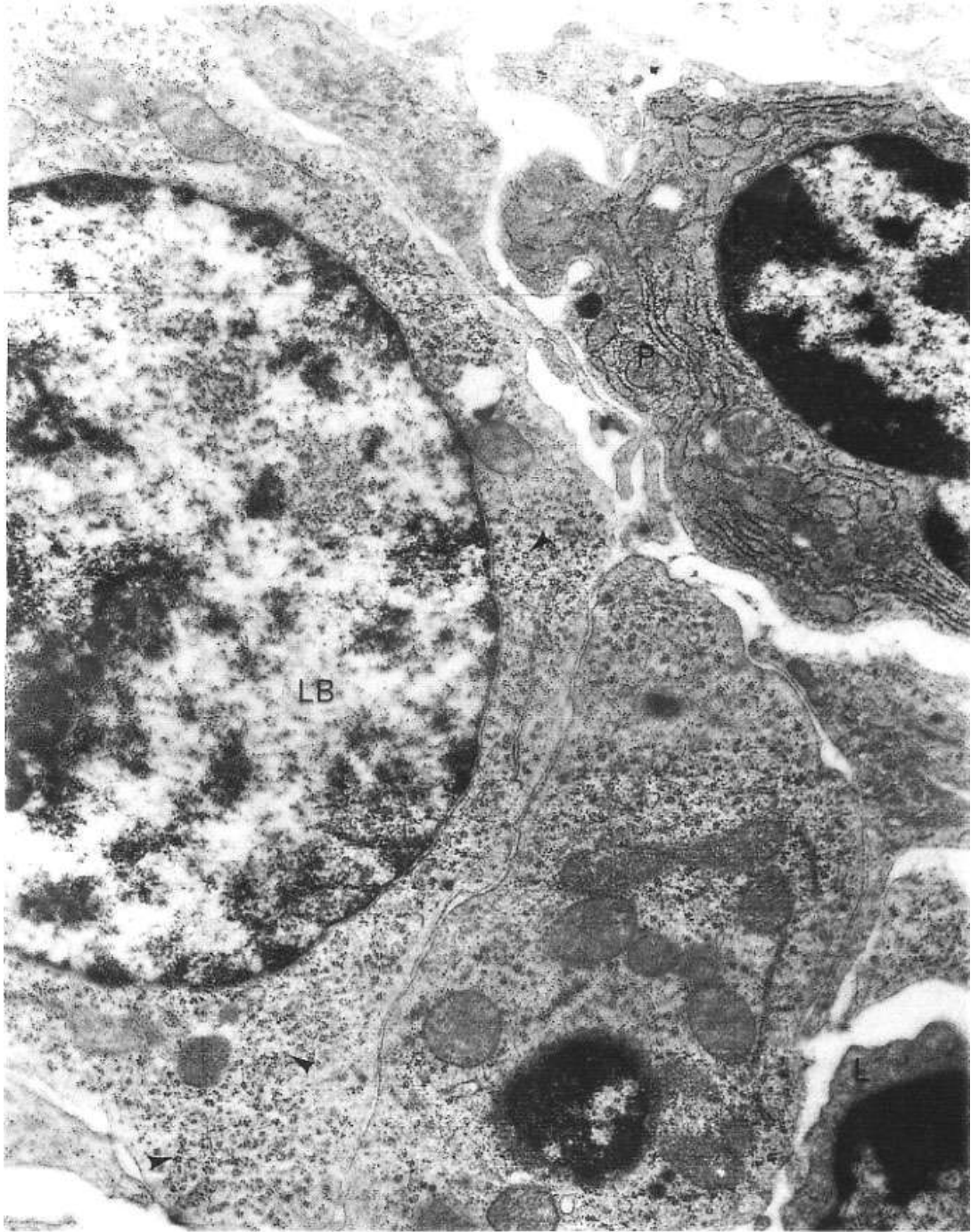
Encart : 75 600×

2

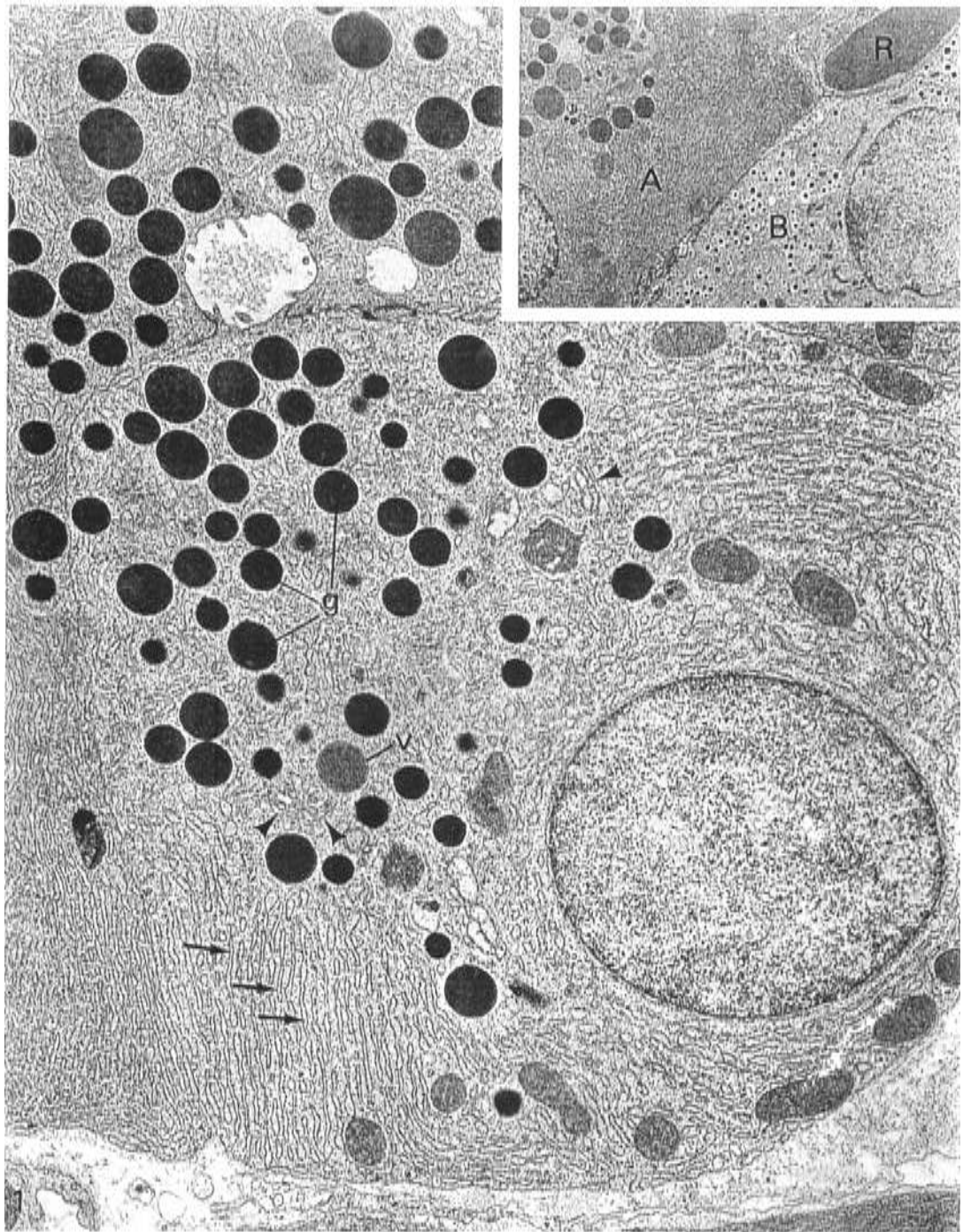


MIC. : 12 900x

3



MIC. : 23 800×



MIC. 1 : 15 600×

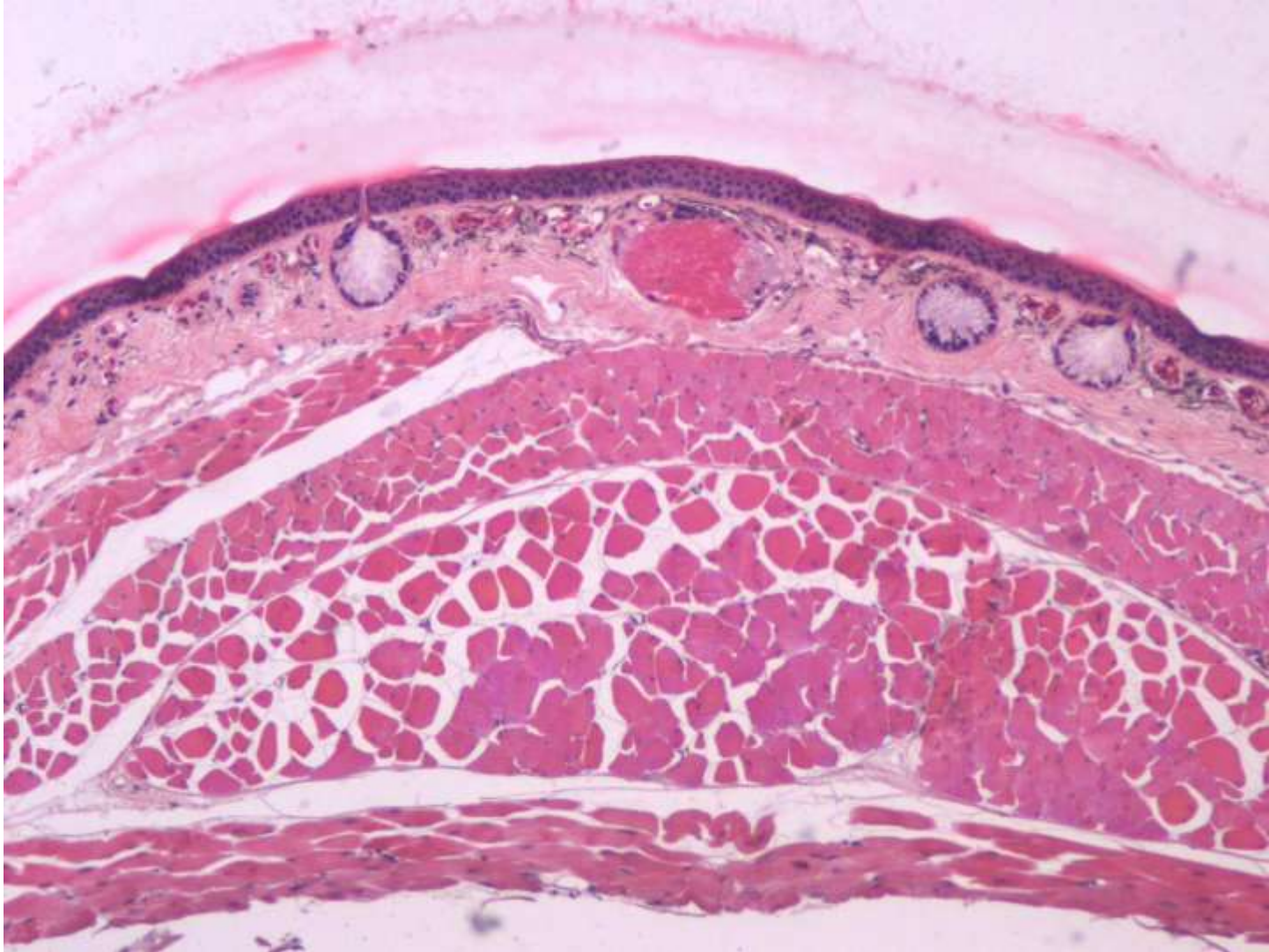
Encart : 4 500×

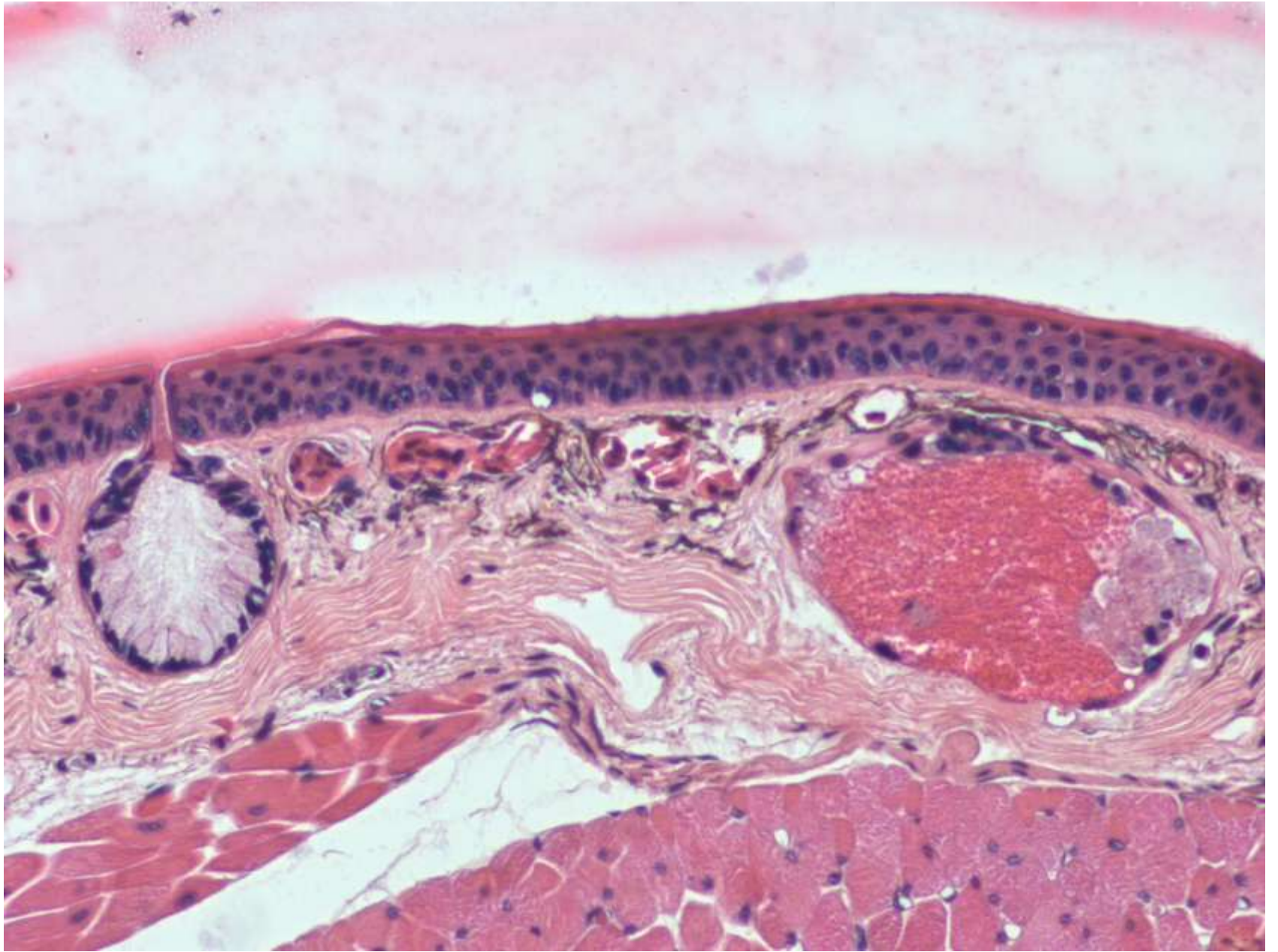
Réponses

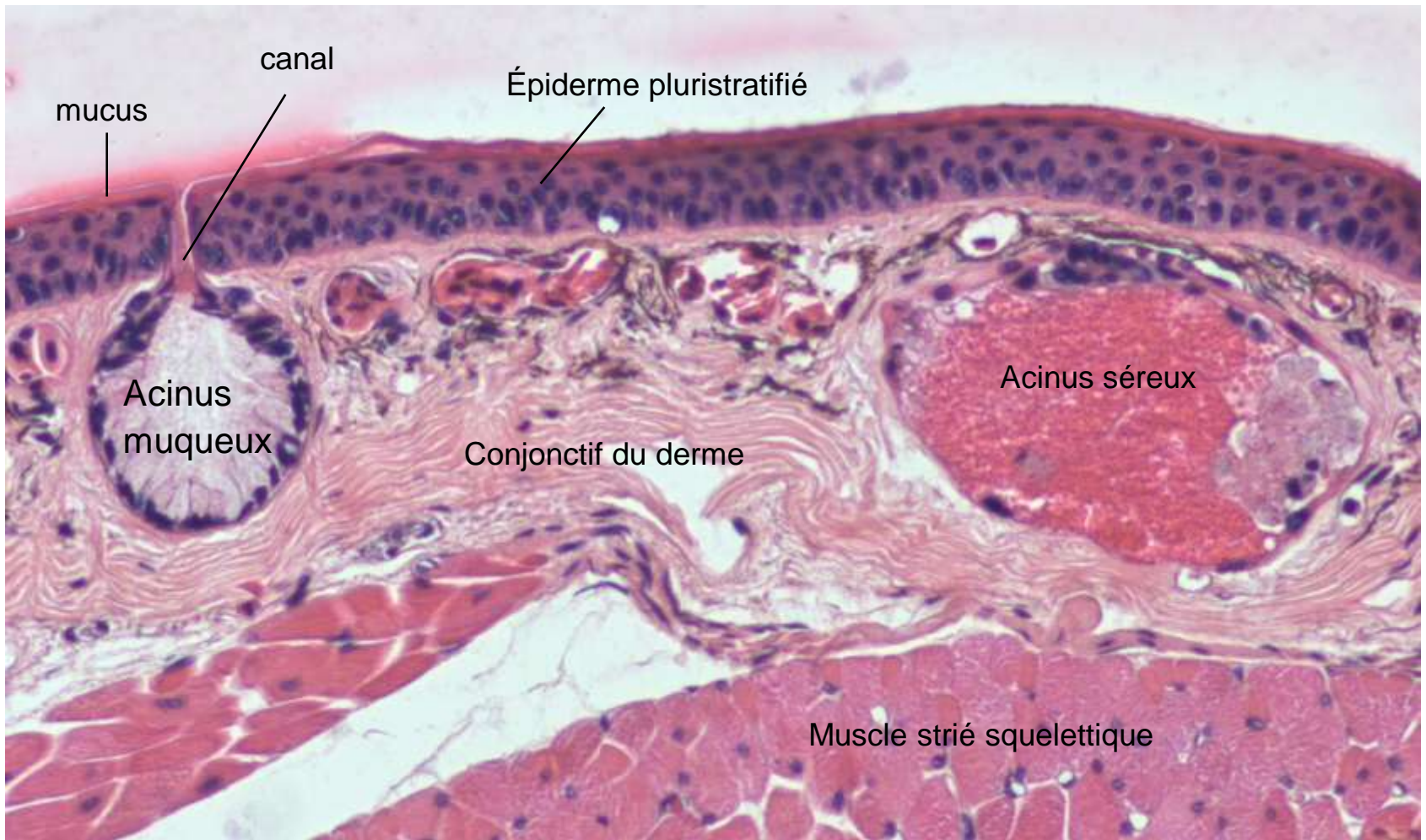
- 1 – capillaire continu
- 2 – cellule caliciforme de l'intestin
- 3 – lymphocyte B et cellule présentant l'antigène (coopération)
- 4 – cellule acineuse du pancréas exocrine

Quelques tissus vus au microscope photonique

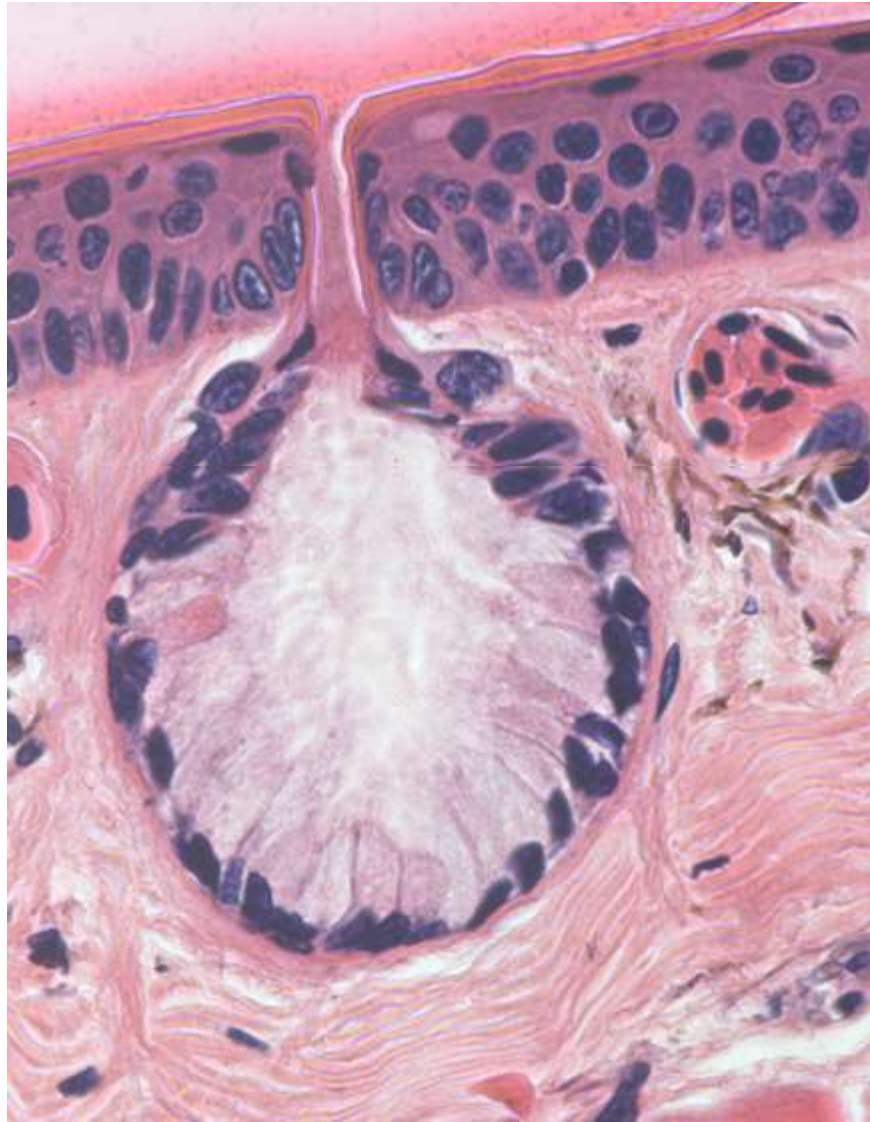
Peau de salamandre





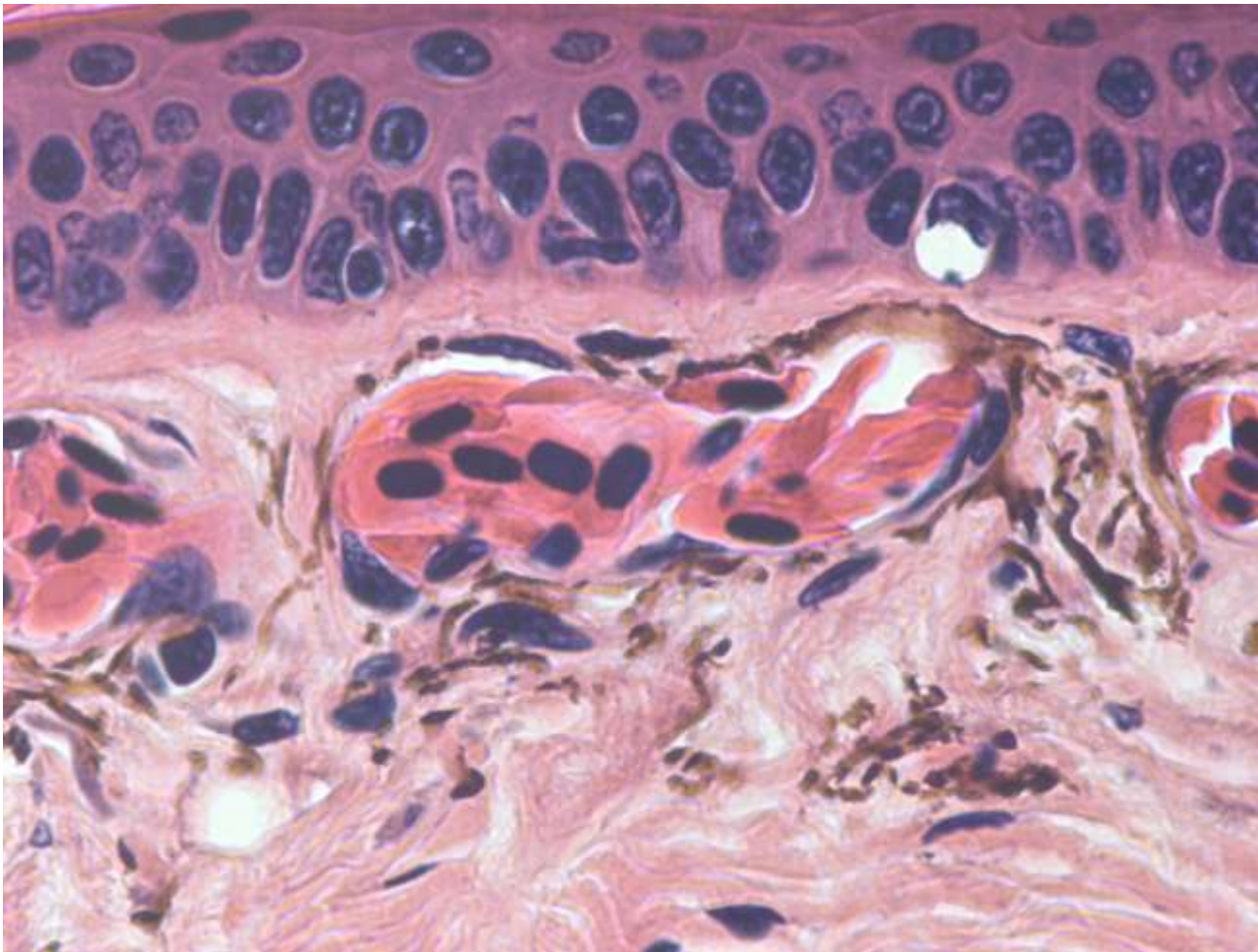


X 100

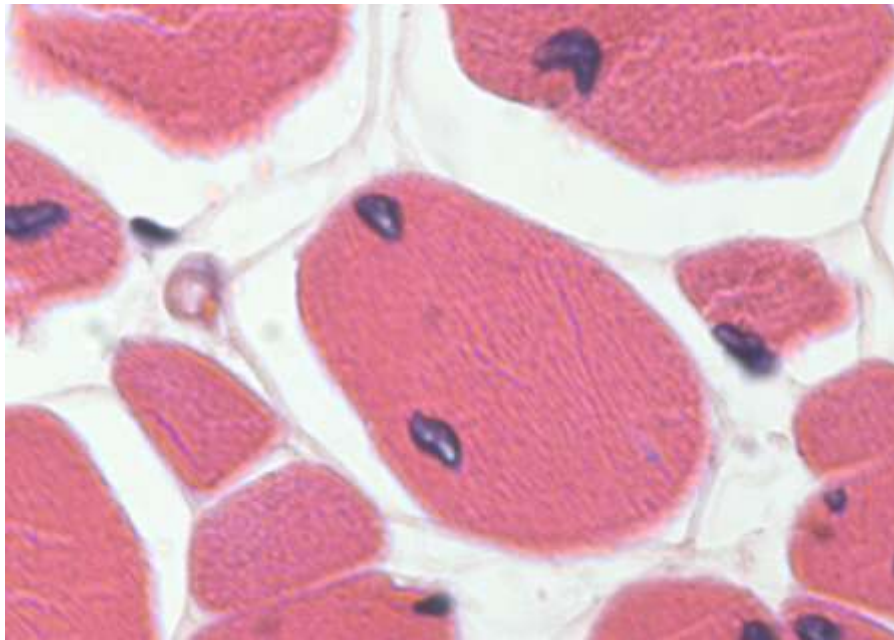


Acinus muqueux

X 400

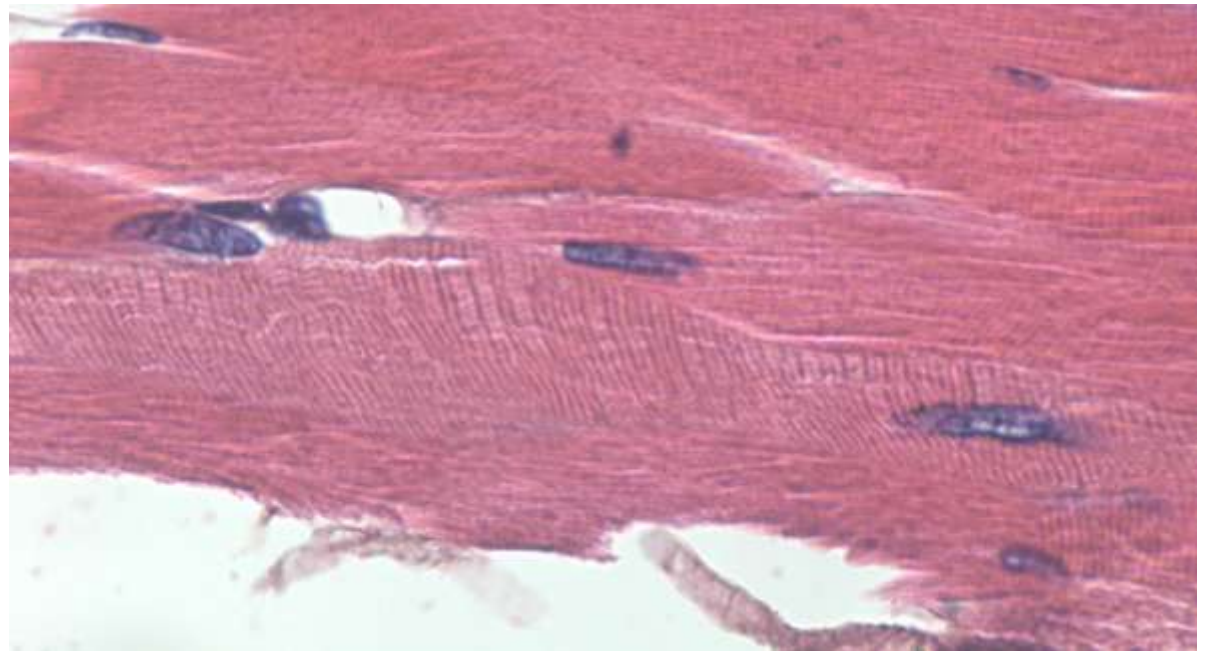


Capillaires avec érythrocytes nucléés (x 400)



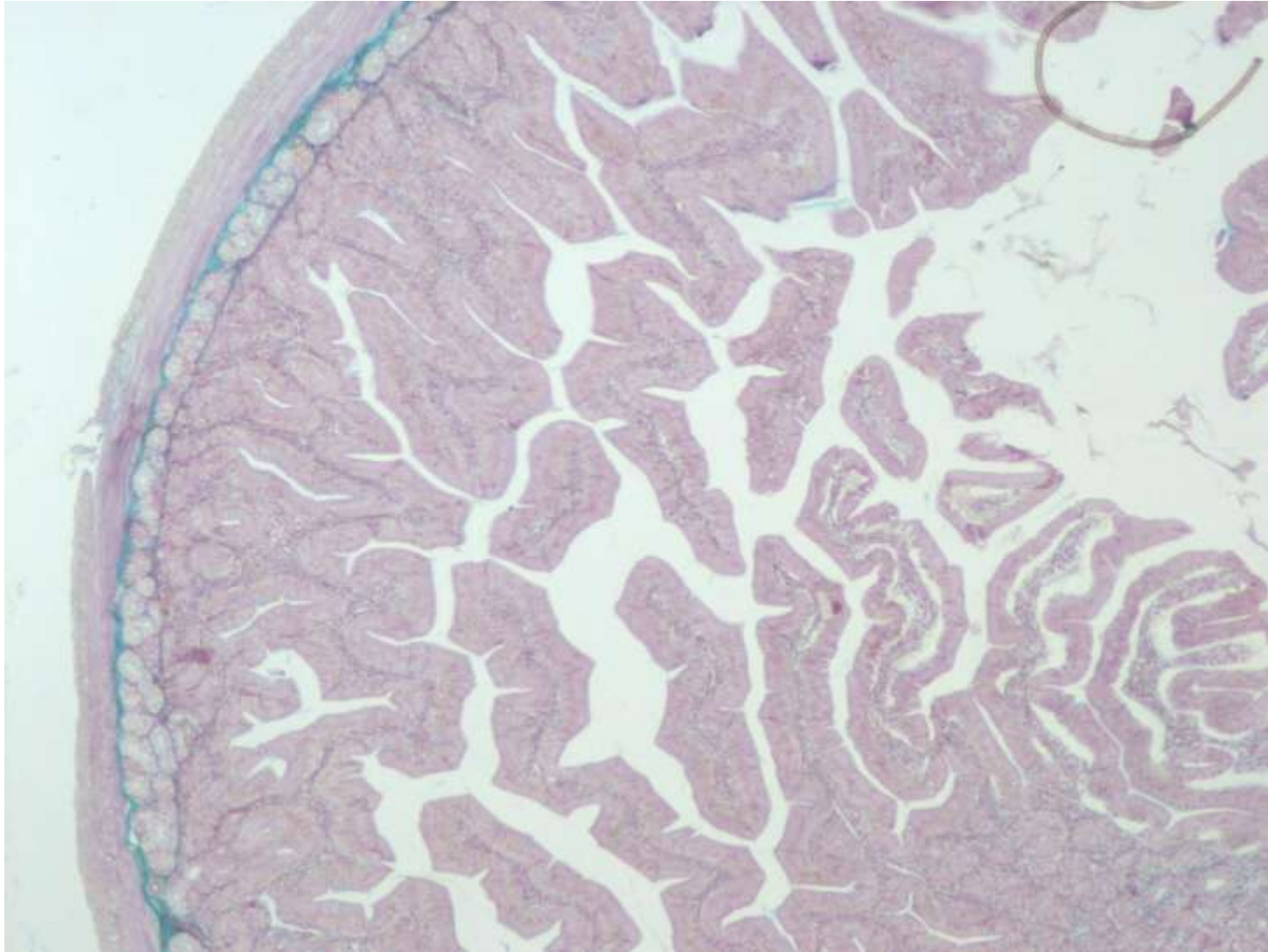
Muscle strié squelettique

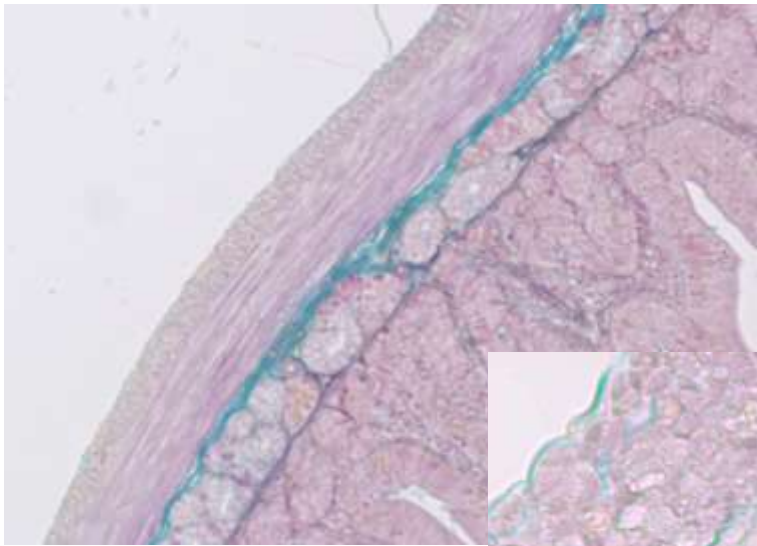
CT



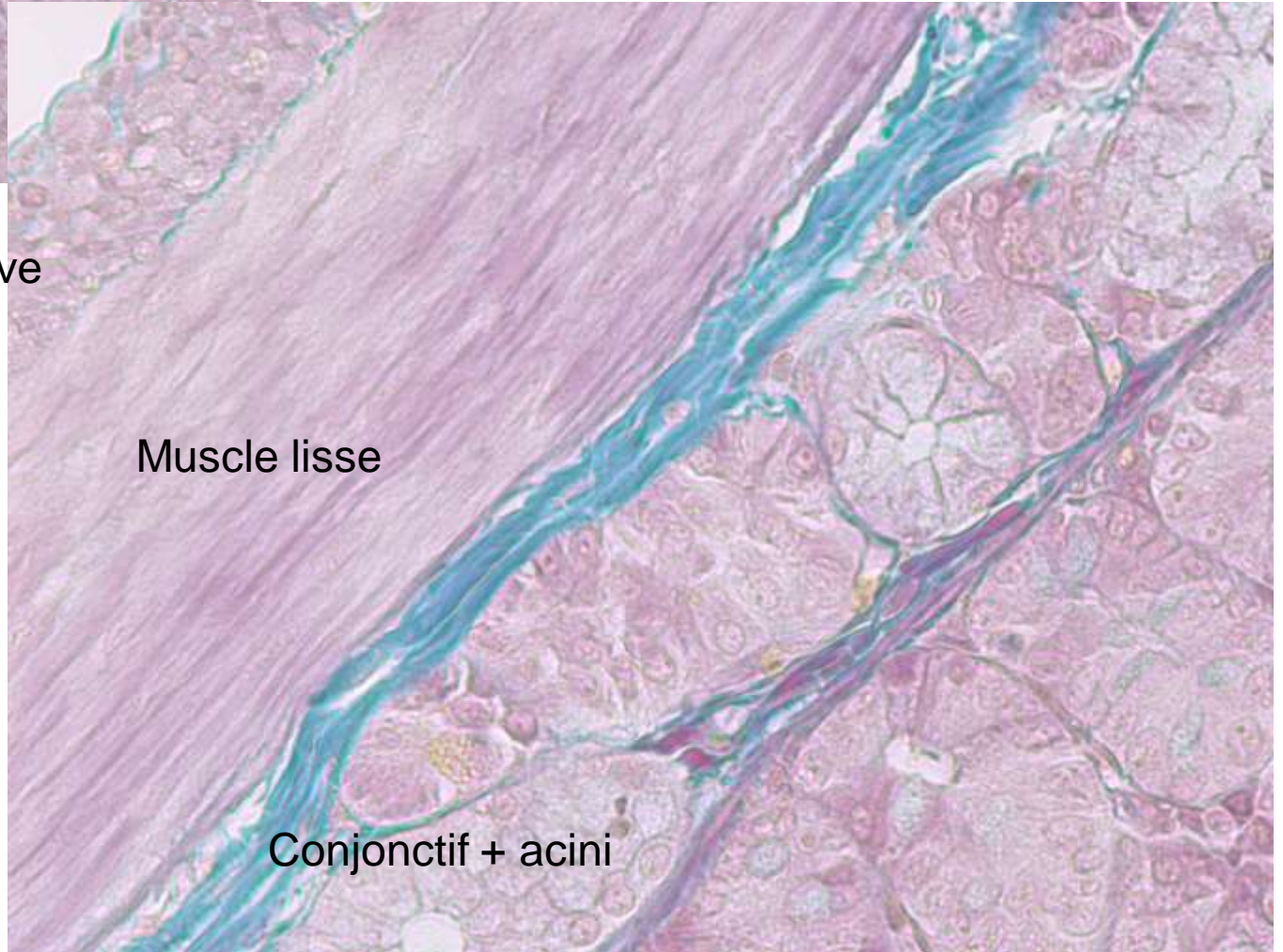
CL

Intestin grêle



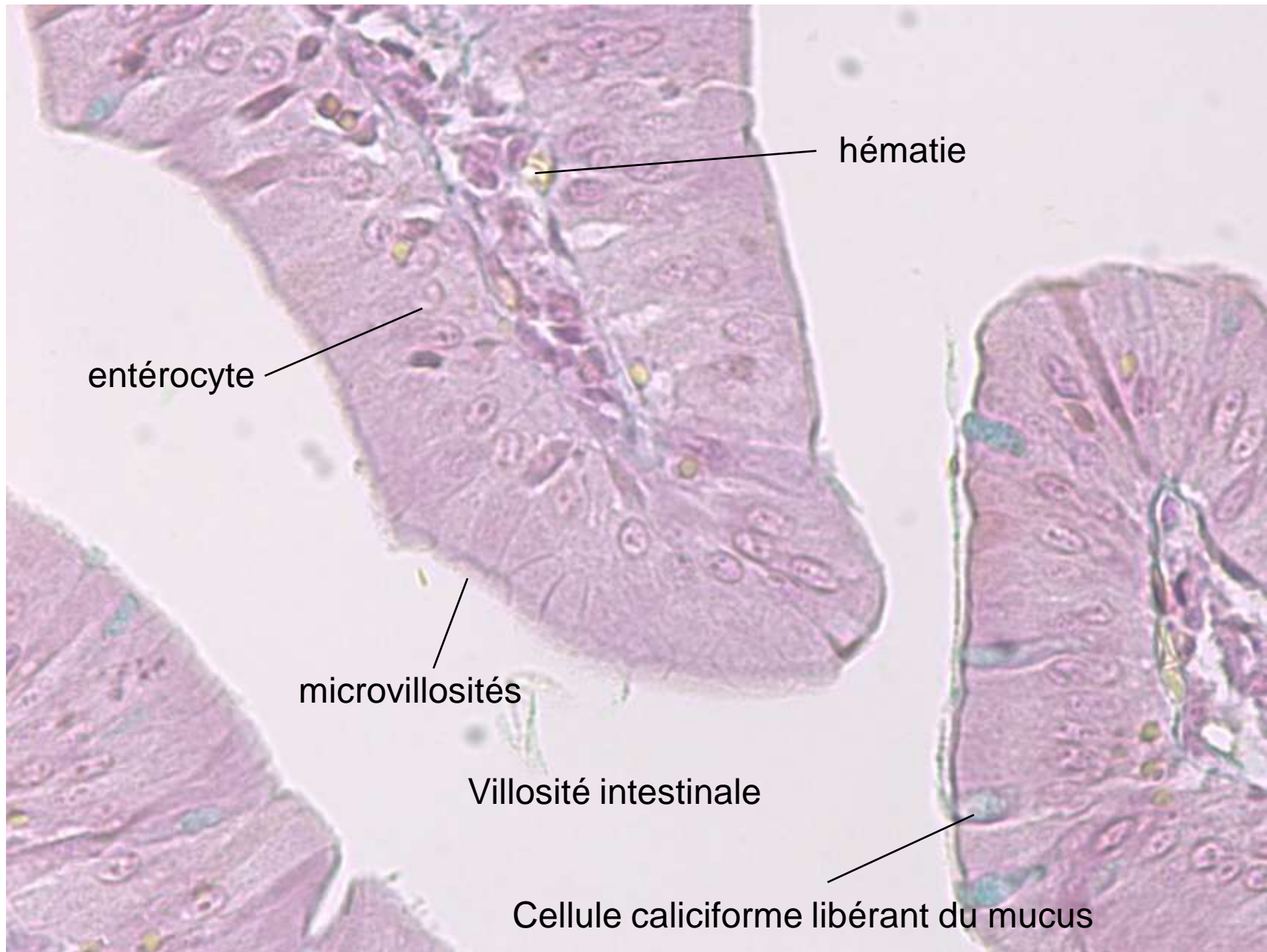


Tunique conjonctive



Muscle lisse

Conjonctif + acini



hématie

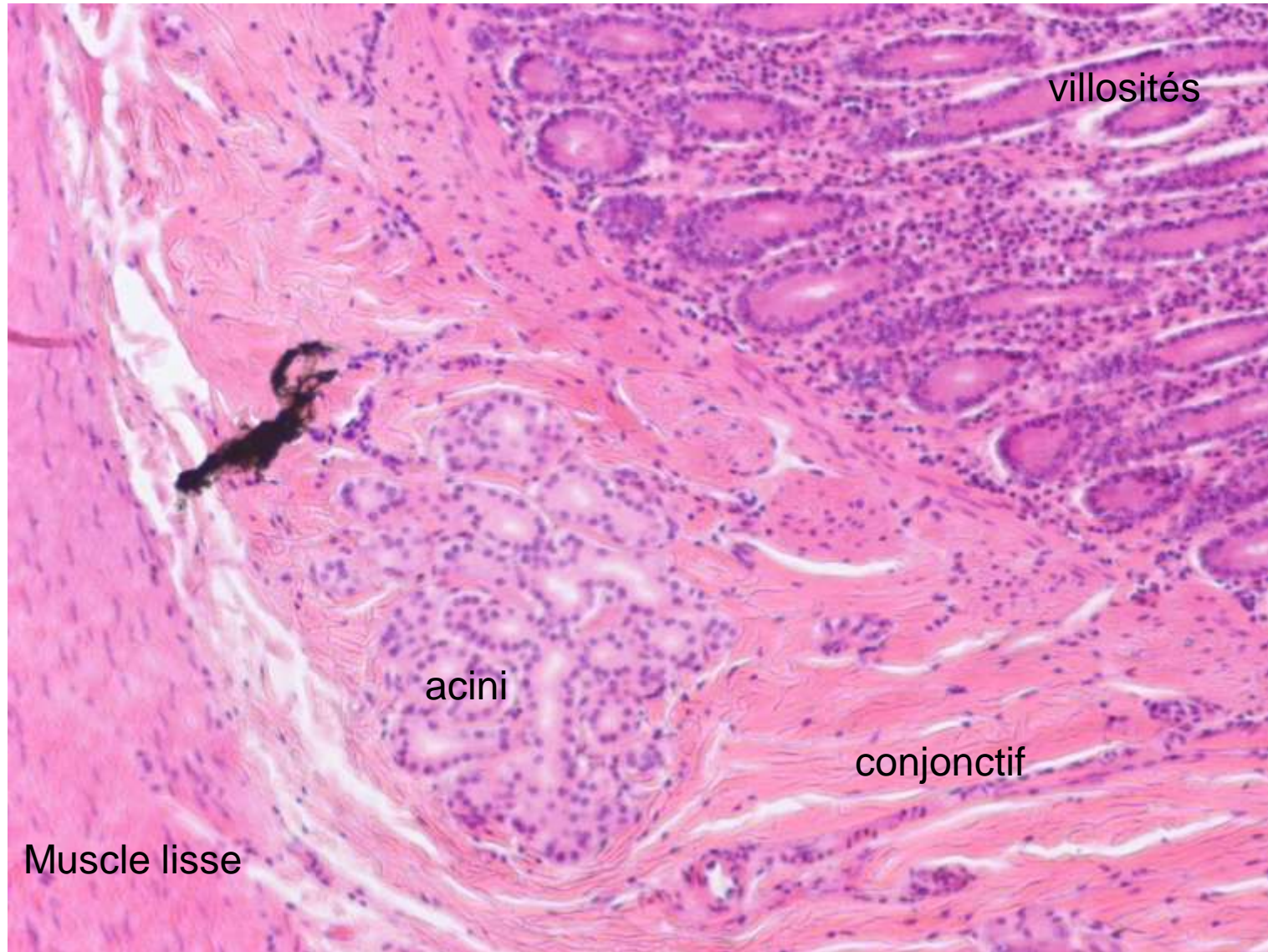
entérocyte

microvillosités

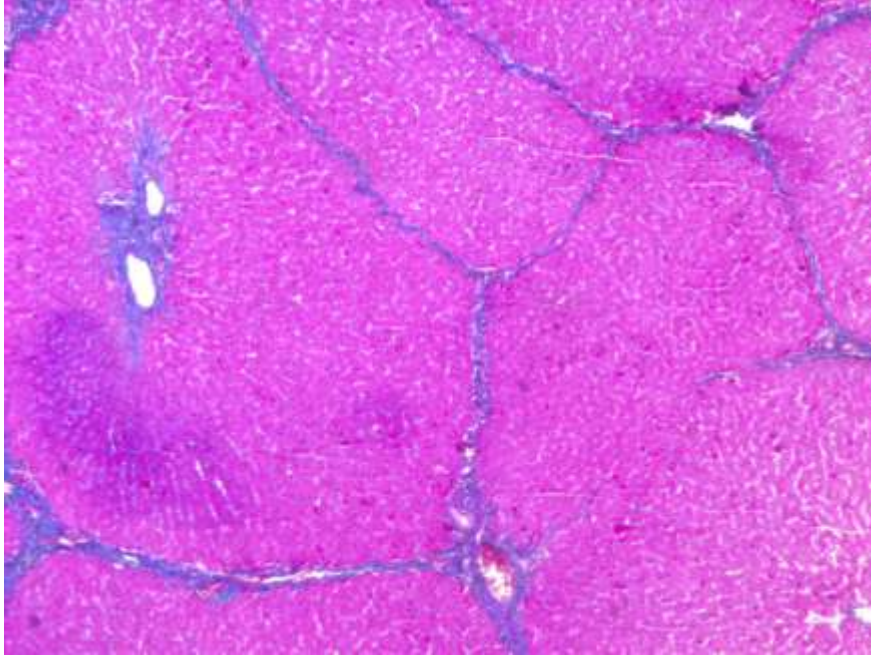
Villosité intestinale

Cellule caliciforme libérant du mucus

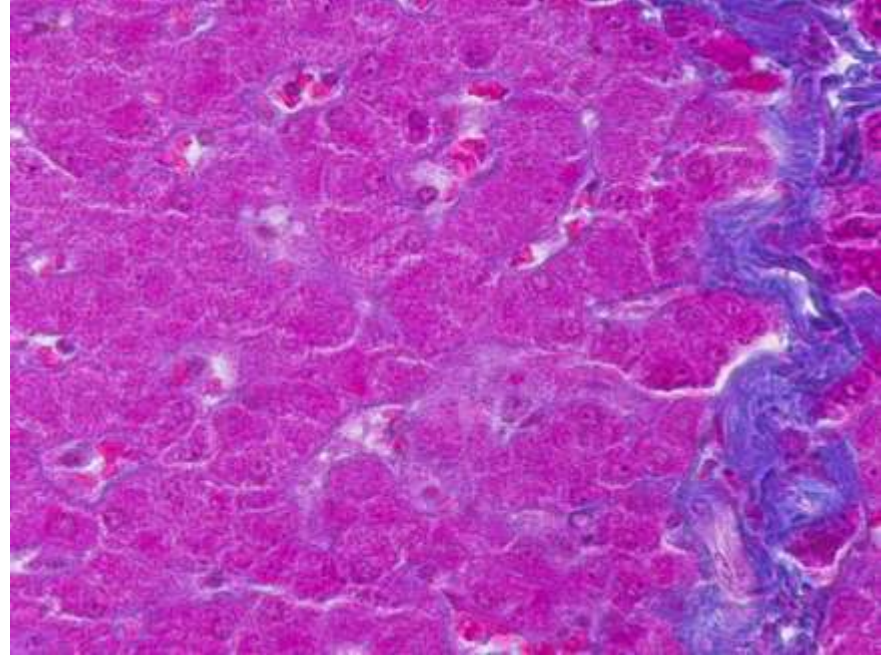
Intestin (autre lame)



Foie



X 10



Hépatocytes et capillaires
+ fibres de conjonctif

X 100