

SA. BATIR
agence Rhône - Alpes
Auvergne

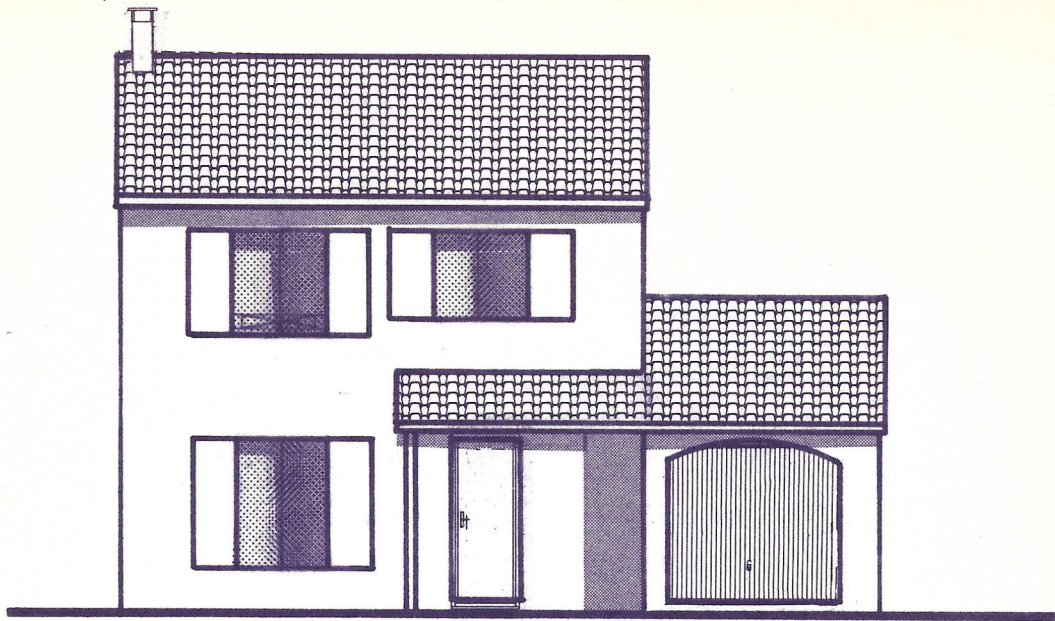


LE DOMAINE DES OLLIÈRES

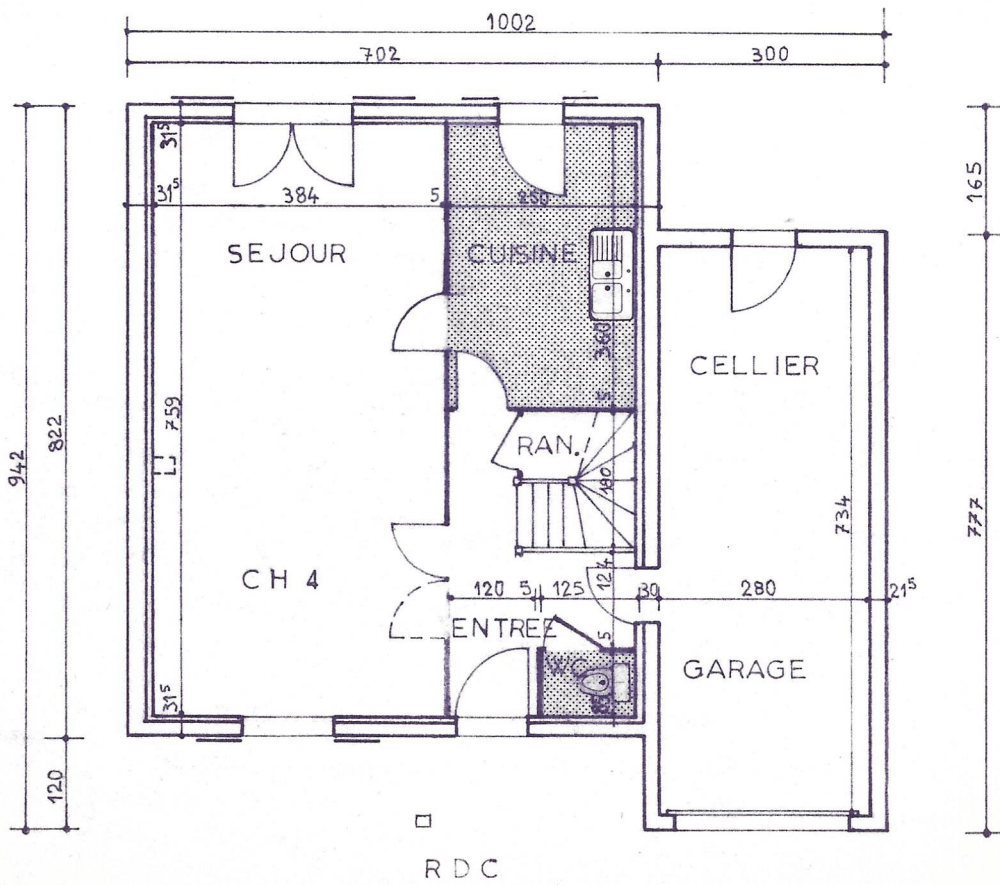
MAISON LUCIA G1

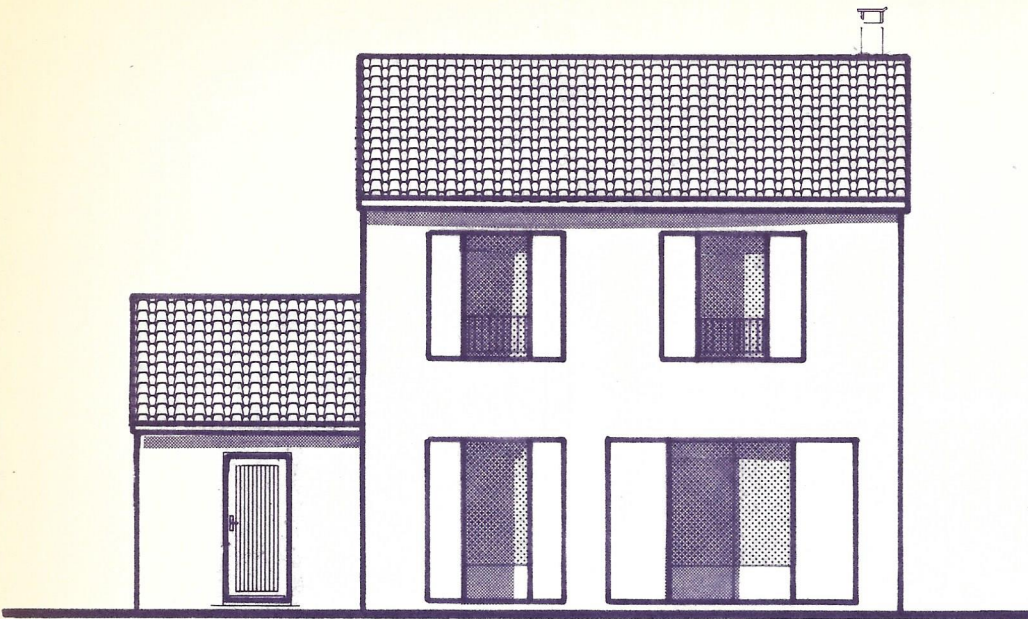
SEPTEMBRE

1983

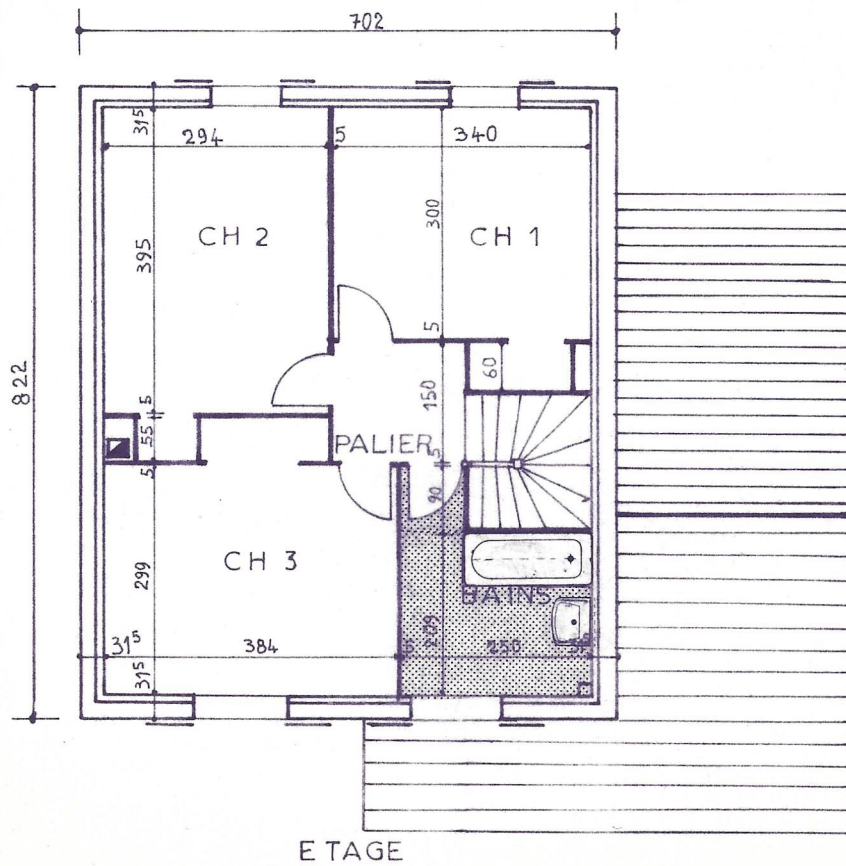


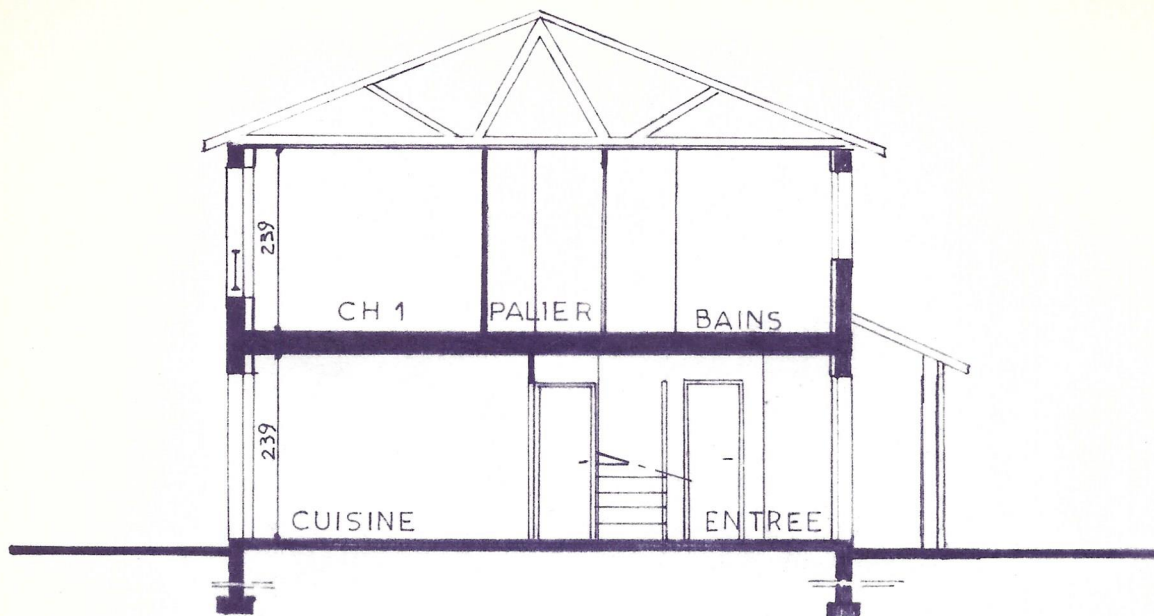
FACADE AVANT





FACADE ARRIERE





COUPE

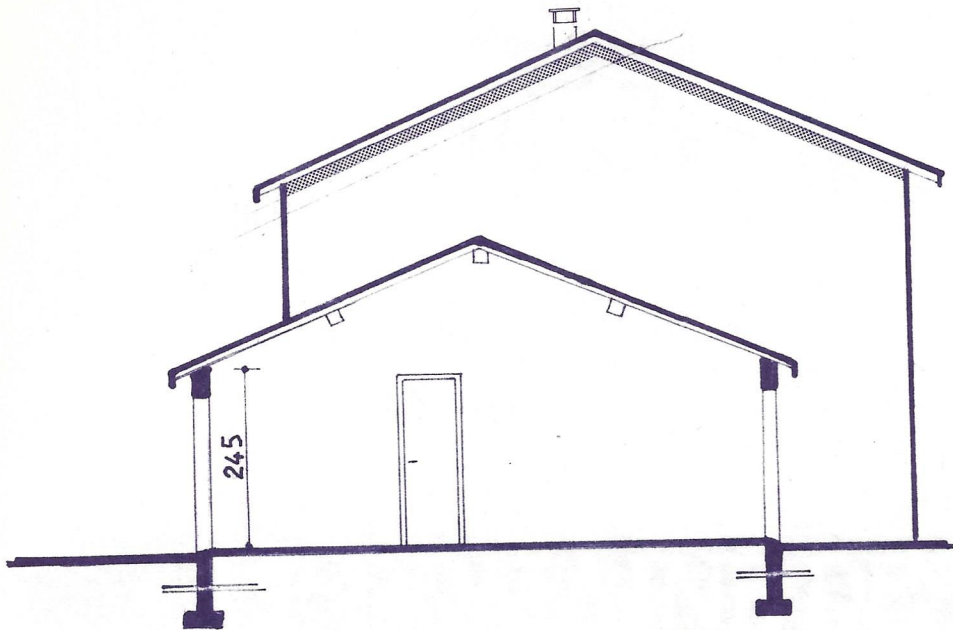
SEJOUR - CH. 4	29,15 m ²
CUISINE	9, m ²
ENTREE	5,80 m ²
WC	1,06 m ²
RANGEMENT ENTREE	0,77 m ²
CHAMBRE 1	10,20 m ²
CHAMBRE 2	11,61 m ²
CHAMBRE 3	11,48 m ²
BAINS	5,97 m ²
PALIER	2,70 m ²
PLACARDS	2,12 m ²

SURFACE HABITABLE : 89,86 m²

SURFACE GARAGE
CELLIER : 20,53 m²

SURFACE TOTALE : 110,39 m²

- SURFACES -



COUPE SUR GARAGE