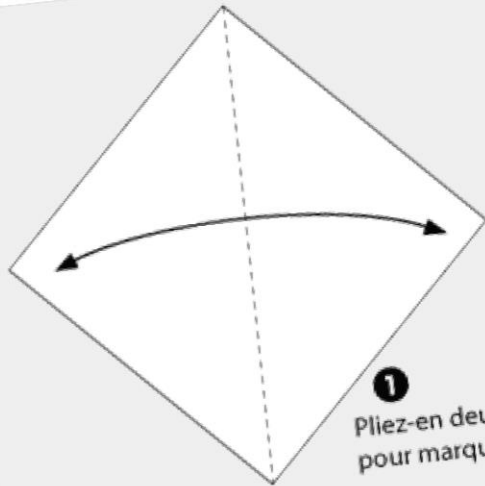
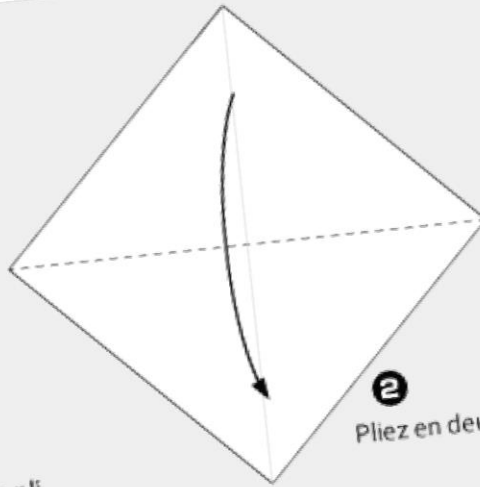


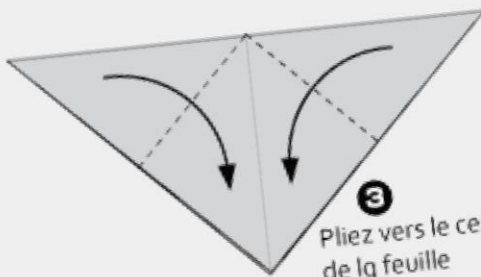
LES 8 DÉFIS DE LA RENTRÉE



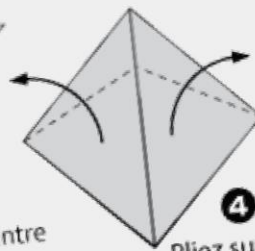
1
Pliez-en deux
pour marquer le pli



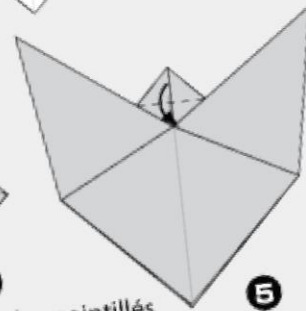
2
Pliez en deux



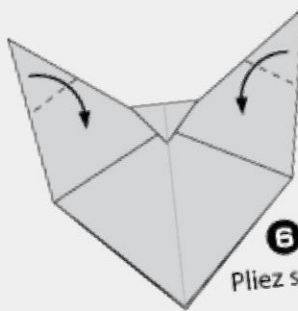
3
Pliez vers le centre
de la feuille



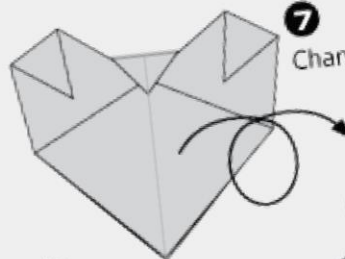
4
Pliez sur les pointillés



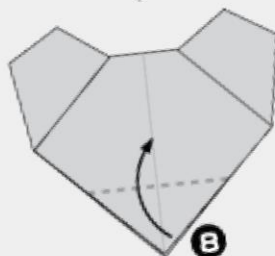
5
Pliez sur les pointillés



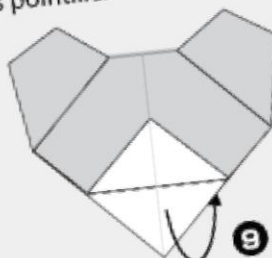
6
Pliez sur les pointillés



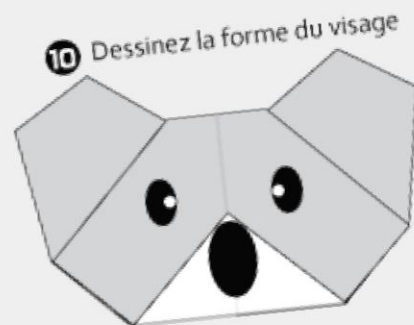
7
Changez de côté



8
Pliez sur les pointillés



9
Pliez la feuille en arrière
sur les pointillés



10 Dessinez la forme du visage

Tête de koala

*Copyright: Fumiaki Shingu

ORIGAMI