

Mini Motif Baby Mittens

vintagenettles.net

Little babies have strong nails that they scratch themselves with often as they don't yet understand their own strength. These mittens are a cute yet practical way of keeping their little new little hands warm and preventing them harming themselves to boot!

Because of the small amounts of yarn required to work these, they make for a great stash and scraps buster. Not to mention a very quick, easy, yet impressive baby shower gift.

Skill Level: Easy (Advanced Beginner)

Finished Measurements:

Each mitt is designed for 0-3month olds
& measures approximately
11.5cm/4.5" long by 7.5cm/3" wide

Tools & Materials:

4mm/US6 Circular Needles/DPNs

Tapestry Needle

DK weight yarn:

Main Colour (MC): 32m/35yds

Contrast Colour (CC): 32m/35yds

Gauge:

6sts x 7rows = 2.5cm/1"
in stockinette in the round

Symbols/Abbreviations:

k = knit

p = purl

kfb = knit front and back

k2tog/Λ = knit two stitches together

ssk/λ = slip one stitch as if to knit, slip the
next stitch as if to purl, knit the two together
through the back loops.

st/sts = stitch/stitches

- Where possible, work in ends as you go.

Fair Isle Mittens: Make 2:

CO 28 sts with a stretchy cast on*.

Join to work in the round, being careful not
to twist work.

1-10. Work 10 rows in k1p1 rib.

11. [kfb, k3, kfb, k4, kfb, k3, kfb] twice.

12-33. Work chart rows 1-22 from bottom up,
making sure to twist in your floats often to
avoid little fingers getting caught.

Plain Mittens: Make 2:

CO 28 sts with a stretchy cast on. Join to work
in the round, being careful not to twist work.

1-10. Work 10 rows in k1p1 rib.

11. [kfb, k3, kfb, k4, kfb, k3, kfb] twice.

12-30. Knit all stitches.

31. [k2tog, knit 14sts, ssk] twice.

32. [k2tog, knit 12sts, ssk] twice.

33. [k2tog, knit 10sts, ssk] twice.

Finishing:

Kitchener* the top of mitten(s) closed.

(Alternatively turn mittens inside out and use a
three needle bind off)

Weave in ends.



To block, insert round balloons and blow them
up a small amount to achieve a soft, round but
even effect.

You may also attempt to stuff the mitten but
not the ribbing with plastic bags to achieve
the correct shape.

Optionally, join the mittens together with a
60cm cable to avoid mitten loss. Cable can be
icord, braided or twisted, or even a soft ribbon.

When putting the mittens on a child with a
cable - ensure that the cable goes through each
sleeve of the child's clothing and is positioned at
the back/behind the neck of the child to avoid a
strangling hazard.

Mini Motif Baby Mittens

vintagenettles.net

How To Upsize The Pattern:

For a fit more suitable for a 3-6month old baby, simply repeat row one of the chart (or work row 12 for the plain mittens) 4 times before continuing with the rest of the chart.

For the Owl and Totoro charts, simply work the 'animal' side plain and the striped side as charted when working the repeats.

For a thumbless fit for 6-12month olds, try using worsted/aran yarn and upsizing to 5mm/US8 needles.



*Special Techniques:

There are a number of techniques in this pattern that a beginner may feel unsure of or be unfamiliar with. The following is a list of techniques and possible tips and tricks you may like to consider:

To CO, consider TillyBuddy's very stretchy cast on:
www.youtube.com/watch?v=iTIBTm0QL6A

Or alternatively, the slightly more advanced but effective twisted german cast on:
www.youtube.com/watch?v=BfFadEumBak

If you're unfamiliar with reading charts for knitting, you may benefit from watching this how to by knitpurlhunter:
www.youtube.com/watch?v=ytbcX5R6G98

Several techniques for how to knit fair isle:
www.knittinghelp.com/video/play/fair-isle-color-knitting

Several of the charts have rather long floats, and you may want to weave in your floats as you go to save little fingers being trapped. Fair Isle float weaving tutorial:
www.youtube.com/watch?v=PsbQ1kKltCo

Kitchener stitch how to:
knitty.com/ISSUEsummer04/FEATtheresa-sum04.html

3 needle bind off how to:
knitty.com/ISSUEfall06/FEATfall06TT.html

Credits:

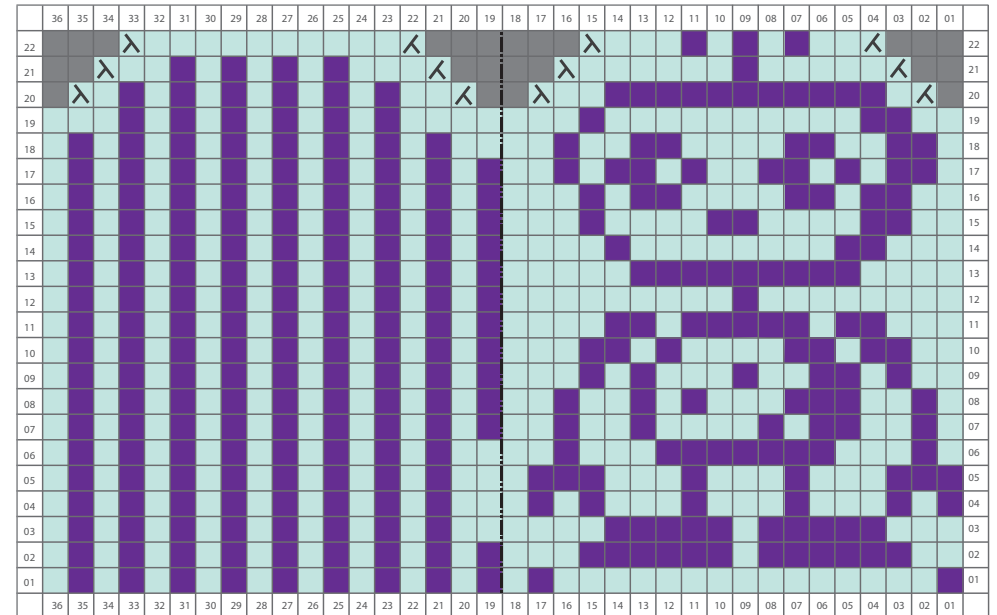
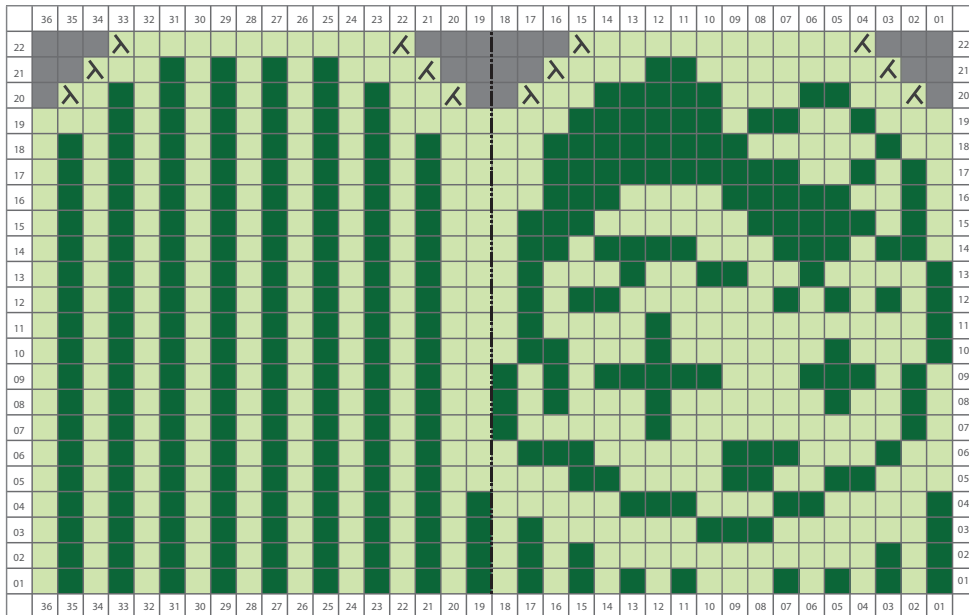
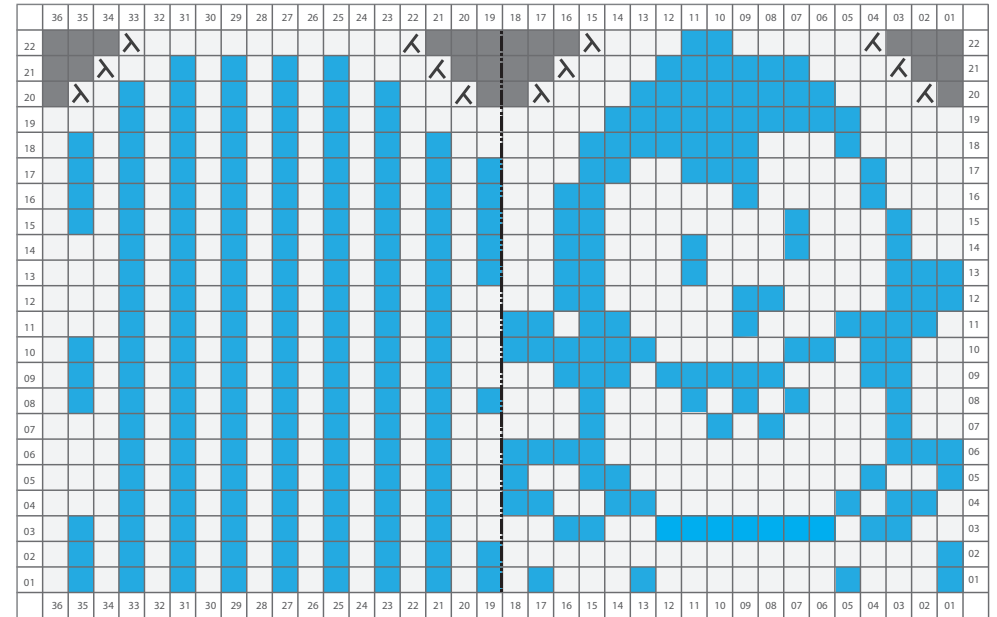
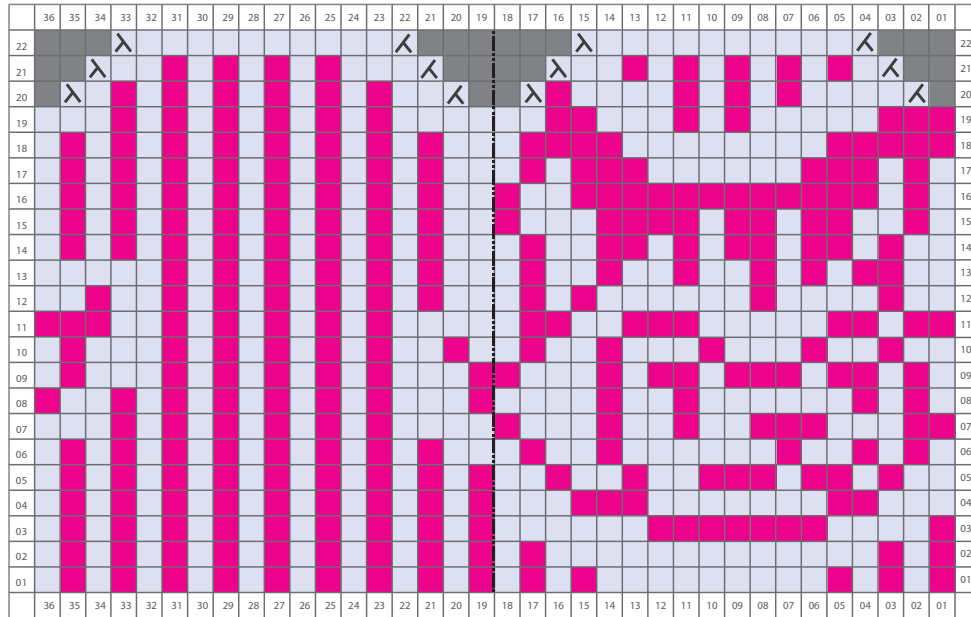
Totoro is a character designed and owned by Studio Ghibli, originally seen in the 1988 film, Tonari no Totoro, (English title: My Neighbor Totoro).

Please don't replicate/reprint this pattern, nor claim it as your own. Rather, link back to vintagenettles.net, or to the ravelry pattern download page. If you'd like to use my charts in your own projects/patterns then please feel free - but ensure that you also share said patterns for free & ensure that you link back and credit me. Thankyou!

If you would like to make and sell finished products made from this pattern, please contact Nett via nett@vintagenettles.net

Mini Motif Baby Mittens

vintagenettles.net



Mini Motif Baby Mittens

