

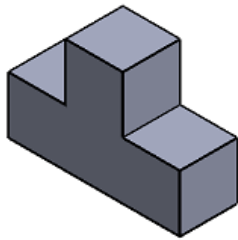
NOM :
Prénom :
Classe :

Exercice
La projection orthogonale



CI 1 : Les techniques et outils de représentation du réel

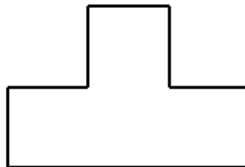
Rappel du cours



vue de dessous



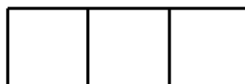
vue de droite



vue de face



vue de gauche



vue de dessus

Compétence :
Décrire la position des surfaces et volumes d'une pièce

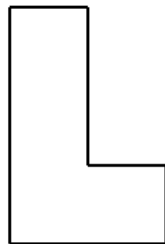
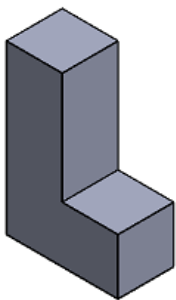
Autonomie			

Consignes :

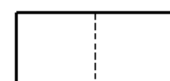
Pour chaque pièces ci dessous,
Repérer par la lettre correspondante les quatre vues manquantes du dessin de définition.

Ouvrir le dossier "projection orthogonale exercice partie 1"

Pièce 1



vue de face



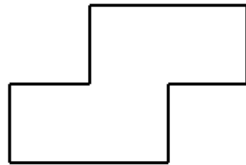
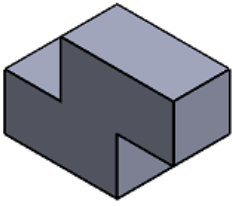
NOM :
Prénom :
Classe :

Exercice
La projection orthogonale

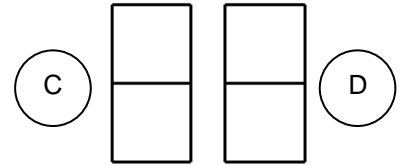
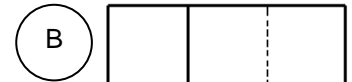


CI 1 : Les techniques et outils de représentation du réel

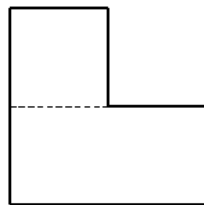
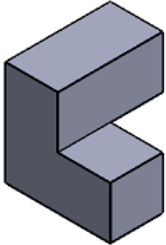
Pièce 2



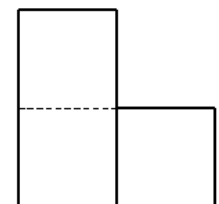
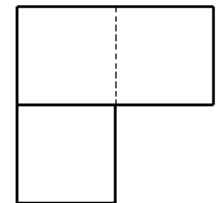
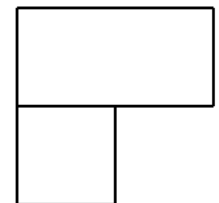
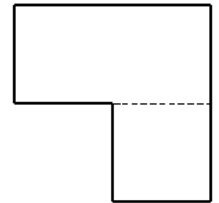
vue de face



Pièce 3



vue de face



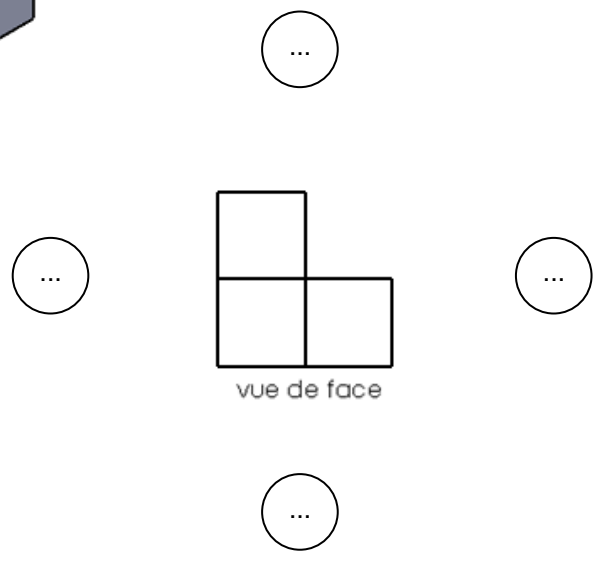
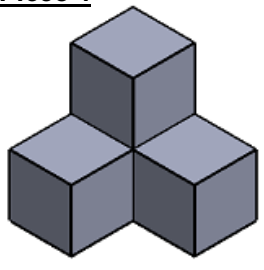
NOM :
Prénom :
Classe :

Exercice
La projection orthogonale

CI 1 : Les techniques et outils de représentation du réel

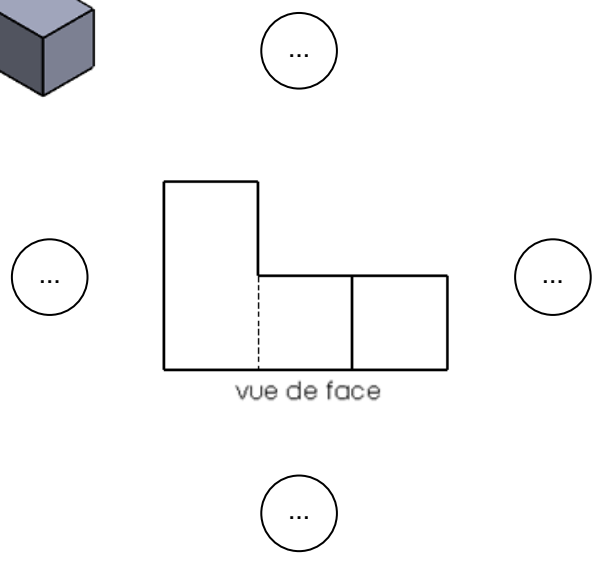
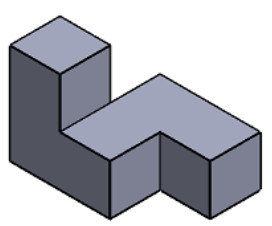


Pièce 4



- (A)
- (B)
- (C)
- (D)

Pièce 5



- (A)
- (B)
- (C)
- (D)

NOM :

Prénom :

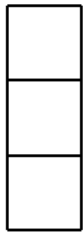
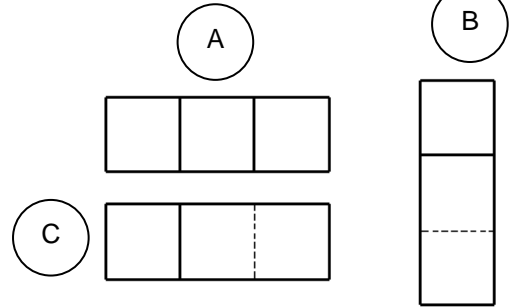
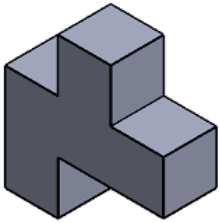
Classe :

Exercice
La projection orthogonale

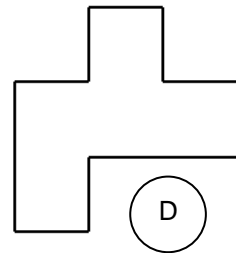
CI 1 : Les techniques et outils de représentation du réel



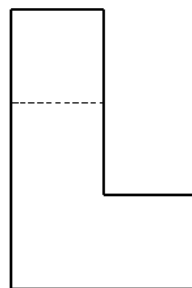
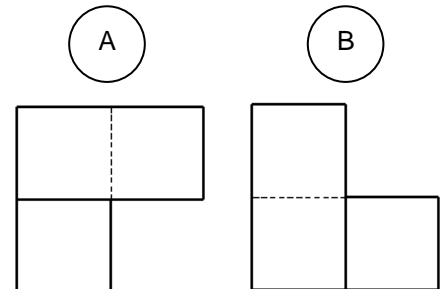
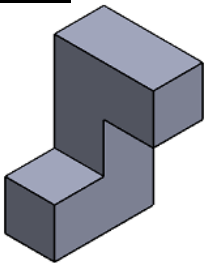
Pièce 6



vue de droite



Pièce 7



vue de gauche

