

Prénom :

Date :

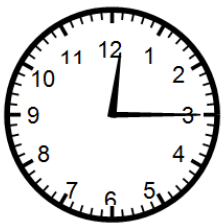
EVALUATION DE MATHEMATIQUES : LA LECTURE DE L'HEURE

	A	AR	EA	NA
Lire l'heure sur une montre à aiguilles ou une horloge				

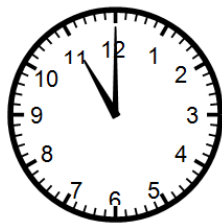
Exercice 1 : Complète le tableau :

Matin	9h	6h	4h	8h	11h	5h	7h	2h	1h
Après midi									

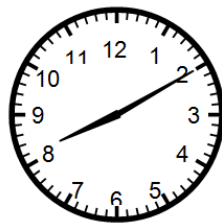
Exercice 2 : Ecris l'heure du matin pour chaque horloge :



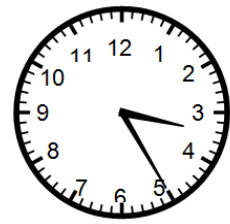
.....



.....

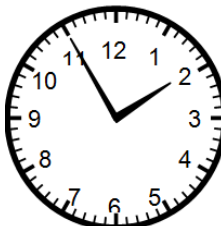


.....



.....

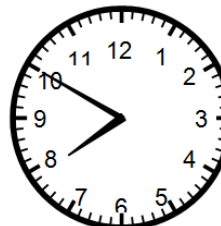
Exercice 3 : Ecris l'heure de l'après-midi pour chaque horloge :



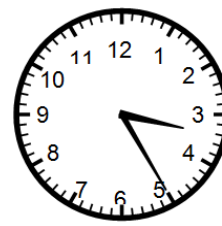
.....



.....

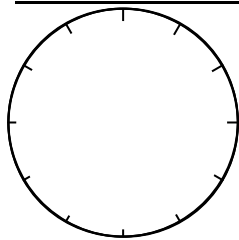


.....

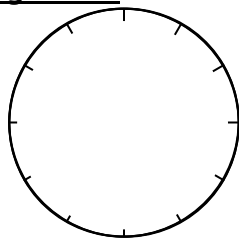


.....

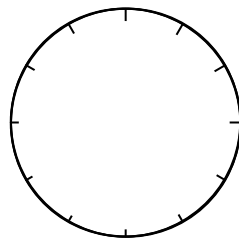
Exercice 4 : Place les aiguilles :



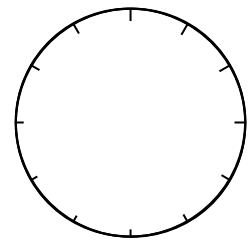
10h30



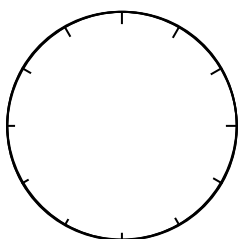
2h et demi



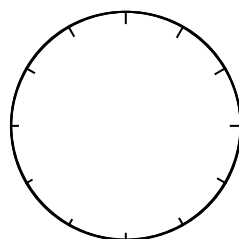
18h15



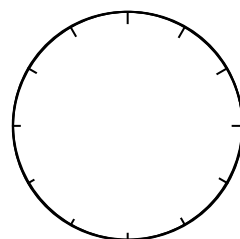
9h et quart



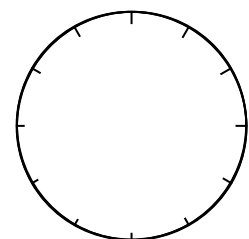
11h25



7h10



16h40



5h moins 25