



**Numération:** les nombres de à



CONSIGNE 1: Colorie le nombre de fourmis demandées.


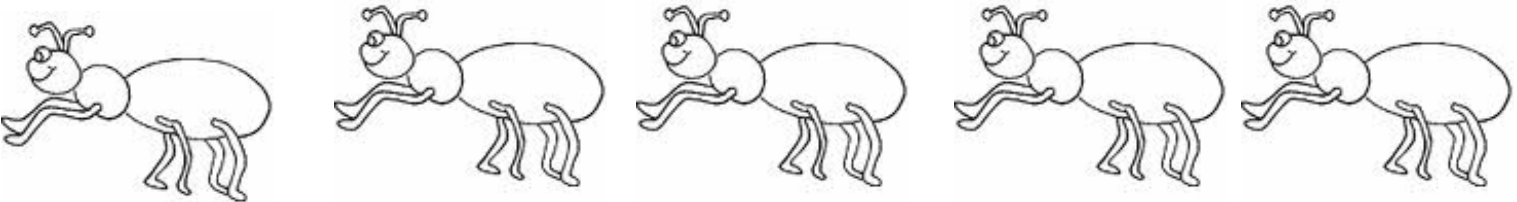

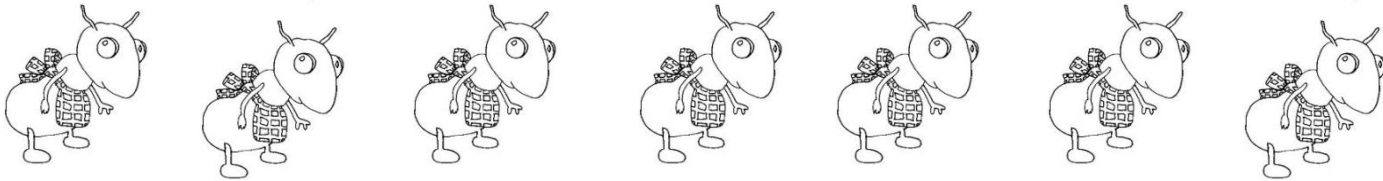
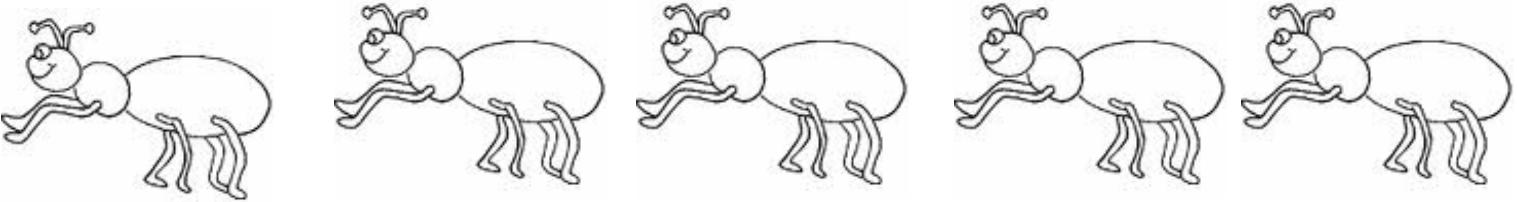
	
	
	
	
	
	
	
	



**Numération:** les nombres  
de à



CONSIGNE 1: Colorie le nombre de fourmis demandées.



**Numération:** la correspondance terme à terme



CONSIGNE 1: Chaque fourmi doit ramener une feuille à manger à la fourmilière. Barre ou complète les feuilles pour que ce soit le cas.

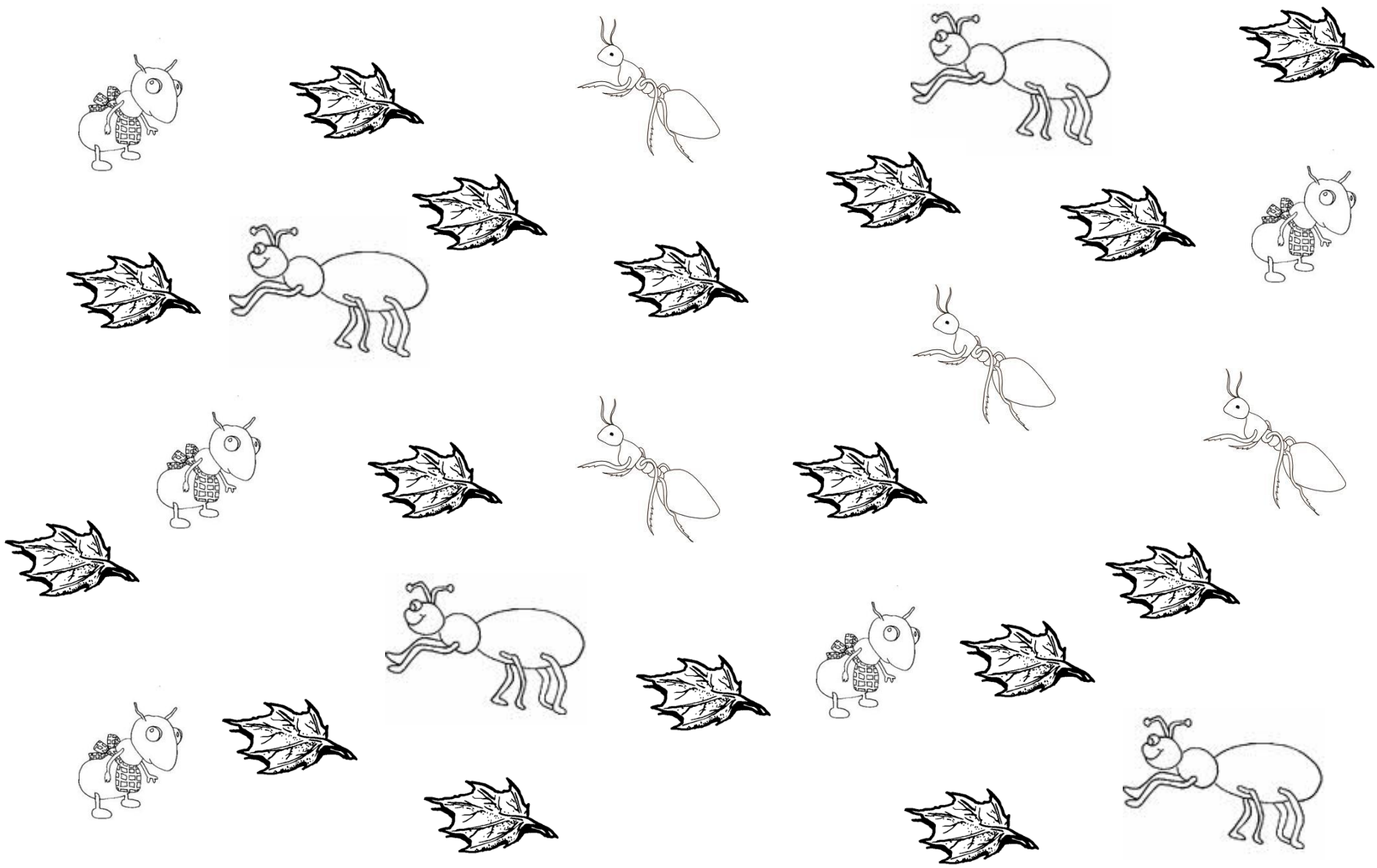
The page contains 15 ants and 15 leaves. The ants are of two types: some are carrying a small basket on their backs, and others are empty. The leaves are simple line drawings of maple-like leaves. The goal is to pair each ant with a leaf.



**Numération:** la correspondance terme à terme

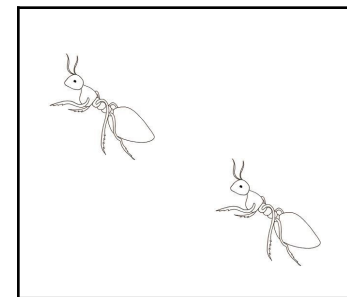
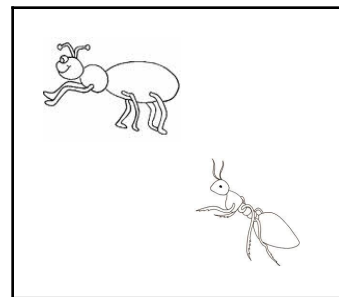
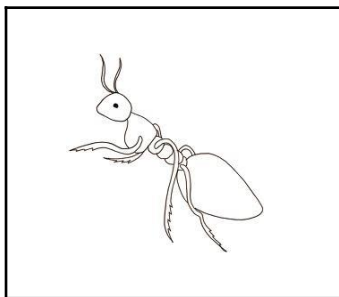
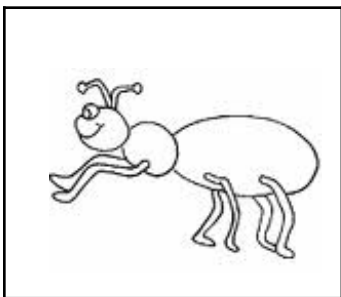
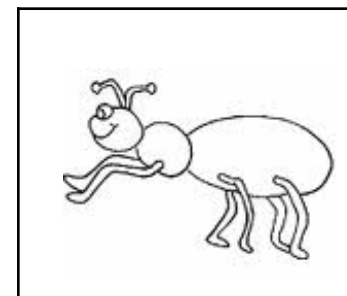
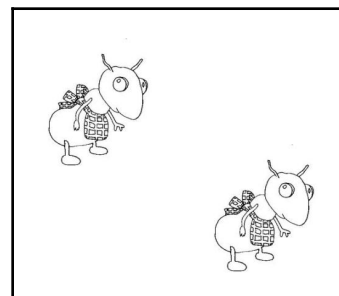
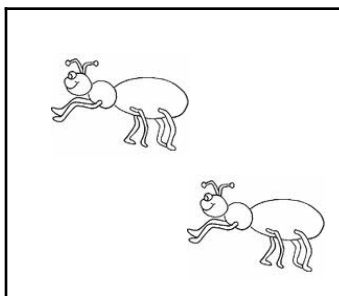
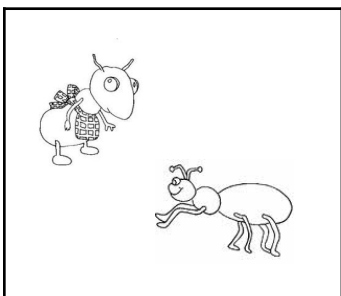
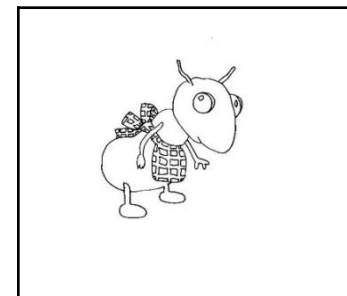
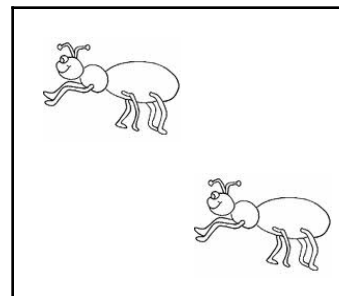
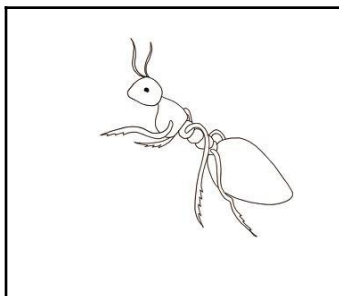
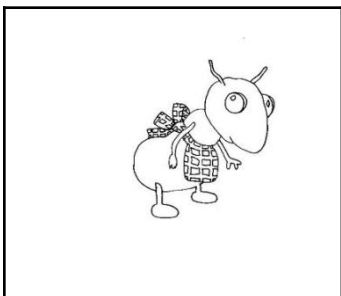


CONSIGNE 1: Chaque fourmi doit ramener une feuille à manger à la fourmilière. Barre ou complète les feuilles pour que ce soit le cas.



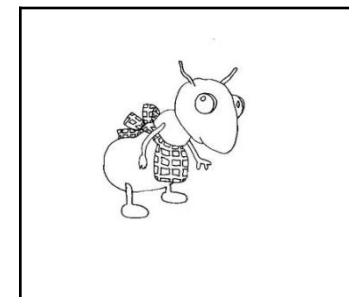
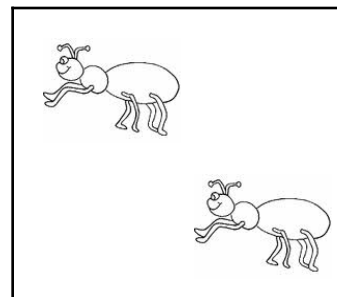
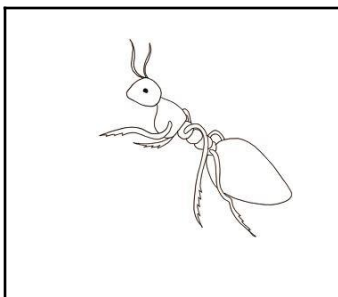
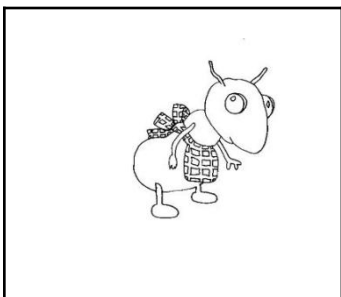


CONSIGNE 1: Colorie les cartes où il y a fourmis.





CONSIGNE 1: Relie les cartes au nombre correspondant.



1

2

