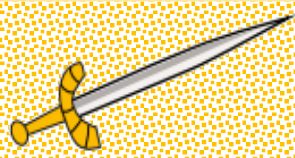
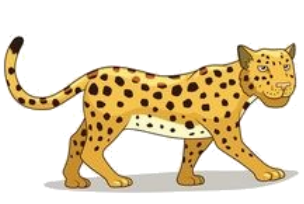


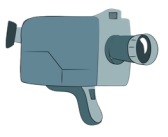
le son [é] de épée



J'écris la syllabe dans laquelle j'entends [é]:



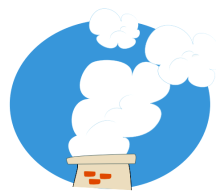
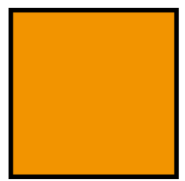
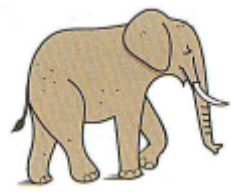
Handwriting practice line with a dot and the syllable 'lé' written in the first cell.



Handwriting practice line with a dot in the first cell.



Handwriting practice line with a dot in the first cell.



Handwriting practice line with a dot in the first cell.

NB: Ce sont les syllabes entendues qui sont demandées.