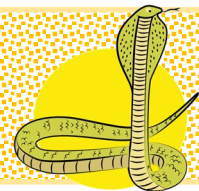
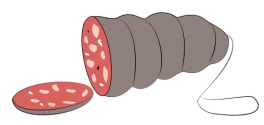


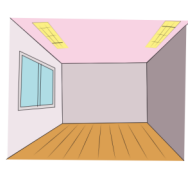
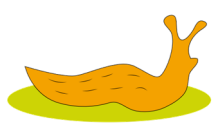
le son [s] de serpent



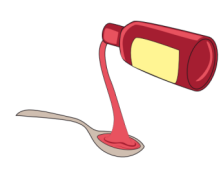
J'écris la syllabe dans laquelle j'entends [s]:



Handwriting practice line with a grid and a dot on the baseline. The first cell contains the syllable 's' written in cursive.



Handwriting practice line with a grid and a dot on the baseline.



Handwriting practice line with a grid and a dot on the baseline.



Handwriting practice line with a grid and a dot on the baseline.

NB: Ce sont les syllabes entendues qui sont demandées, ex: si pour cygne.