

LES SONS

[ã] [ẽ] [õ]

Jeu de plateau de 2 à 4 joueurs avec un dé.

Le joueur arrivant sur une case tire la carte correspondante :



L'élève lit le mot.



L'élève repère le son qui se trouve dans le mot



L'enseignant ou un autre élève lit le mot. L'élève l'écrit.



L'élève repère le son manquant.

LES SONS

[ã] [ẽ] [õ]

arrivée

départ





enfant



chanter



manteau



pantalon



orange



montagne



mouton



cochon



hérisson



lion



pain



moulin



sapin



jardin



lapin



serpent



trente



vent



jambe



ampoule



ballon



avion



pont



dragon



marron



train



ceinture



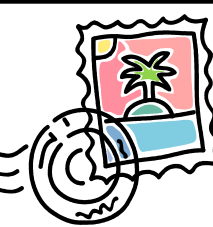
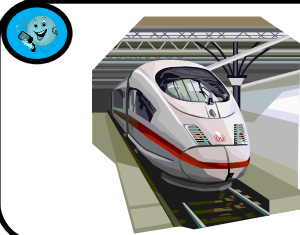
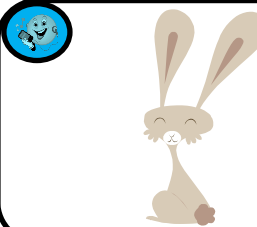
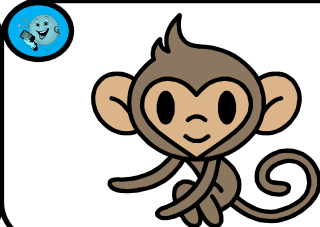
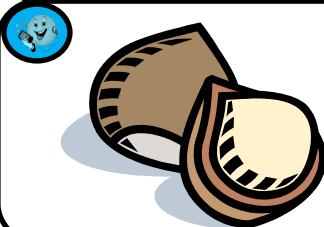
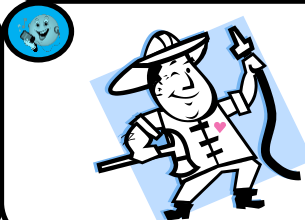
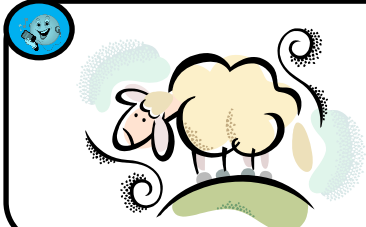
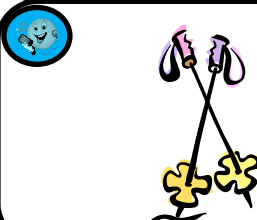
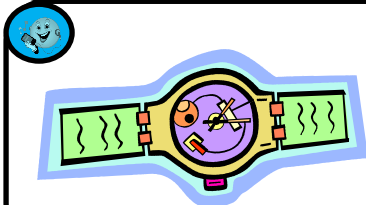
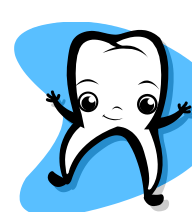
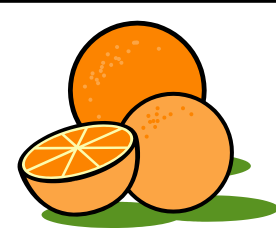
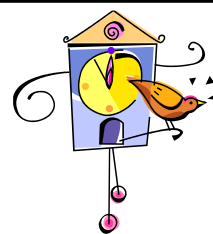
peintre



chemin



timbre





chanter



tante



trente



prendre



vendre



maman



pente



danse



ventre



lance



lion



montre



cochon




contre



bon



salon



garçon



bouton



bâton



ronde



lapin



sapin



linge



moulin



jardin



matin



tinter




câlin



chemin



dinde



.....fant



or.....ge



d.....ser



serp.....t



tr.....te



p.....dule



ch.....ter



m.....teau



v.....tre




p.....talon




m.....tre



.....ze



cami.....



garç.....



m.....stre



drag.....



ball.....




bout.....




hériss.....



coch.....



p.....ceau



requ.....



chem.....



sing.....



qu.....ze



jard.....



moul.....



lap.....



mat.....



d.....don