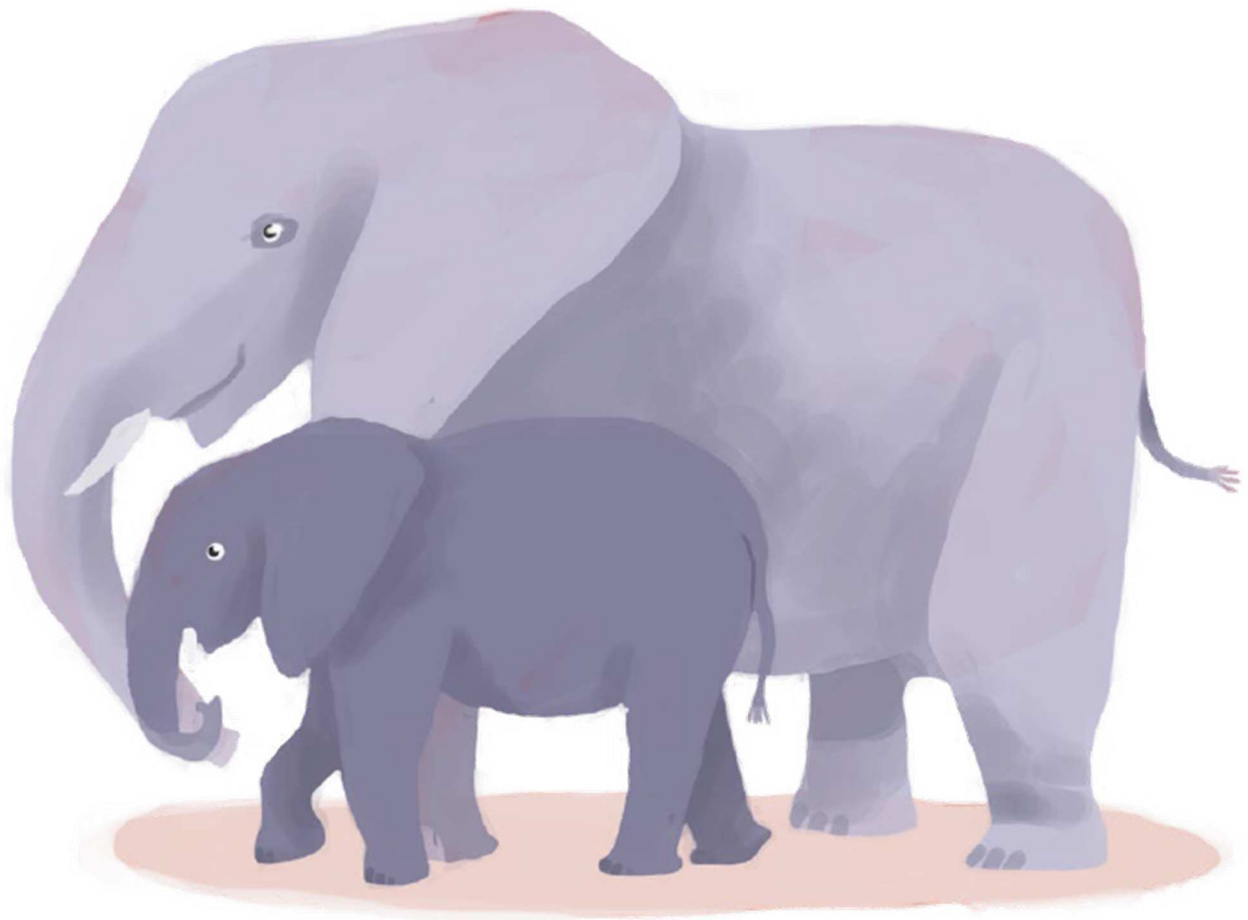


PH ph ph



les éléphants

g



la girafe

ge



j



le pigeon

gu



la guitare

C



S



la cerise

Ç



S



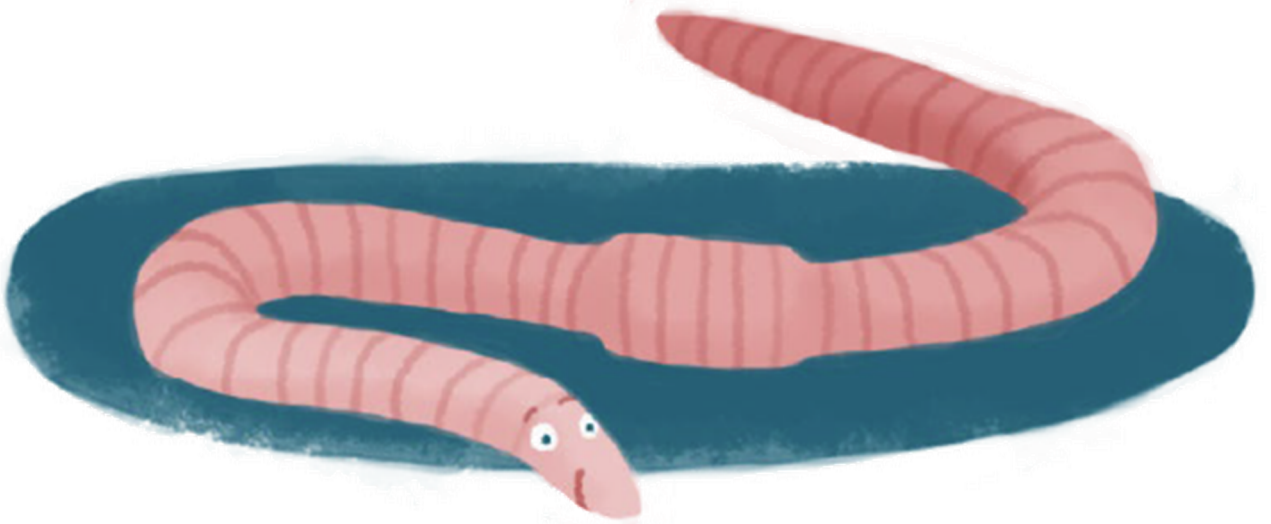
le garçon

ES es es



l'escargot

ER er er



le ver

EL el el



le miel

EC

ec

ec

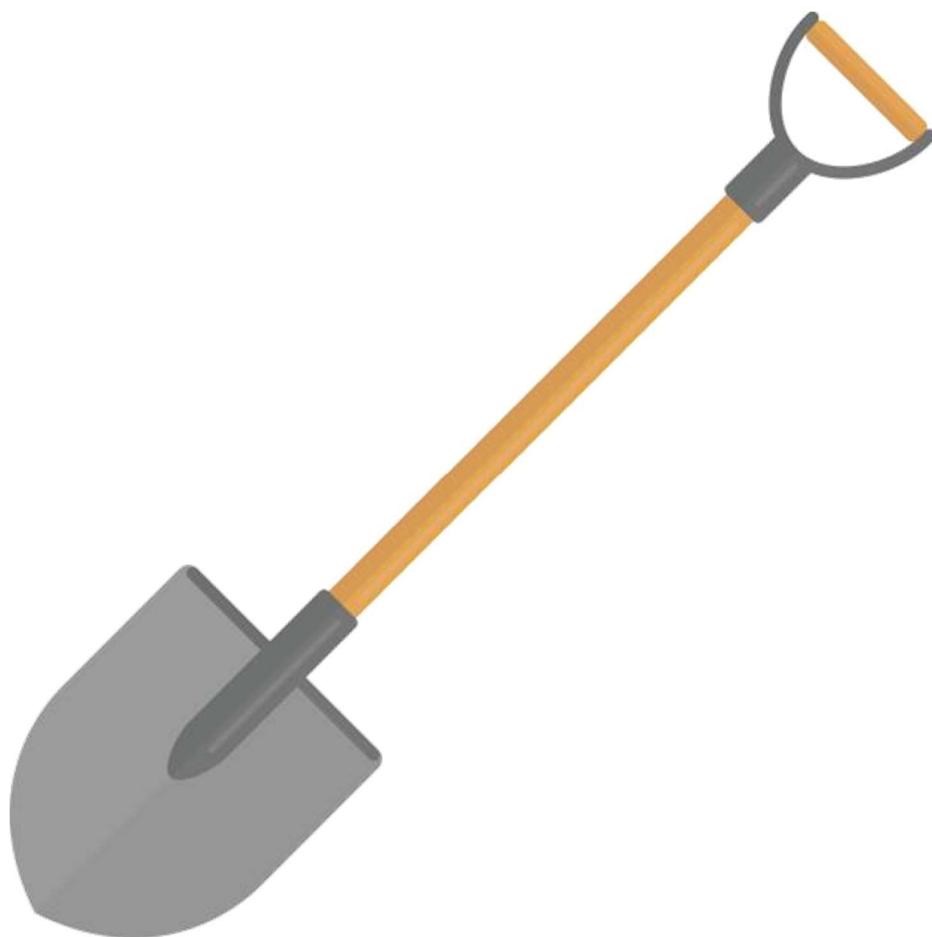


le bec

ELLE

elle

elle

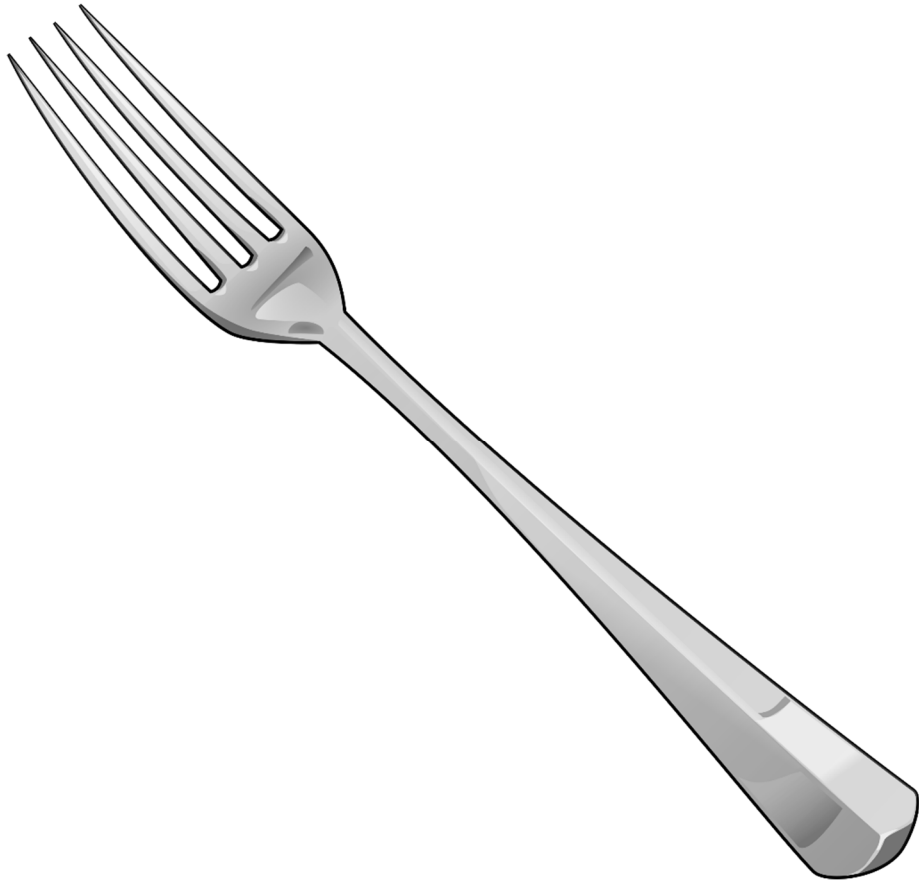


la pelle

ETTE

ette

ette



la fourchette

ESSE

esse

esse



la tresse

ERRE erre erre



la terre

ENNE enne enne



l'indienne

S

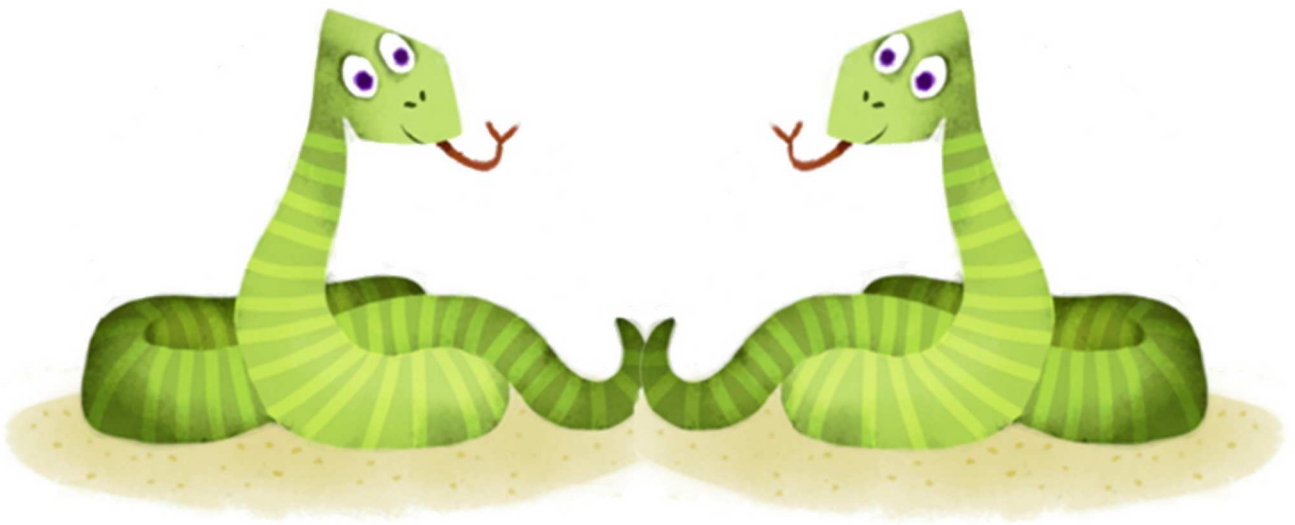


la rose

ss



s



les serpents

paressieux

ILL ill ill



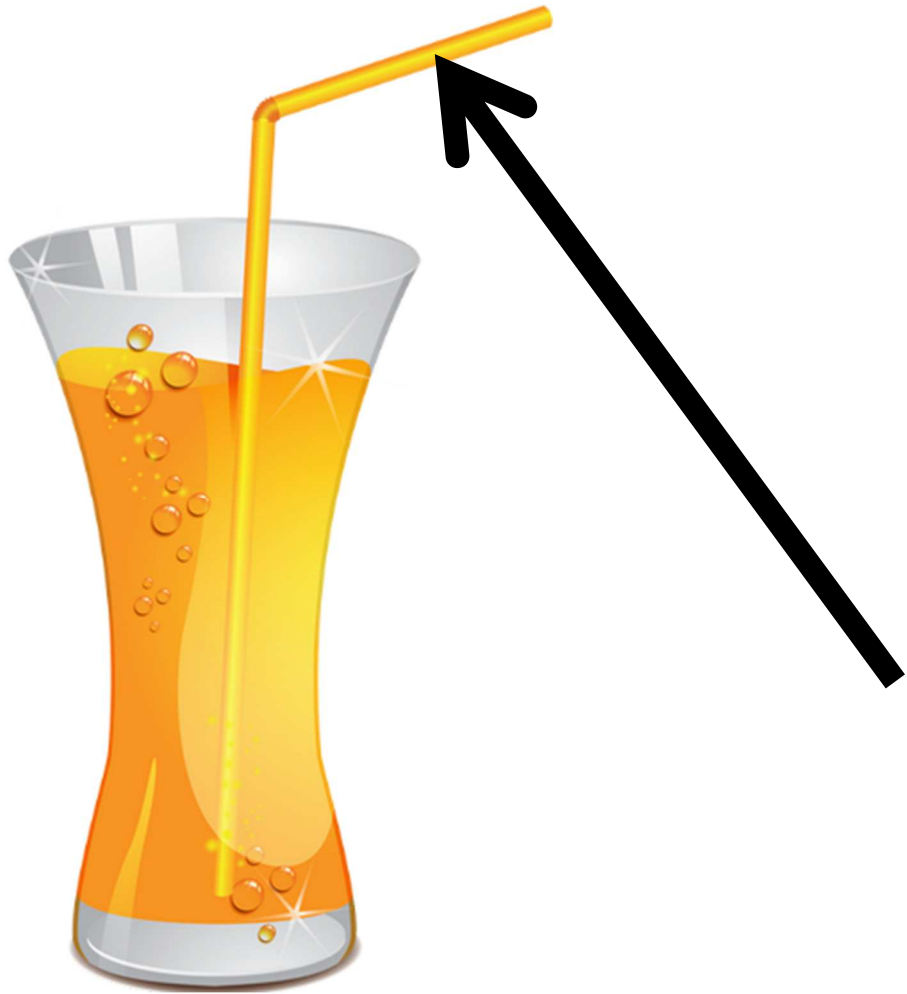
le papillon

AIL ail ail



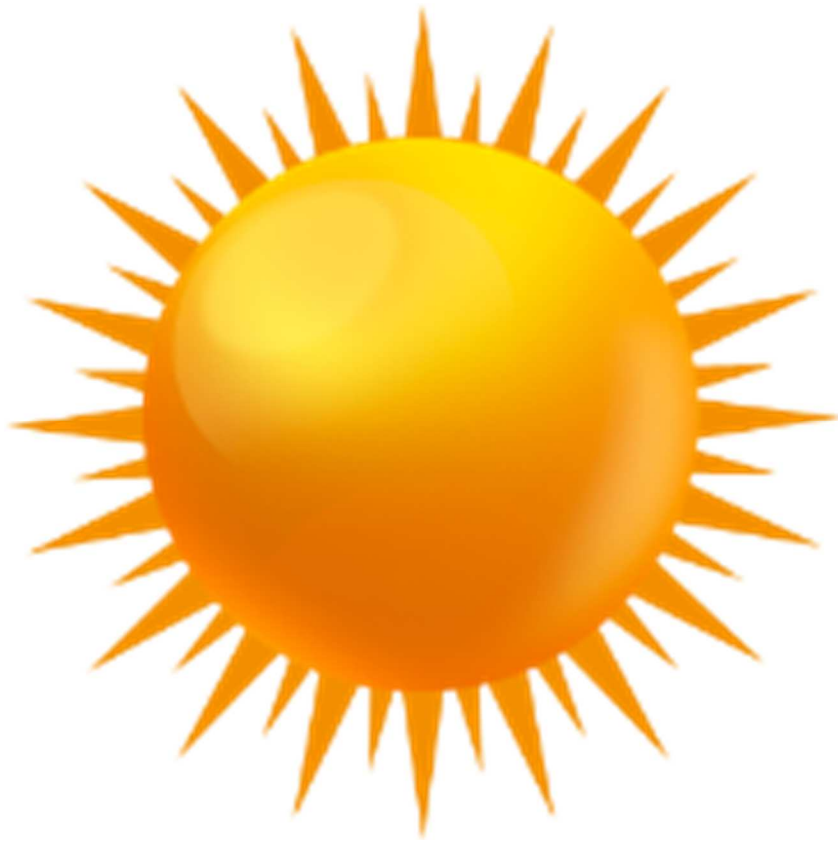
le portail

AILLE aille aille



la paille

EIL eil eil



le soleil

EILLE eille eille



l'abeille

EUIL euil euil



l'écureuil

EUILLE euille euille



la feuille

OUIL ouil ouil



le fenouil

OUILLE ouille ouille

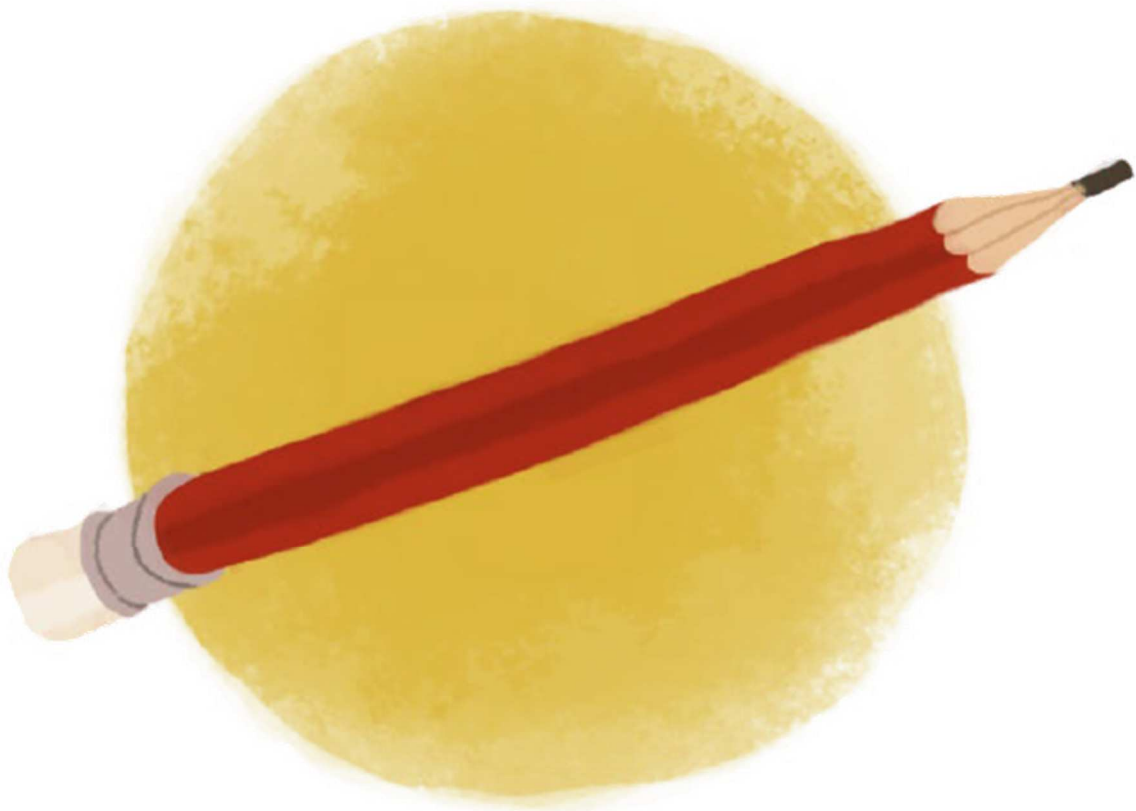


la grenouille

y



ii



le crayon

ti →

si



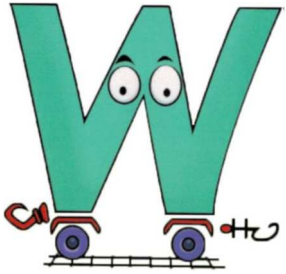
l'invitation

W

w

w

W



le wagon



le kiwi



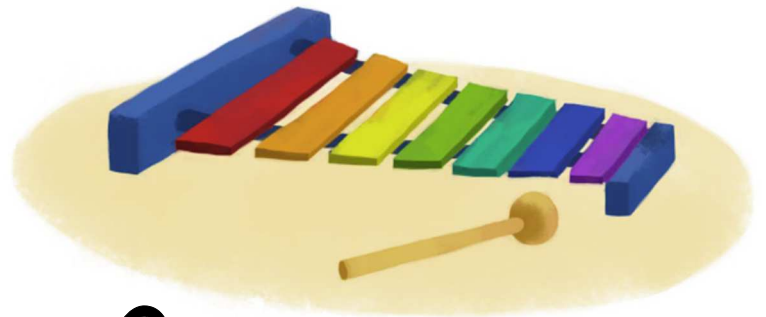
X

x

x

X

le saxophone



le xylophone

un
yn um ym



la jungle