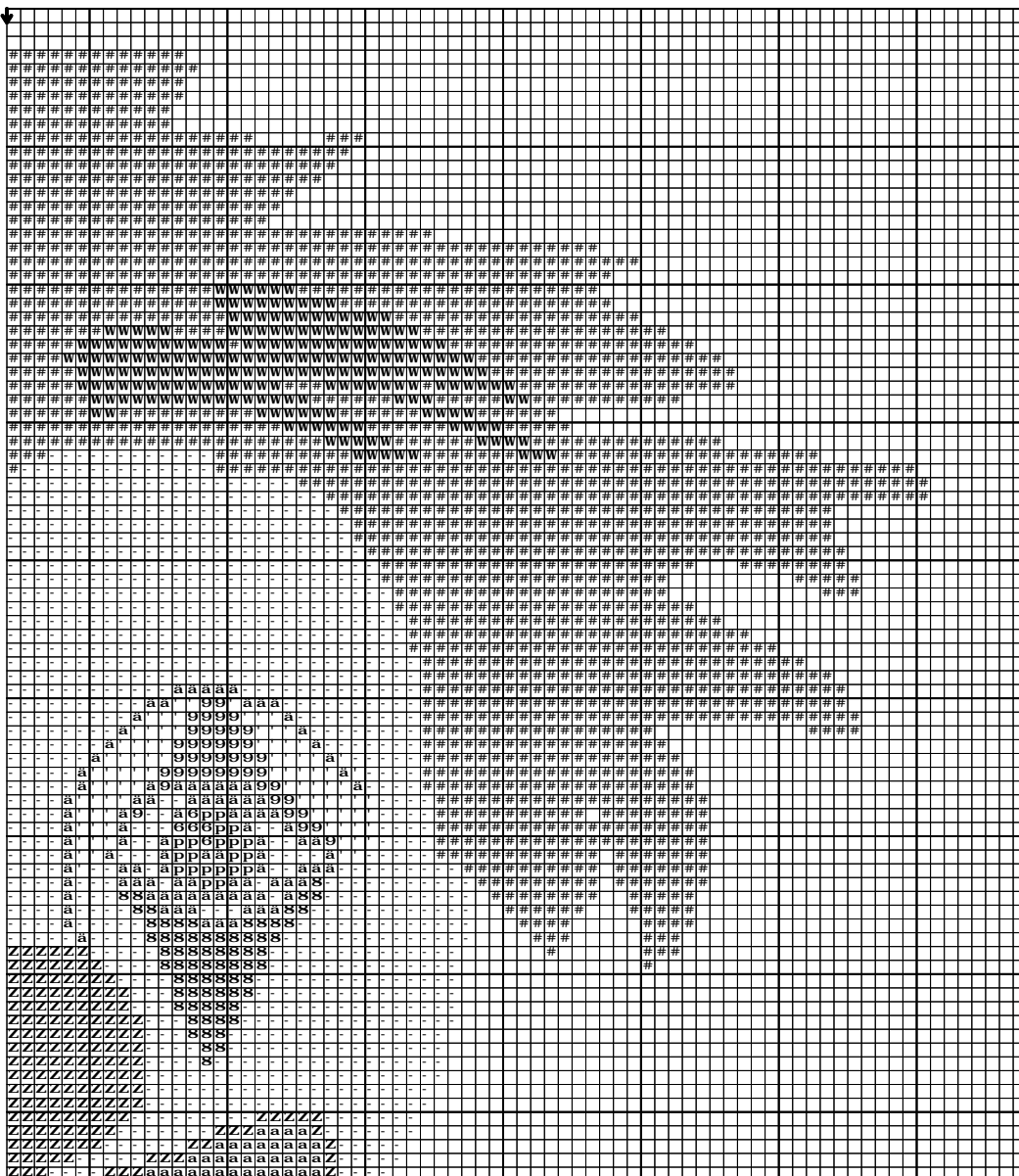
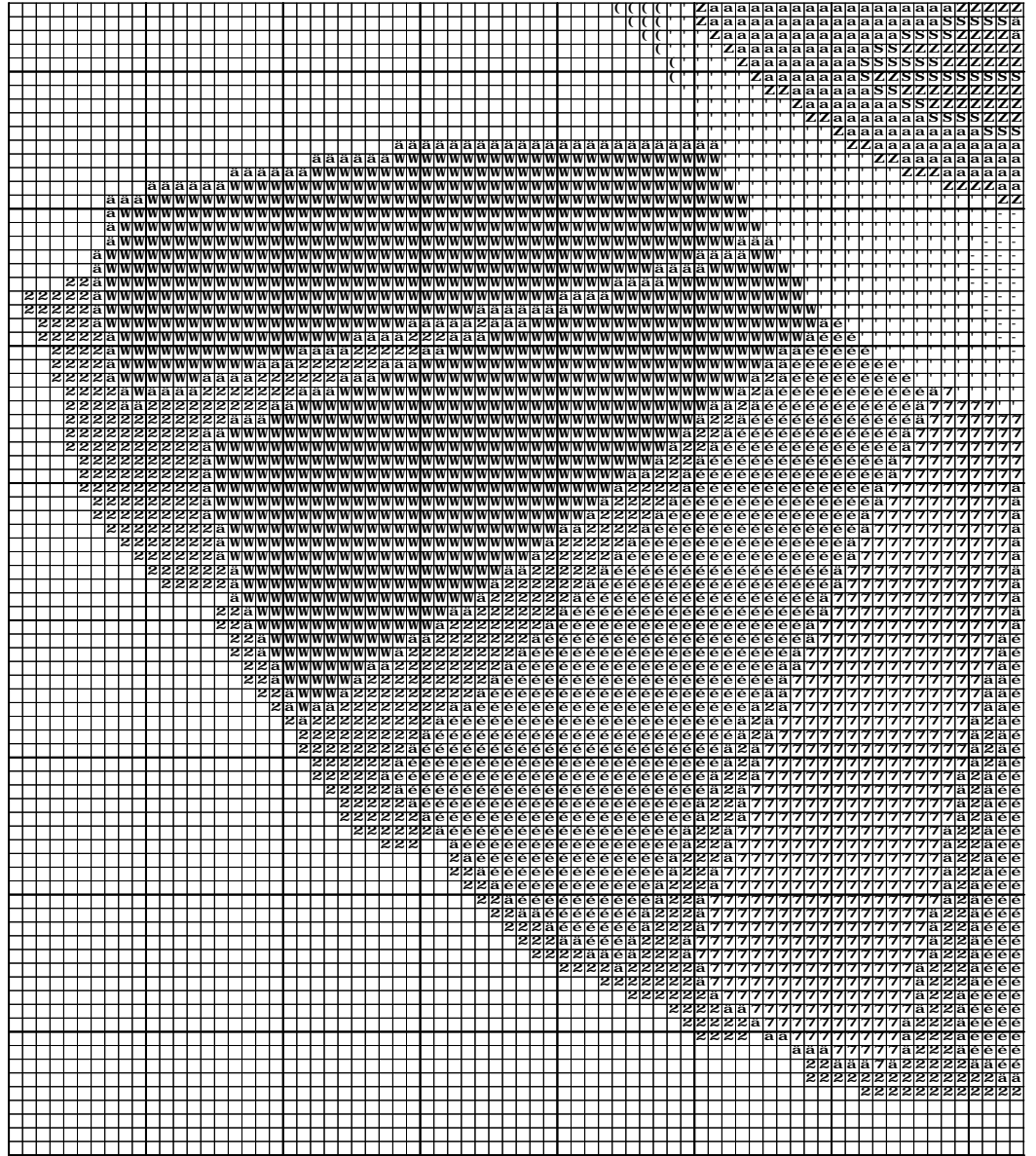
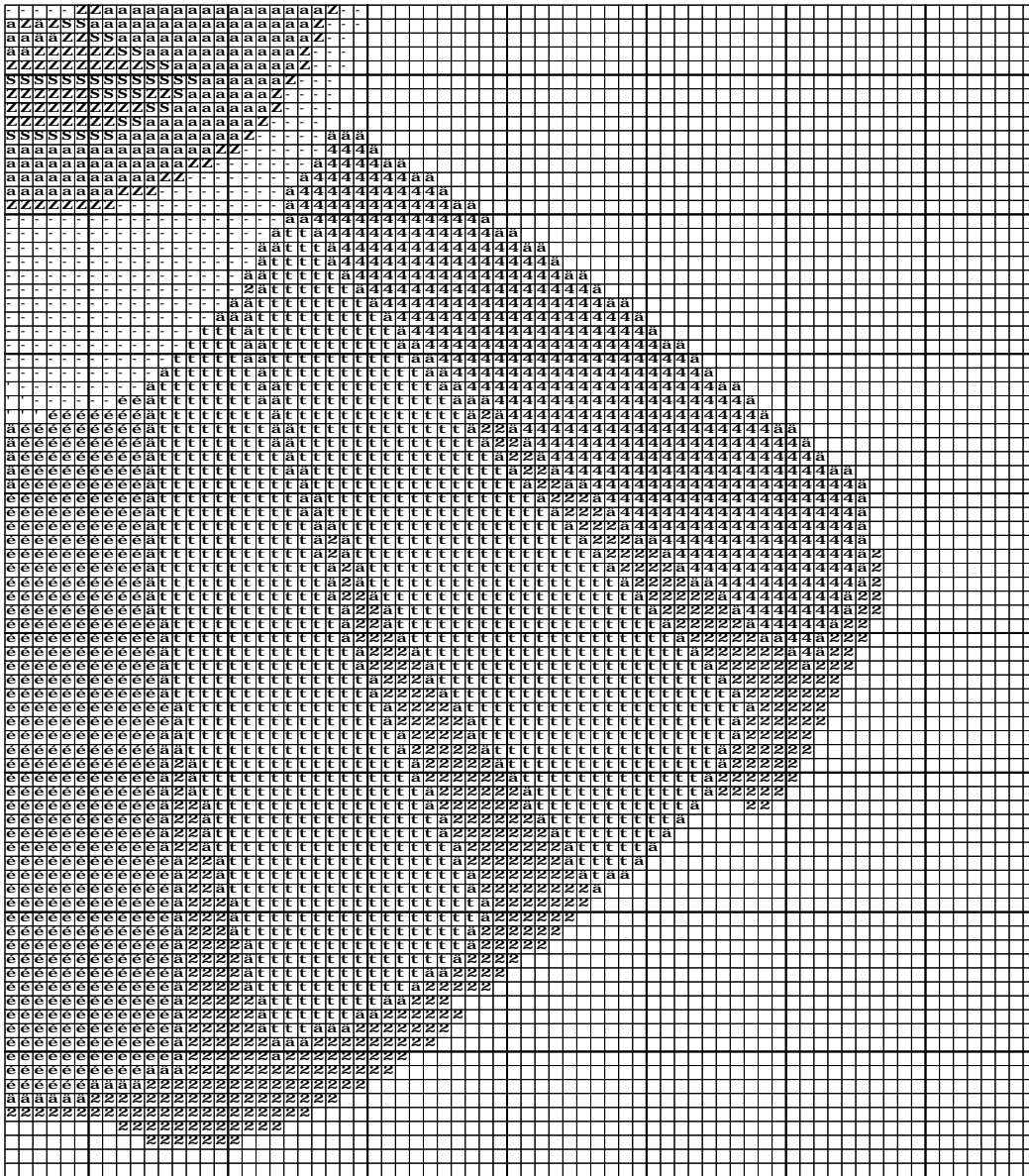


LE CLOWN





LE CLOWN



LE CLOWN

Pattern Name: LE CLOWN

Fabric: Aida 10, White

140w X 164h Counts

Size(s): 10 Count, 35.56w X 41.66h cm

Floss Used for Full Stitches:

| Symbol | Strands | Type | Number | Color |
|----------|---------|------|--------|------------------------|
| 6 | 2 | DMC | 1 | White |
| ä | 2 | DMC | 310 | Black |
| Z | 2 | DMC | 326 | Rose-VY DK |
| 2 | 2 | DMC | 433 | Brown-MD |
| 9 | 2 | DMC | 553 | Violet |
| 4 | 2 | DMC | 791 | Cornflower Blue-VYDK |
| S | 2 | DMC | 814 | Garnet-DK |
| (| 2 | DMC | 818 | Baby Pink |
| p | 2 | DMC | 937 | Avocado Green-MD |
| ' | 2 | DMC | 963 | Dusty Rose-ultra vy lt |
| 8 | 2 | DMC | 995 | Electric Blue-DK |
| a | 2 | DMC | 3354 | Dusty Rose-LT |
| é | 2 | DMC | 3685 | Mauve-DK |
| 7 | 2 | DMC | 3803 | Mauve-MD |
| # | 2 | DMC | 3806 | Cyclamen Pink-LT |
| W | 2 | DMC | 3831 | Raspberry-DK |
| t | 2 | DMC | 3834 | Grape-DK |
| - | 2 | DMC | 3866 | Mocha Brown-UL VY LT |