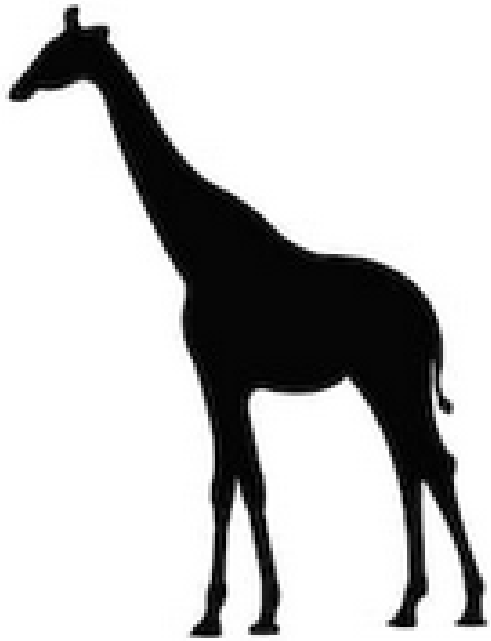
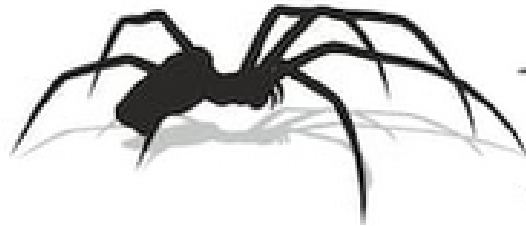


4

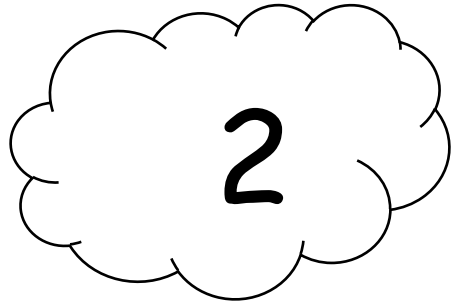


8

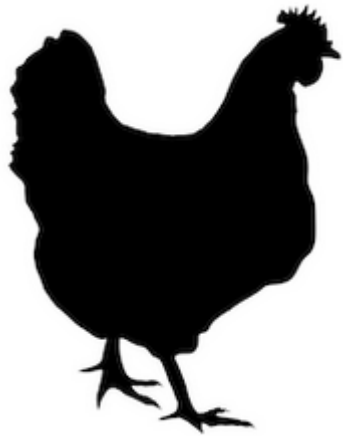


6

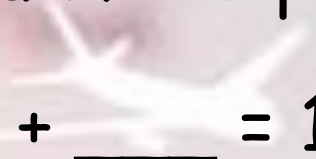




Les animaux sont à imprimer 3 fois chacun.



2 animaux / 10 pattes


$$\underline{\quad} + \underline{\quad} = 10$$

2 animaux / 8 pattes

$$\underline{\quad} + \underline{\quad} = 8$$

2 animaux / 16 pattes

$$\underline{\quad} + \underline{\quad} = 16$$

2 animaux / 12 pattes

$$\underline{\quad} + \underline{\quad} = 12$$

2 animaux / 4 pattes

$$\underline{\quad} + \underline{\quad} = 4$$

2 animaux / 14 pattes

$$\underline{\quad} + \underline{\quad} = 14$$

3 animaux / 12 pattes

$$\underline{\quad} + \underline{\quad} + \underline{\quad} = 12$$

3 animaux / 24 pattes

$$\underline{\quad} + \underline{\quad} + \underline{\quad} = 24$$

3 animaux / 18 pattes

$$\underline{\quad} + \underline{\quad} + \underline{\quad} = 18$$

3 animaux / 6 pattes

$$\underline{\quad} + \underline{\quad} + \underline{\quad} = 6$$

3 animaux / 10 pattes

$$\underline{\quad} + \underline{\quad} + \underline{\quad} = 10$$

3 animaux / 16 pattes

$$\underline{\quad} + \underline{\quad} + \underline{\quad} = 16$$

3 animaux / 14 pattes

$$\underline{\quad} + \underline{\quad} + \underline{\quad} = 14$$

3 animaux / 20 pattes

$$\underline{\quad} + \underline{\quad} + \underline{\quad} = 20$$

3 animaux / 22 pattes

$$\underline{\quad} + \underline{\quad} + \underline{\quad} = 22$$

3 animaux / 8 pattes

$$\underline{\quad} + \underline{\quad} + \underline{\quad} = 8$$

