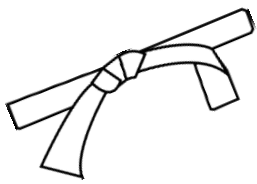


# Mon relevé de progrès en orthographe

Ceinture blanche : Le m devant m, b, p

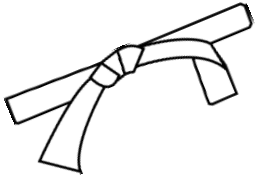


Date  
.....



Signature des parents

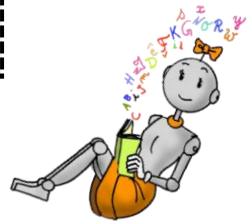
Ceinture jaune : Le son [s] / le son [z]



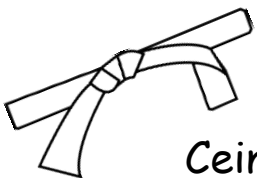
Date  
.....



Signature des parents



Ceinture orange : La valeur du G



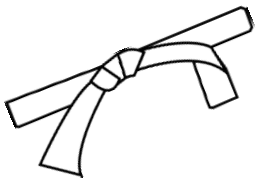
Date  
.....



Signature des parents



Ceinture violette : le son [é] et le son [è], les accents

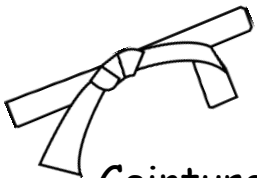


Date  
.....



Signature des parents

Ceinture verte : Les lettres finales muettes

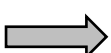
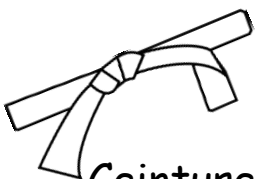


Date  
.....



Signature des parents

Ceinture bleue : Le féminin des noms et des adjectifs (genre)



Date  
.....



Signature des parents

Ceinture marron : le pluriel des noms et des adjectifs (nombre)

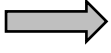


Date  
.....



Signature des parents

Ceinture noire : Les sons ail/le, eil/le, ouil/le, il/le, euil/ueil/le

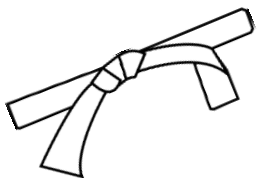


Date  
.....



Signature des parents

Ceinture or :



Date  
.....



Signature des parents

