

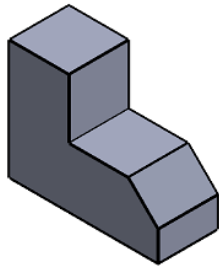
NOM :
Prénom :
Classe :

Exercice
La projection orthogonale

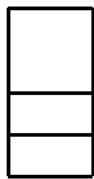


CI 1 : Les techniques et outils de représentation du réel

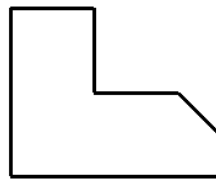
Rappel du cours



Vue de dessous



Vue de droite



Vue de face



Vue de gauche



Vue de dessus

Compétence :
Décrire la position des surfaces et volumes d'une pièce

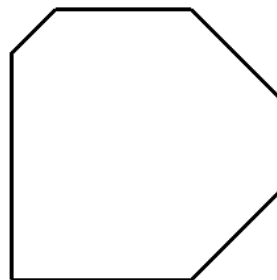
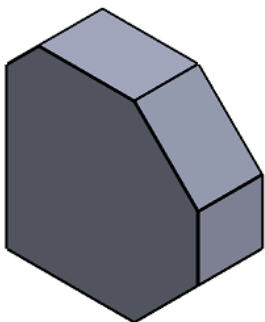
Autonomie			

Consignes :

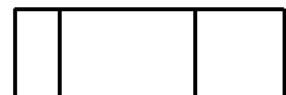
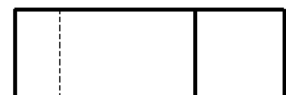
Pour chaque pièces ci dessous,
Repérer par la lettre correspondante les quatre vues manquantes du dessin de définition.

Ouvrir le dossier "projection orthogonale exercice partie 2"

Pièce A



vue de face



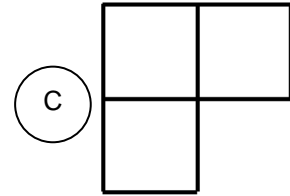
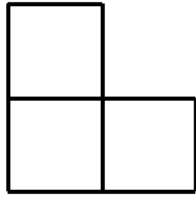
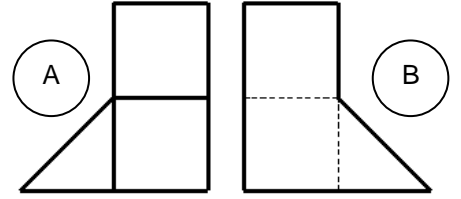
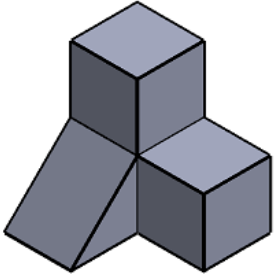
NOM :
Prénom :
Classe :

Exercice
La projection orthogonale

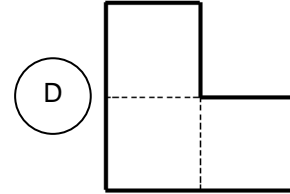


CI 1 : Les techniques et outils de représentation du réel

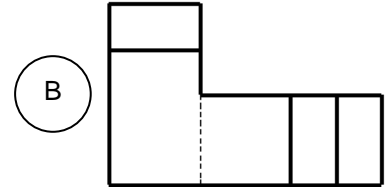
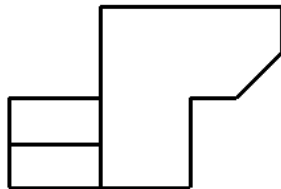
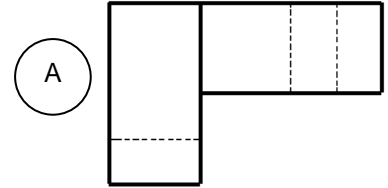
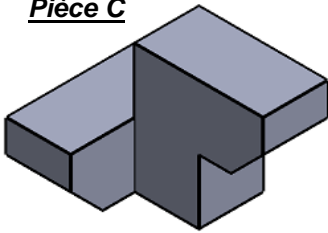
Pièce B



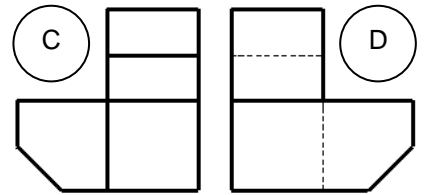
vue de face



Pièce C



vue de face



Pièce D

