

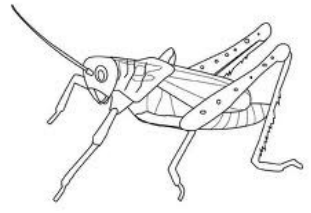
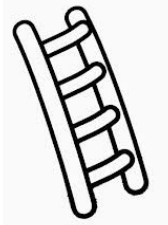
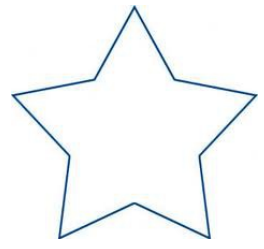
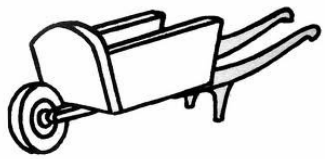
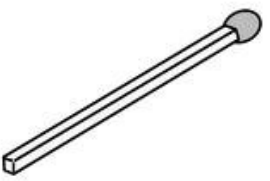
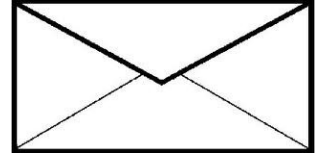
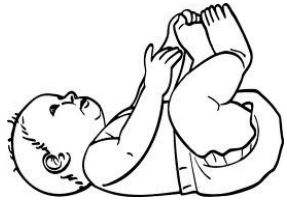
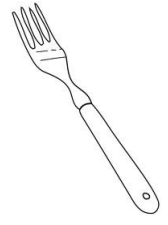
Phonologie

elle, enne, erre, ette... (1)

CP

1

Colorie le dessin quand tu entends le son [ɛ].



2

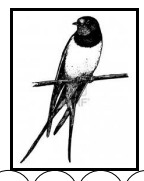
Colorie la ou les syllabes qui contiennent le son [ɛ].



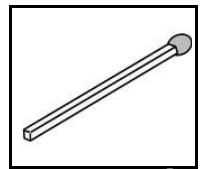
○ ○



○ ○ ○



○ ○ ○ ○



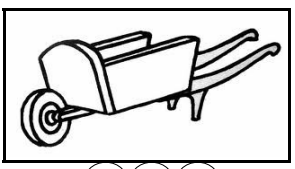
○ ○ ○ ○



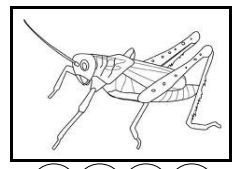
○ ○



○ ○



○ ○ ○



○ ○ ○ ○