

A

a

a

A

a

J

j

I

i



**E**

*E*

**e**

*e*



U

u

U

U

u

Y

y

Y

Y

y

L

l

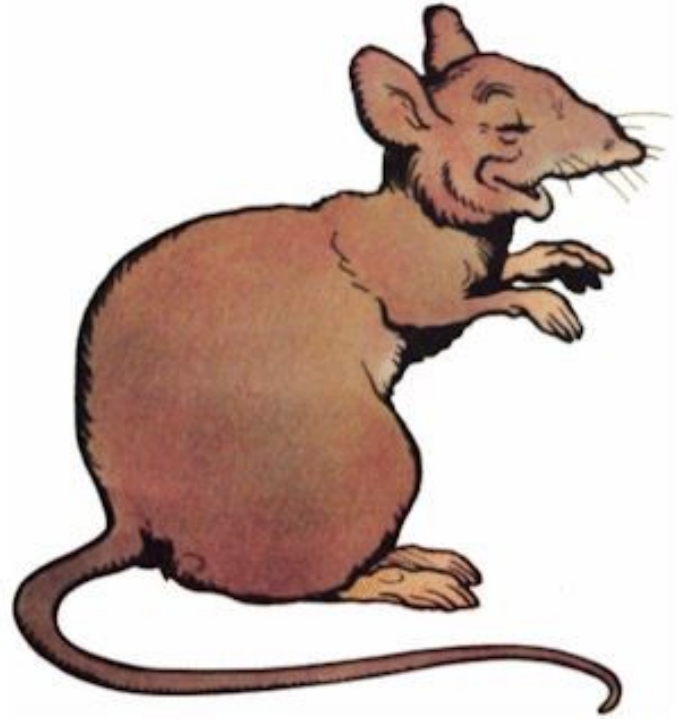
L

l



R

r



R

r

rat

V

v



locomotive

V

v



D

d



D

d

panda

N

n



lune

N

n

T

t



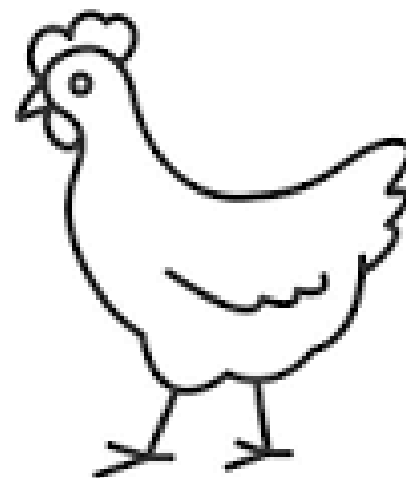
T

t

tomate

P

p



P

p

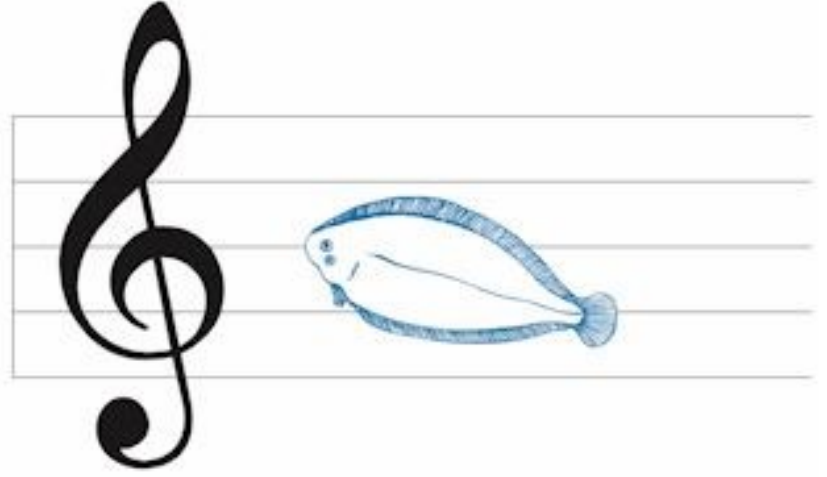
poule

S

S

s

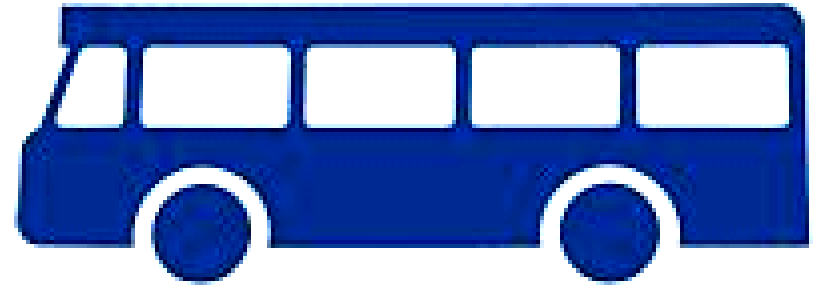
s



s sole

C

c



C

c

car

F

f

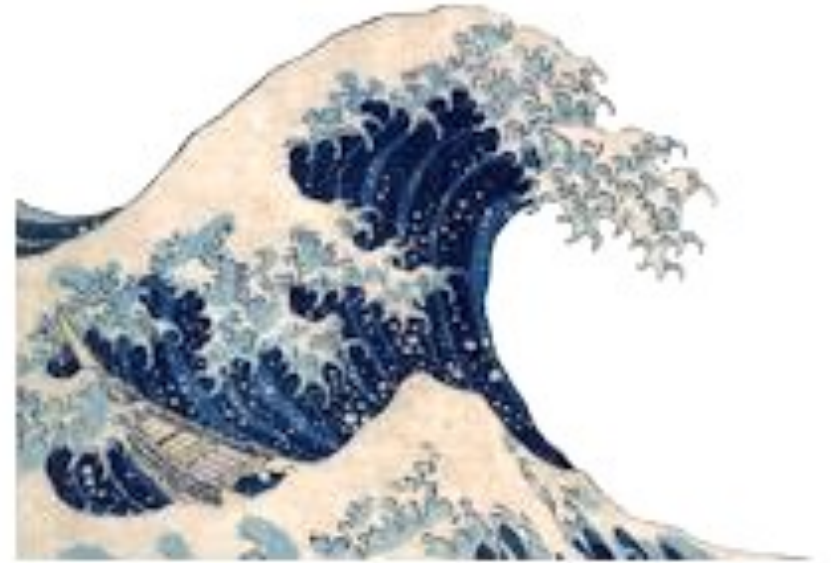


F

f

f ourmis

gu



gue

gui

vague



K

k



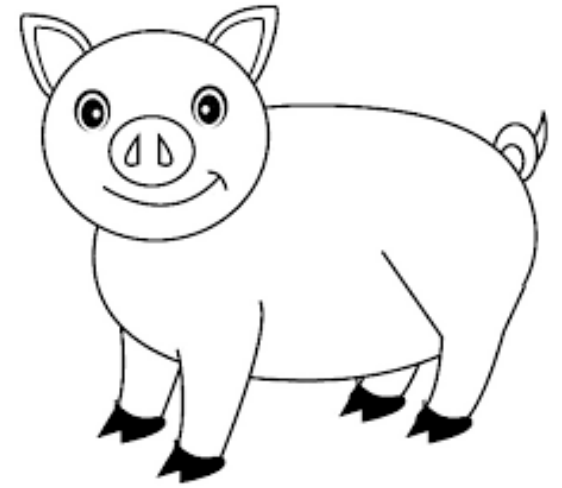
kangourou

K

k

on

in



cochon

on

in



lapin

*eau*



**eau**

taureau

aim



ain

daim  
pain

ien



ien

chien

ch

ch



ruche

ou

ou



ours

ai



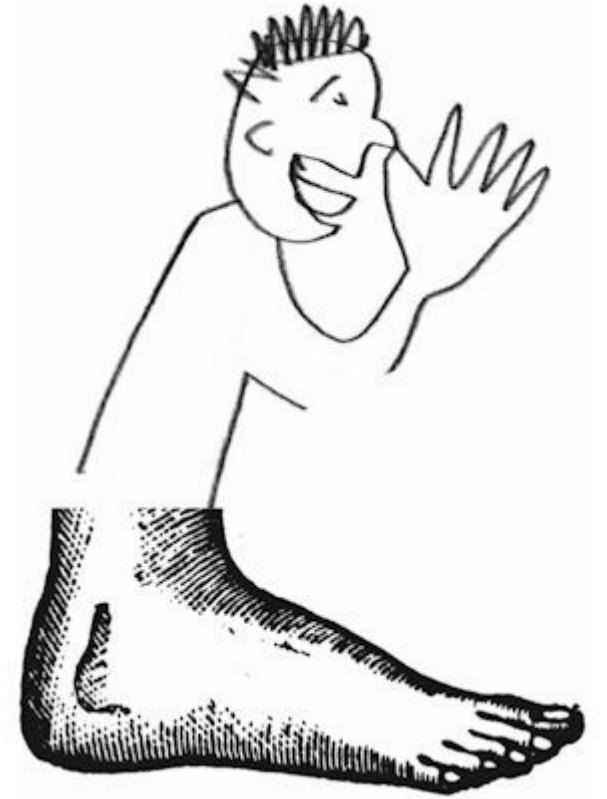
ai

mairie



ez

ied

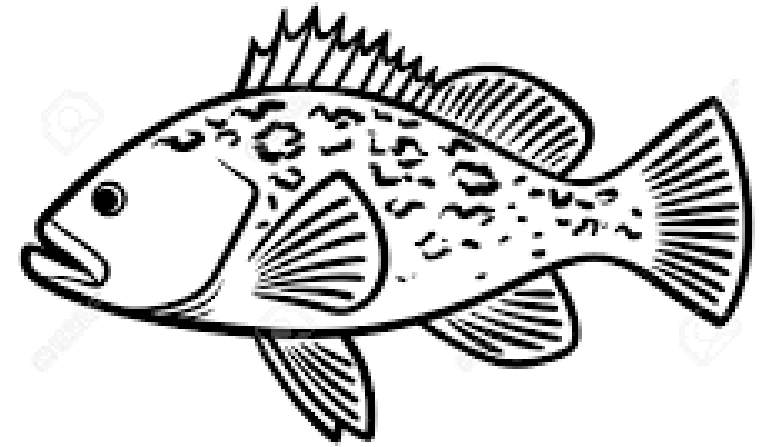


ez iez

pied  
nez

M

m



méroü

M

m

