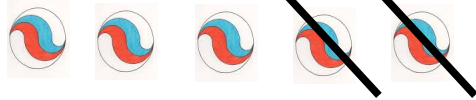
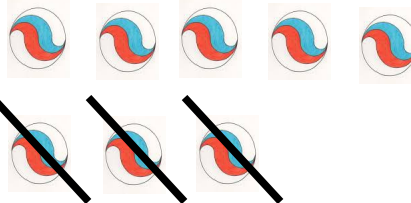


La soustraction



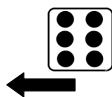
Combien de billes reste-t-il ?

..... =



Combien de billes reste-t-il ?

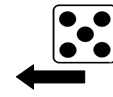
..... =



1	2	3	4	5	6	7	8	9	10
								●	

Sur quelle case arriverai-je ?

..... =



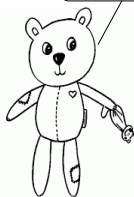
1	2	3	4	5	6	7	8	9	10
						●			

Sur quelle case arriverai-je ?

..... =



7 €

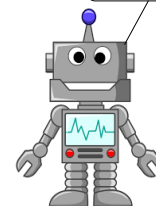


Combien d'euros va-t-il me rester ?

..... =



8 €



Combien d'euros va-t-il me rester ?

..... =