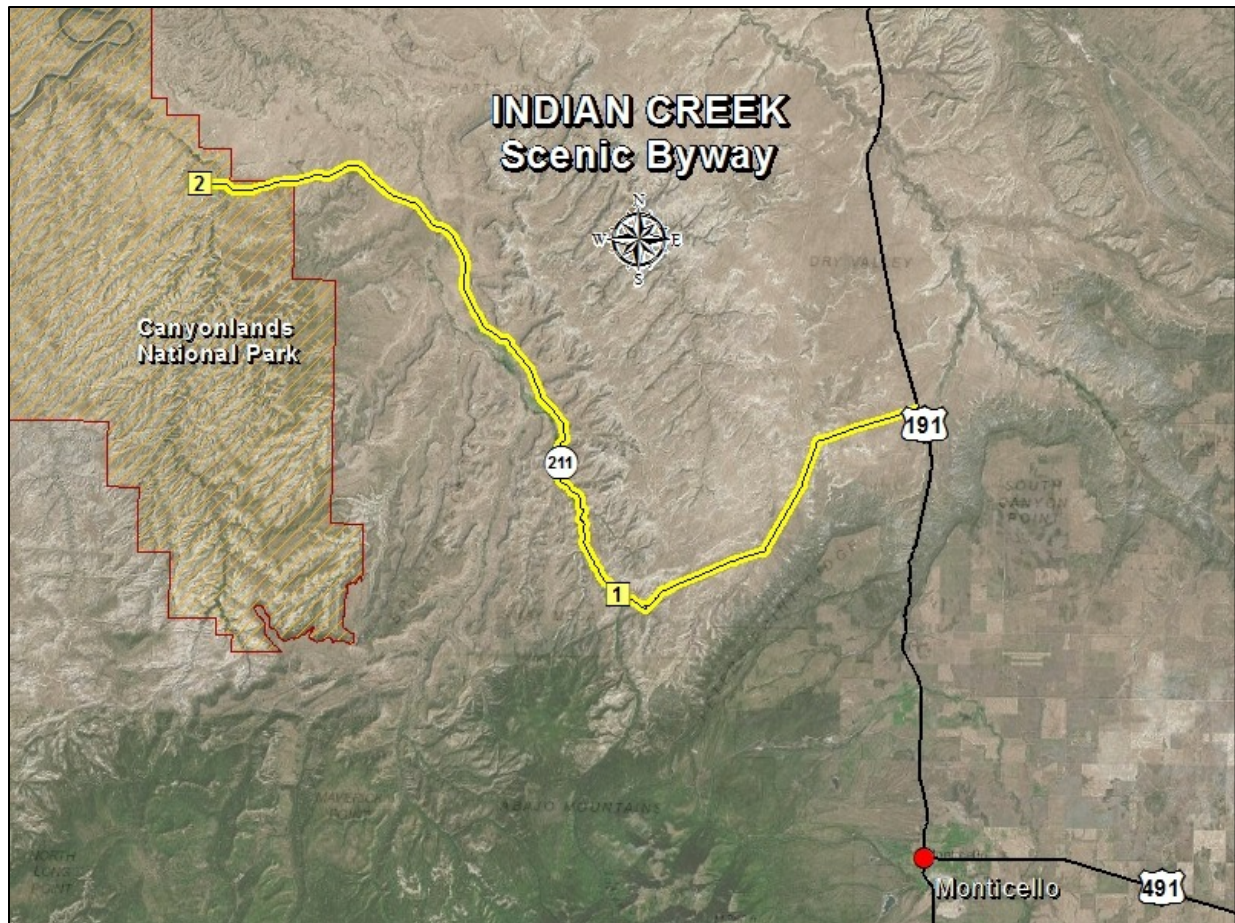


Indian Creek Scenic Byway



The Indian Creek Scenic Byway leads one into the Needles section of Canyonlands National Park. Along the way you will pass by Indian Creek and Newspaper Rock State Historic Monument and Recreation Site.

Monticello

Though not on the scenic byway, Monticello offers a small town community with world class activities. Right at the base of the beautiful Abajo Mountains and at 7,000+ feet you only have to hop on your horse, ATV, or bike to be on National Forest exploring the great outdoors or function as your base camp for your adventures into the Needles District of Canyonlands National Park.

1. Newspaper Rock State Historic Monument

Newspaper Rock State Historic Monument is perhaps the largest, best-known and accessible petroglyph panel in Utah. The 200-square foot Wingate sandstone panel is covered with more than 650 symbols etched into sandstone which records about 2,000 years of human history from the Archaic, Basketmaker, Fremont and Pueblo cultures (BC to AD 1300) into the historic times.



2. Canyonlands National Park

Canyonlands National Park invites you to explore a wilderness of countless canyons and fantastically formed buttes carved by the Colorado River and its tributaries. The Indian Creek Scenic Byway leads you into the Needles District of the park.



For more Information

www.aztecnm.com

