

E

E

e

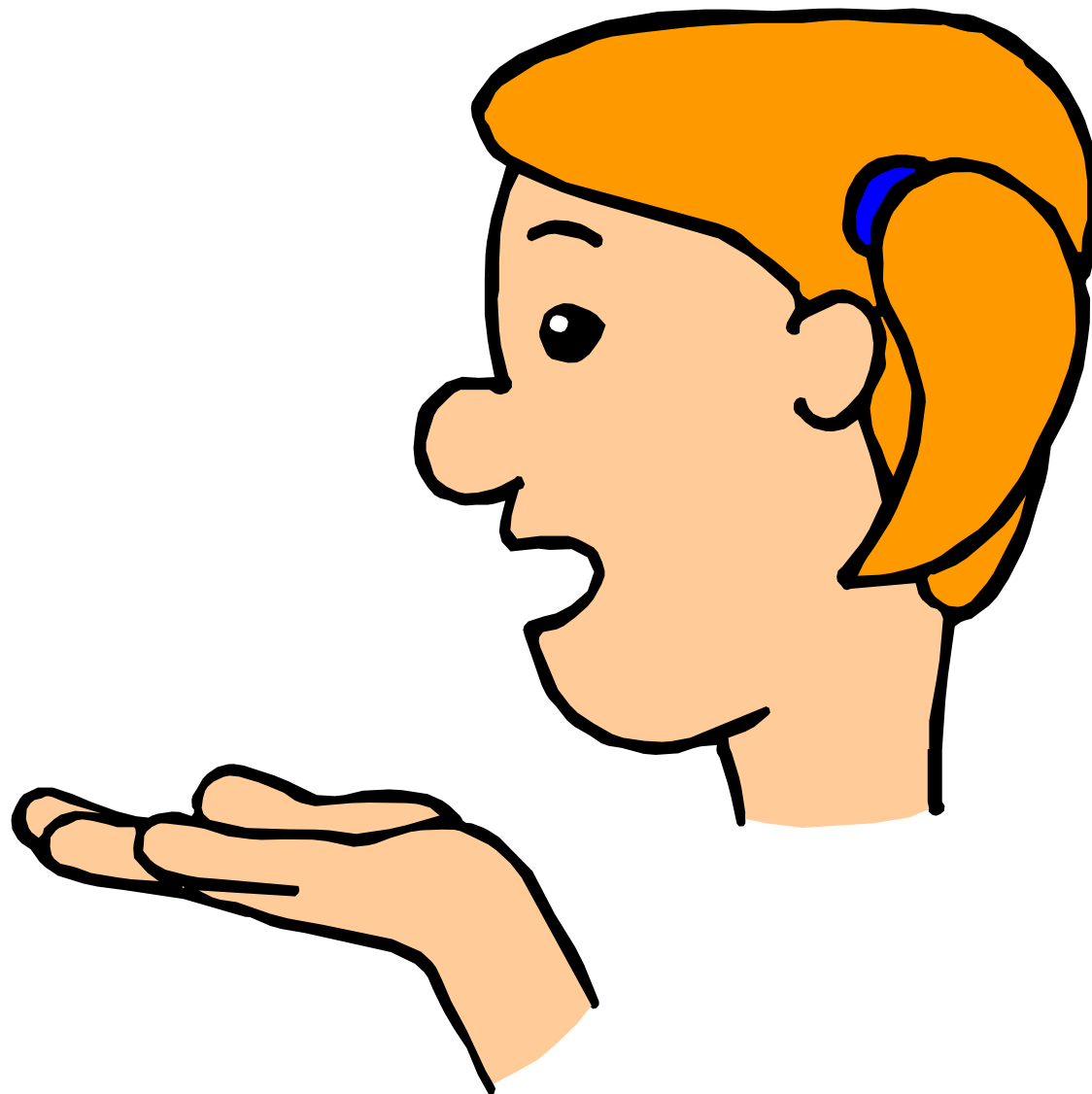
e



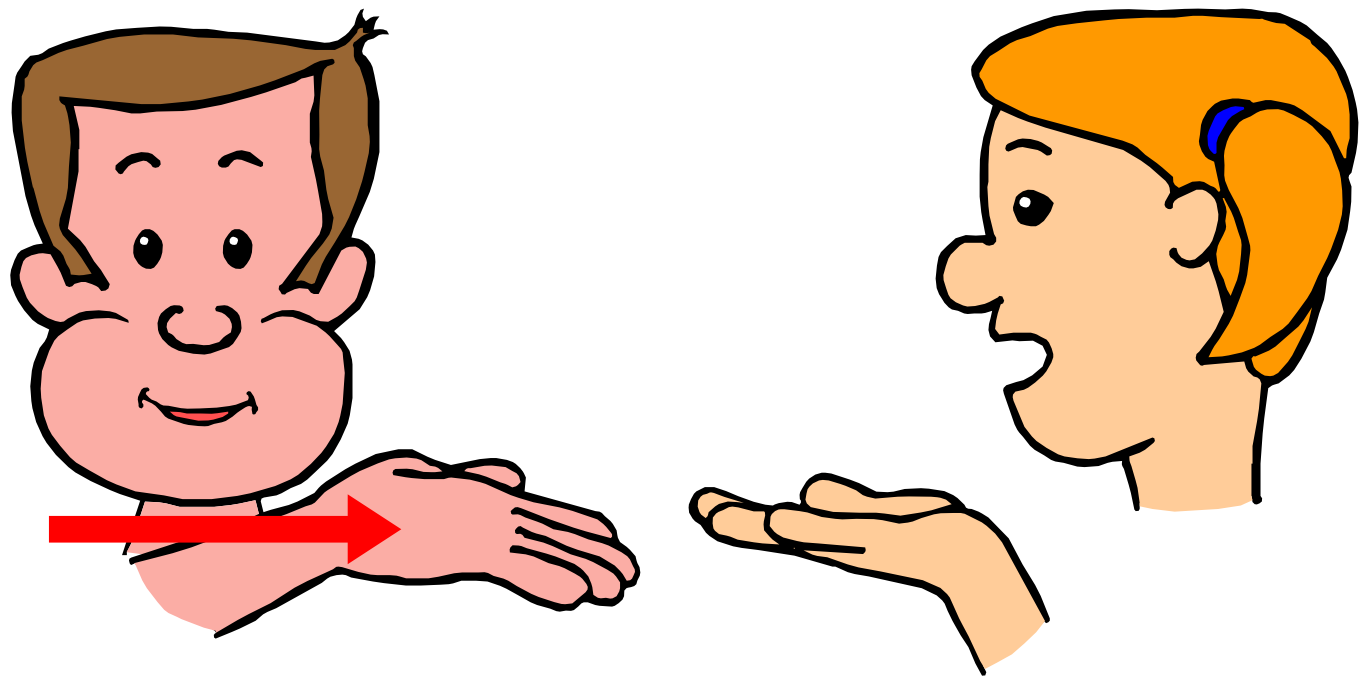
Quand **Madame é** hésite ou qu'elle n'est pas sûre, elle dit eeeeh.

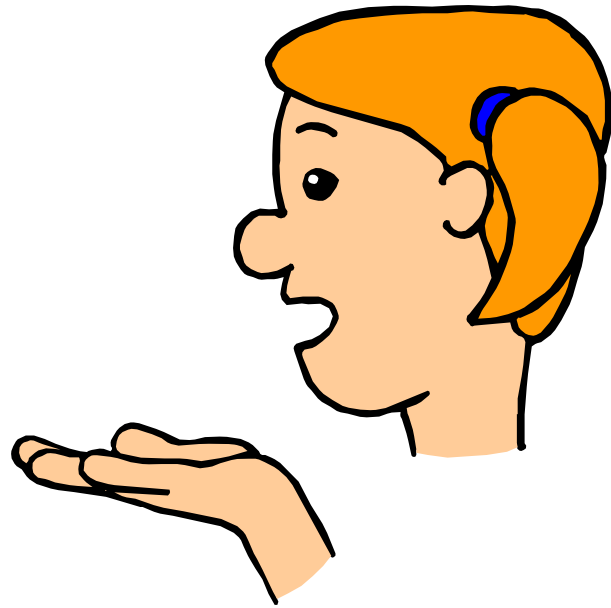
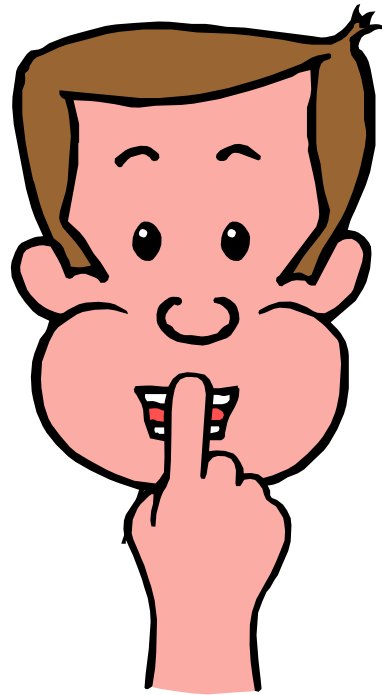
Elle devient alors bleue et son anneau d'or disparaît.

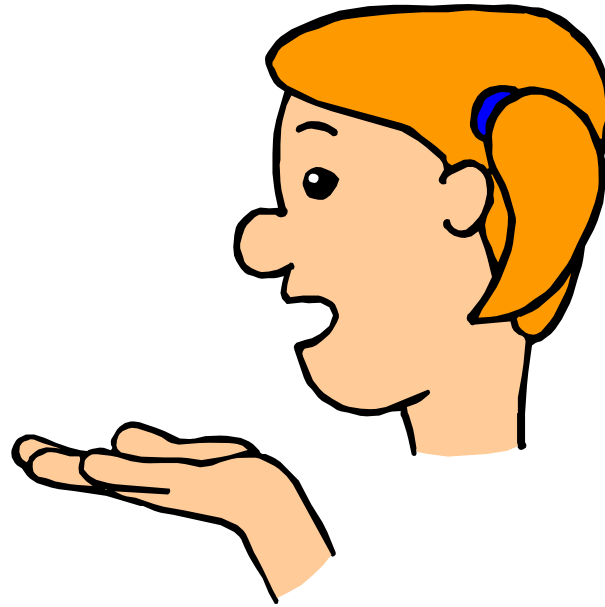
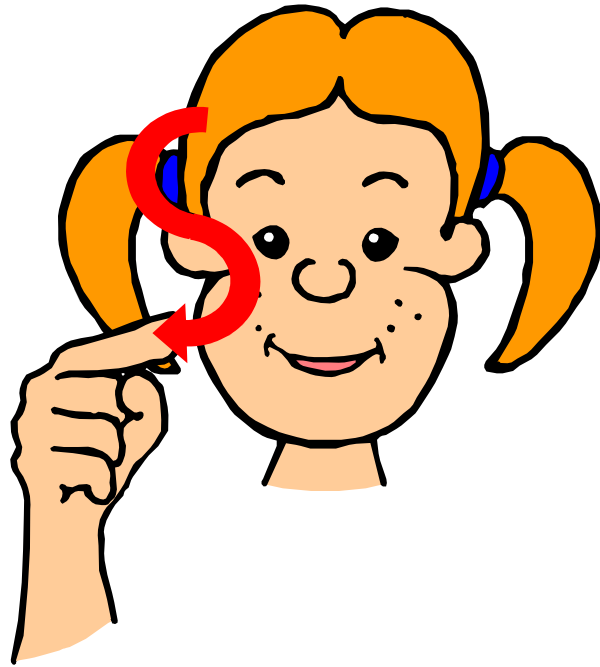
Si **Madame é** ne sait pas, ce qui lui arrive assez souvent elle devient grise et reste muette.

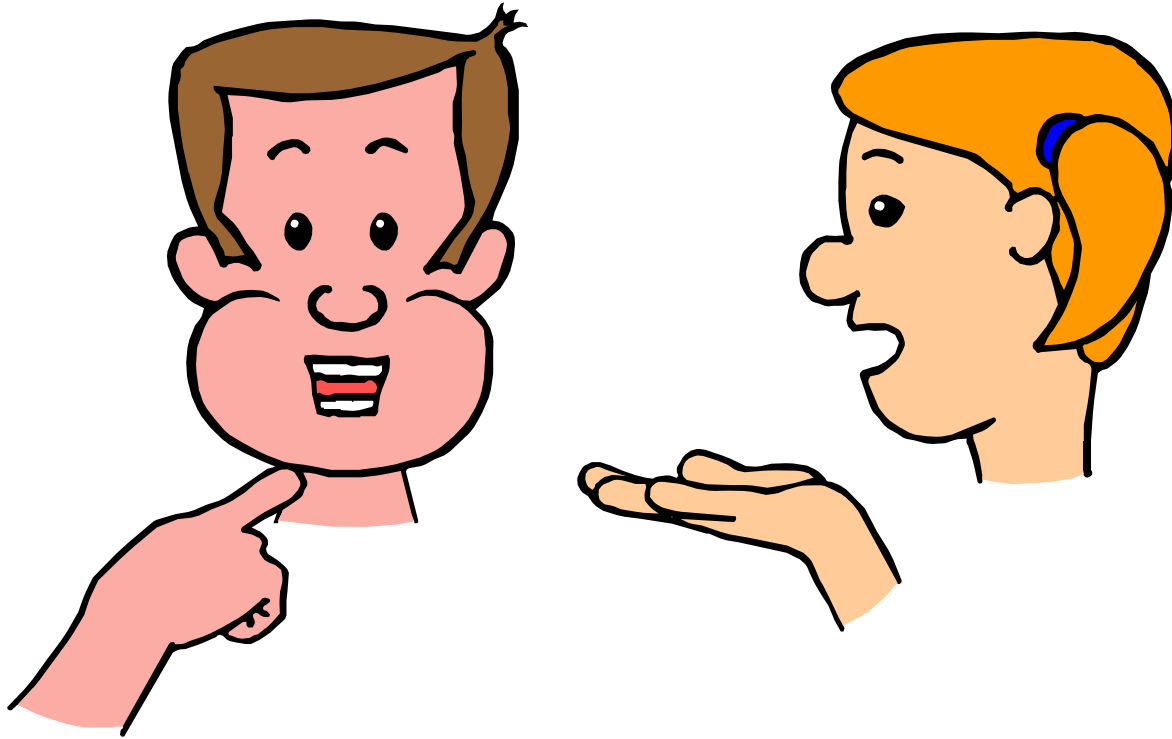


Comme Marie, tends ta main,  
la paume tournée vers le haut...

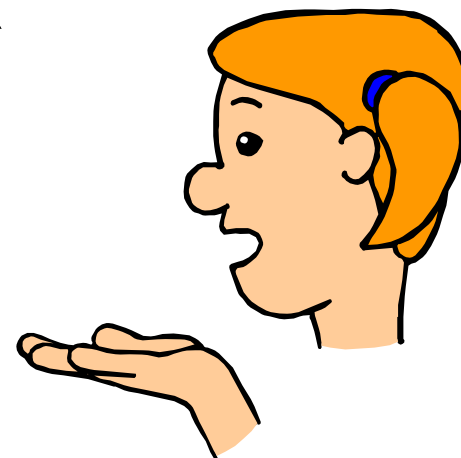
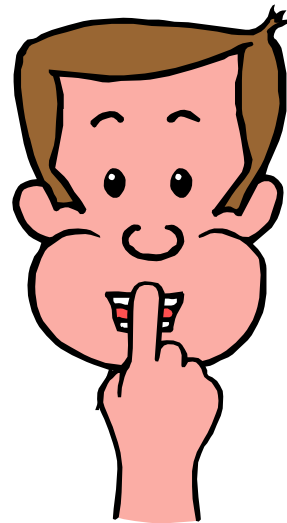
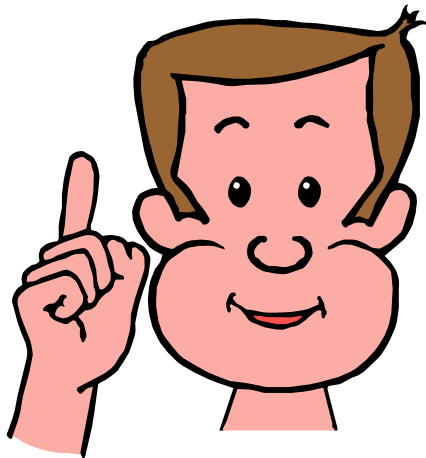
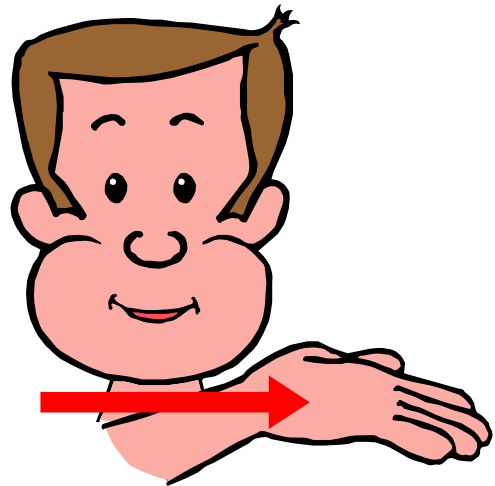








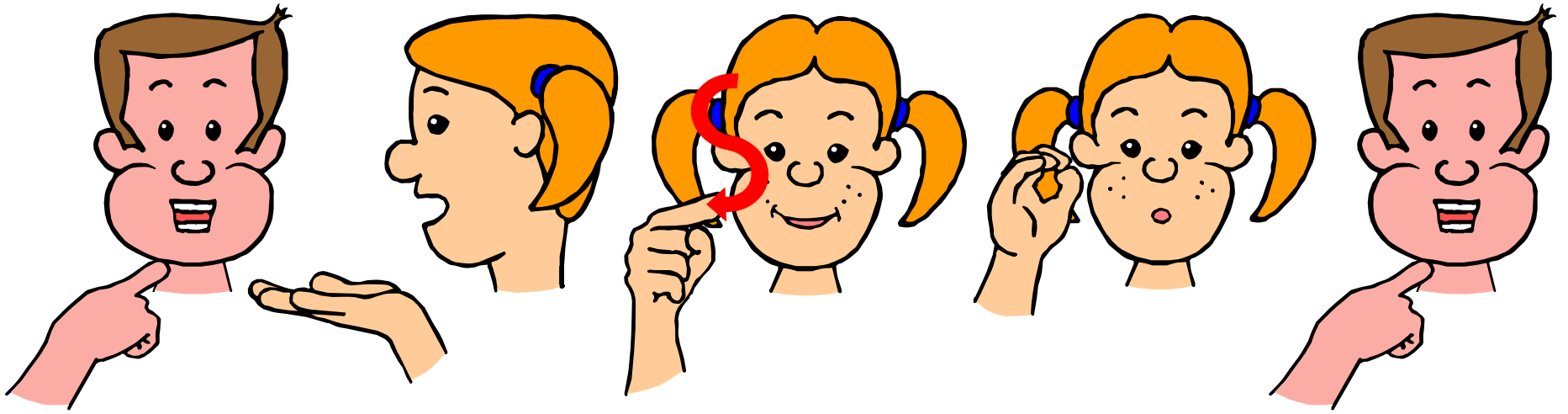


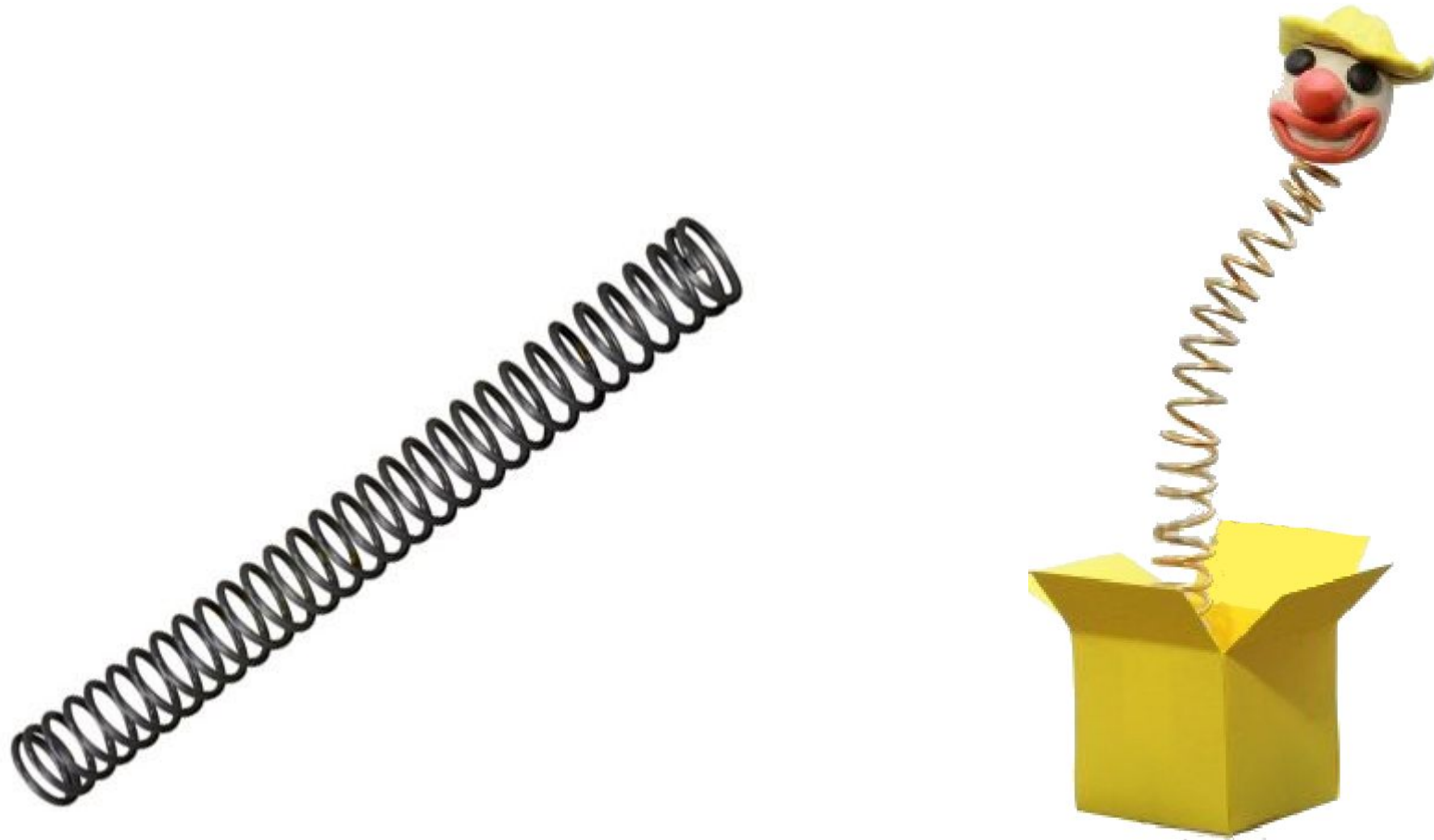




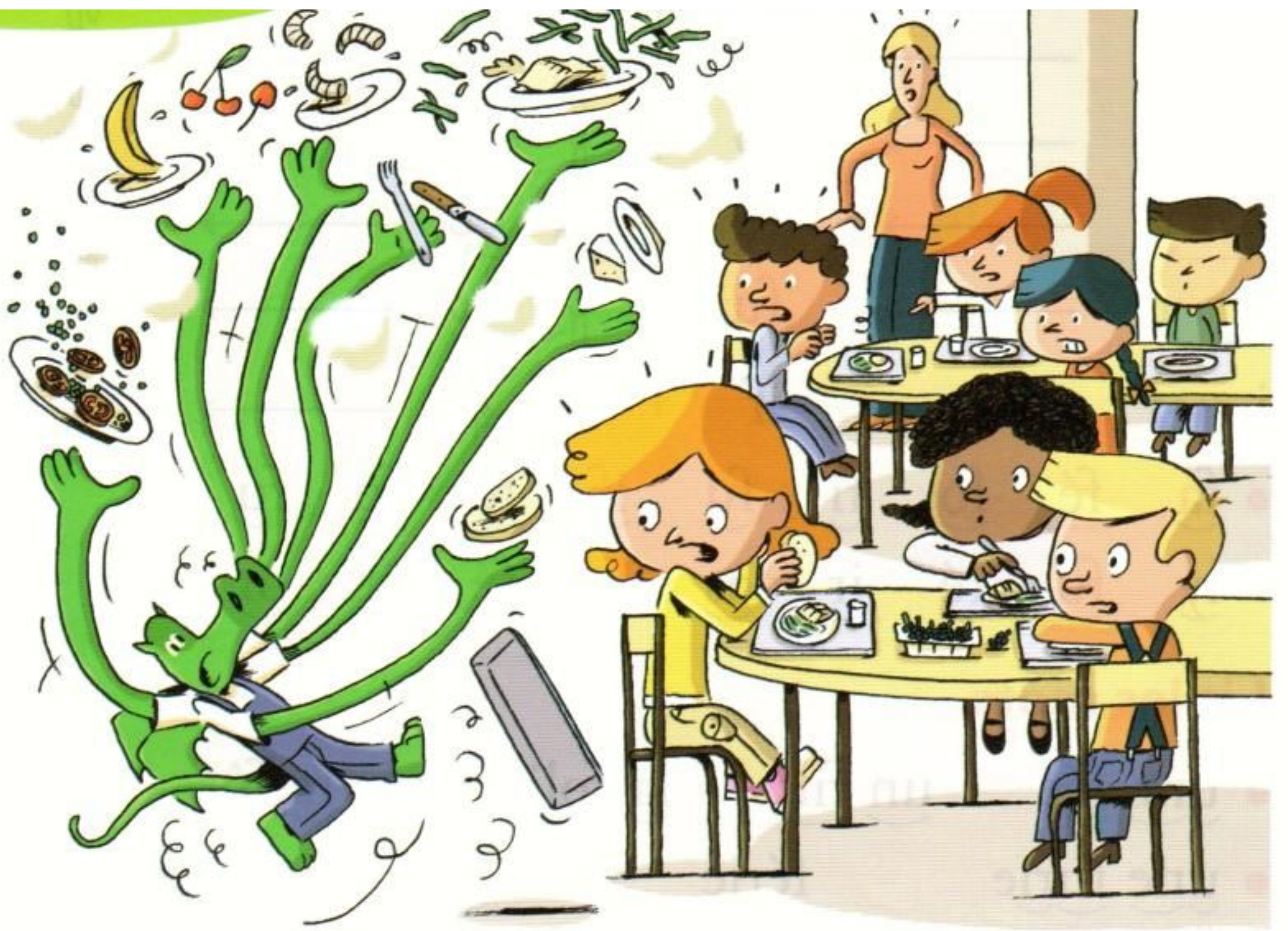


une file





un ressort

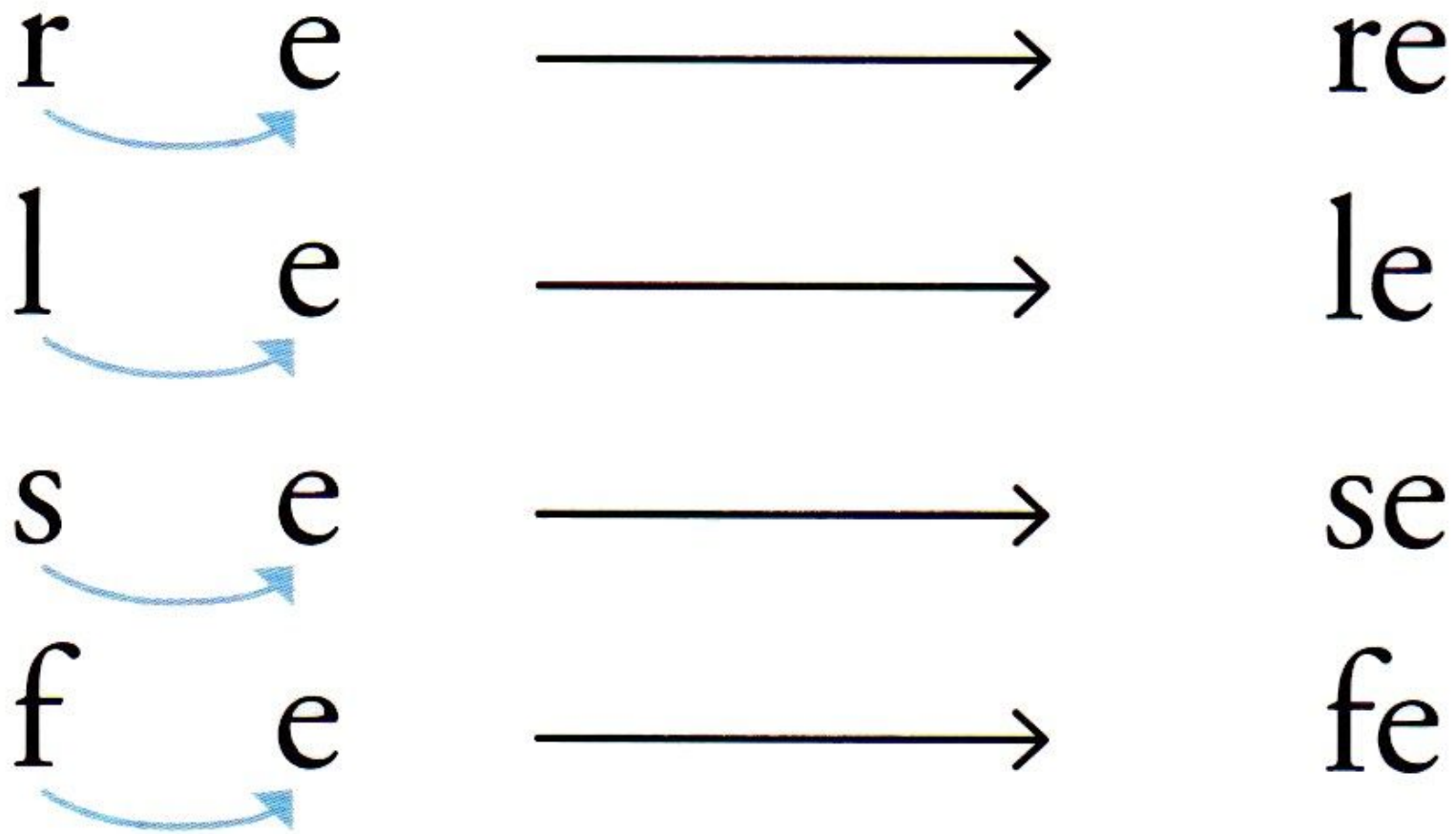


e f e r S u o

r é e s i E

e i F f r s L y é

E u a r



r e  
l e



re

l e



le

s e  
f e



se



fe



le se re fe

le se re le

se re fe

le sa if ré

or fa se as

fe le ir

une refuss

sale

une file

relié

un Russe

un ressort

le rire

le sol

il s'affole

il relira

il fera

il sera