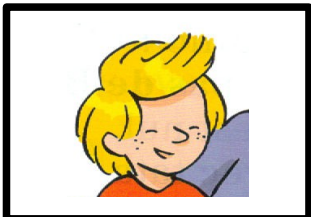
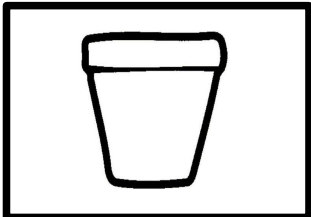
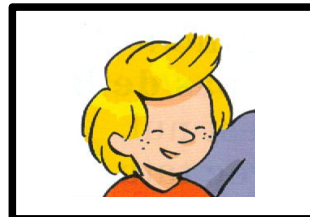
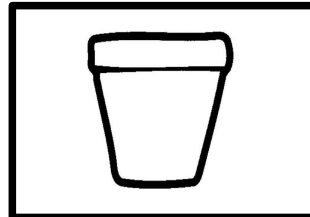


Recompose les mots grâce aux syllabes.



mardi

Recompose les mots grâce aux syllabes.



mardi

or

Mi

mie

or

Mi

mie

mo

lo

mo

lo

pot

mot

pot

mot

or

Mi

mie

or

Mi

mie

mo

lo

mo

lo

pot

mot

pot

mot