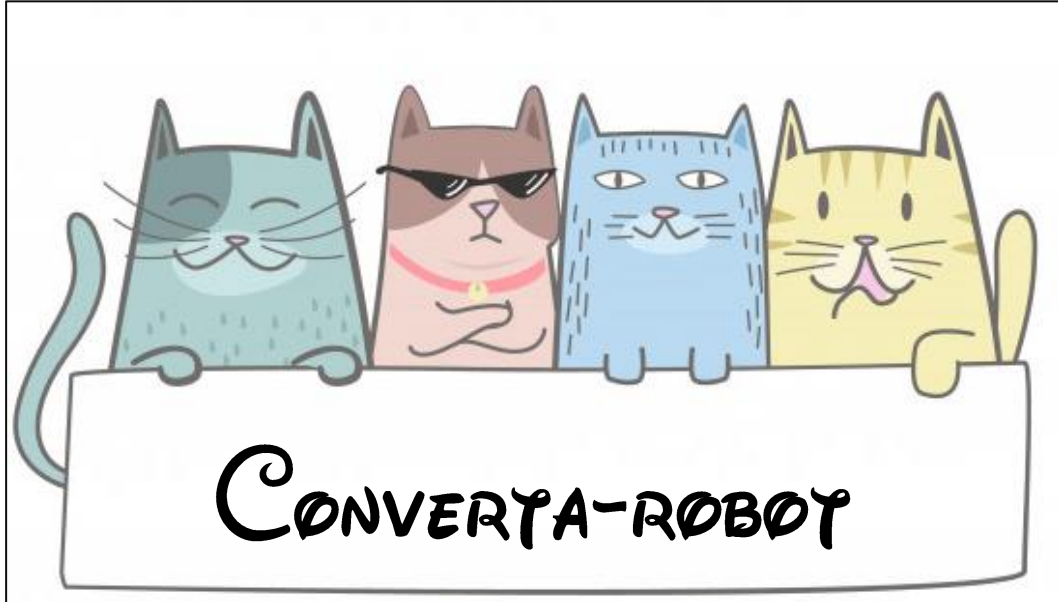


CONVERTA-ROBOT

Etiquette pour la pochette de jeu



INSTRUCTIONS

Objectifs :

- ★ Convertir des masses

Règle du jeu :

Le but du jeu est de compléter sa carte Robot

Chaque joueur pioche, à tour de rôle, une carte. Il doit la convertir selon les indications. Il vérifie si la réponse est correcte. Si oui, il complète sa carte robot avec le point obtenu. Le premier à avoir complété son robot a gagné.

Pour l'impression du jeu et la préparation du jeu :

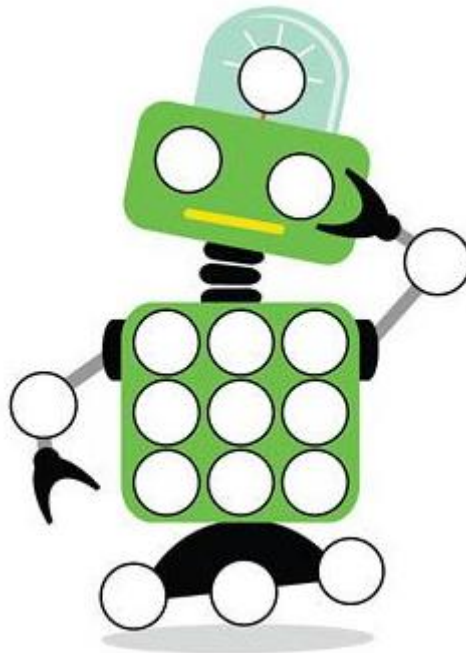
Imprimer cartes en recto/verso. Imprimer les cartes robots (avec tableau de conversion) normalement.

A quel moment faire ce jeu ?

CE2

CONVERSION DES MASSES

t	q		kg	hg	dag	g	cg	dg	mg
Tonne	Quintal		kilogrammes	hectogramme	décagramme	gramme	centigramme	décigramme	milligramme



1 kg 725 g =
_____ g

1026 g =
____ kg ____ g

2 t 875 kg =
_____ kg

3658 kg =
____ t ____ kg

3 kg 643 g =
_____ g

7535 g =
____ kg ____ g

8 t 341 kg =
_____ kg

6345 kg =
____ t ____ kg

3 kg 423 g =
_____ g

5325 g =
____ kg ____ g

5 t 123 kg =
_____ kg

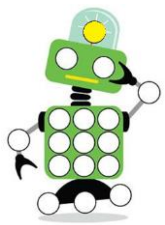
4213 kg =
____ t ____ kg

7 kg 123 g =
_____ g

4351 g =
____ kg ____ g

5 t 321 kg =
_____ kg

3215 kg =
____ t ____ kg



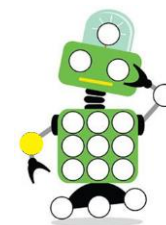
3643 g



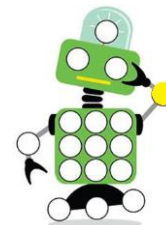
3 t 658 kg



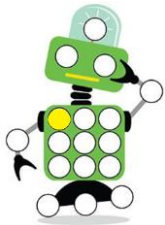
2875 kg



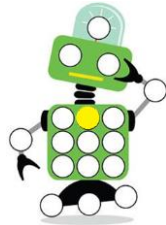
1 kg 026 g



1725 g



5 kg 325 g



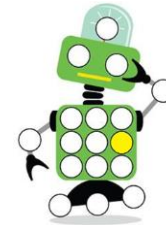
3423 g



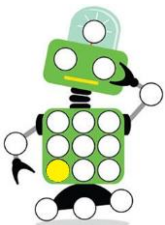
6 t 345 kg



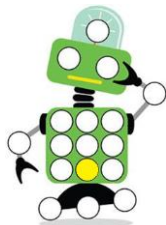
8341 kg



7 kg 535 g



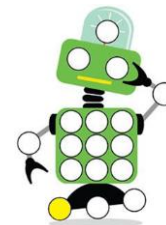
5321 kg



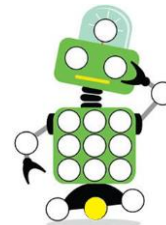
4 kg 351 g



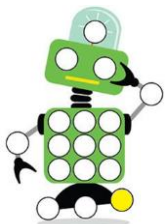
7123 g



4 t 213 kg



5123 kg



3 t 215 kg

5 kg 653 g =
_____ g

4154 g =
_____ kg _____ g

1 t 543 kg =
_____ kg

8754 kg =
_____ t _____ kg

2 kg 543 g =
_____ g

6432 g =
_____ kg _____ g

1 t 654 kg =
_____ kg

7543 kg =
_____ t _____ kg

5 kg 231 g =
_____ g

4252 g =
_____ kg _____ g

1 t 754 kg =
_____ kg

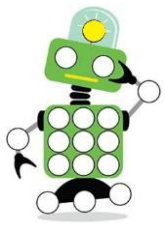
7253 kg =
_____ t _____ kg

3 kg 153 g =
_____ g

5221 g =
_____ kg _____ g

2 t 643 kg =
_____ kg

8461 kg =
_____ t _____ kg



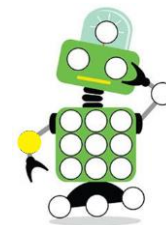
2543 g



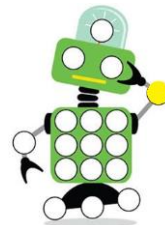
8 t 754 kg



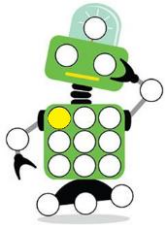
1543 kg



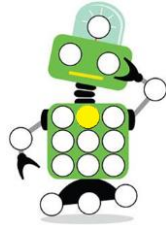
4 kg 154 g



5653 g



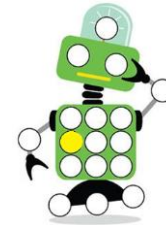
4 kg 252 g



5231 g



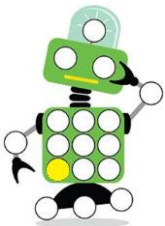
7 t 543 kg



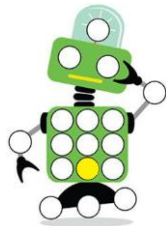
1654 kg



6 kg 432 g



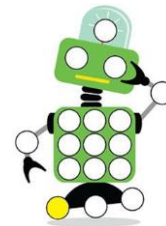
2643 kg



5 kg 221 g



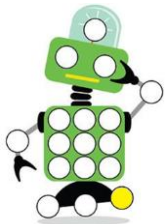
3153 kg



7 t 253 kg



1754 kg



8 t 461 kg

$$6 \text{ kg } 532 \text{ g} = \underline{\hspace{2cm}} \text{ g}$$

$$6312 \text{ g} = \underline{\hspace{1cm}} \text{ kg } \underline{\hspace{1cm}} \text{ g}$$

$$1 \text{ t } 532 \text{ kg} = \underline{\hspace{2cm}} \text{ kg}$$

$$5241 \text{ kg} = \underline{\hspace{1cm}} \text{ t } \underline{\hspace{1cm}} \text{ kg}$$

$$2 \text{ kg } 532 \text{ g} = \underline{\hspace{2cm}} \text{ g}$$

$$5331 \text{ g} = \underline{\hspace{1cm}} \text{ kg } \underline{\hspace{1cm}} \text{ g}$$

$$2 \text{ t } 153 \text{ kg} = \underline{\hspace{2cm}} \text{ kg}$$

$$6323 \text{ kg} = \underline{\hspace{1cm}} \text{ t } \underline{\hspace{1cm}} \text{ kg}$$

$$3 \text{ kg } 534 \text{ g} = \underline{\hspace{2cm}} \text{ g}$$

$$2464 \text{ g} = \underline{\hspace{1cm}} \text{ kg } \underline{\hspace{1cm}} \text{ g}$$

$$1 \text{ t } 545 \text{ kg} = \underline{\hspace{2cm}} \text{ kg}$$

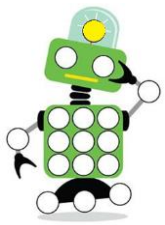
$$7653 \text{ kg} = \underline{\hspace{1cm}} \text{ t } \underline{\hspace{1cm}} \text{ kg}$$

$$3 \text{ kg } 436 \text{ g} = \underline{\hspace{2cm}} \text{ g}$$

$$6761 \text{ g} = \underline{\hspace{1cm}} \text{ kg } \underline{\hspace{1cm}} \text{ g}$$

$$2 \text{ t } 875 \text{ kg} = \underline{\hspace{2cm}} \text{ kg}$$

$$9870 \text{ kg} = \underline{\hspace{1cm}} \text{ t } \underline{\hspace{1cm}} \text{ kg}$$



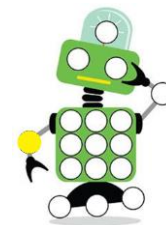
2532 g



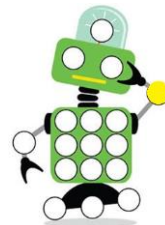
5 t 241 kg



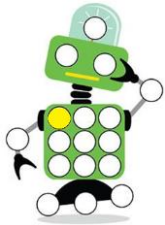
1532 kg



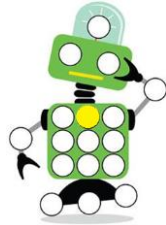
6 kg 312 g



6532 g



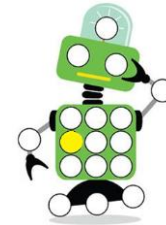
2 kg 464 g



3534 g



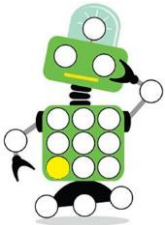
6 t 323 kg



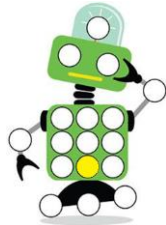
2153 kg



5 kg 331 g



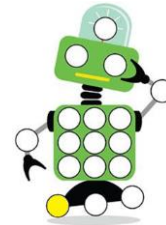
2875 kg



6 kg 761 g



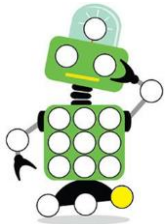
3436 g



7 t 653 kg



1545 kg



9 t 870 kg

$$4 \text{ kg } 654 \text{ g} = \underline{\hspace{2cm}} \text{ g}$$

$$4564 \text{ g} = \underline{\hspace{1cm}} \text{ kg } \underline{\hspace{1cm}} \text{ g}$$

$$2 \text{ t } 651 \text{ kg} = \underline{\hspace{2cm}} \text{ kg}$$

$$2643 \text{ kg} = \underline{\hspace{1cm}} \text{ t } \underline{\hspace{1cm}} \text{ kg}$$

$$2 \text{ kg } 654 \text{ g} = \underline{\hspace{2cm}} \text{ g}$$

$$1360 \text{ g} = \underline{\hspace{1cm}} \text{ kg } \underline{\hspace{1cm}} \text{ g}$$

$$2 \text{ t } 547 \text{ kg} = \underline{\hspace{2cm}} \text{ kg}$$

$$1265 \text{ kg} = \underline{\hspace{1cm}} \text{ t } \underline{\hspace{1cm}} \text{ kg}$$

$$6 \text{ kg } 647 \text{ g} = \underline{\hspace{2cm}} \text{ g}$$

$$2674 \text{ g} = \underline{\hspace{1cm}} \text{ kg } \underline{\hspace{1cm}} \text{ g}$$

$$2 \text{ t } 876 \text{ kg} = \underline{\hspace{2cm}} \text{ kg}$$

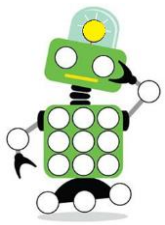
$$4686 \text{ kg} = \underline{\hspace{1cm}} \text{ t } \underline{\hspace{1cm}} \text{ kg}$$

$$2 \text{ kg } 657 \text{ g} = \underline{\hspace{2cm}} \text{ g}$$

$$8753 \text{ g} = \underline{\hspace{1cm}} \text{ kg } \underline{\hspace{1cm}} \text{ g}$$

$$2 \text{ t } 125 \text{ kg} = \underline{\hspace{2cm}} \text{ kg}$$

$$6744 \text{ kg} = \underline{\hspace{1cm}} \text{ t } \underline{\hspace{1cm}} \text{ kg}$$



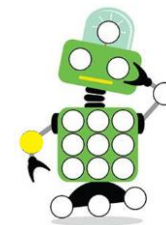
2654 g



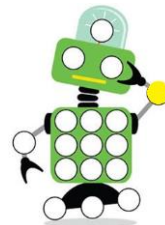
2 t 643 kg



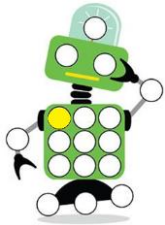
2651 kg



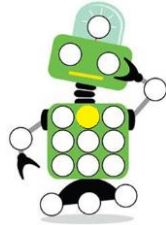
4 kg 564 g



4654 g



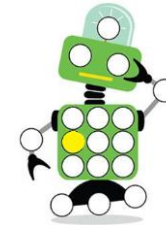
2 kg 674 g



6647 g



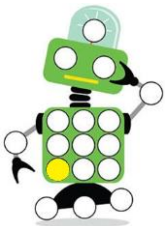
1 t 265 kg



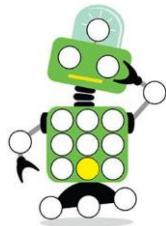
2547 kg



1 kg 360 g



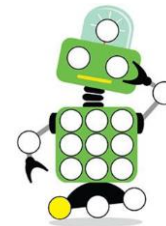
2125 kg



8 kg 753 g



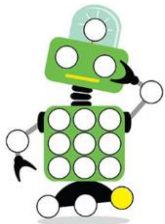
2657 g



4 t 686 kg



2876 kg



6 t 744 kg