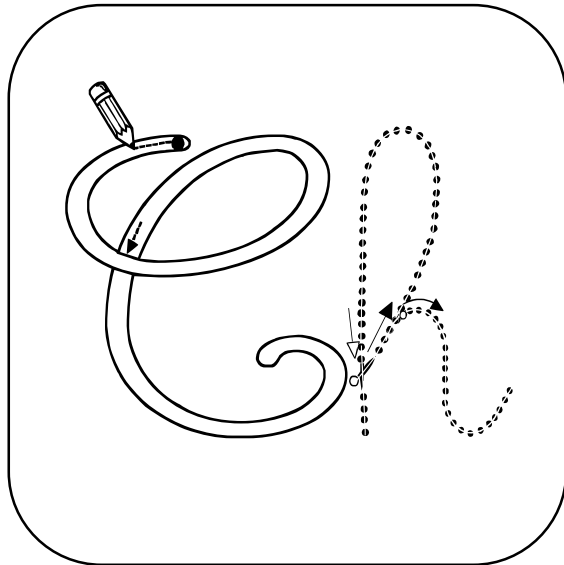
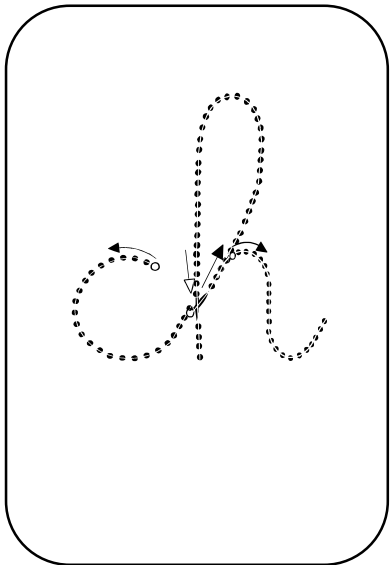


CH **ch**/ch



chat

château

moustache

ruche

chien

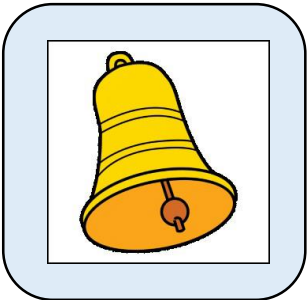
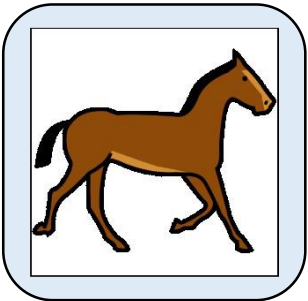
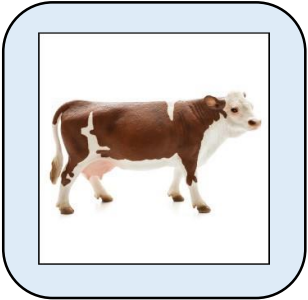
chemise

vache

fourchette

bouche

# Encodage



che

val

che

che

va

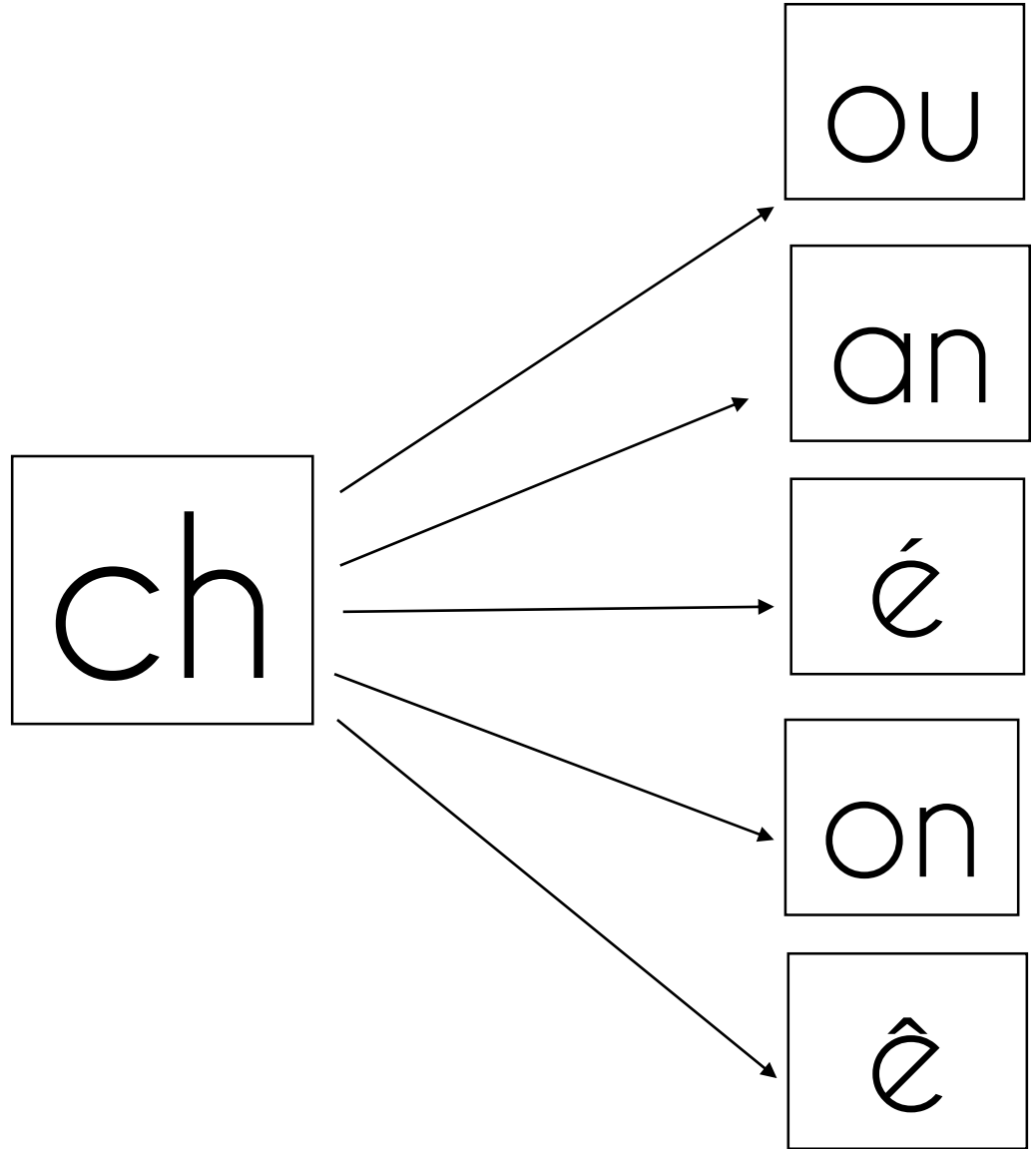
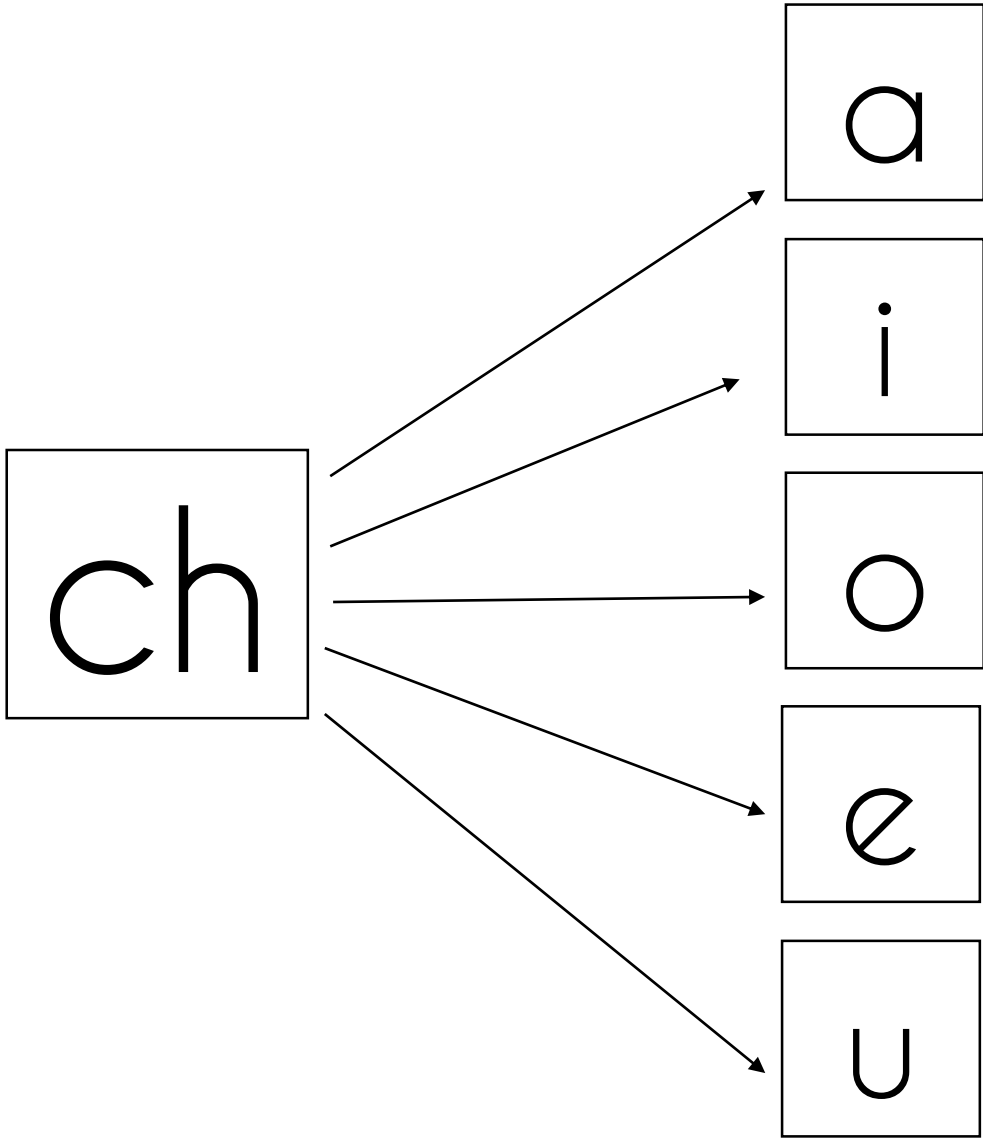
clo

vache

cheval

cloche

ch CH ch **CH**



ch CH *ch* **CH**

a

i

o

e

u

ch

ou

an

é

on

ê



ch

Lis les syllabes :

cha chu ché chi  
cho che chou chon  
chan

ich èch och ach  
ouch uch onch anch

Lis les mots :

une autruche  la douche 

une moustache  une flèche 

un parachute  du chocolat 

Lis les phrases :

Une vache est dans le pré.

Louka a du chocolat autour  
de la bouche.

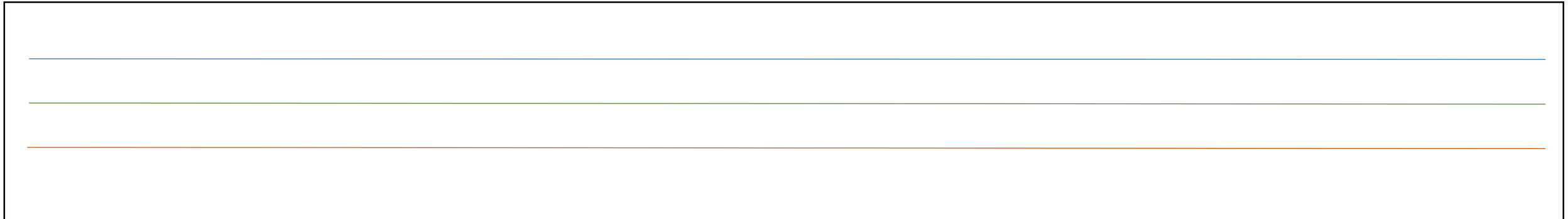
Nathan lance une flèche  
rouge.

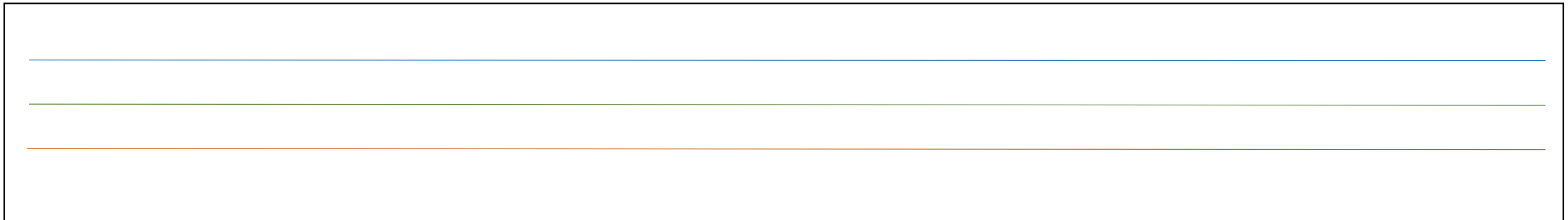
Mathéo a un parachute jaune.

Shana visite un vieux château.

Une autruche marche vite.

Gabriel a une fourchette.





Phrases à écrire :

Le chat marche vers la niche.

Il y a un parachute dans le ciel.

Il a une grande moustache marron.

La mouche est dans la douche.

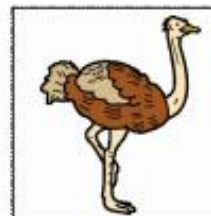
Où inventer une phrase avec les pictos...



chat



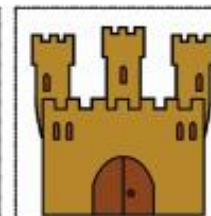
chien



autruche



ruche



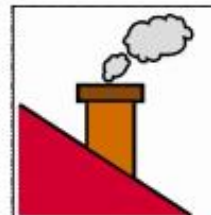
château



niche



champignon



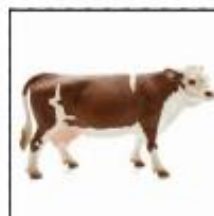
cheminée



chocolat



chemise



vache



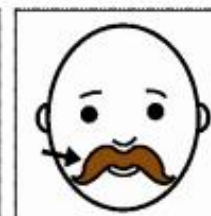
se moucher le  
nez



planche à  
repasser



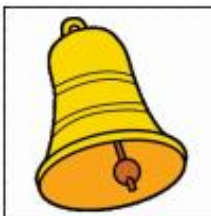
parachute



moustache



douche



cloche



cheveux



cheval



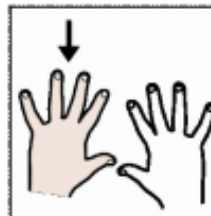
bouche



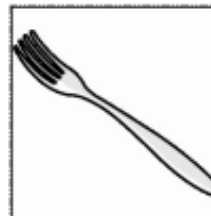
mouche



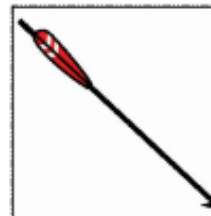
marcher



gauche



fourchette



flèche