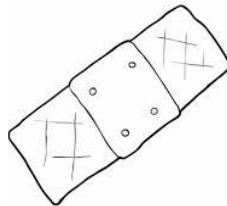
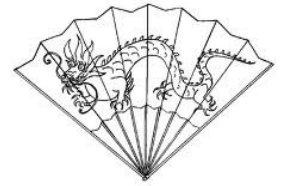
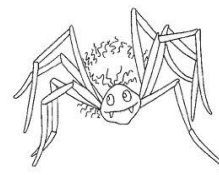
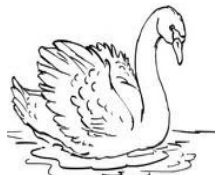


J'entends [n], je vois gn, gn

1. Colorie si tu entends [n].



2. Mets une croix où tu entends [n].



--	--	--

--	--	--	--

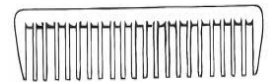
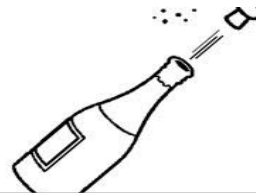
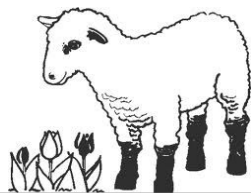
--	--

--	--	--

--	--

3. Écris les noms sous les dessins en utilisant les syllabes suivantes :

cham - greau - pei - a - gre - ta - gre - mon - gre - pa



gre - châ - li - gre - cam - gnou - tai - pa - tro - gre

