

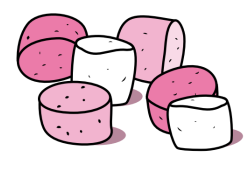
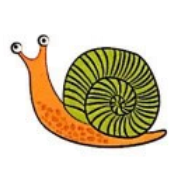
le son [g] de gâteau



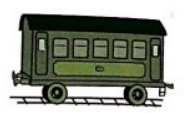
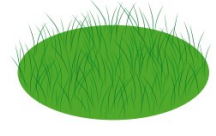
ga - go - gu mais **gui** - **gué** - **gue** - **guè**

J'écris la syllabe dans laquelle j'entends [g]:

! ge = j



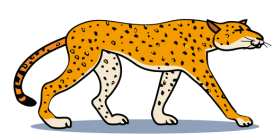
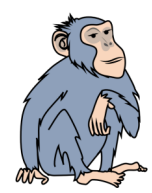
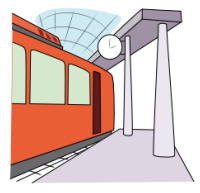
Handwriting practice line with a dot and the syllable 'ga' written on the first line, followed by six empty lines with a starting dot.



Handwriting practice line with six empty lines, each starting with a dot.



Handwriting practice line with six empty lines, each starting with a dot.



Handwriting practice line with six empty lines, each starting with a dot.

NB: Ce sont les syllabes entendues qui sont demandées.