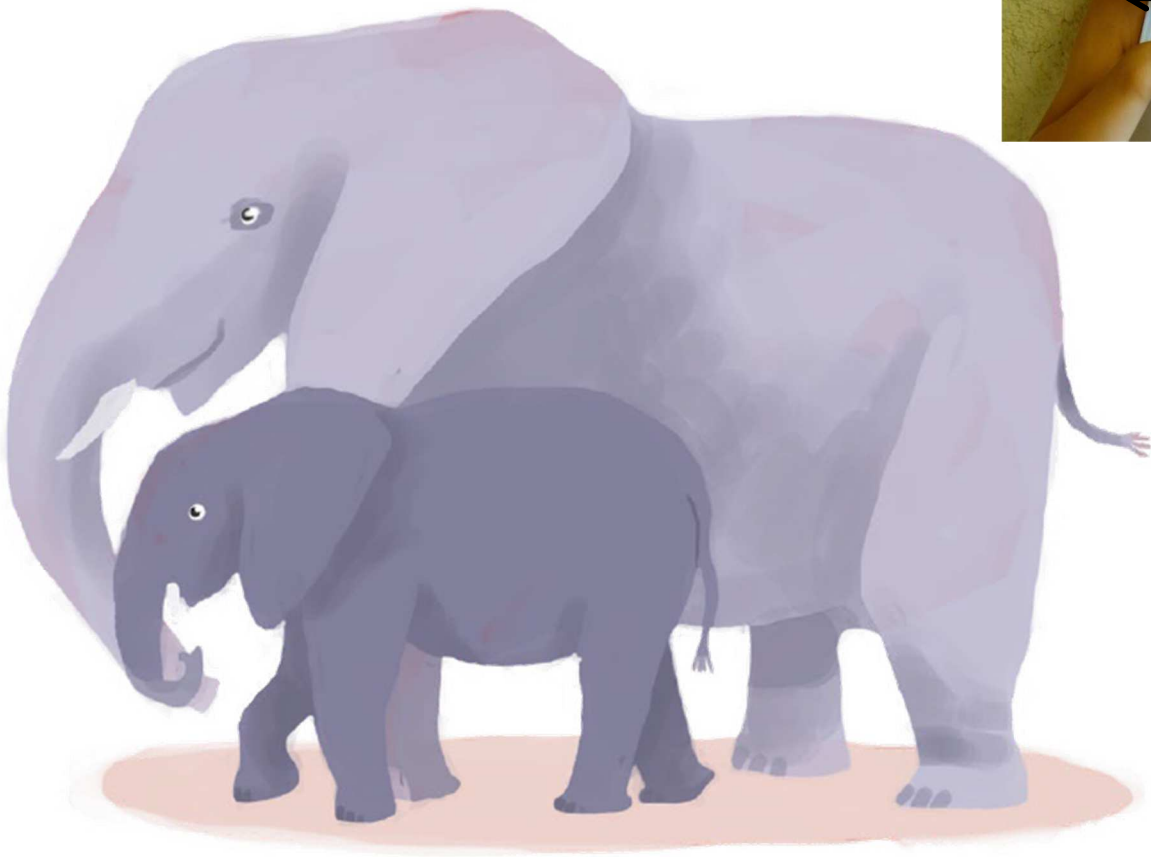
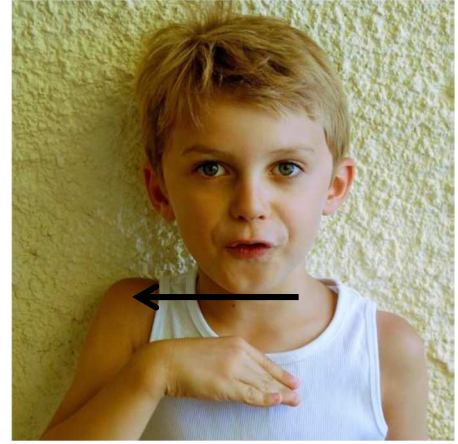


PH ph ph



les éléphants

g



j



la girafe

ge



j



le pigeon

gu



la guitare

c



s



la cerise

ç



s



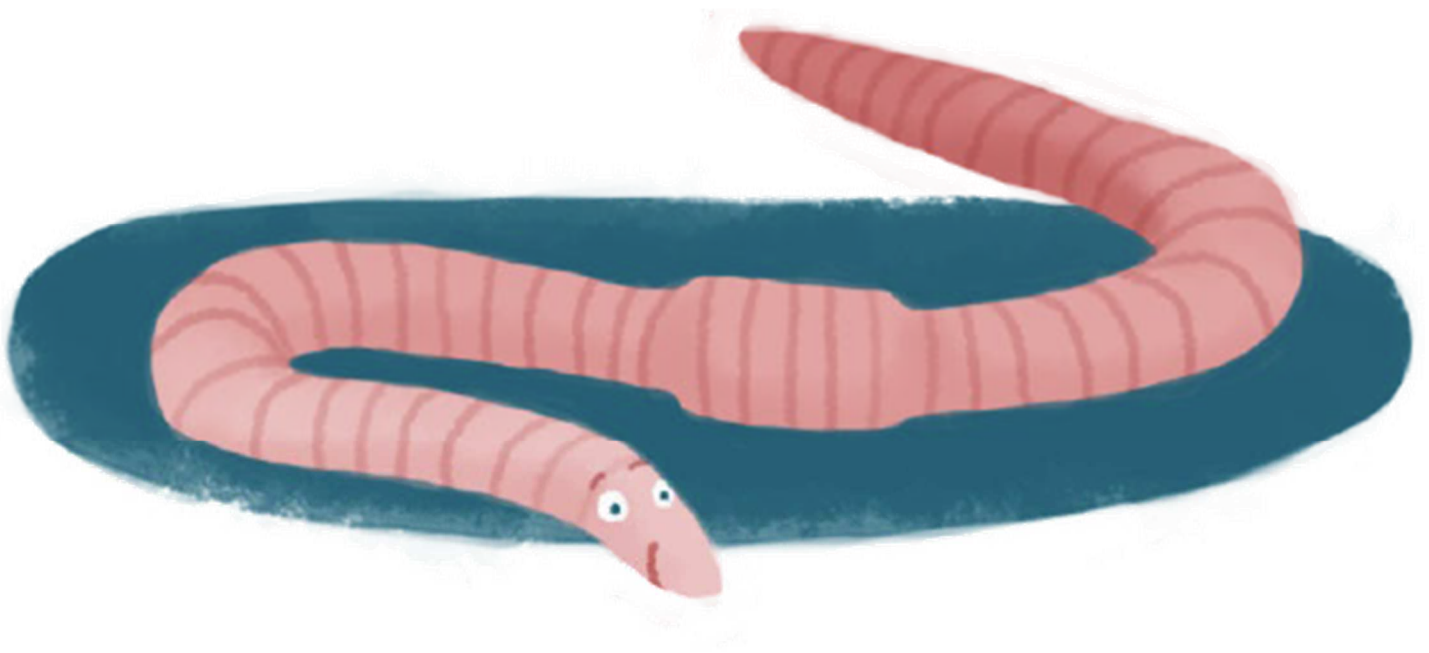
le garçon

ES es es



l'escargot

ER er er



le ver

EL el el



le miel

EC

ec

ec

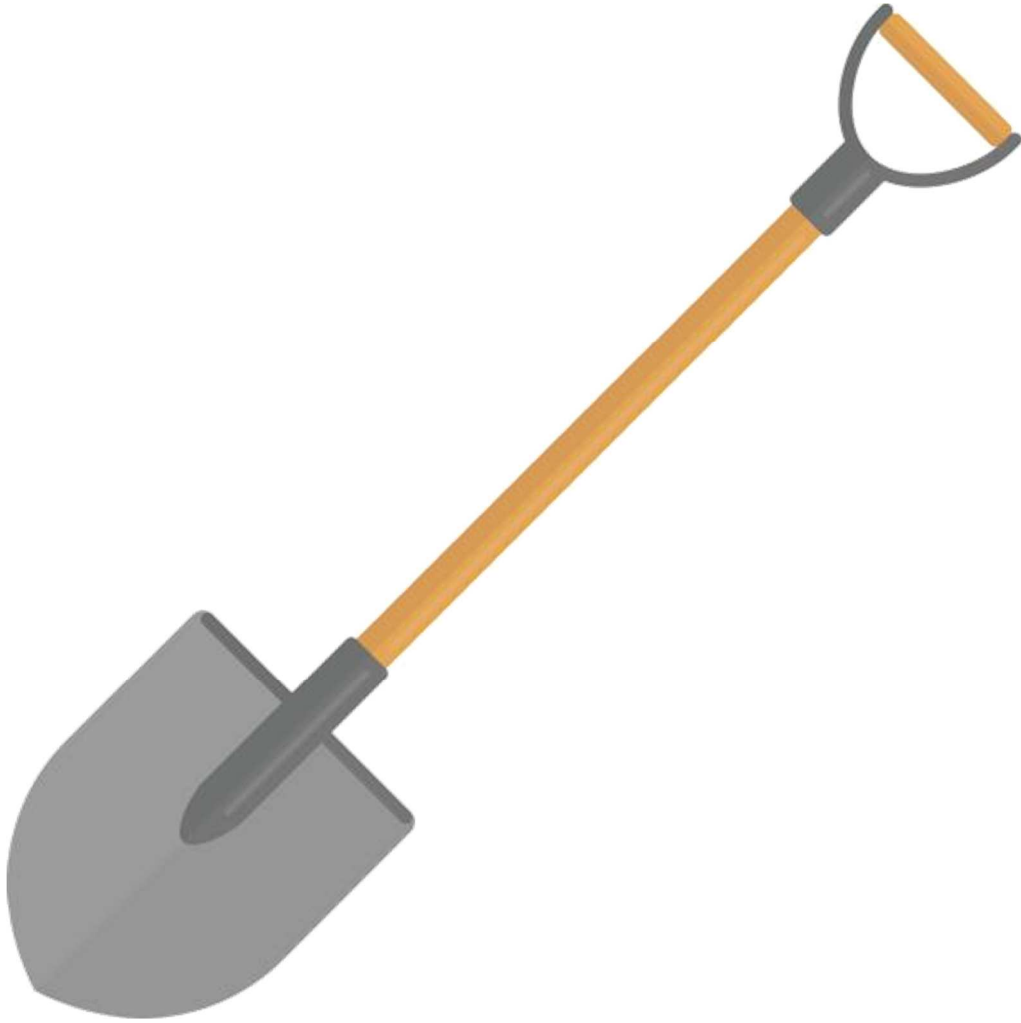


le bec

ELLE

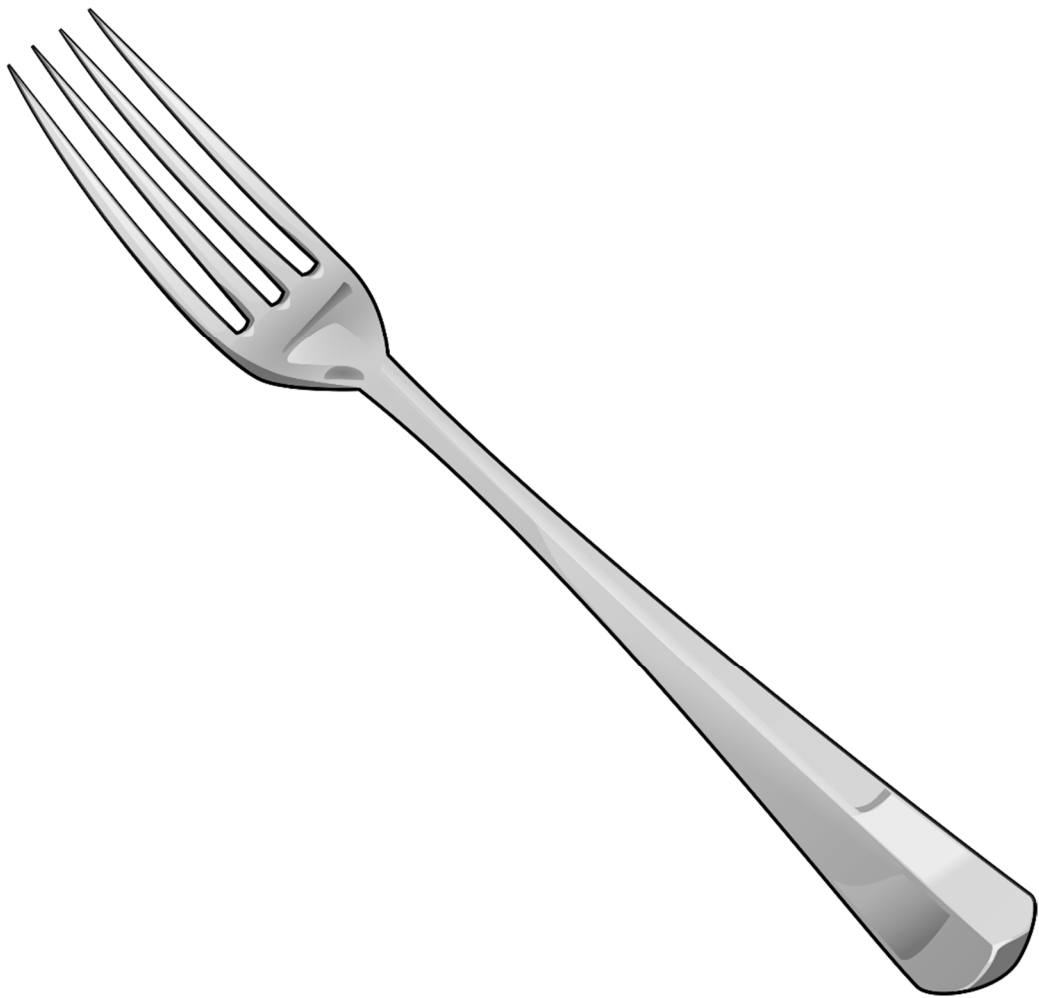
elle

elle



la pelle

ETTE ette ette



la fourchette

ESSE

esse

esse



la tresse

ERRE erre erre



la terre

ENNE enne enne



l'indienne

S



la rose

ss



s



les serpents

pare**ss**eux

ILL ill ill



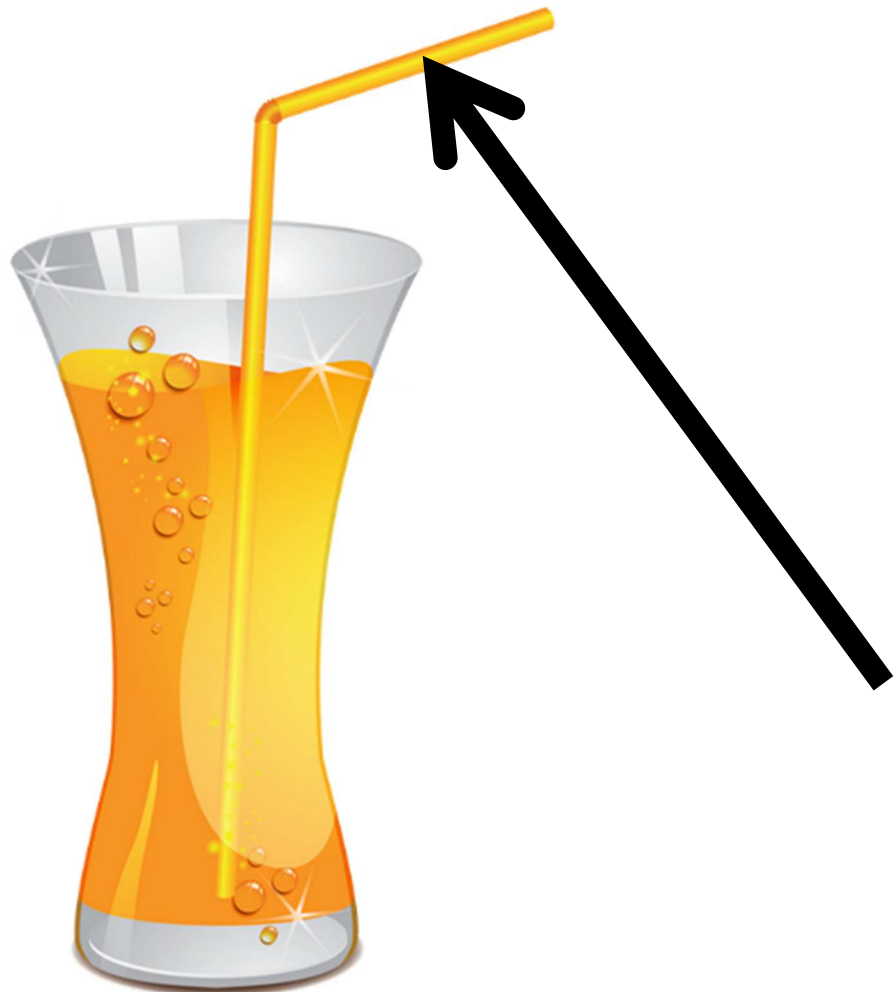
le papillon

AIL ail ail



le portail

AILLE aille aille



la paille

EIL eil eil



le soleil

EILLE eille eille



l'abeille

EUIL euil euil



l'écureuil

EUILLE euille euille



la feuille

OUIL ouil ouil



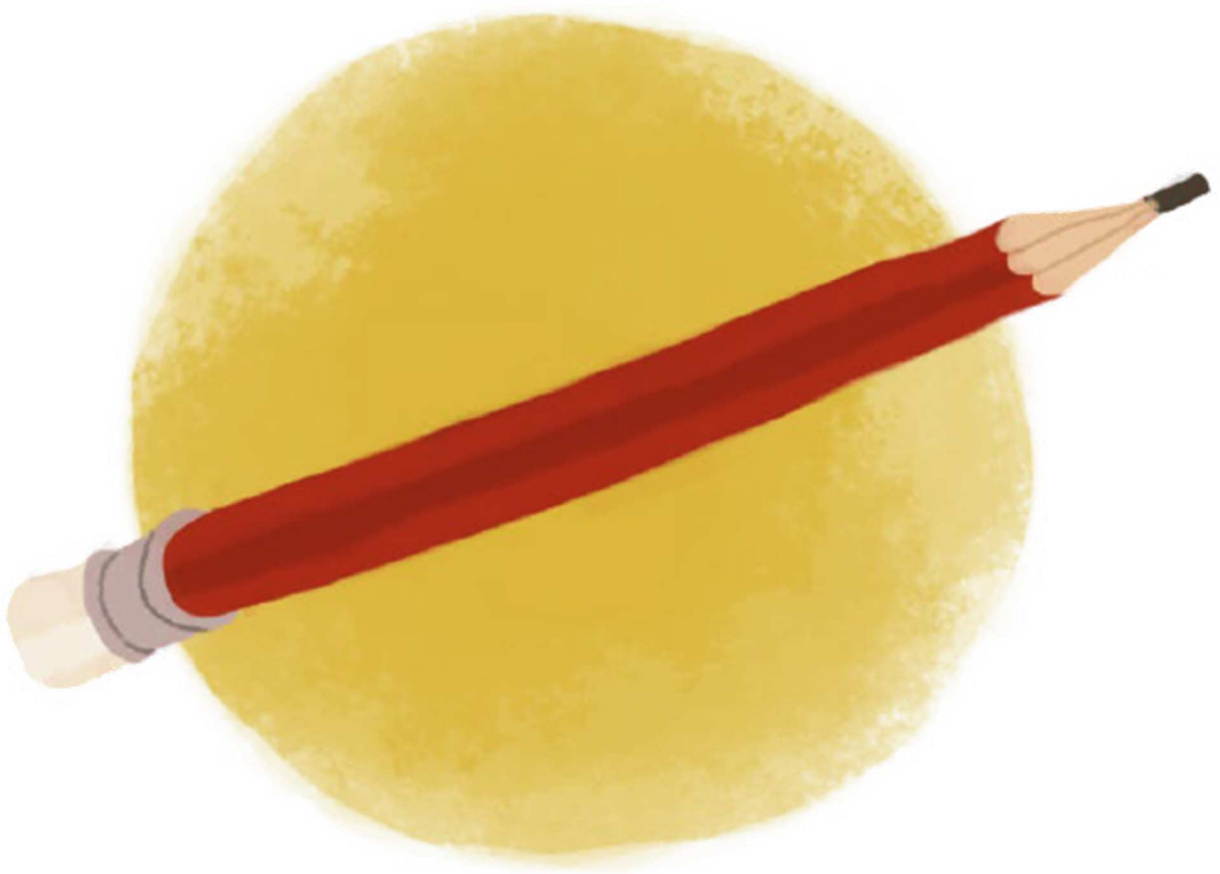
le fenouil

OUILLE ouille ouille



la grenouille

y



le crayon

ti →

si



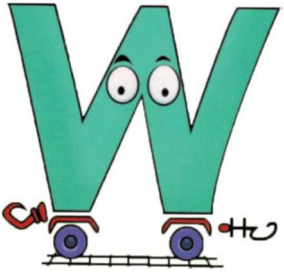
l'invitation

W

w

w

W



le wagon



le kiwi



X

x

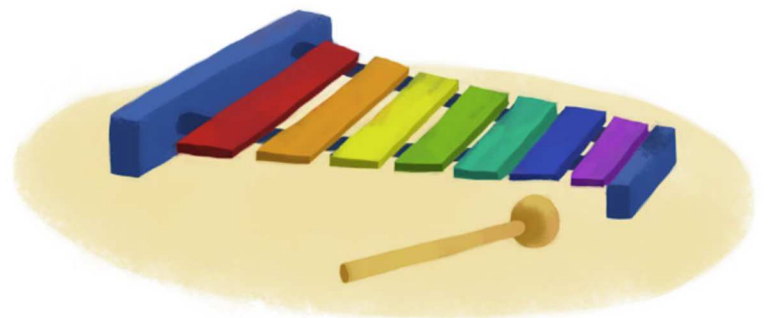
x

X

le saxophone



le xylophone



un
yn um ym



la jungle