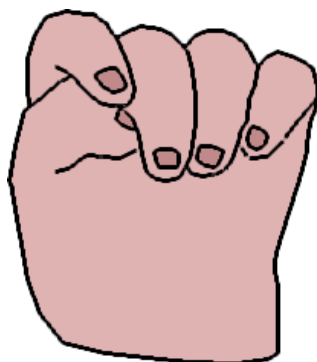


AINSI FONT, FONT, FONT

Chanson traditionnelle française



Musical notation for the first line of the song. The key signature is one sharp (F#) and the time signature is 2/4. The melody consists of quarter notes and eighth notes. A chord symbol 'G' is placed above the second measure.

Ain - si font, font, font les pe -

Musical notation for the second line of the song. The key signature is one sharp (F#) and the time signature is 2/4. The melody consists of quarter notes and eighth notes. Chord symbols 'D7' and 'G' are placed above the first and second measures respectively.

ti - tes ma - rion - net - tes. Ain - si font, font,

Musical notation for the third line of the song. The key signature is one sharp (F#) and the time signature is 2/4. The melody consists of quarter notes and eighth notes. Chord symbols 'D7' and 'G' are placed above the second and third measures respectively.

font trois p'tits tours et puis s'en vont.