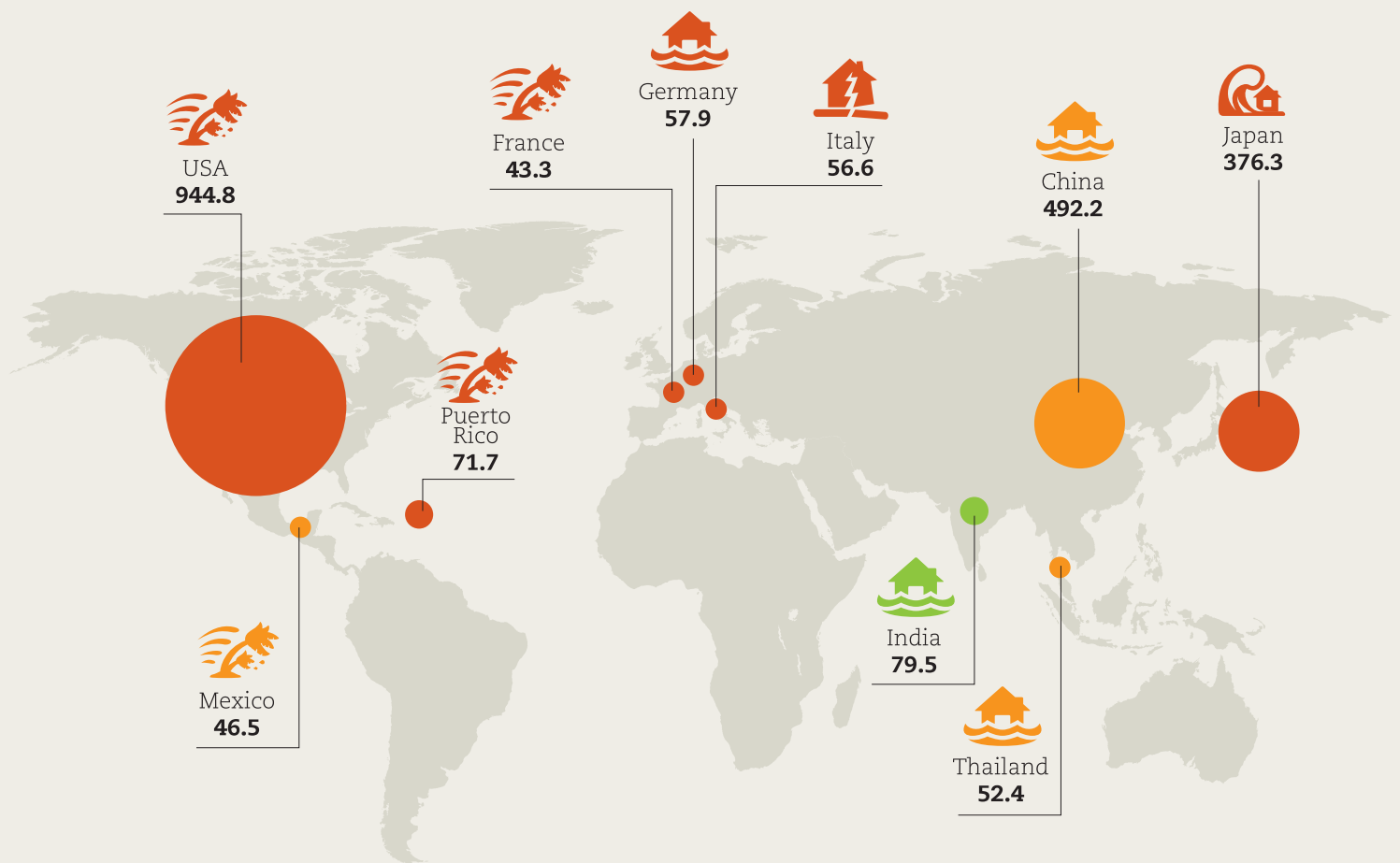


Figure 1

Top 10 countries/territories for cumulative losses compared to top 10 countries/territories for losses relative to GDP 1998-2017³

Top 10 countries/territories in terms of absolute losses (billion US\$) 1998-2017

- High income
- Upper-middle income
- Lower-middle income
- Low income



Disaster type responsible for the majority of losses

- Earthquake
- Extreme temperature
- Earthquake & Tsunami
- Flood
- Storm
- Drought

³ Excluding small states. See Annex for the list of small states. See Annex for the methodology on the calculation of economic losses related to GDP