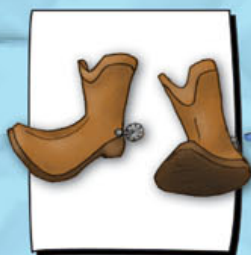
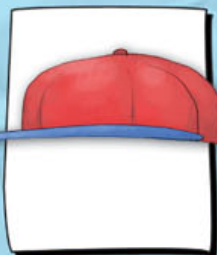


My Clothes



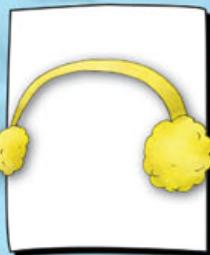
boots
My **boots** are brown.



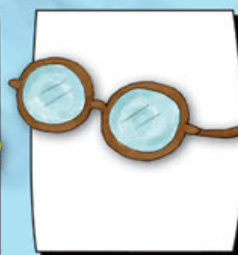
a cap
I'm wearing a **cap**.



a dress
a pretty, pink **dress**



earmuffs
Earmuffs are on my ears.



glasses
Glasses are on my face.



gloves
Gloves are on my hands.



a hat
A **hat** is on my head.



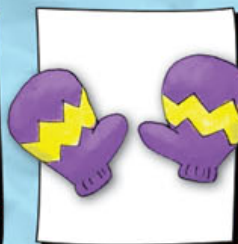
a jacket
I'm wearing a **jacket**.



jeans
I'm wearing **jeans**.



leggings
My **leggings** are black.



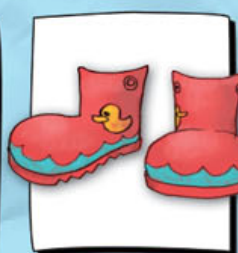
mittens
purple and yellow **mittens**



pajamas
I'm wearing **pajamas**.



pants
long, brown **pants**



rain boots
Rain **boots** are on my feet.



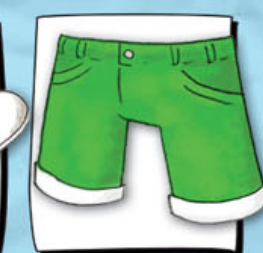
a scarf
I'm wearing a **scarf**.



a shirt
My **shirt** is gray.



shoes
Shoes are on my feet.



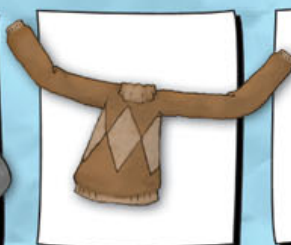
shorts
My **shorts** are green.



a skirt
My **skirt** is purple and yellow.



socks
black and orange **socks**



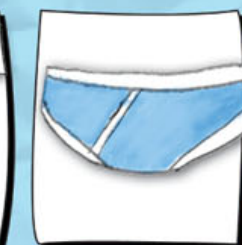
a sweater
I'm wearing a **sweater**.



a swimsuit
a very colorful **swimsuit**



a t-shirt
My **t-shirt** is orange.



underpants
Underpants are on my head.

Q: Is this (a hat)?
A. Yes. / No.

Q: Are these (shoes)?
A. Yes. / No.

Q: (Shirt) on your (head)?
A. Yes. / No.

Q: What color is your (t-shirt)?
A. It's (blue).

Q: Is (Yuto's t-shirt) blue?
A. Yes, it is. / No, it's not.

Q: Are (Yuto's socks) white?
A. Yes, they are. / No, they aren't.

Q: What are you wearing?
A. I'm wearing (a t-shirt / jeans).

Q: Where do you put/wear (boots)?
A. On my (feet).

