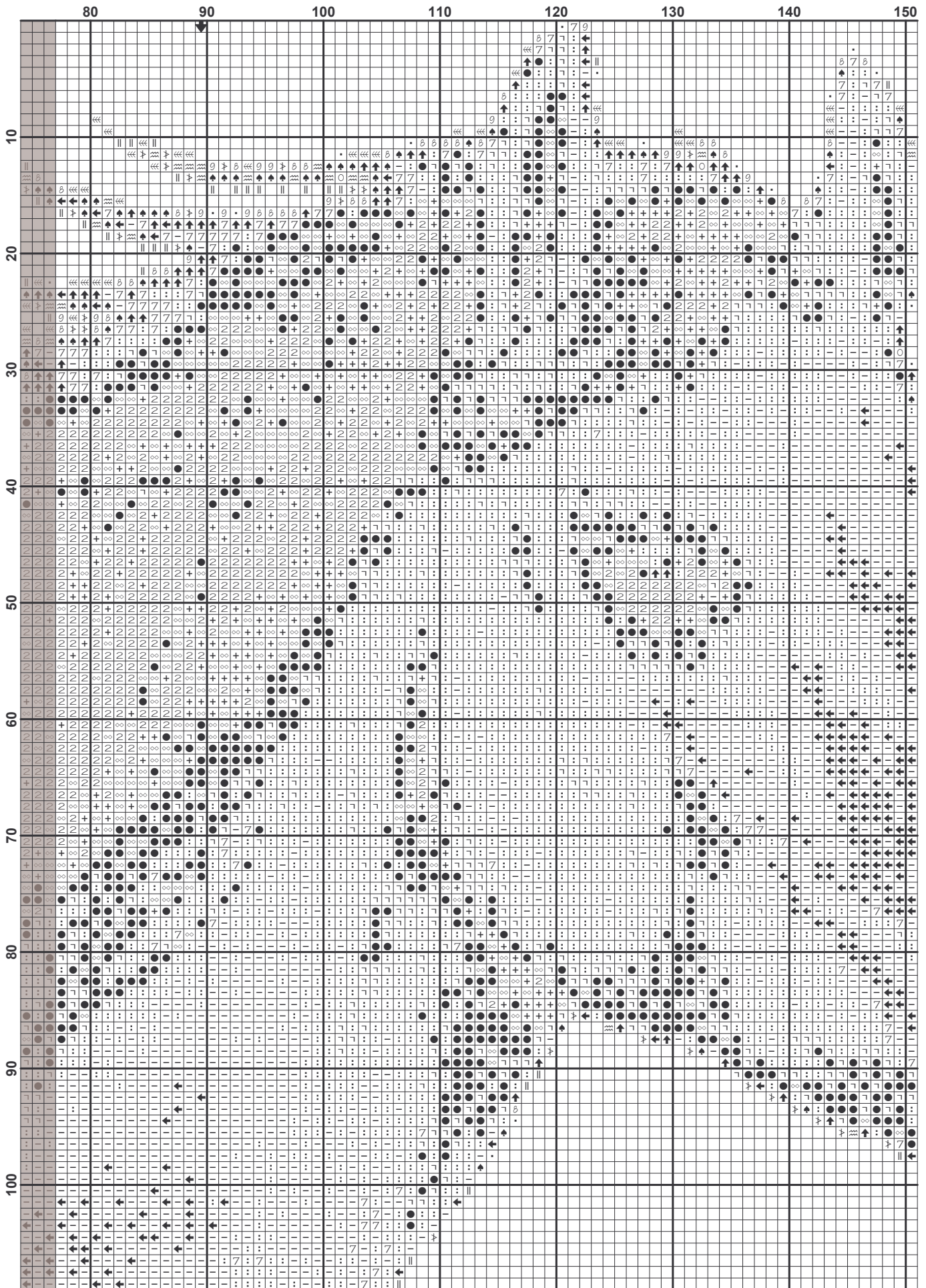
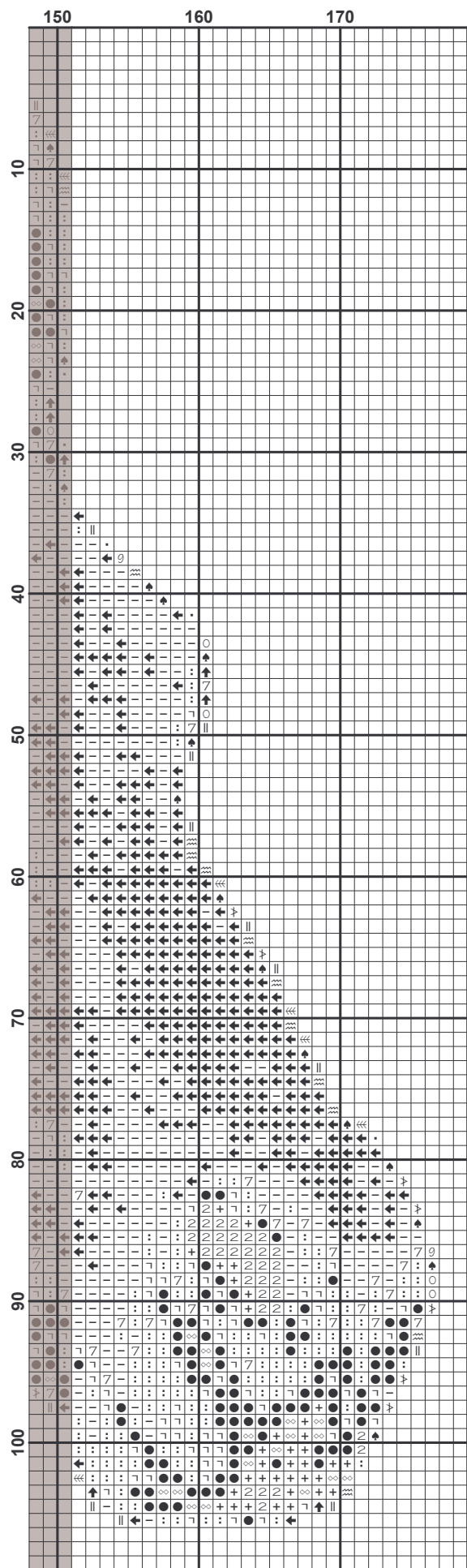
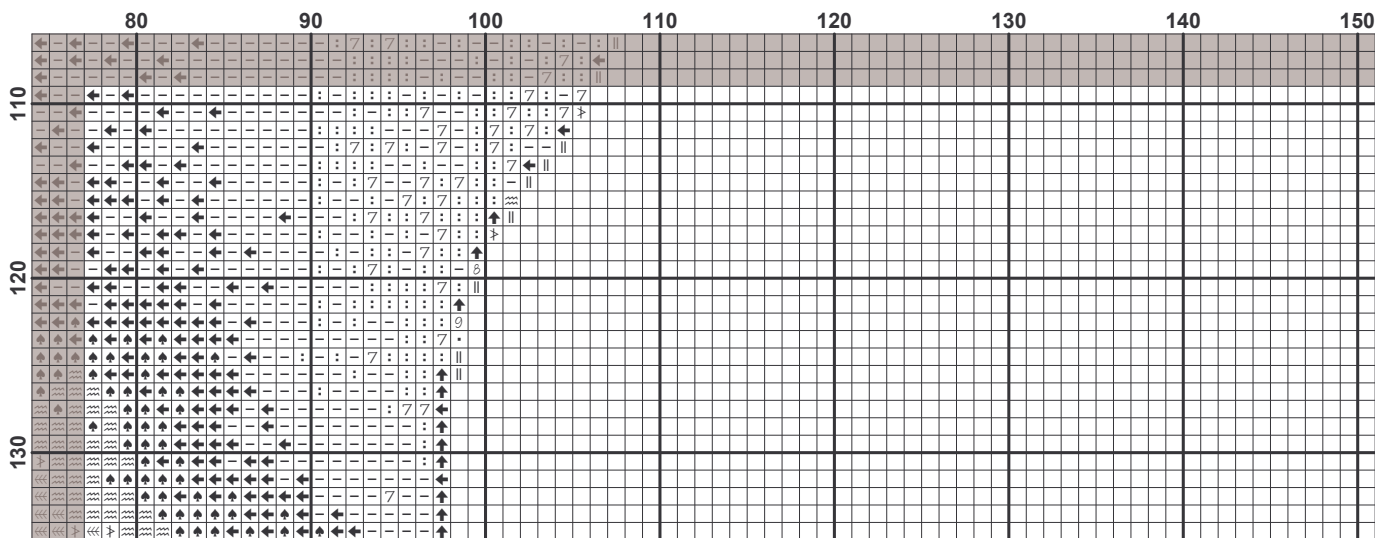


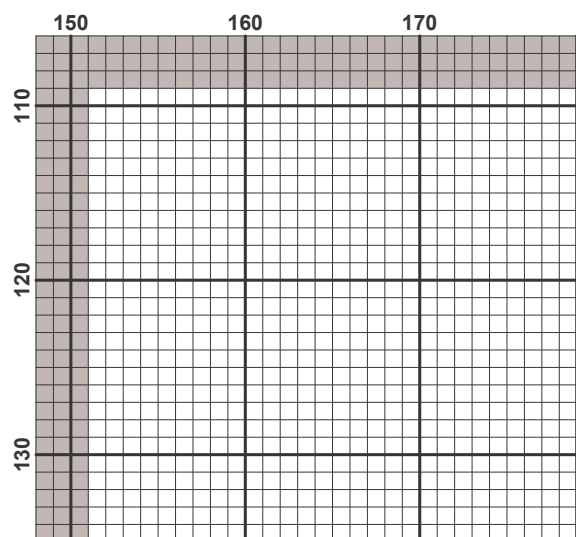
| | | | | | | | |
|-----|----|----|----|----|----|----|----|
| | 10 | 20 | 30 | 40 | 50 | 60 | 70 |
| 10 | | | | | | | |
| 20 | | | | | | | |
| 30 | | | | | | | |
| 40 | | | | | | | |
| 50 | | | | | | | |
| 60 | | | | | | | |
| 70 | | | | | | | |
| 80 | | | | | | | |
| 90 | | | | | | | |
| 100 | | | | | | | |




















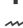




| | 10 | 20 | 30 | 40 | 50 | 60 | 70 |
|-----|----|----|----|----|----|----|----|
| 110 | | | • | • | • | • | • |
| 120 | | | • | • | • | • | • |
| 130 | | | • | • | • | • | • |





Pattern Name: cheval
Designed By: le point de croix de martine
Fabric: Aida 25, White
 179w X 135h Stitches
Size: 25 Count, 18.19w X 13.72h cm

Floss Used for Full Stitches:

| Symbol | Strands | Type | Number | Color |
|---|---------|------|--------|----------------------|
|  | 2 | DMC | 154 | Grape-VY DK |
|  | 2 | DMC | 221 | Shell Pink-VY DK |
|  | 2 | DMC | 223 | Shell Pink-LT |
|  | 2 | DMC | 310 | Black |
|  | 2 | DMC | 356 | Terra Cotta-MD |
|  | 2 | DMC | 554 | Violet-LT |
|  | 2 | DMC | 758 | Terra Cotta-VY LT |
|  | 2 | DMC | 762 | Pearl Gray-VY LT |
|  | 2 | DMC | 818 | Baby Pink |
|  | 2 | DMC | 838 | Beige Brown-VY DK |
|  | 2 | DMC | 948 | Peach-VY LT |
|  | 2 | DMC | 3024 | Brown Gray-VY LT |
|  | 2 | DMC | 3072 | Beaver Gray-VY LT |
|  | 2 | DMC | 3371 | Black Brown |
|  | 2 | DMC | 3713 | Salmon-VY LT |
|  | 2 | DMC | 3721 | Shell Pink-DK |
|  | 2 | DMC | 3779 | Terra Cotta-UL VY LT |
|  | 2 | DMC | 3861 | Cocoa-LT |
|  | 2 | DMC | 3863 | Mocha Beige-MD |
|  | 2 | DMC | B5200 | Snow White |