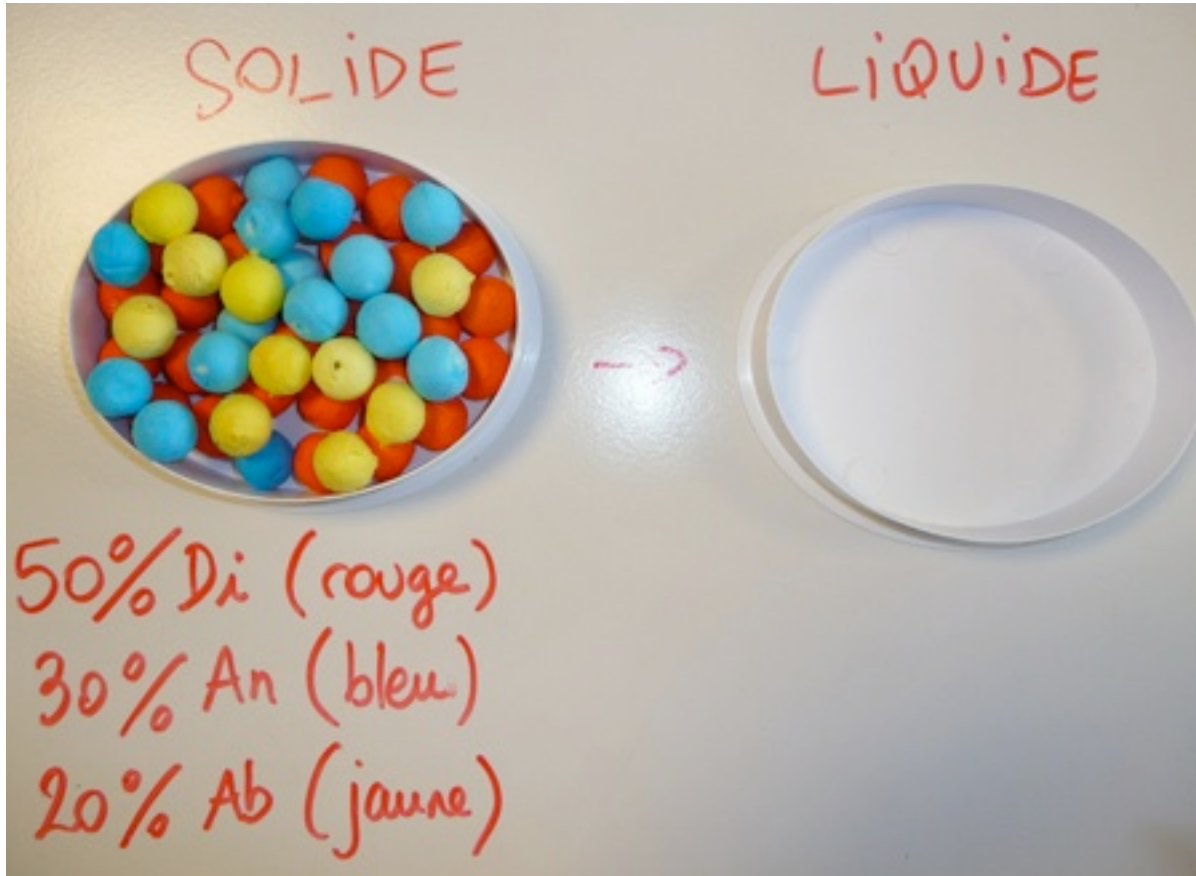
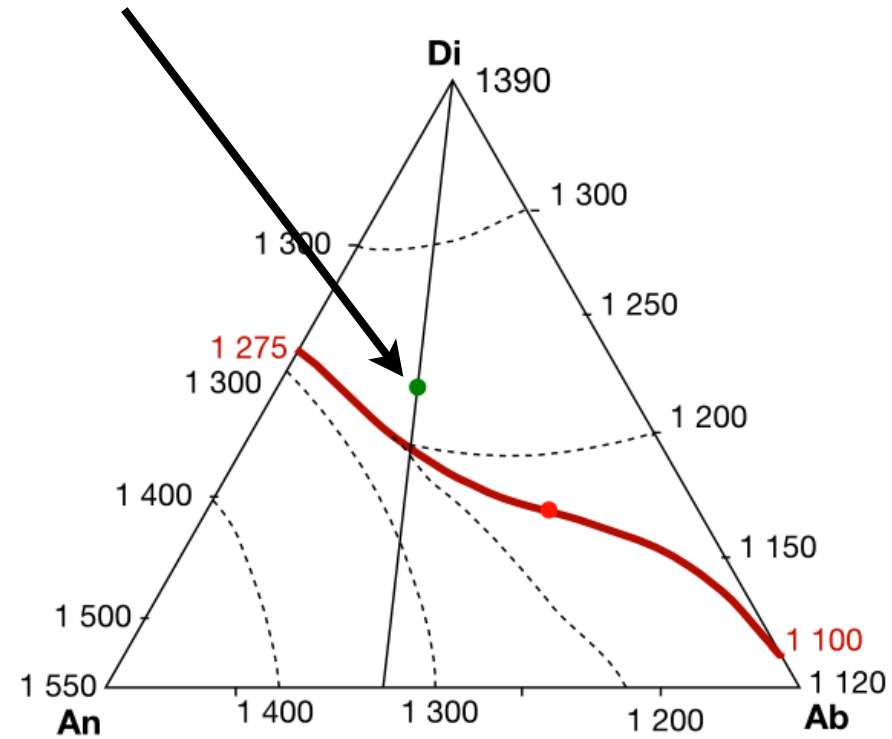
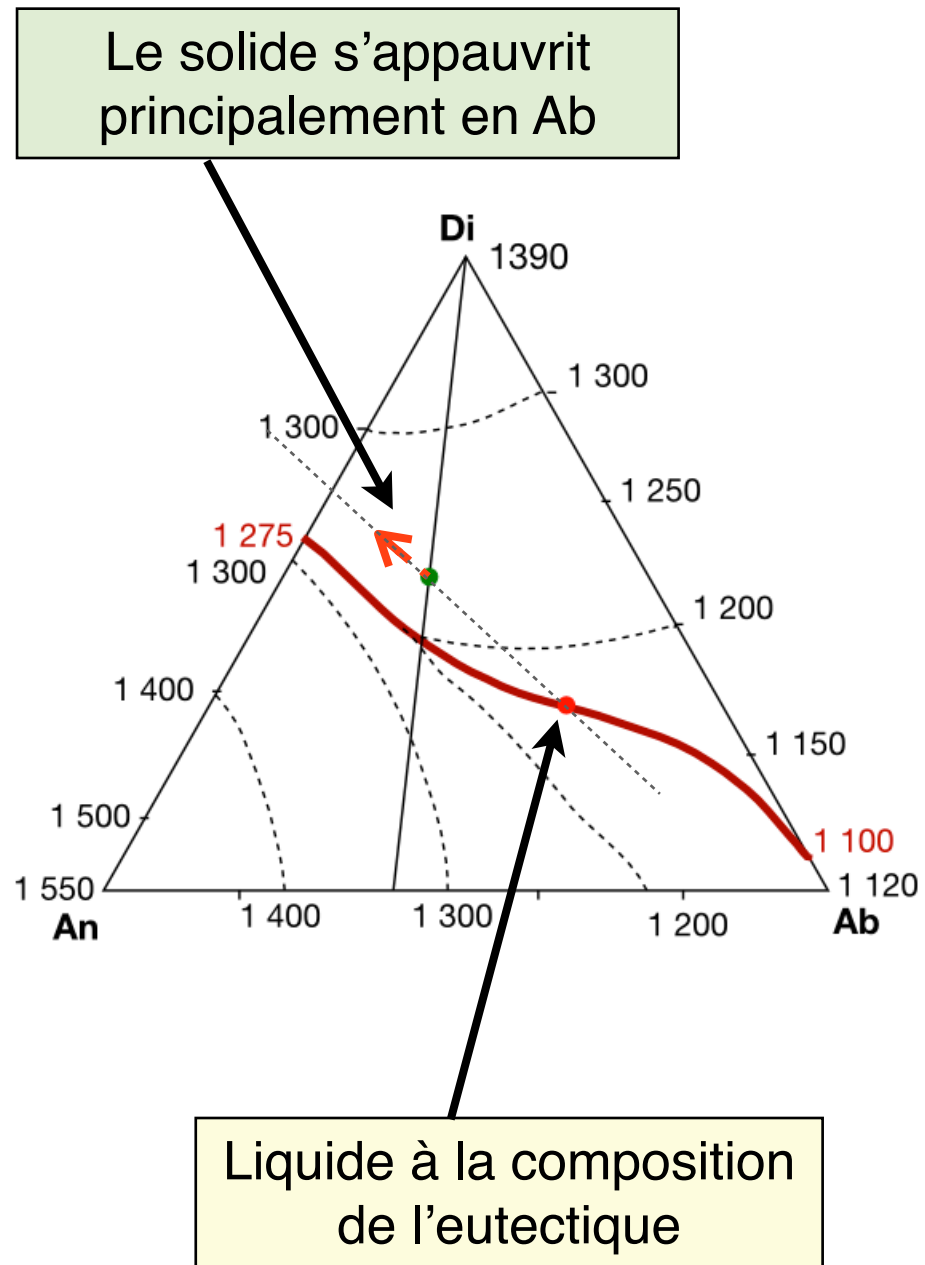
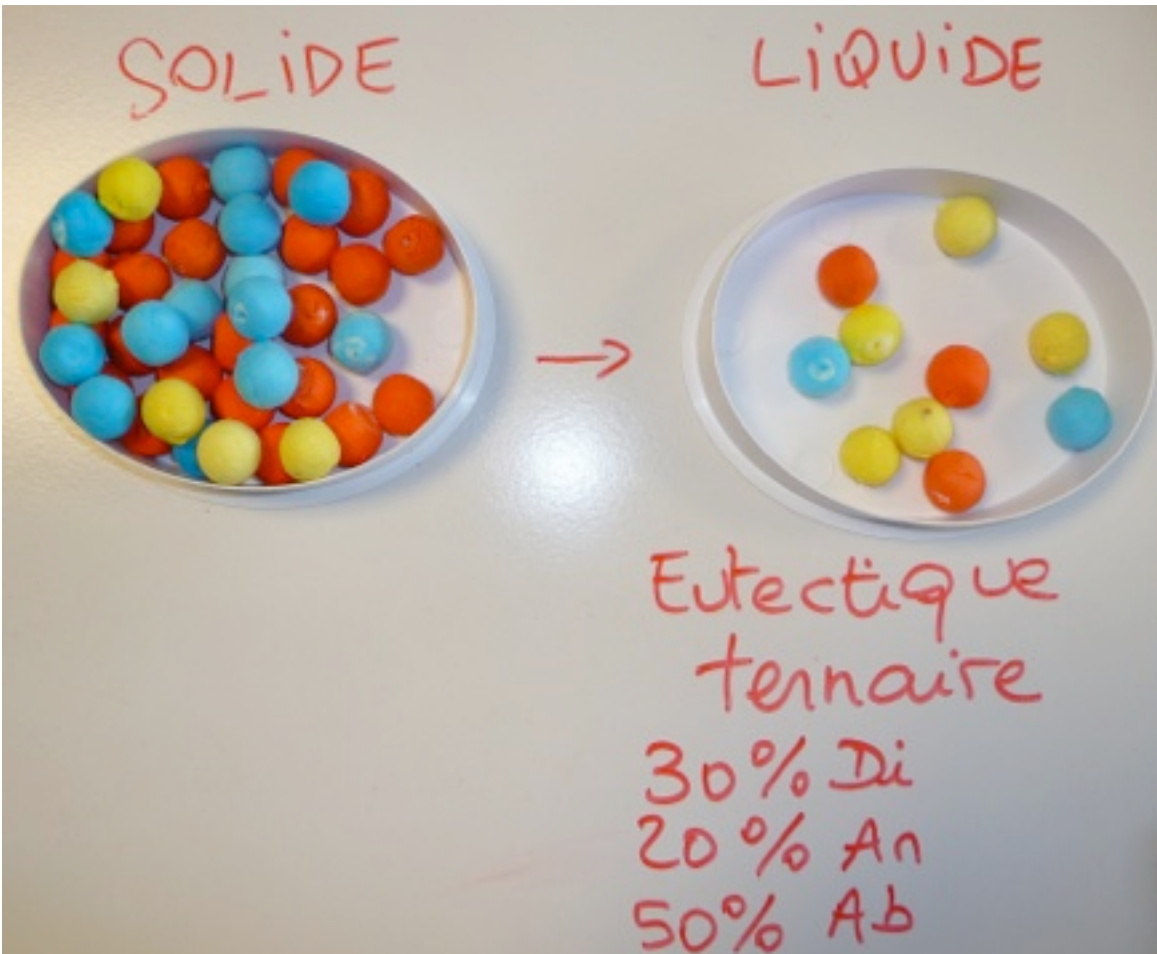


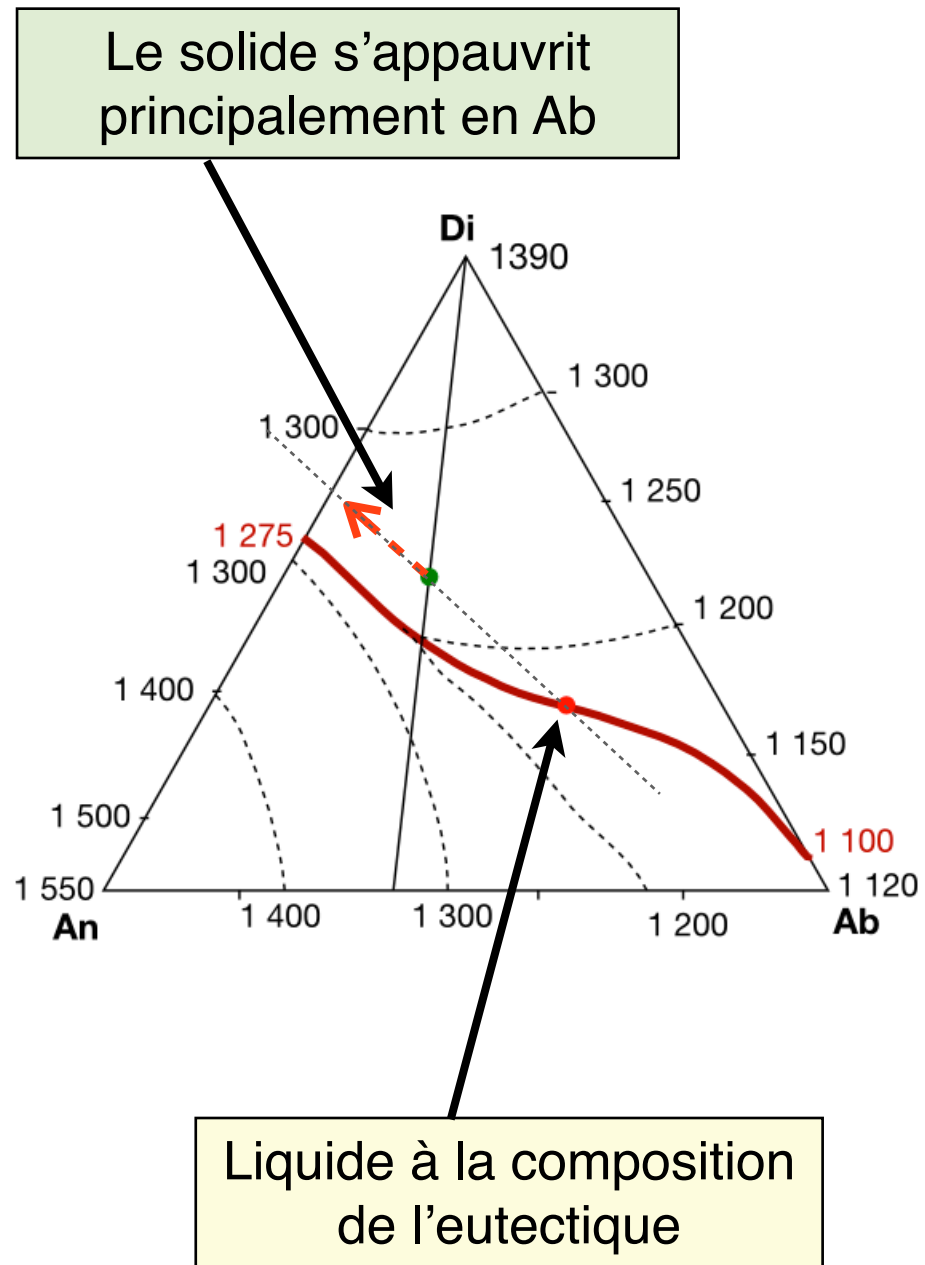
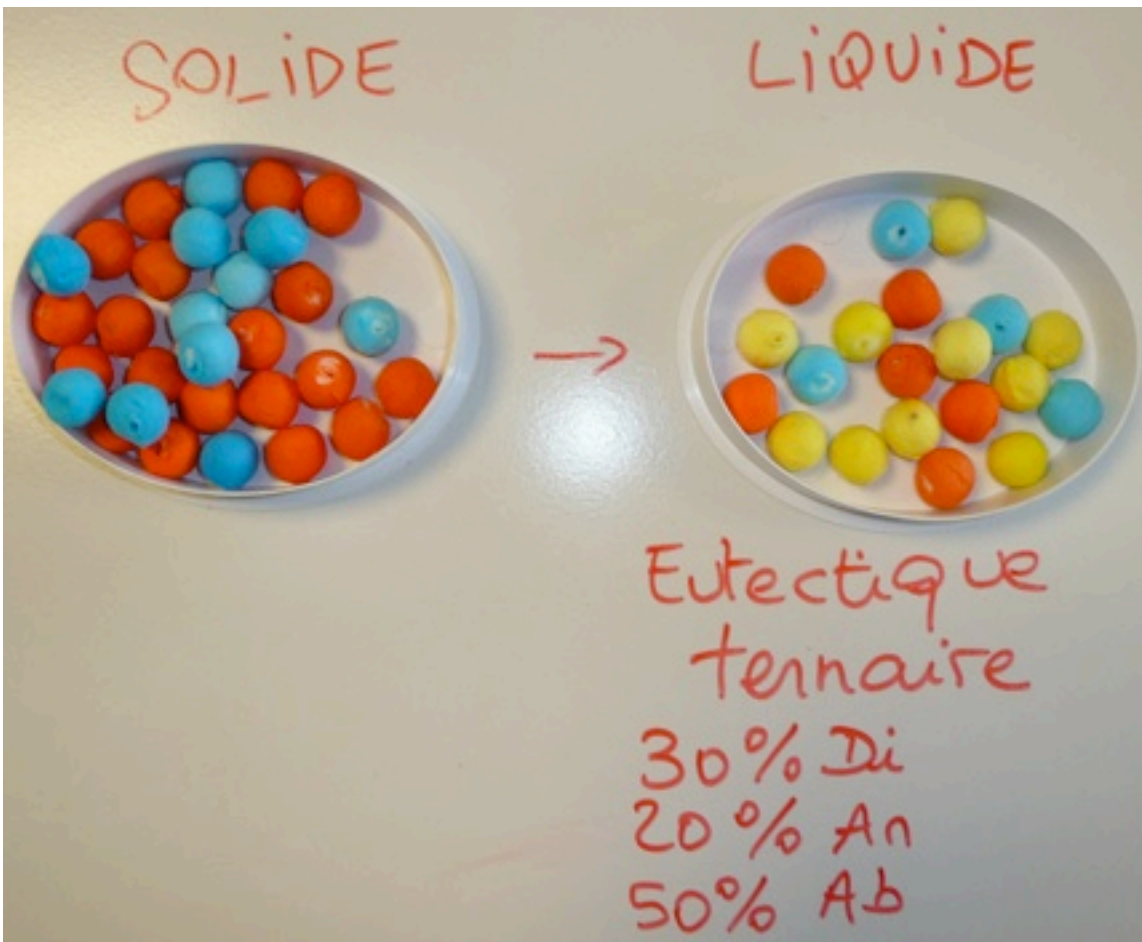
La fusion en diagramme ternaire avec des minéraux de fêta

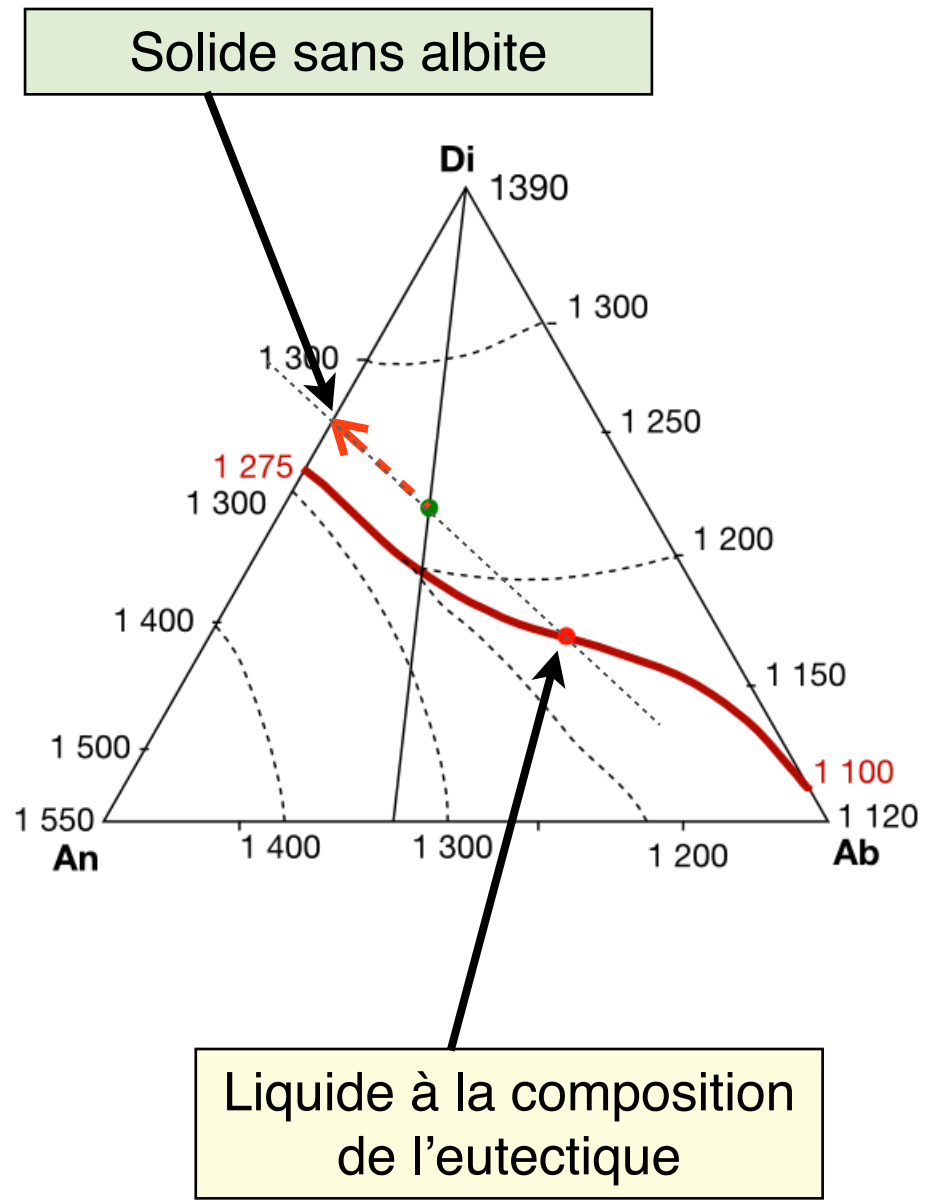
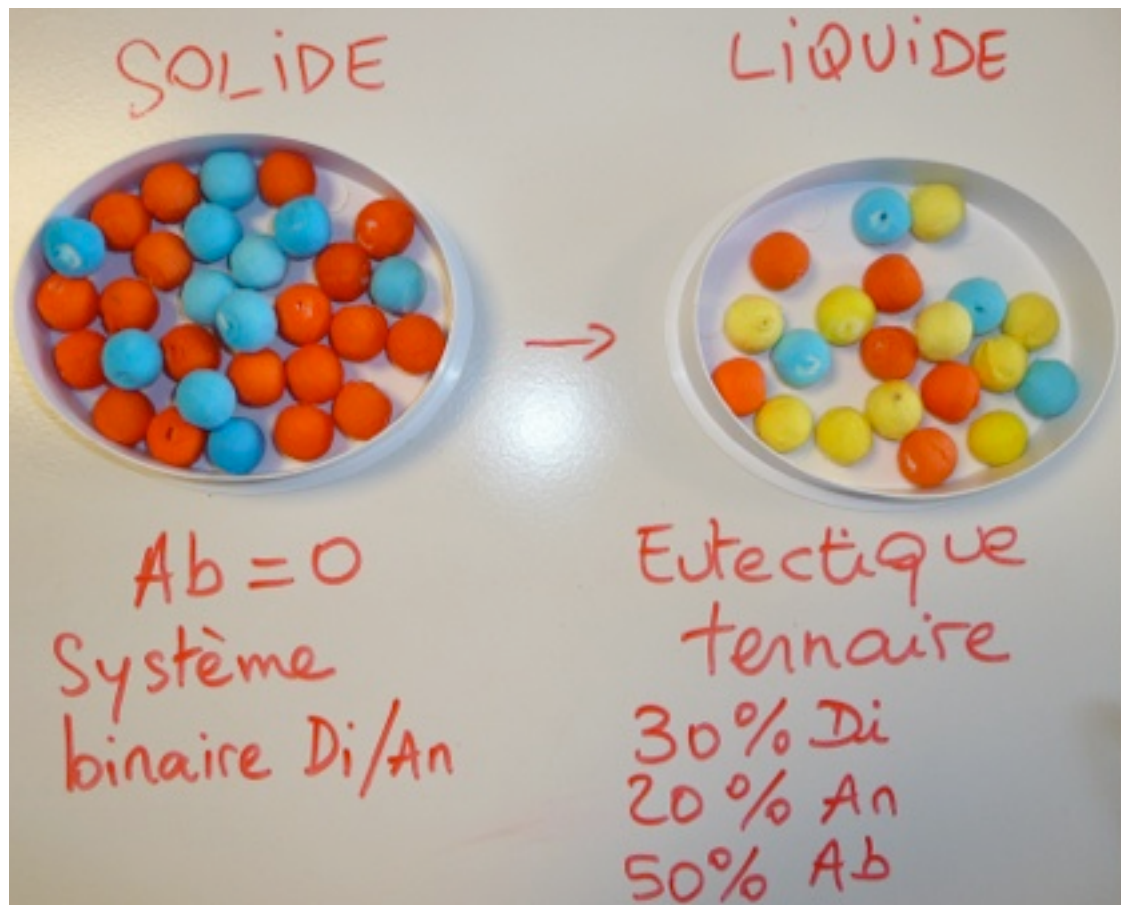


Mélange de départ
(solide)

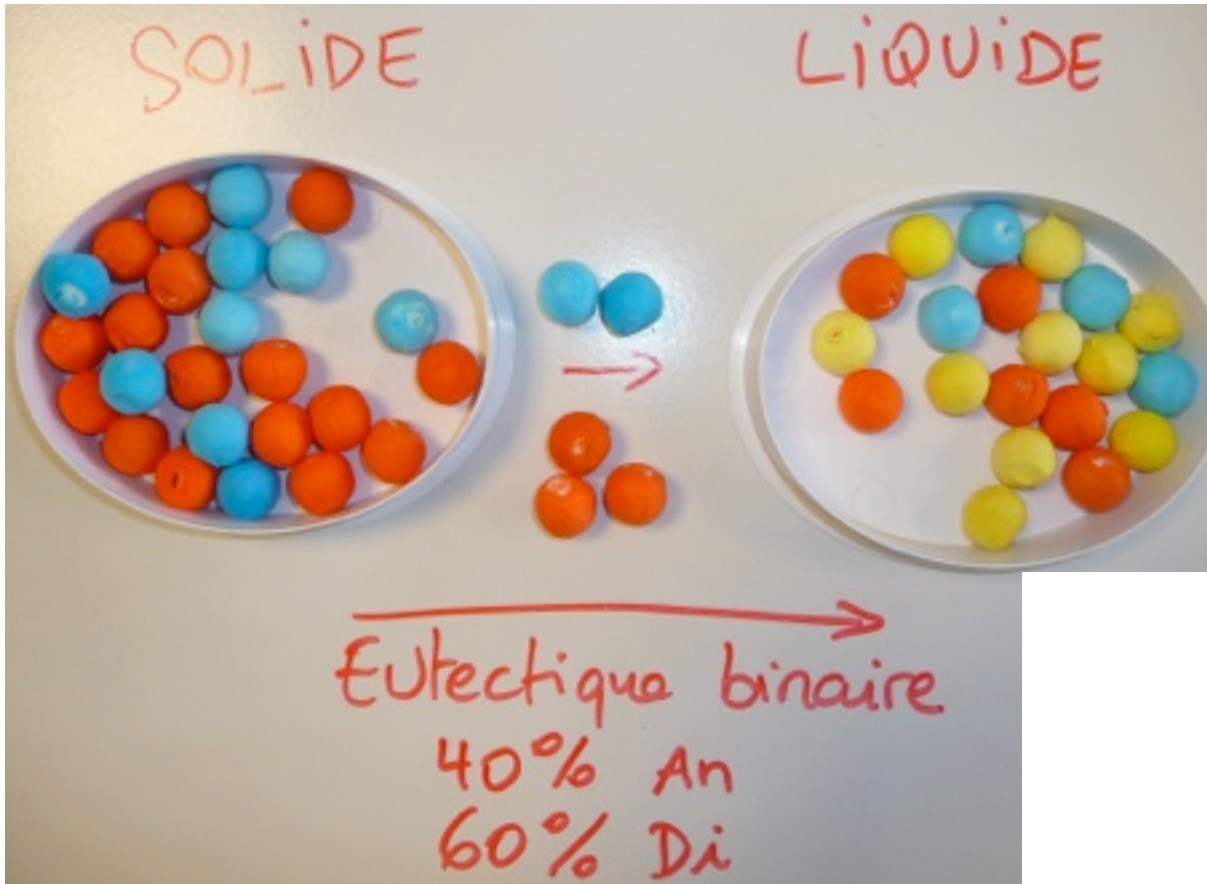








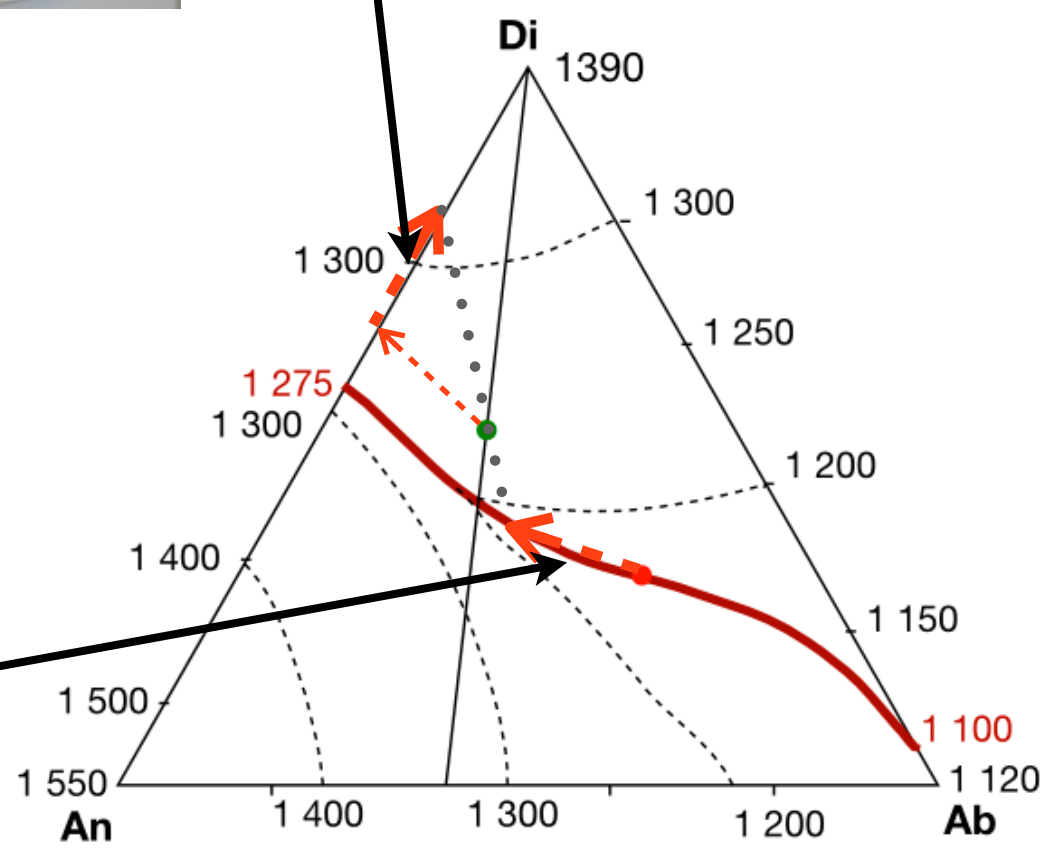
Le solide résiduel n'a plus d'albite : il s'agit d'un mélange binaire Di/An : le liquide qui «sort» à partir de maintenant a la composition de l'eutectique binaire



Solide s'appauvrit en An jusqu'à sa disparition

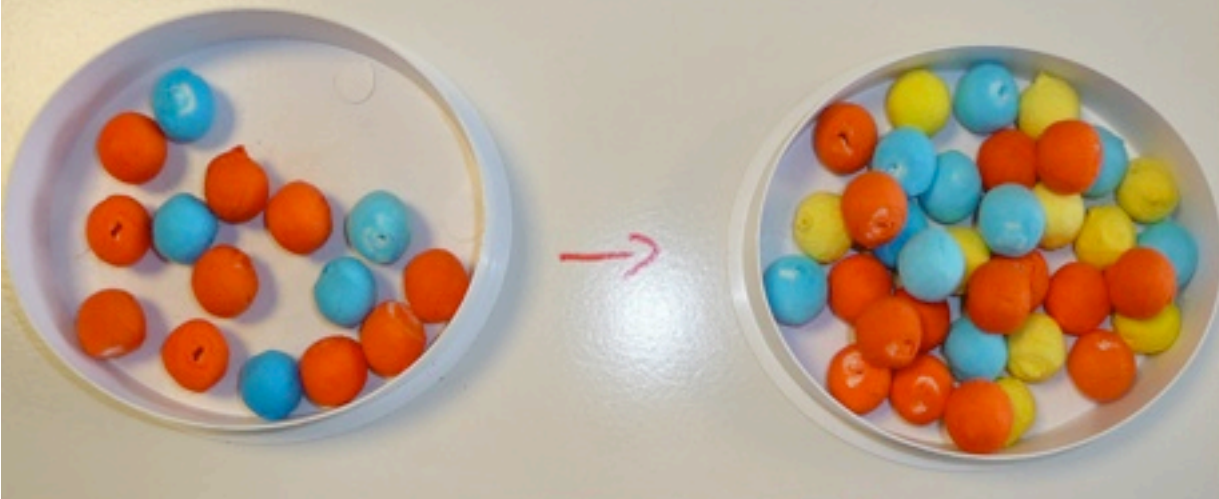
La composition du liquide se rapproche de l'eutectique binaire Di/An en suivant la «vallée» cotectique

Liquide suivant le cotectique



SOLIDE

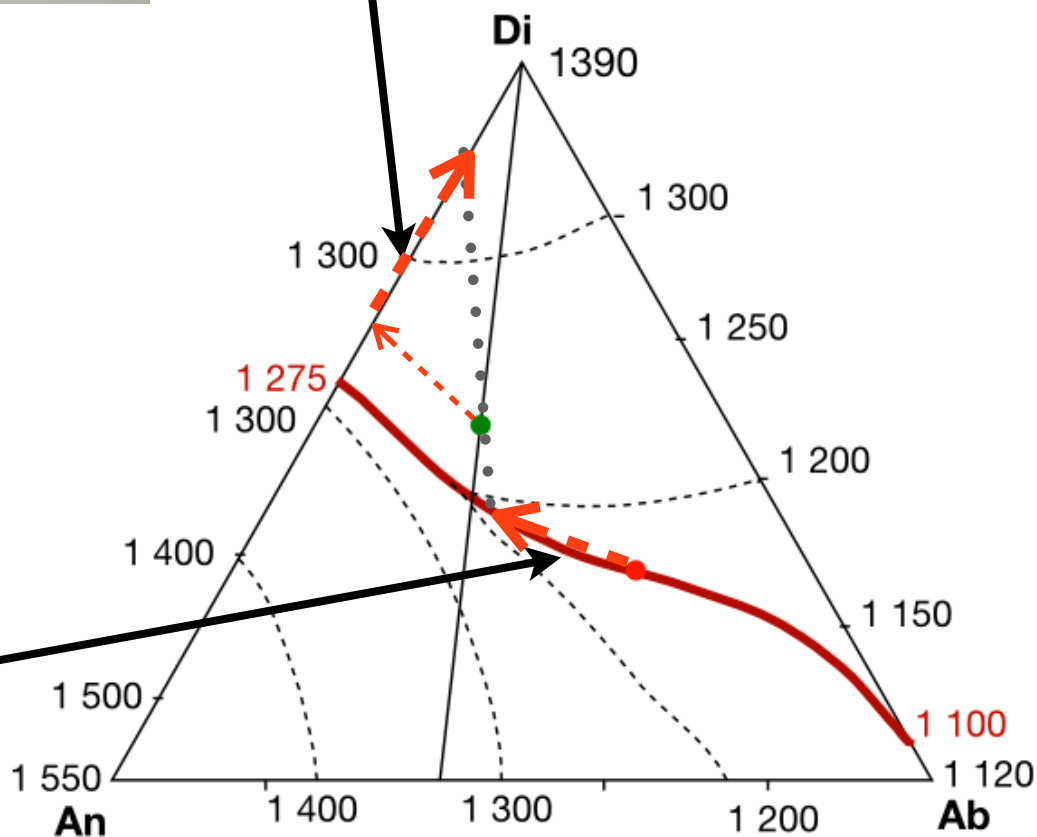
LIQUIDE

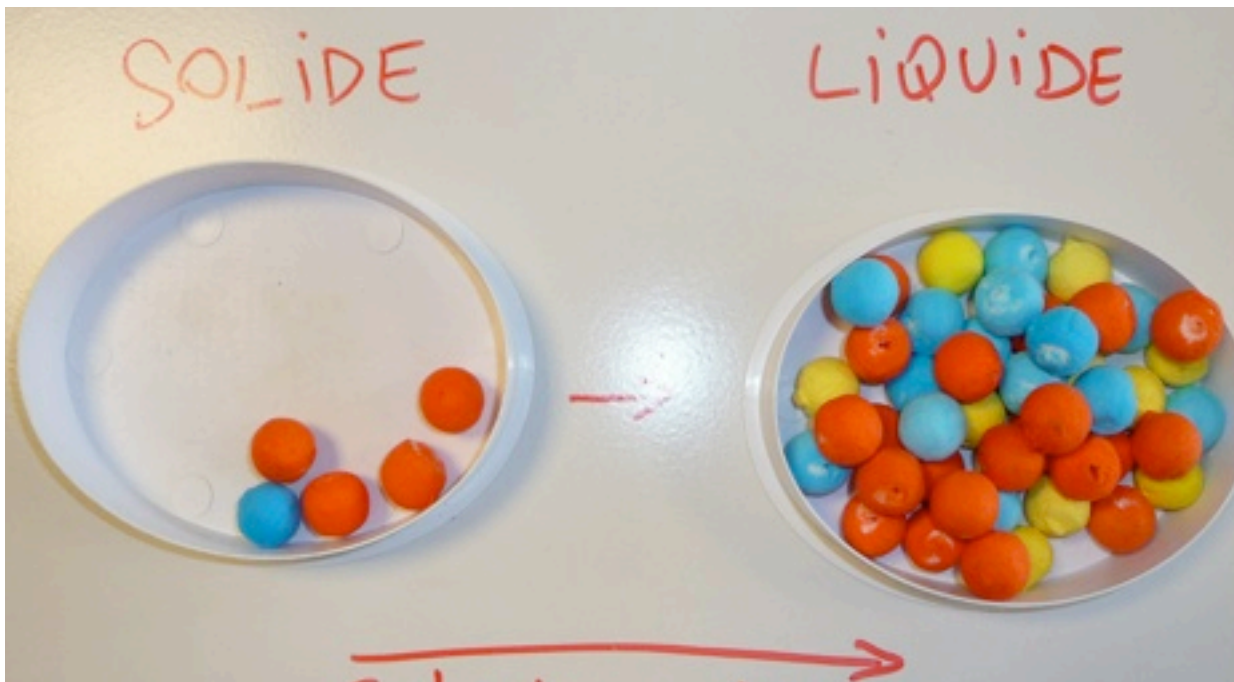


Eutectique binaire
40% An
60% Di

Solide s'appauvrit en An jusqu'à sa disparition

Liquide suivant le cotectique

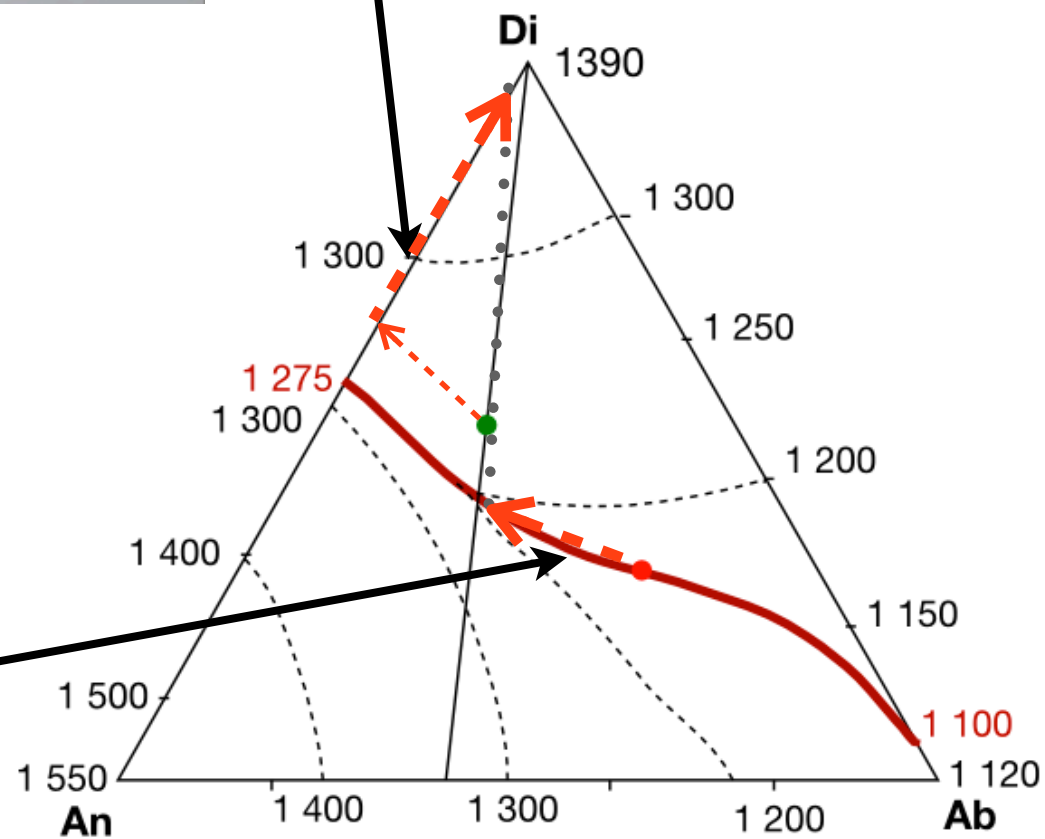


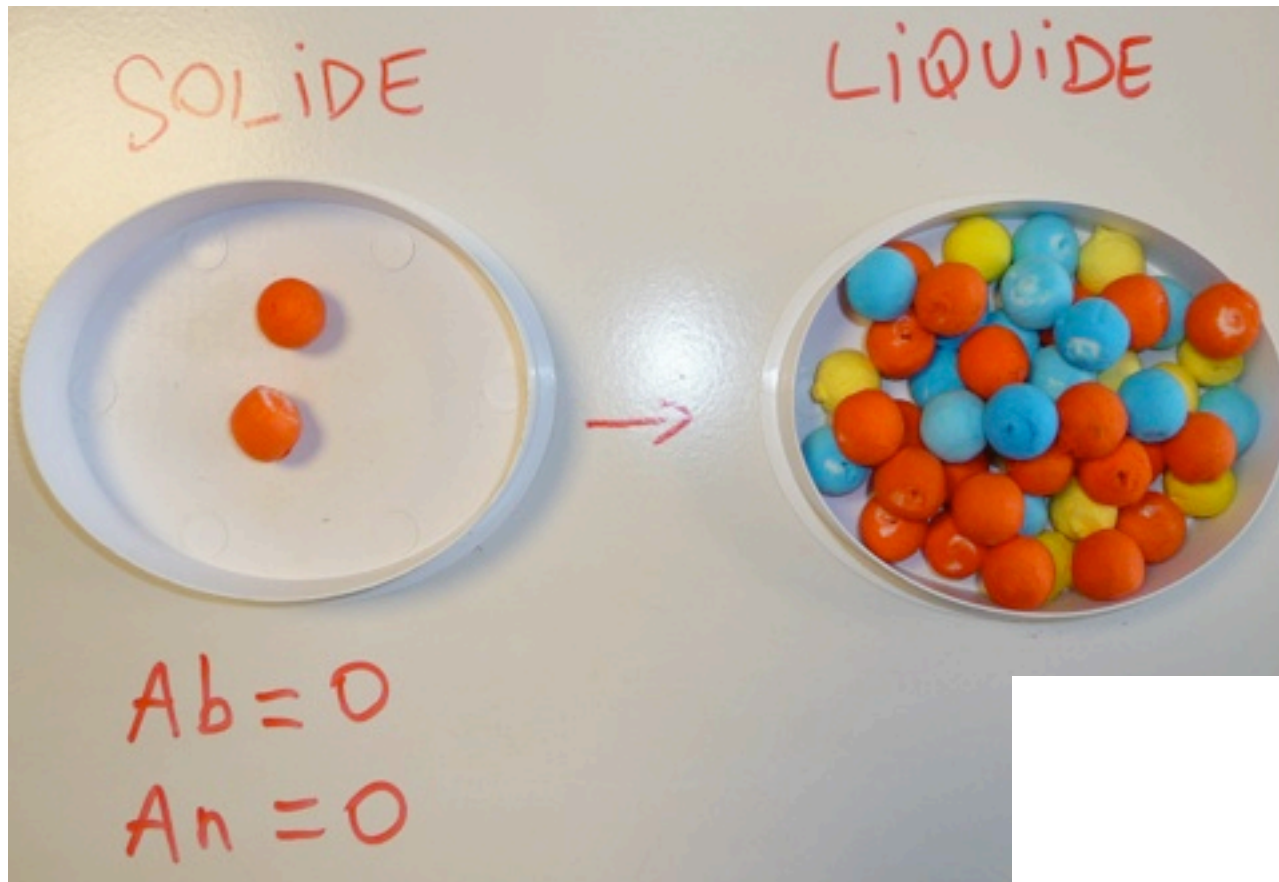


Eutectique binaire
 40% An
 60% Di

Solide s'appauvrit en An jusqu'à sa disparition

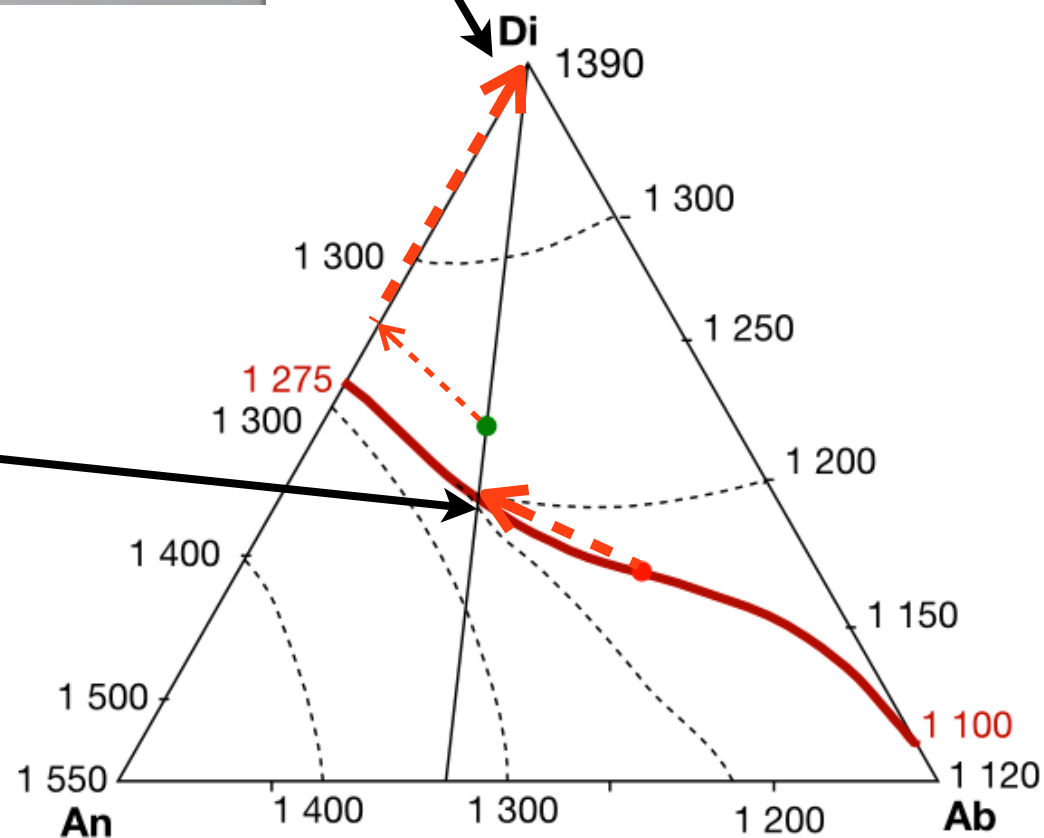
Liquide suivant le cotectique

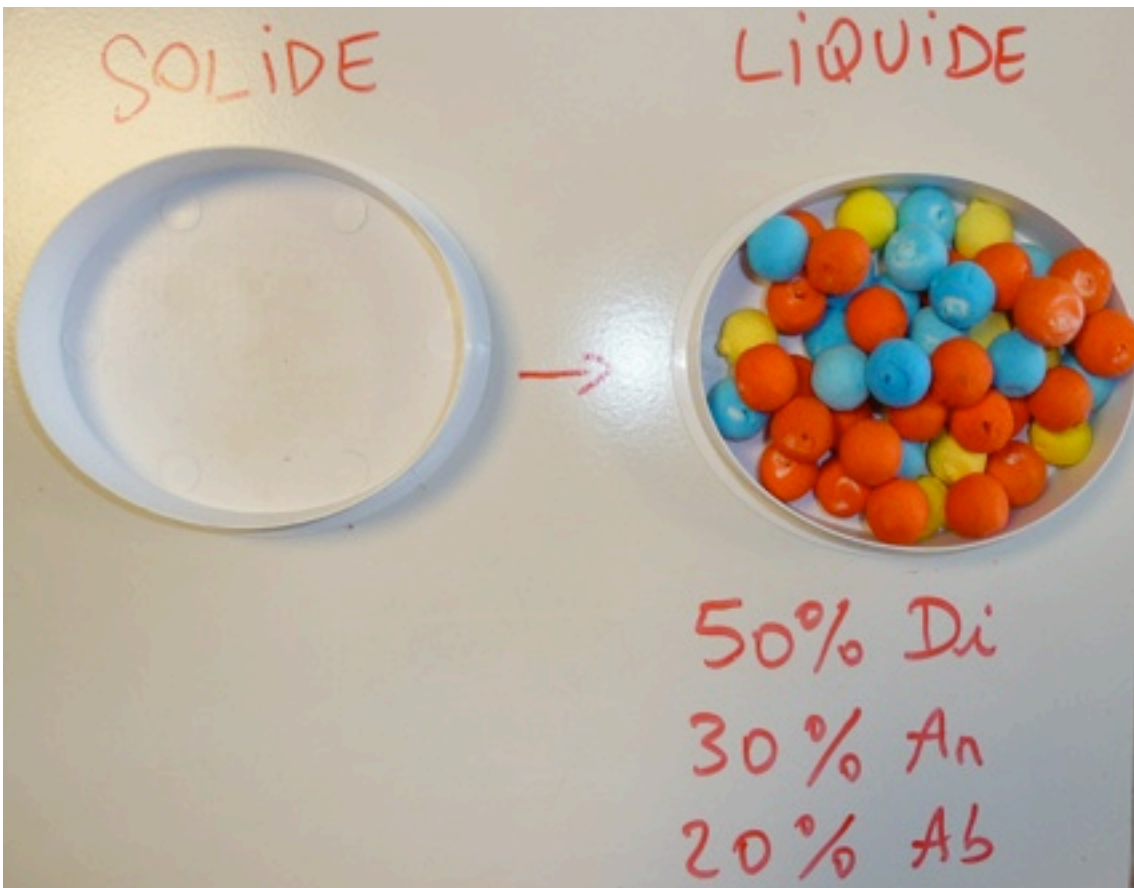




Solide constitué de diopside seul

Liquide





Liquide de même composition que le solide de départ

