

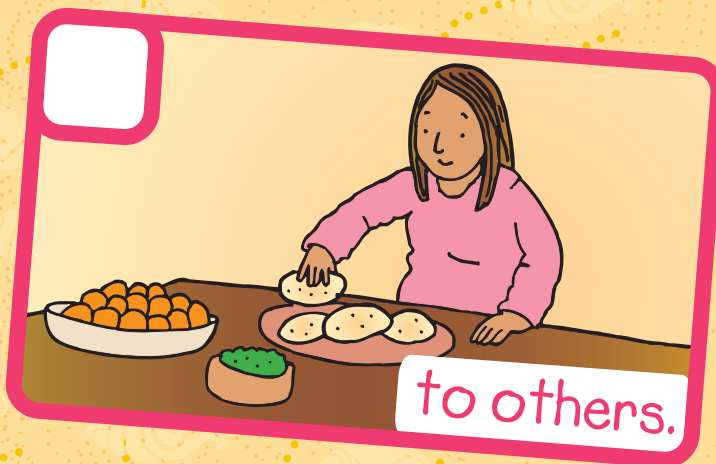
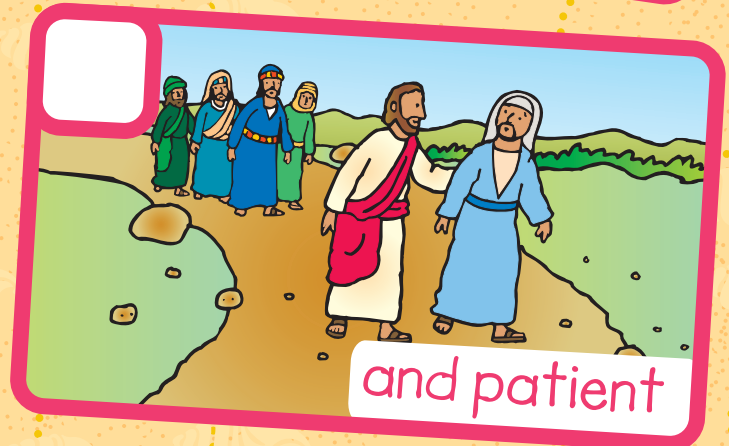
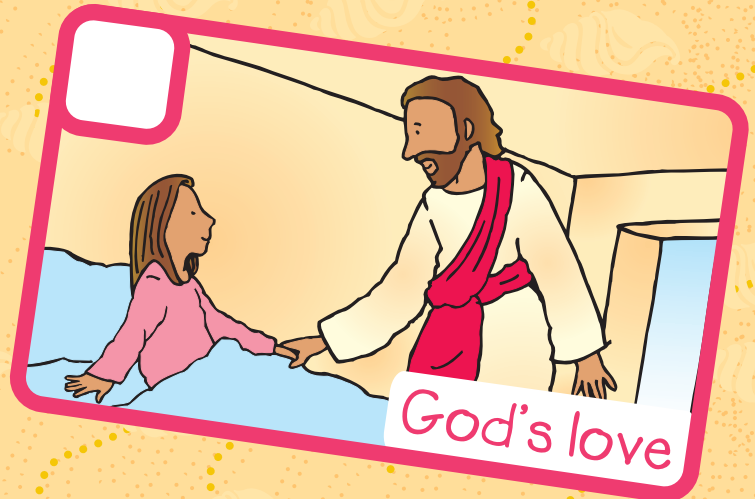


Treasure Guide

Jesus Helps a Young Girl and a Sick Woman

Matthew 9:18-26; Mark 5:21-43; Luke 8:40-56

Number each picture to put the story in the right order. Then read the words from each picture in numbered order to discover a secret message.



Shell Hunt

Draw a line to connect the dots in ABC order.

Color the "Love" shells **RED**.

Color the "Kind" shells **BLUE**.

Color the "Patient" shells **GREEN**.

Bible Memory Verse

"Love is **patient**, love is **kind**.
It does not **envy**."

1 Corinthians 13:4



Kind Find: How many times did you find the word "Kind" written on shells? _____

