



r R  
rr RR



r  
R R



ruche  
ruche

**Je lis des syllabes**

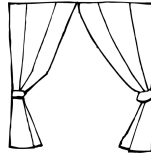
**Je lis des mots**

r	a	➤	ra
---	---	---	----



radio  
radio

r	i	➤	ri
---	---	---	----



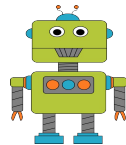
rideau  
rideau

r	u	➤	ru
---	---	---	----



rue  
rue

r	o	➤	ro
---	---	---	----



robot  
robot

a	r	➤	ar
---	---	---	----



arbre  
arbre

u	r	➤	ur
---	---	---	----



mur  
mur