

le son [an] de Maman



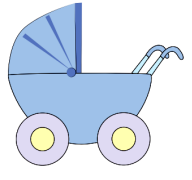
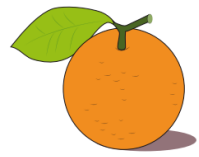
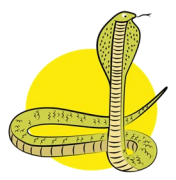
CP

le son [en] de vent



J'écris la syllabe dans laquelle j'entends [an/en]:

⚠ Devant m, b, p, je mets toujours un m.

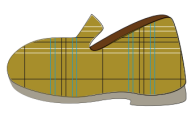
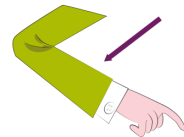
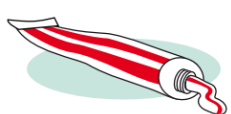


40

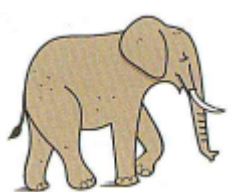
Handwriting practice line with a dot and the word 'pen' written in cursive.



Blank handwriting practice line with a starting dot.



Blank handwriting practice line with a starting dot.



Blank handwriting practice line with a starting dot.

NB: Ce sont les syllabes entendues qui sont demandées. ex : fan pour éléphant.