

SARRA LUD

SA. BATIR
agence Rhône - Alpes
Auvergne

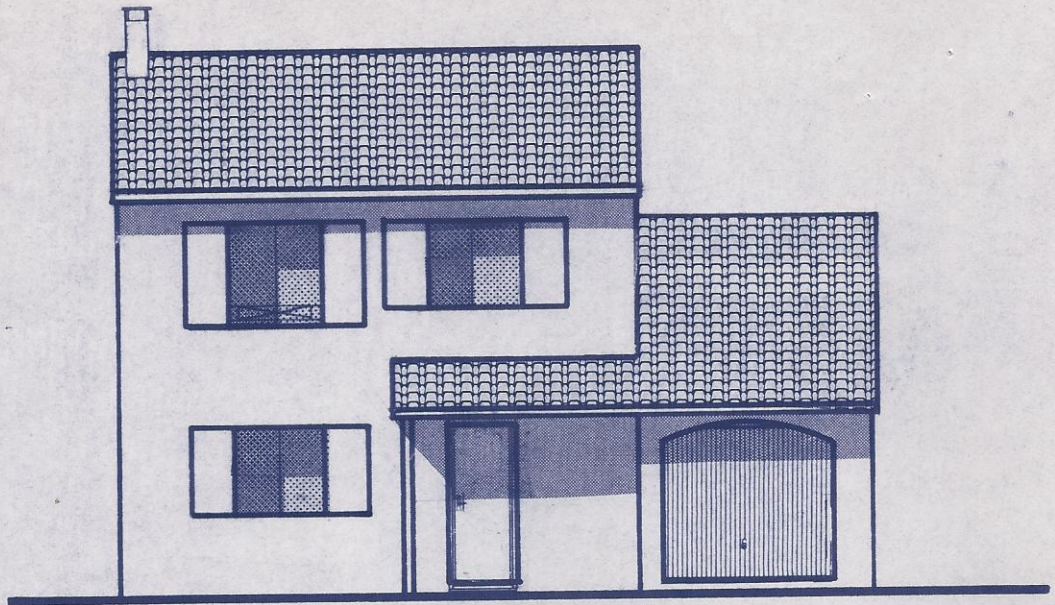


LE DOMAINE DES OLLIÈRES

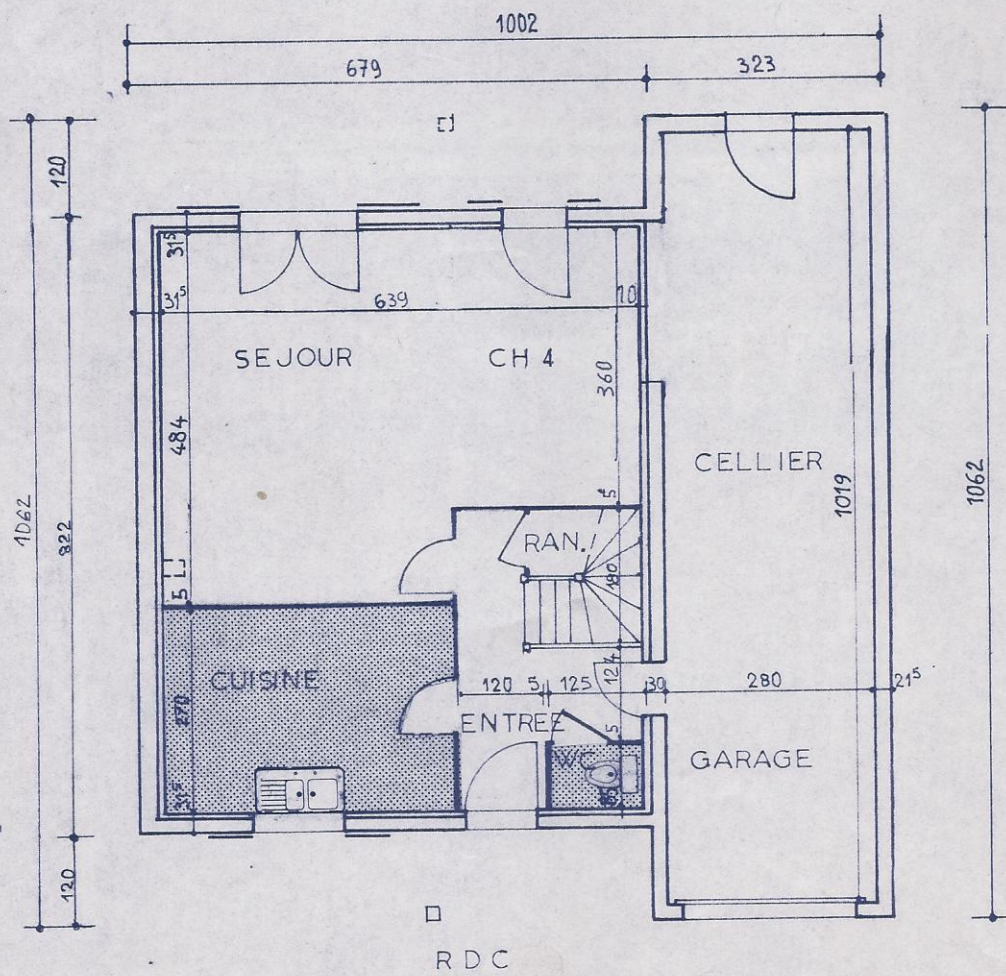
MAISON LUCENA G5

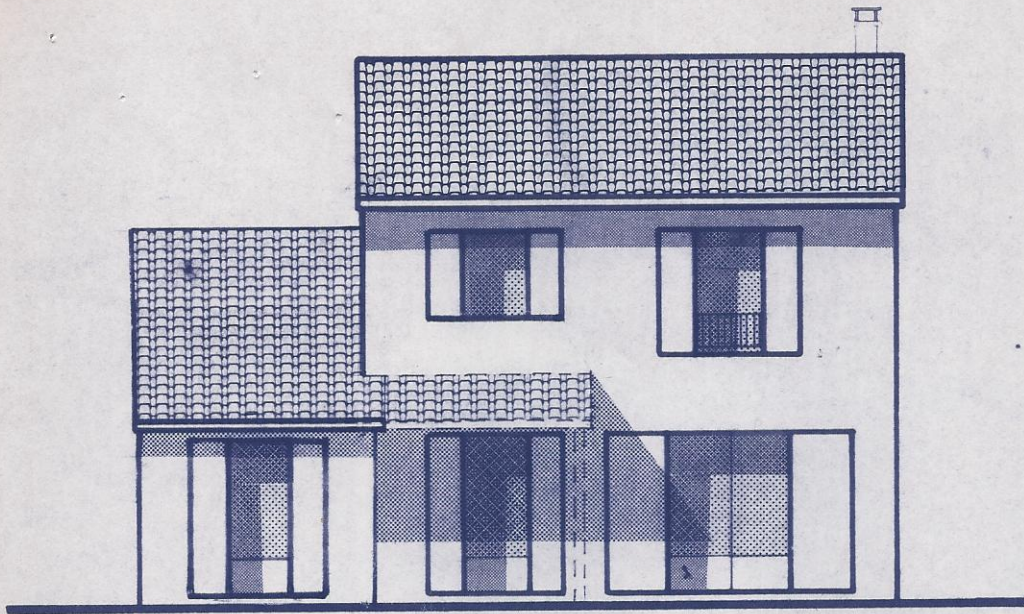
SEPTEMBRE

1983

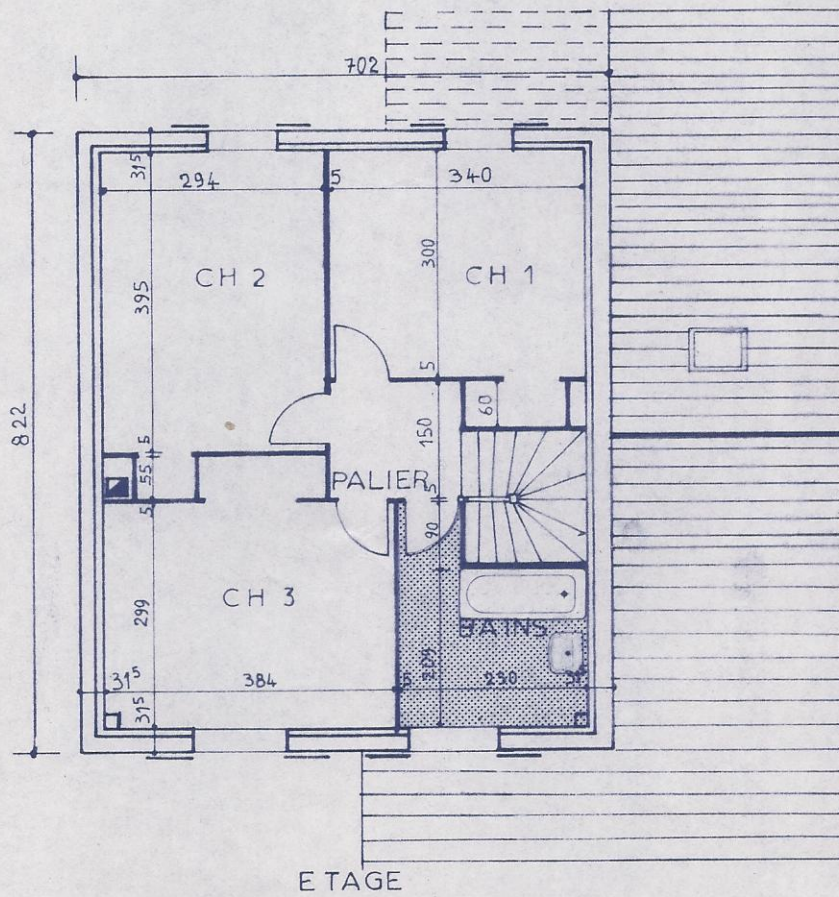


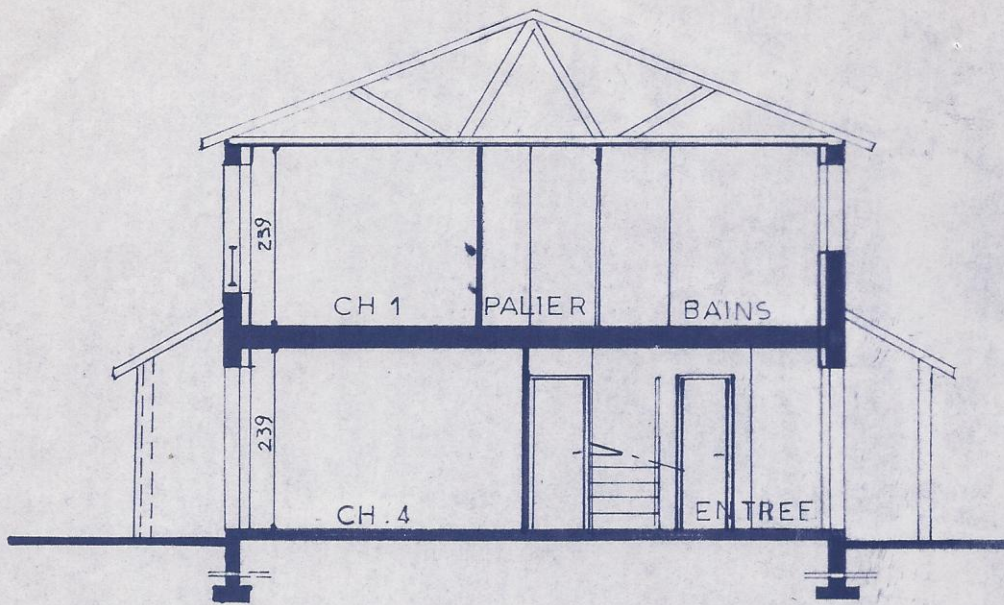
FACADE AVANT





FACADE ARRIERE





COUPE

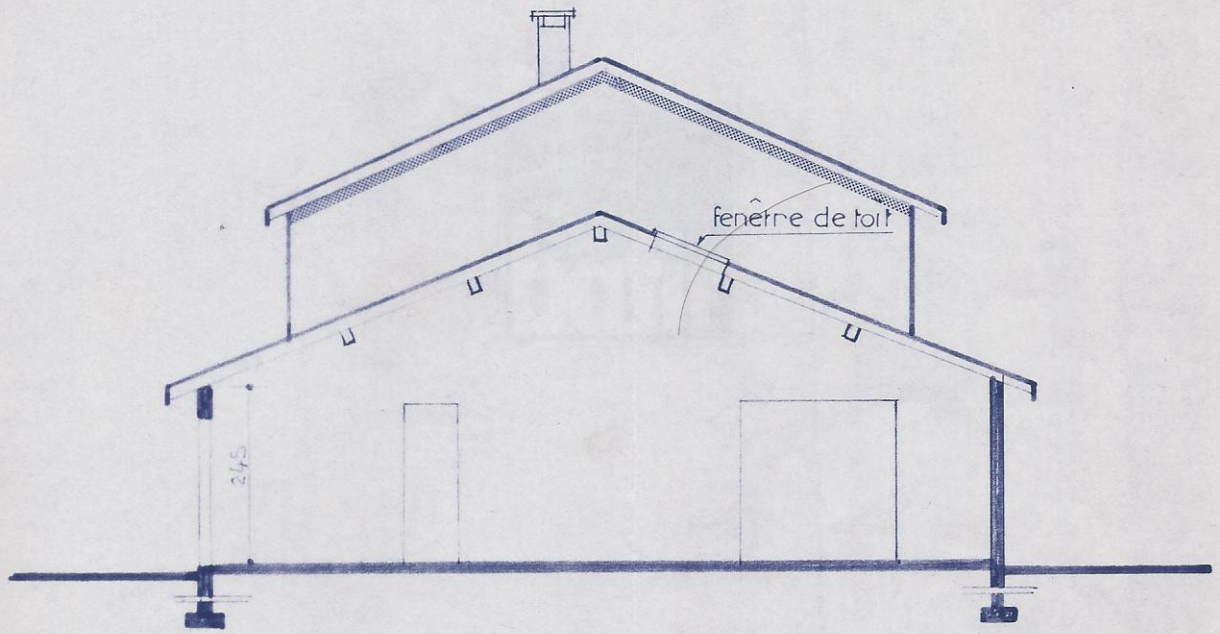
SEJOUR - CH. 4	27,47 m ²
CUISINE	9,72 m ²
ENTREE	6,75 m ²
WC	1,06 m ²
RANGEMENT ENTREE	0,77 m ²
CHAMBRE 1	10,20 m ²
CHAMBRE 2	11,81 m ²
CHAMBRE 3	11,44 m ²
BAINS	5,97 m ²
PALIER	2,70 m ²
PLACARDS	2,73 m ²

SURFACE HABITABLE 89,92 m²

GARAGE - CELLIER 28,53 m²

SURFACE TOTALE : 118,45 m²

- SURFACES -

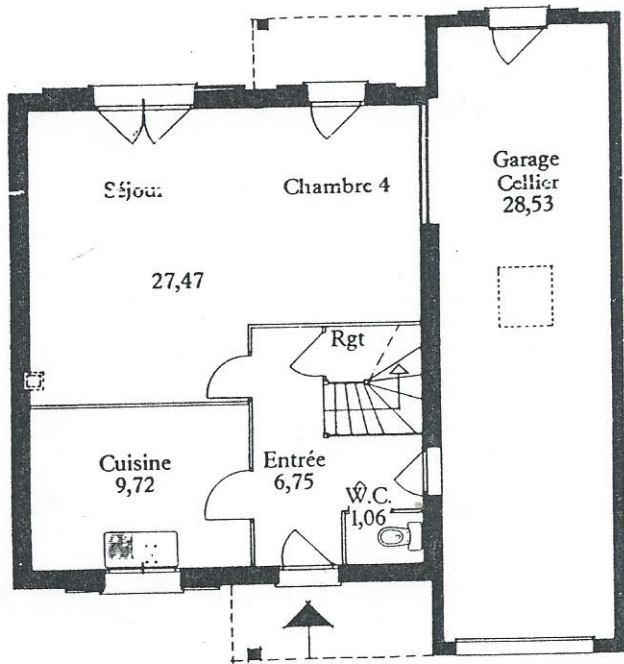
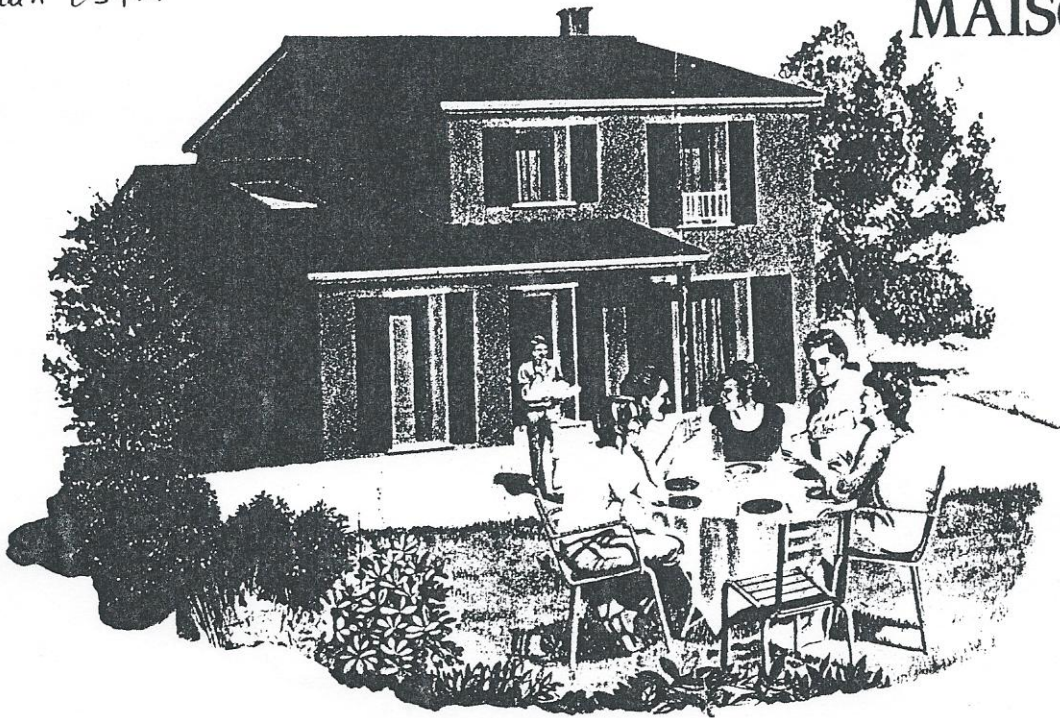


COUPE SUR GARAGE

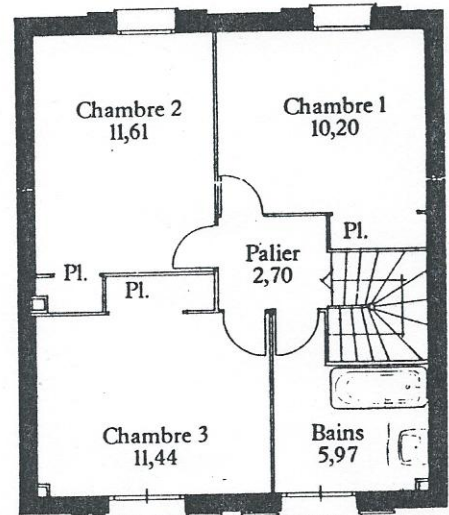
MAISON LUCRENA 127

terrain 297m².

MAISON LUCENA G3



Rez-de-Chaussée



Étage

Surface habitable 89,92 m²
Surface garage-cellar 28,53 m²

"Suivant parcelles, certaines fenêtres ou portes sont transférées en pignon des maisons."

Porche arrière en option.

LE DOMAINE DES OLLIÈRES