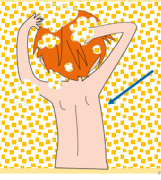
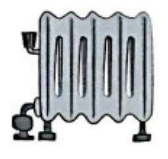


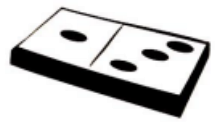
le son [d] de dos



J'écris la syllabe dans laquelle j'entends [d]:



Handwriting practice line with a dot and the syllable 'di' written in cursive on the first grid.



Handwriting practice line with a dot on the first grid.



Handwriting practice line with a dot on the first grid.



Handwriting practice line with a dot on the first grid.

NB: Ce sont les syllabes entendues qui sont demandées, ex: di pour dromadaire, do pour radeau.