



é É e È



le blé

le blé

le blé				



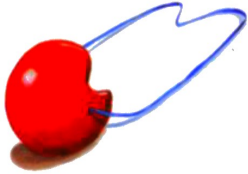
le nez

ez ez

er er



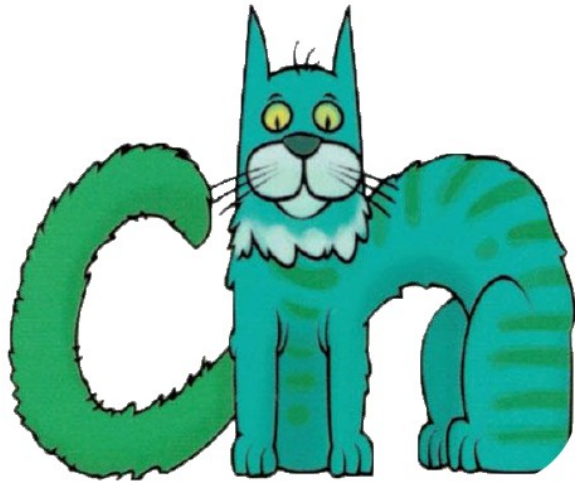
le potager



le nez



le potager

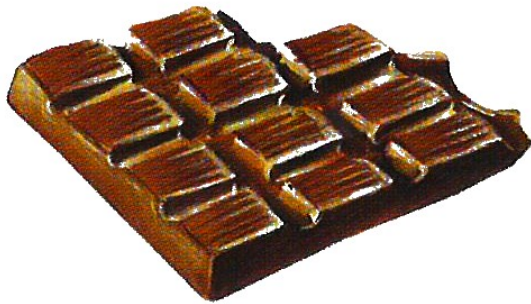


ch ch

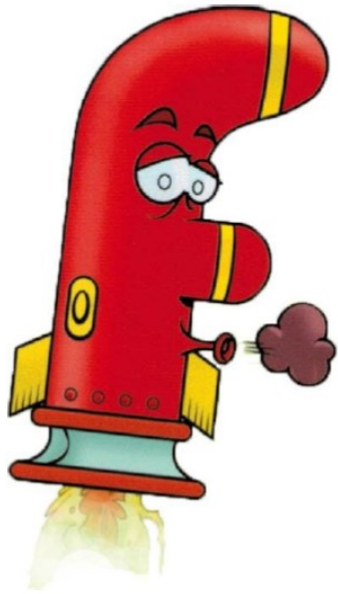
CH Ch



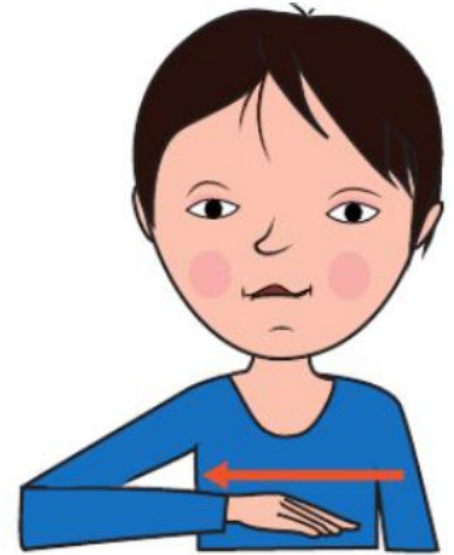
du chocolat



du chocolat



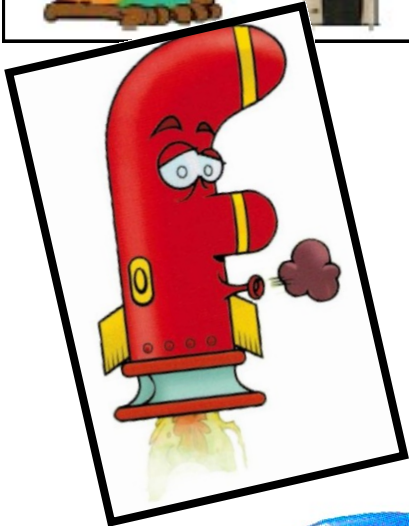
f F f F



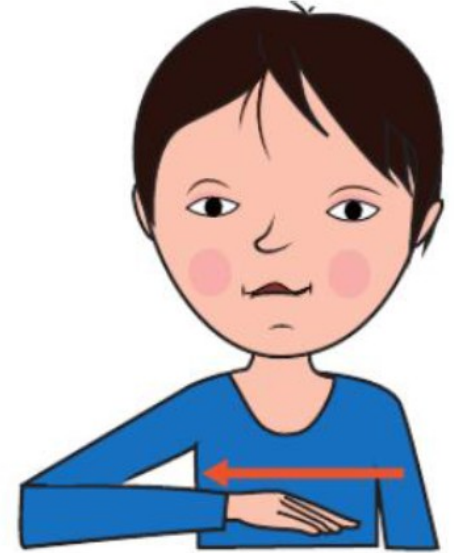
la farine



la farine



ph ph



le téléphone

le téléphone



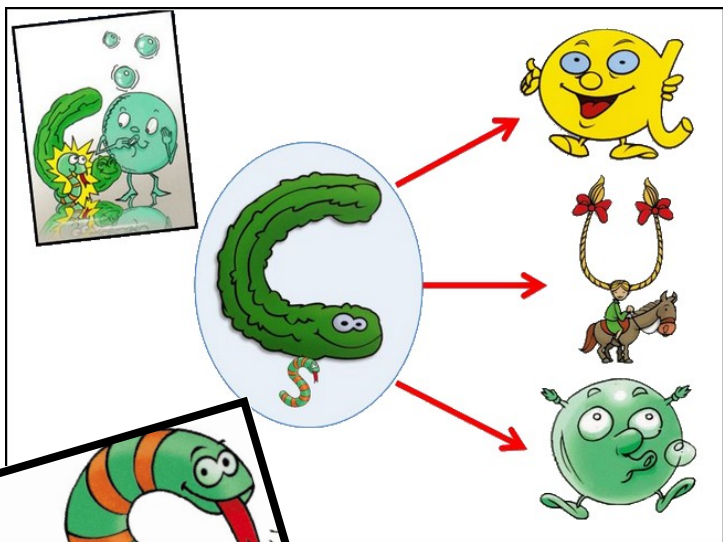
s S s S



du s savon



du	s	sa	von				



Ç a ç a

Ç u ç u

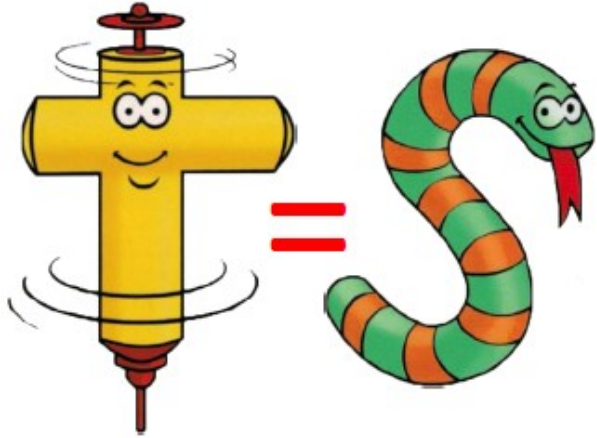
Ç o ç o



le glaçon



le glaçon



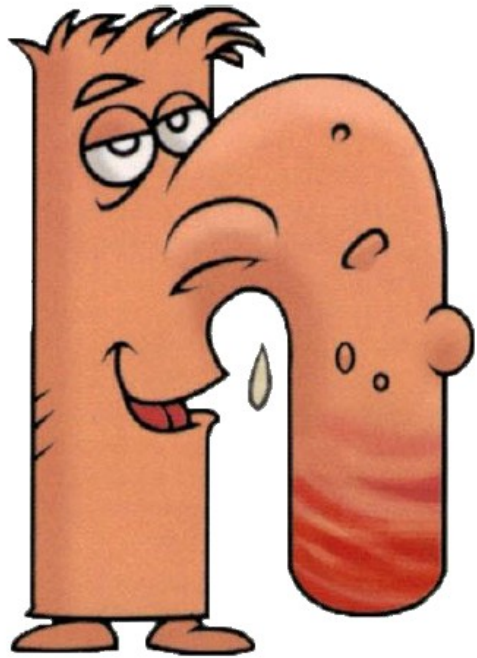
tion = sion

tion = sion

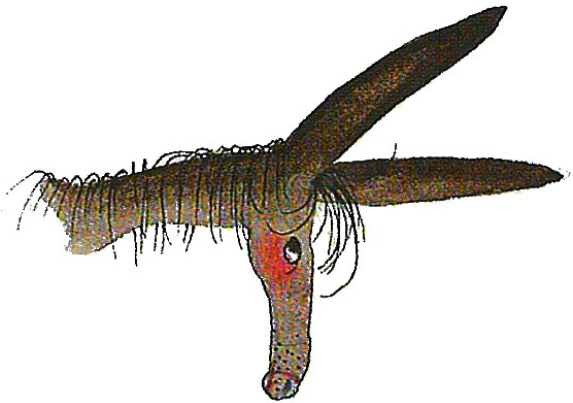


une habitation

une habitation

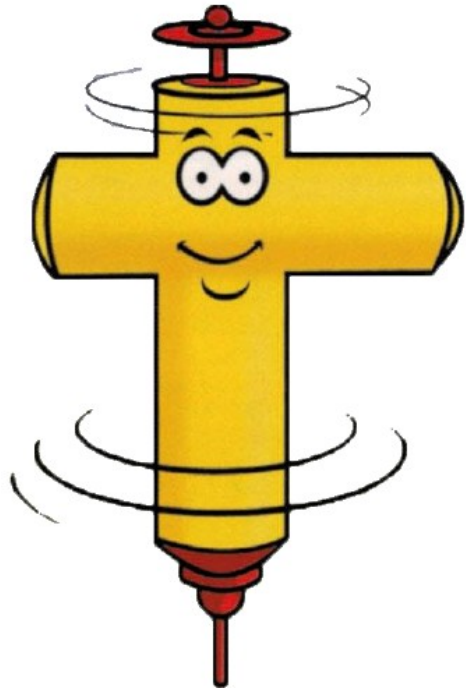


n N n N

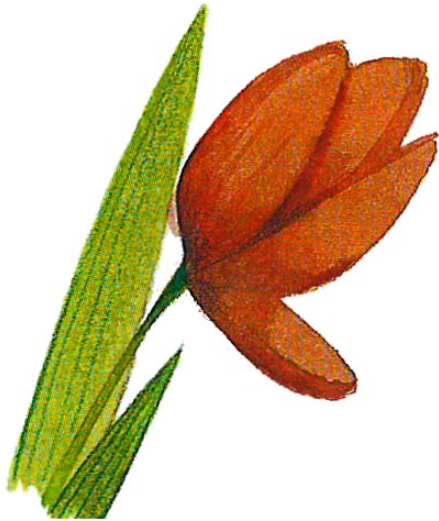


un âne

un	â	ne				
un	â	ne				



t T t t



une tulipe

une tulipe



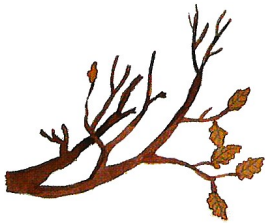
en en

an an



une branche

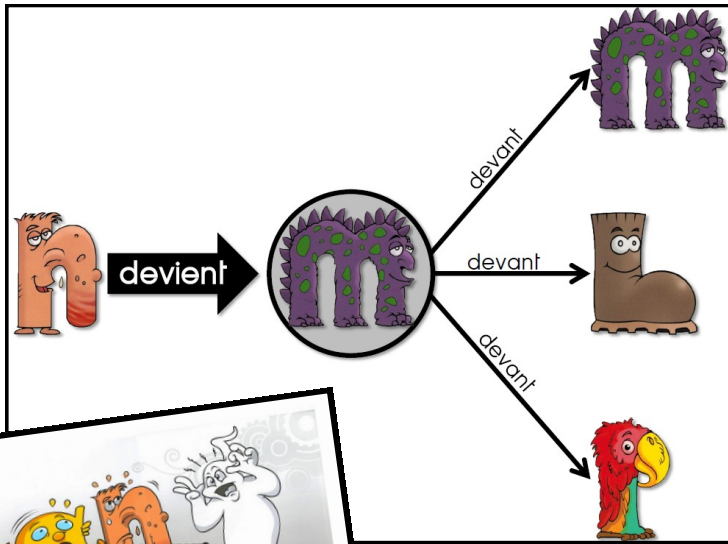
le vent



une branche



le vent



am am

em em



le champ



le champ



la tempête

la tempête



è

er

ê

er



la mèche

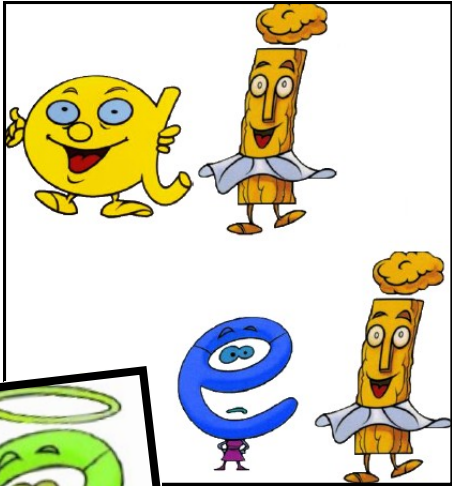
la tête



la mèche



la tête



ai ai

ei ei

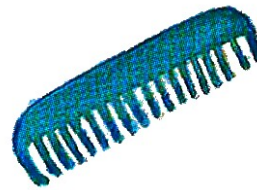


le lait

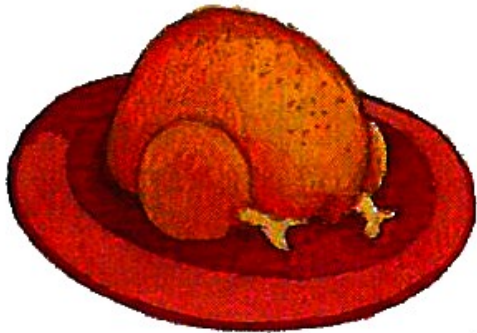
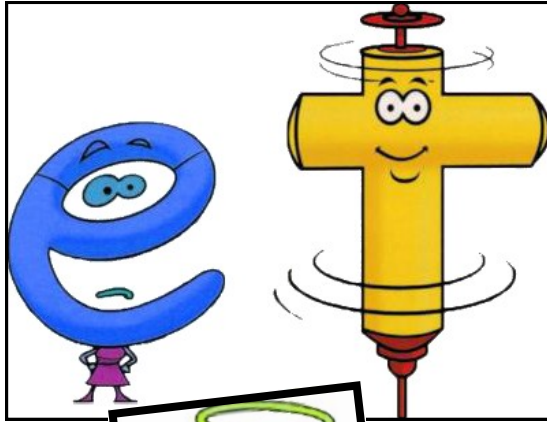


le lait

le peigne



le peigne

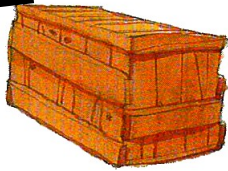
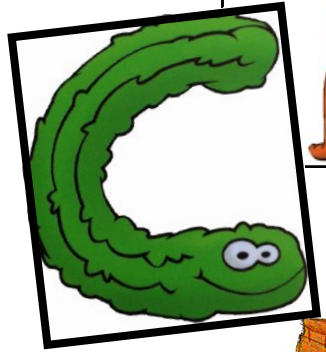
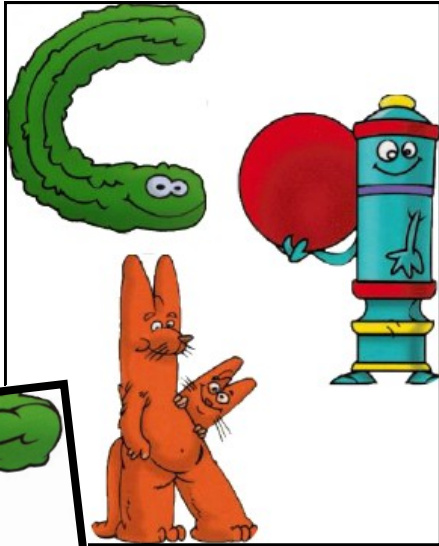


et et



le poulet

le poulet



c

c

k

k

qu

qu



la **c**aisse

le **k**épi

quatre

la **c**aisse

le **k**épi

quatre