

Le diagramme binaire avec eutectique en fête

SOLIDE



60% An
(violet)

40% Di
(jaune)

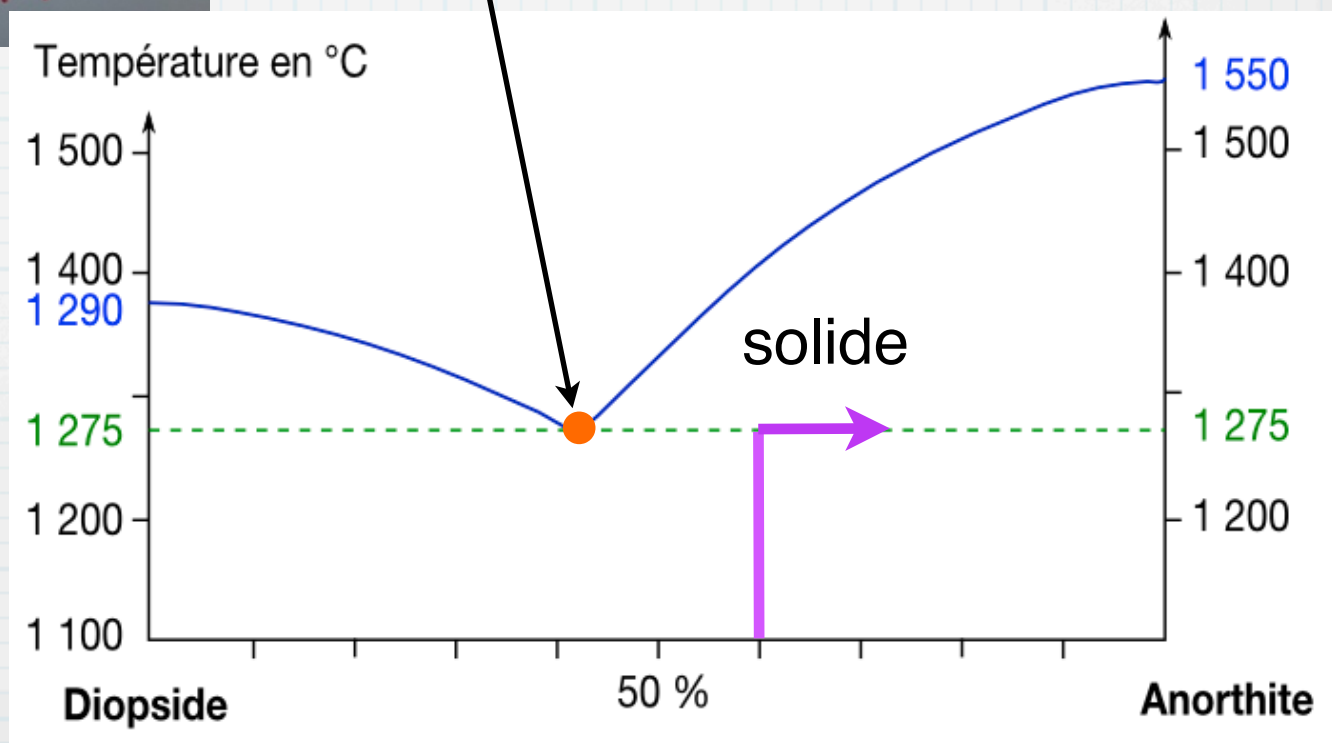
SOLIDE
RESIDUEL

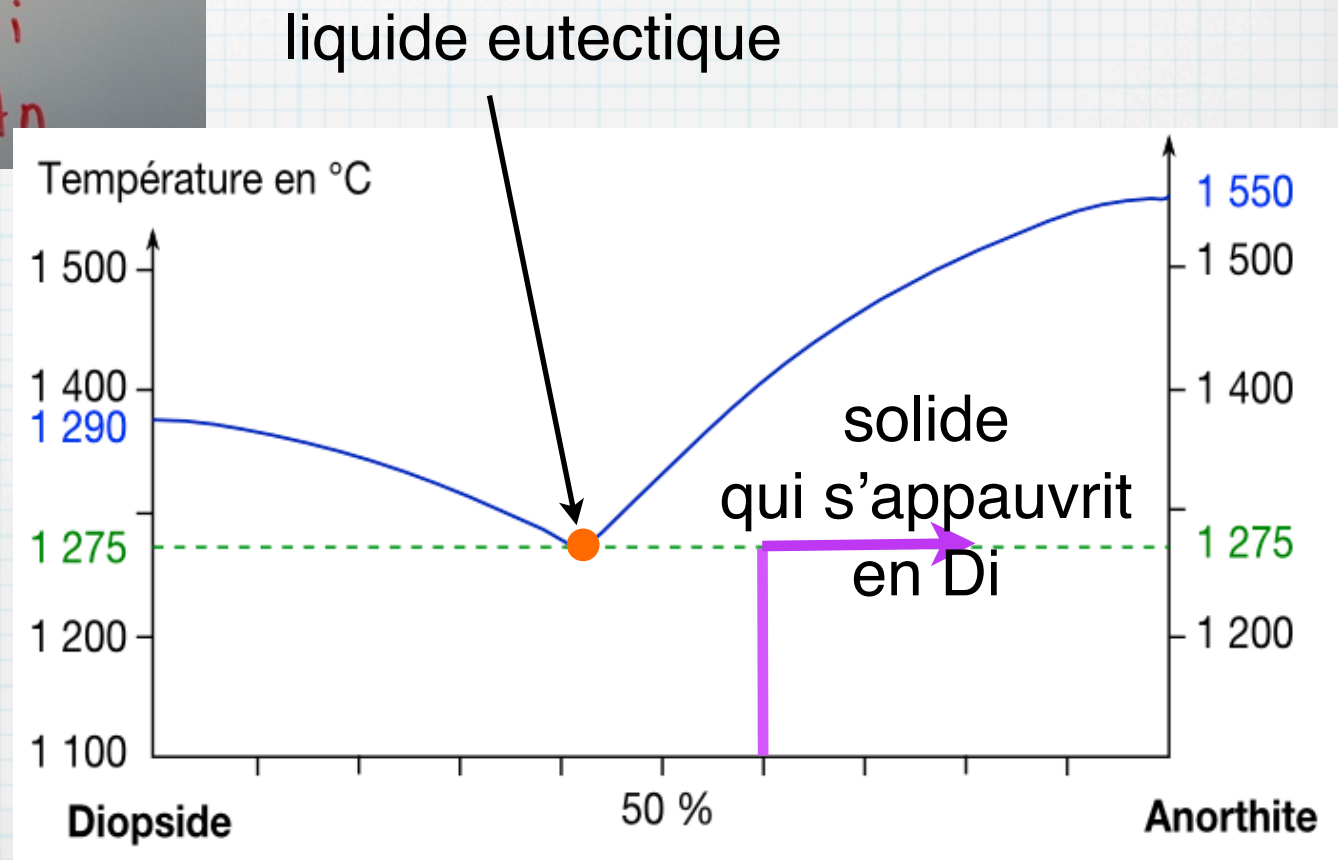
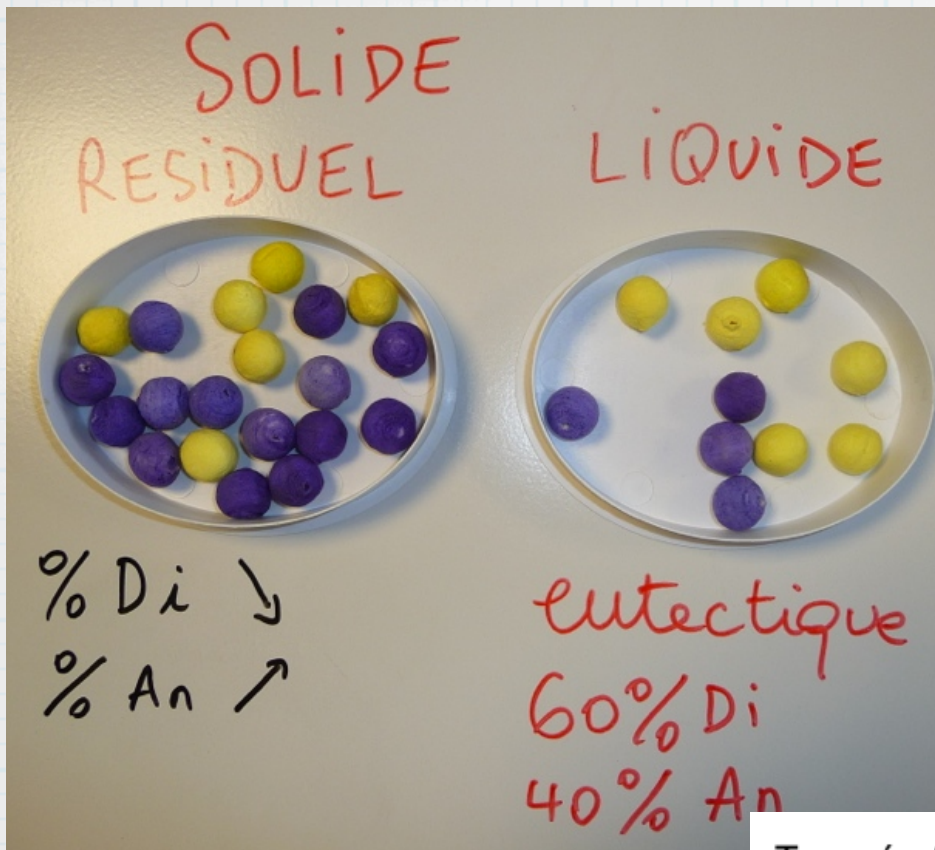
LIQUIDE



eutectique
60% Di
40% An

liquide eutectique





SOLIDE
RESIDUEL

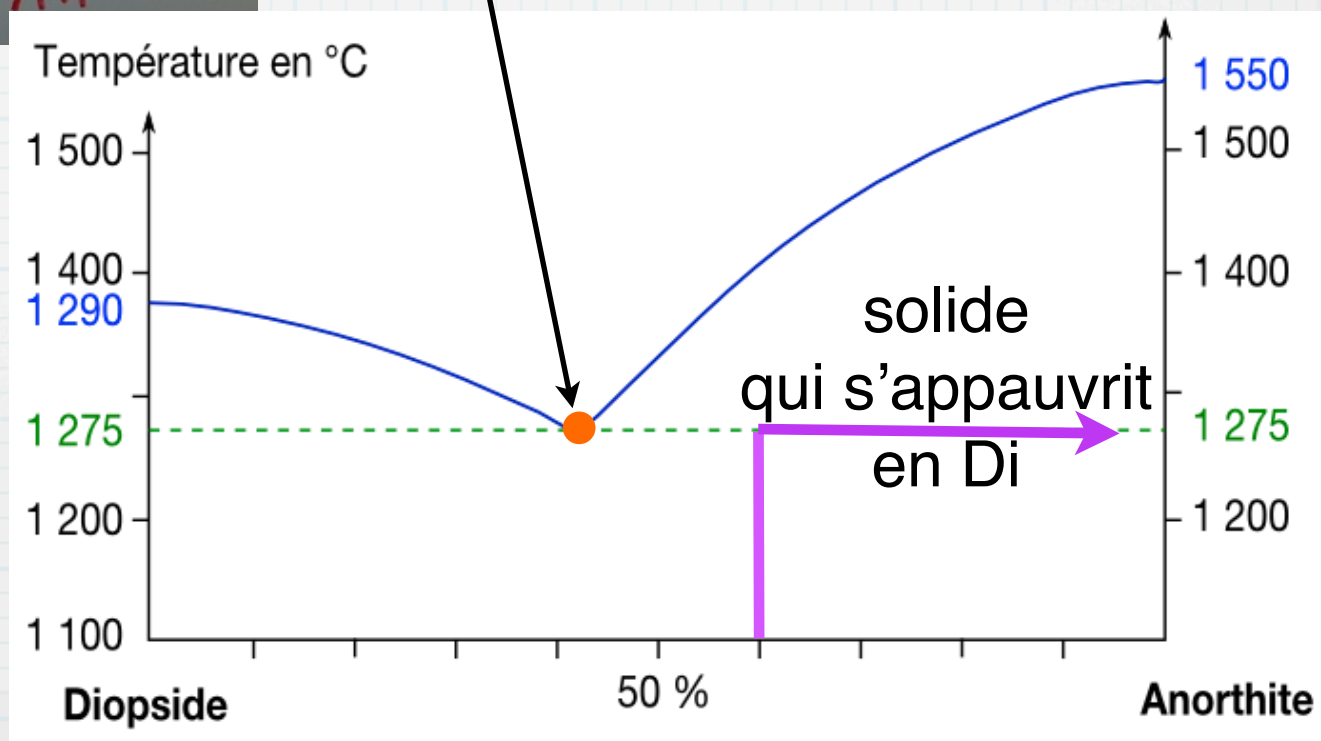
LIQUIDE



% Di ↘
% An ↗

eutectique
60% Di
40% An

liquide eutectique



SOLIDE
RESIDUEL



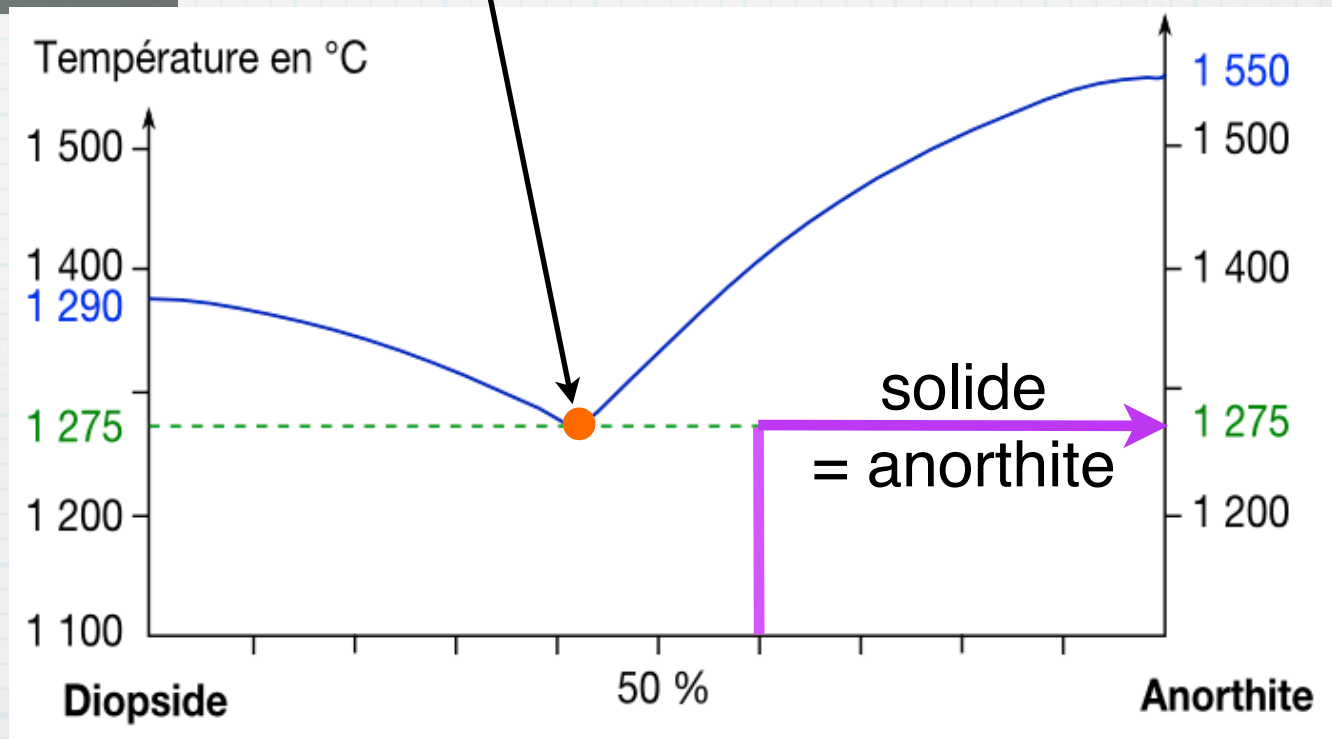
100% An

LIQUIDE



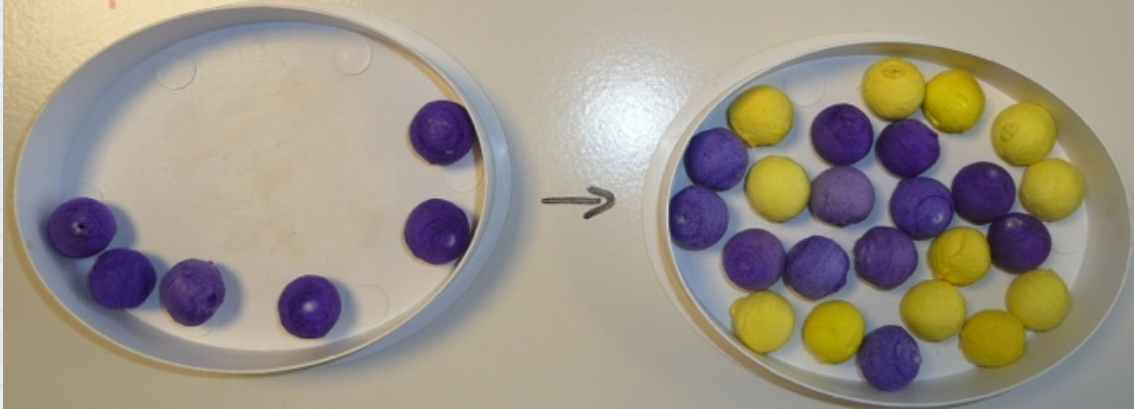
eutectique
60% Di
40% An

liquide eutectique



SOLIDE
RESIDUEL

LIQUIDE

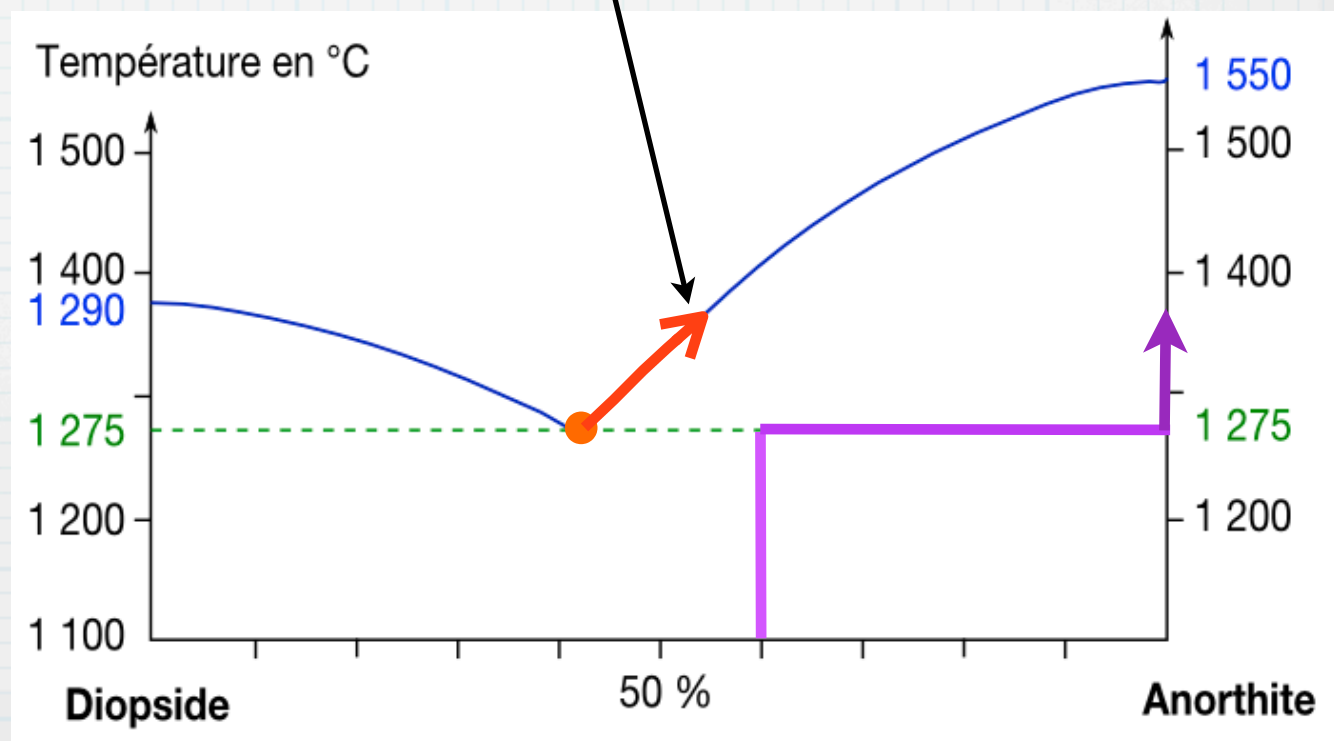


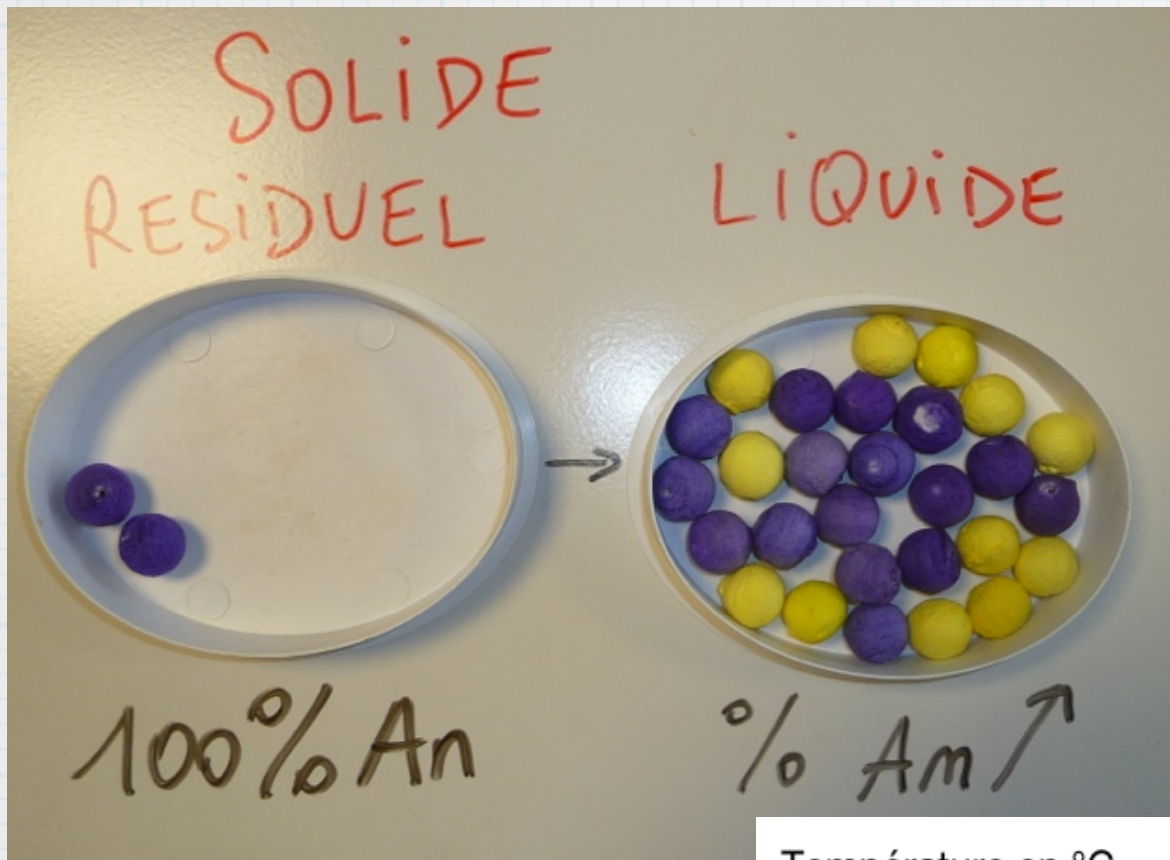
100% An

% Am ↑

liquide qui
s'enrichit en
anorthite

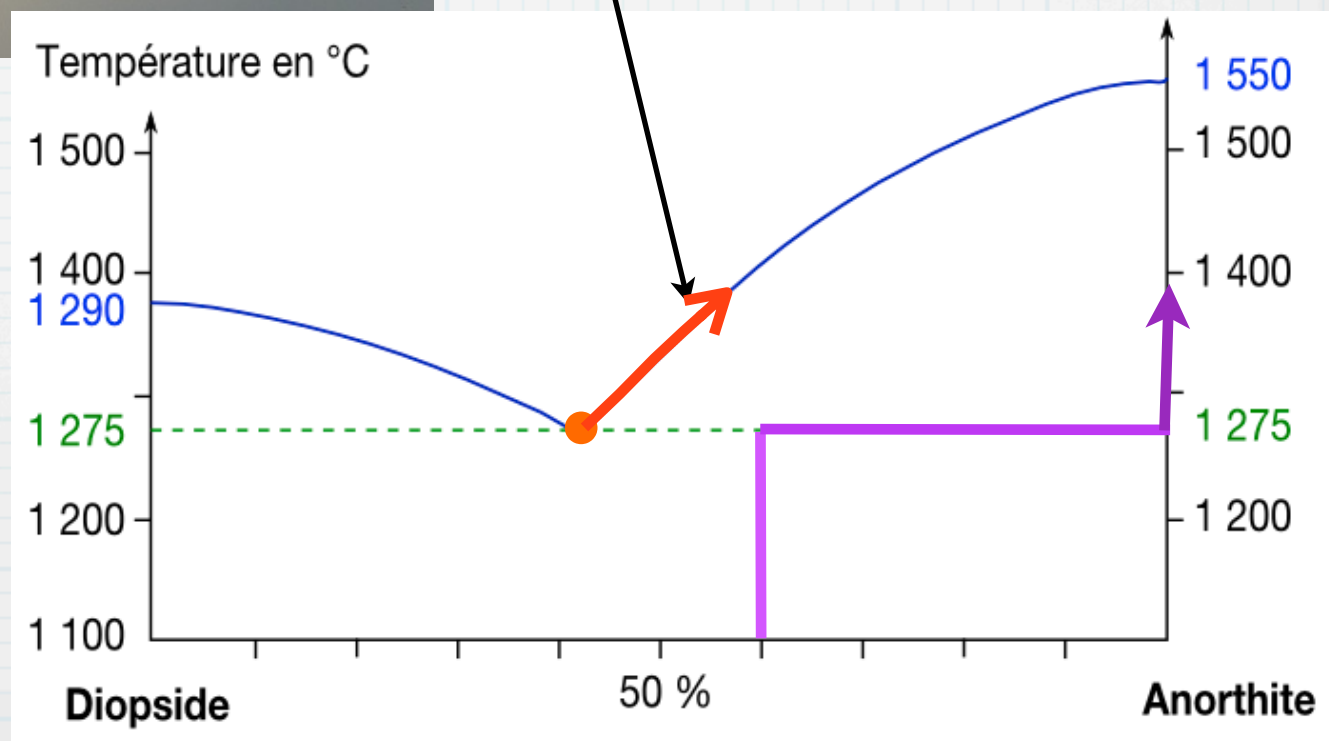
solide
= anorthite





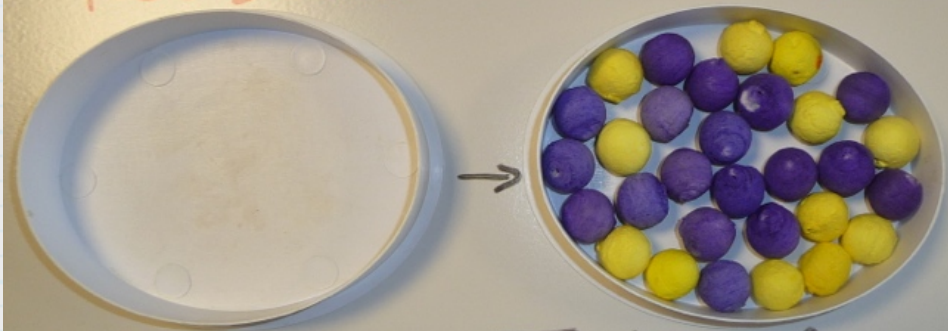
liquide qui
s'enrichit en
anorthite

solide
= anorthite



SOLIDE
RESIDUEL

LIQUIDE



Tout a fondu
60% An
40% Di

liquide de la
composition du
solide initial

plus de solide

