

Les sons proches



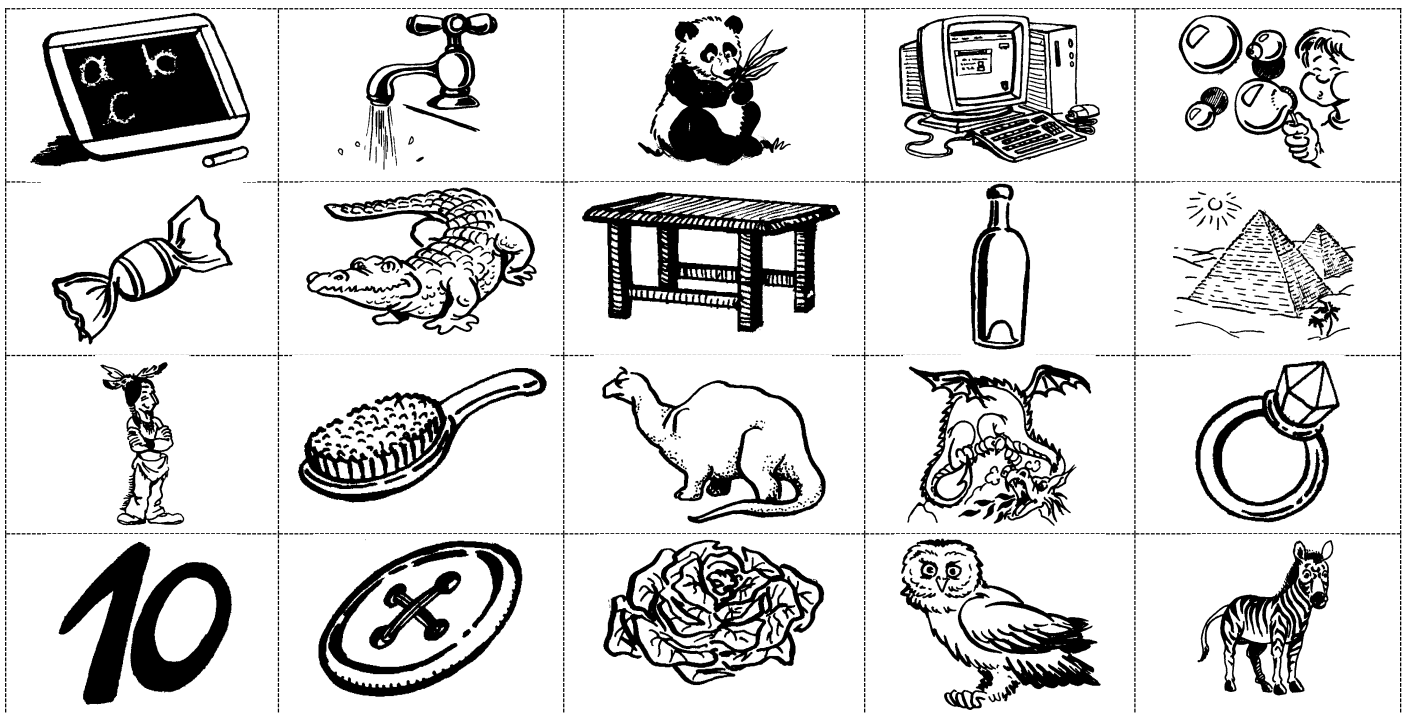
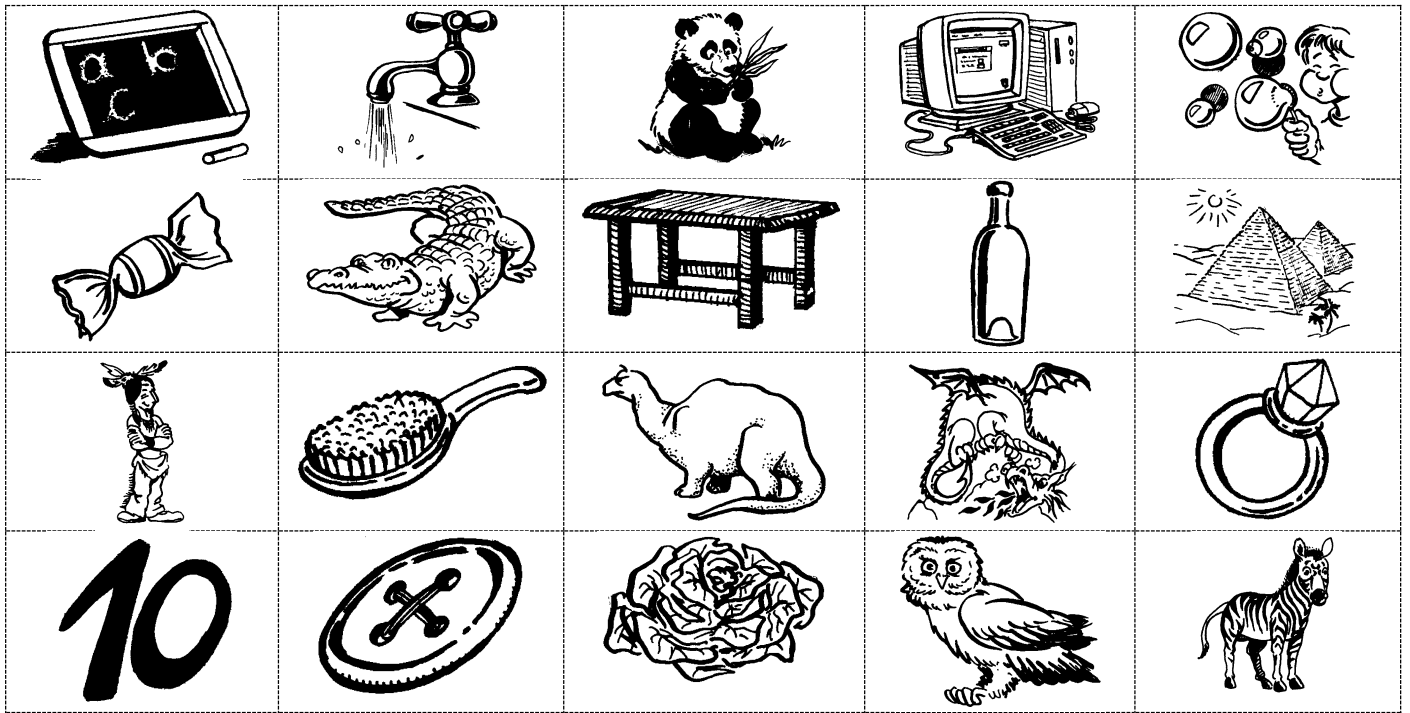
Date :

Prénom :

b et d

 Découpe chaque image et  colle l'image dans la case correspondante.





Les sons proches



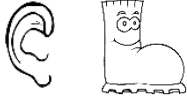
Date :

Prénom :

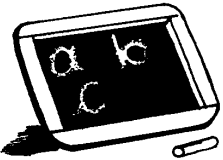
b et d



Ecris le numéro de chaque image dans la bonne colonne :



1



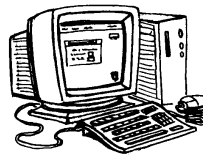
2



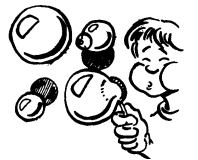
3



4



5



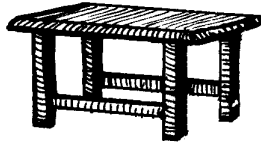
6



7



8



9



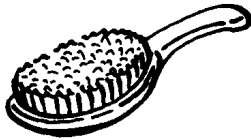
10



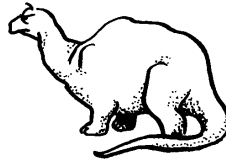
11



12



13



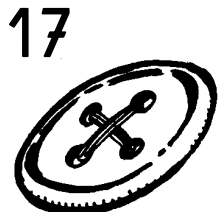
14



15



16



17



18

19



20



Les sons proches

b et d

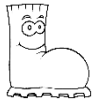


Date :

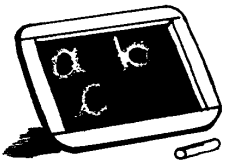
Prénom :



Ecris le numéro de chaque image dans la bonne colonne :



1



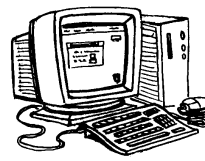
2



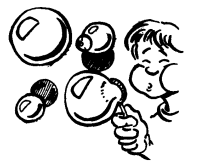
3



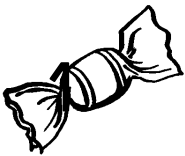
4



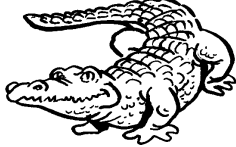
5



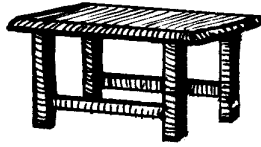
6



7



8



9



10



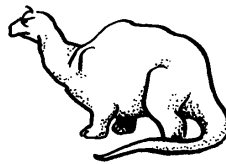
11



12



13



14



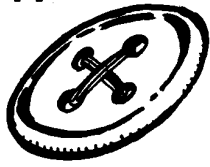
15



16

10

17



18



19



20



Les sons proches

Date :

Prénom :

b et d



Ecris le numéro de chaque image dans la bonne colonne :



Empty box for writing numbers corresponding to the 'b' column.

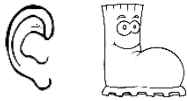
Empty box for writing numbers corresponding to the 'd' column.

1 	2 	3 	4 	5
6 	7 	8 	9 	10
11 	12 	13 	14 	15
16 10	17 	18 	19 	20

Les sons proches

Correction

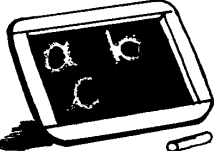



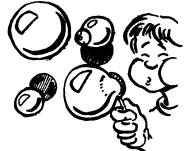
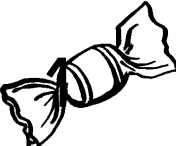
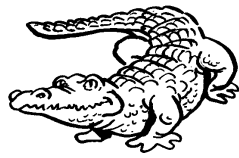
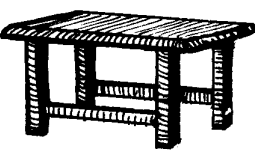

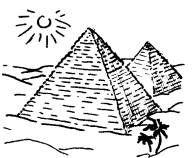

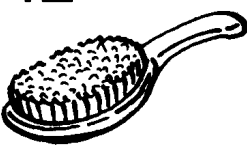






b et d



2 - 5 - 6 - 8 - 9 - 12
- 15 - 17 - 19 - 20



1 - 3 - 4 - 7 - 10 -
11 - 13 - 14 - 16 -
18

1 	2 	3 	4 	5 
6 	7 	8 	9 	10 
11 	12 	13 	14 	15 
16 10	17 	18 	19 	20 