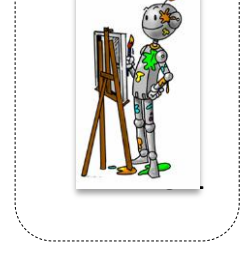
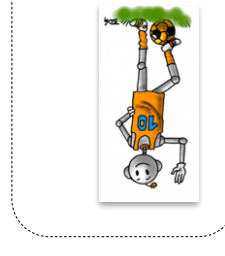
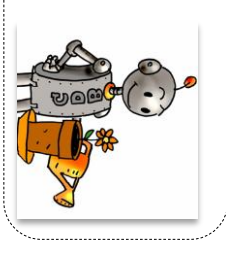
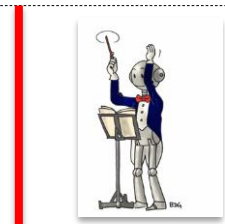
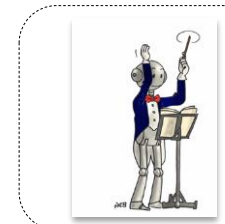
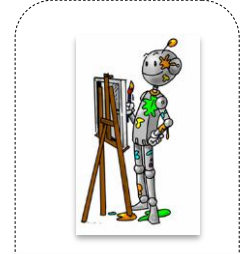
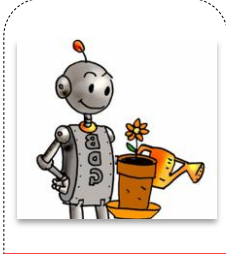
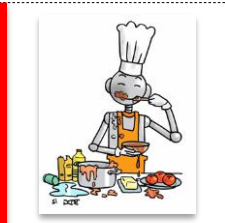
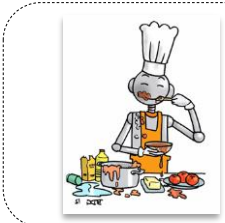
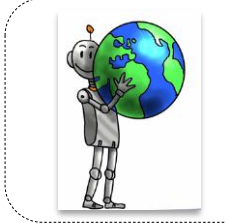
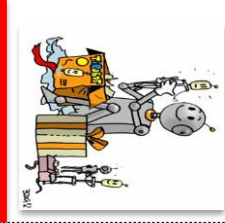
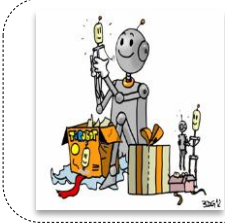
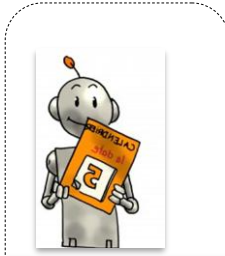
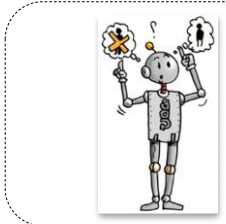
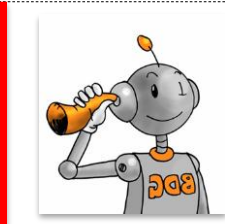
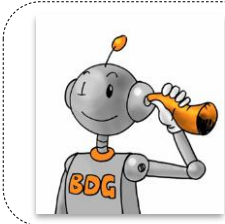
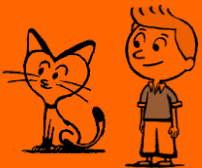


# Géométrie

## La symétrie

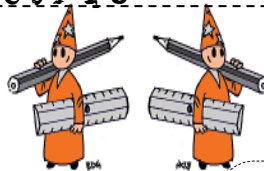
1 Entoure les paires qui sont symétriques.



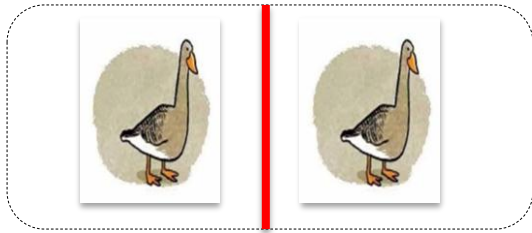
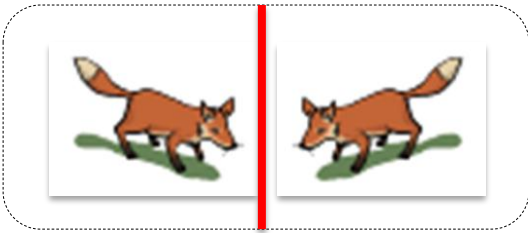
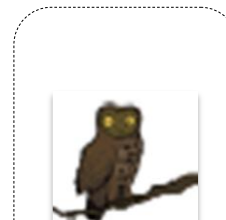
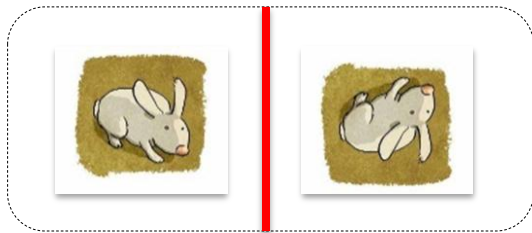
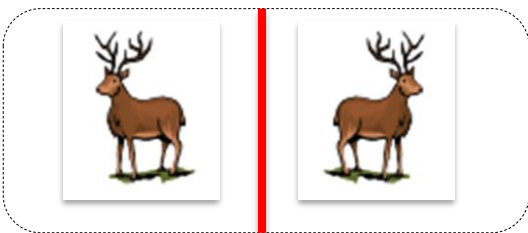
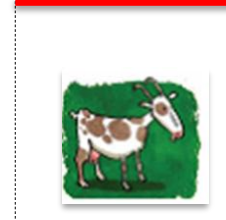
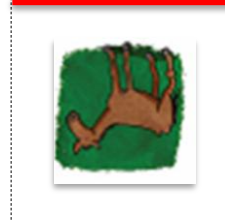
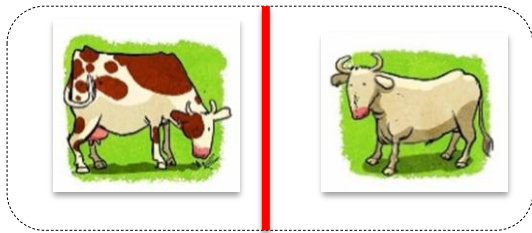
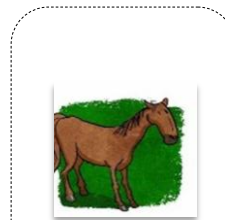
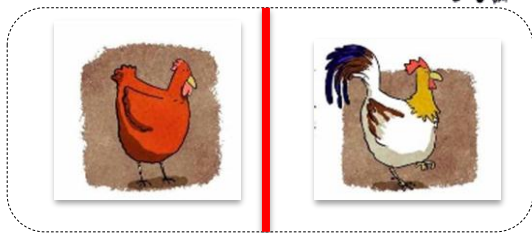
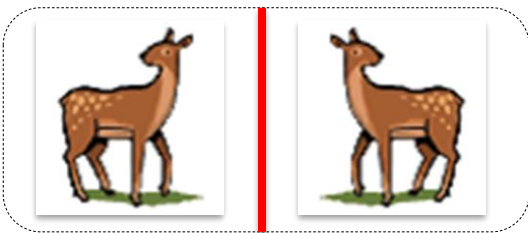


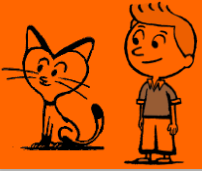
# Géométrie

## La symétrie



1 Entoure les paires qui sont symétriques.

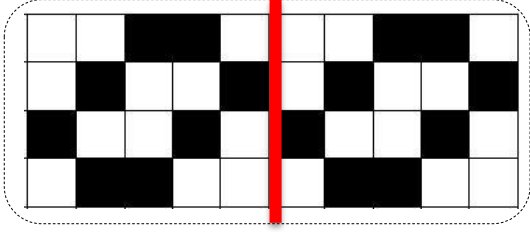
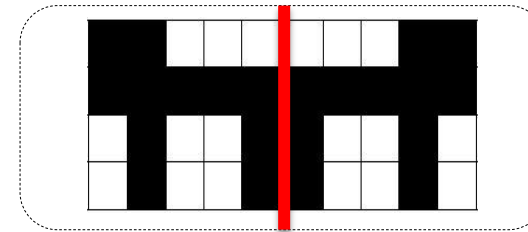
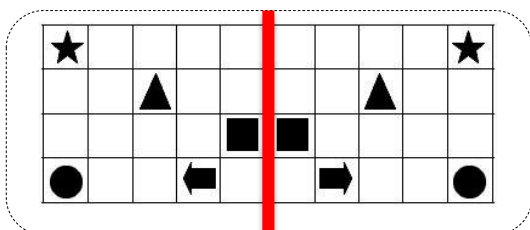
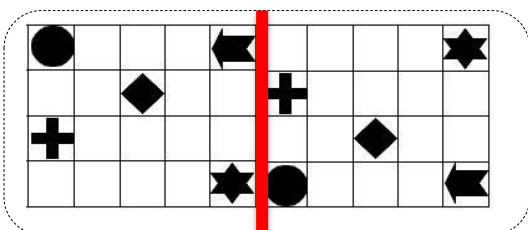
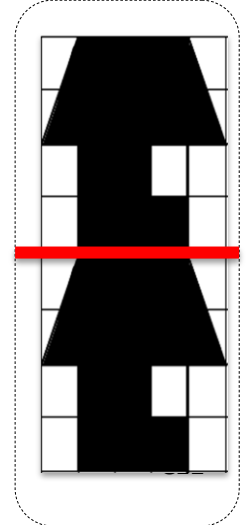
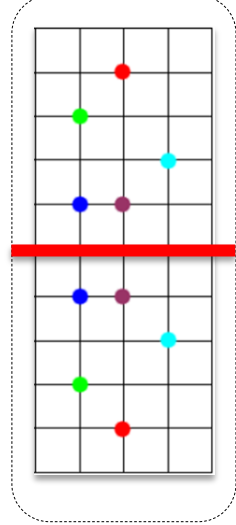
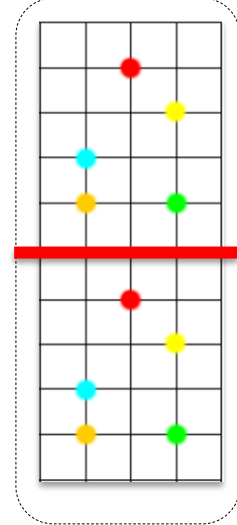
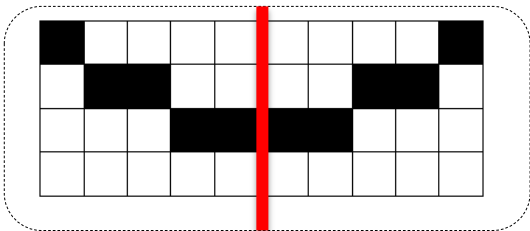
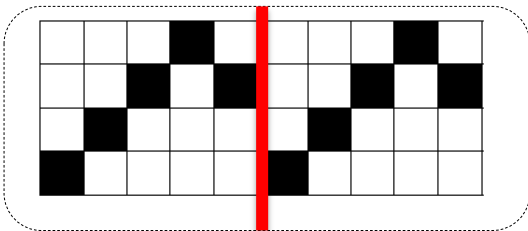
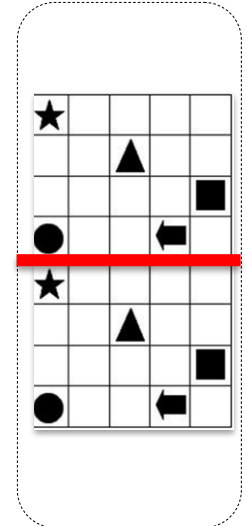
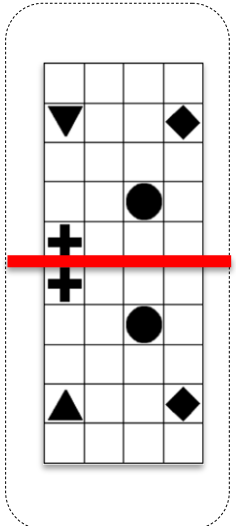
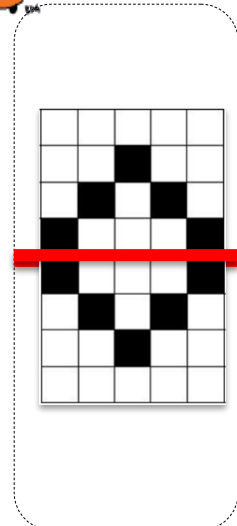
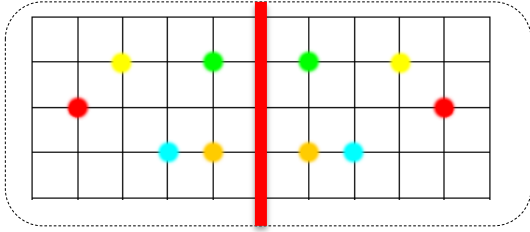
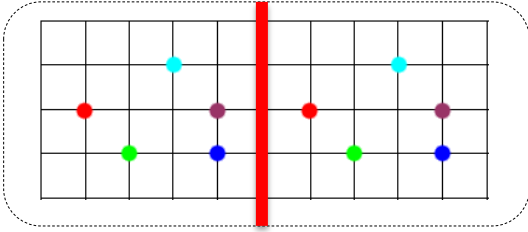


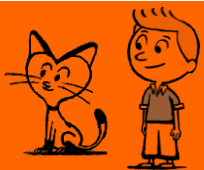


# Géométrie

## La symétrie

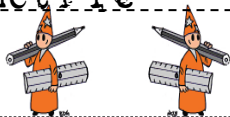
1 Entoure les paires qui sont symétriques.





# Géométrie

## La symétrie



1 Choisis le symétrique par rapport à l'axe.

Grid 1: A 5x5 grid with a vertical red axis on the right. The left side contains a star at (1,1), a square at (2,3), a circle at (2,4), and a right-pointing arrow at (3,4). A question mark is to the right of the axis.

Options:

- Option A: A 5x5 grid with a star at (1,1), a square at (2,3), a circle at (2,4), and a right-pointing arrow at (3,4).
- Option B: A 5x5 grid with a triangle at (1,3), a circle at (2,1), a square at (2,3), and a left-pointing arrow at (3,1).

Grid 2: A 5x5 grid with a vertical red axis on the left. A question mark is to the left of the axis. The right side contains a left-pointing arrow at (1,2), a circle at (1,3), a square at (2,3), a star at (2,4), a downward-pointing triangle at (3,2), and a star at (3,4).

Options:

- Option A: A 5x5 grid with a star at (1,1), a square at (2,3), a circle at (2,4), and a right-pointing arrow at (3,4).
- Option B: A 5x5 grid with a triangle at (1,3), a circle at (2,1), a square at (2,3), and a left-pointing arrow at (3,1).

Grid 3: A 5x5 grid with a horizontal red axis on the bottom. The top part contains a star at (1,4), a left-pointing arrow at (2,1), a square at (2,2), a right-pointing triangle at (2,4), and a circle at (3,1).

Options:

- Option A: A 5x5 grid with a star at (1,4), a left-pointing arrow at (2,1), a square at (2,2), a right-pointing triangle at (2,4), and a circle at (3,1).
- Option B: A 5x5 grid with a question mark.
- Option C: A 5x5 grid with a circle at (1,2), a left-pointing arrow at (2,1), a square at (2,3), a right-pointing triangle at (2,4), and a star at (3,4).

Grid 4: A 5x5 grid with a vertical red axis on the right. The left side contains a plus sign at (2,1), a circle at (2,2), a star at (3,4), and a right-pointing triangle at (3,5). A question mark is to the right of the axis.

Options:

- Option A: A 5x5 grid with a triangle at (1,1), a circle at (2,2), a plus sign at (2,3), and a star at (3,1).
- Option B: A 5x5 grid with a star at (1,2), a plus sign at (2,3), a circle at (2,4), and a triangle at (3,1).

Grid 5: A 5x5 grid with a vertical red axis on the left. A question mark is to the left of the axis. The right side contains a star at (1,1), a triangle at (1,4), a square at (2,3), a circle at (2,4), and a right-pointing arrow at (3,4).

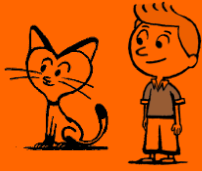
Options:

- Option A: A 5x5 grid with a star at (1,1), a square at (2,3), a circle at (2,4), and a right-pointing arrow at (3,4).
- Option B: A 5x5 grid with a triangle at (1,3), a circle at (2,1), a square at (2,3), and a left-pointing arrow at (3,1).

Grid 6: A 5x5 grid with a horizontal red axis on the bottom. A question mark is above the axis. The top part contains a plus sign at (1,2), a circle at (1,3), a star at (1,4), and a right-pointing triangle at (1,5).

Options:

- Option A: A 5x5 grid with a plus sign at (1,2), a circle at (1,3), a star at (1,4), and a right-pointing triangle at (1,5).
- Option B: A 5x5 grid with a plus sign at (2,3), a circle at (2,4), a star at (3,1), and a downward-pointing triangle at (3,5).



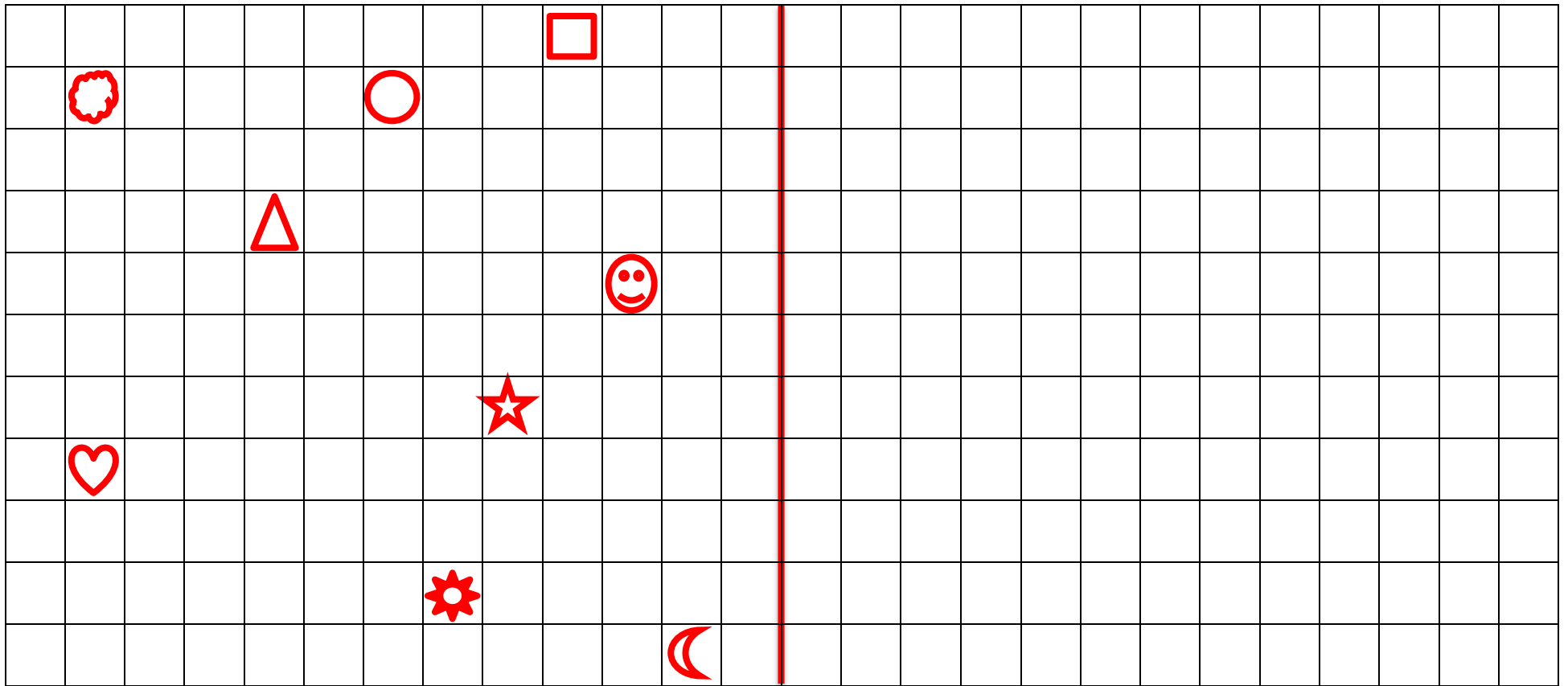
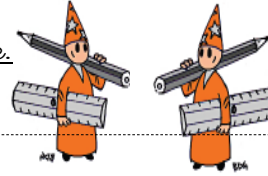
# Géométrie

Fiche 3

## La symétrie

1

Reproduis les dessins par symétrie par rapport à l'axe rouge.



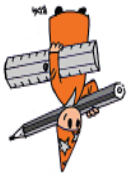
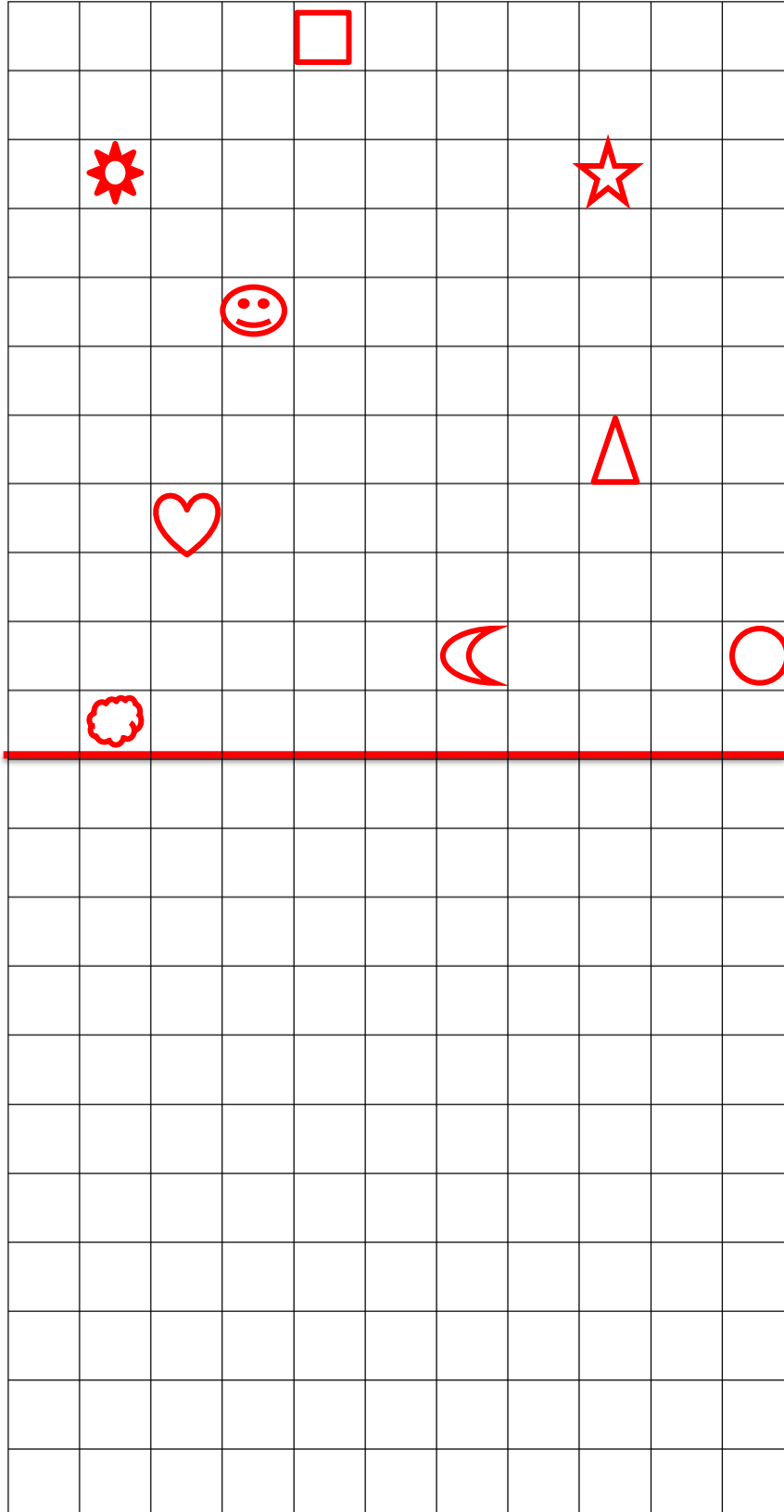


# Géométrie

Fiche 4

## La symétrie

1 Reproduis les dessins par symétrie par rapport à l'axe rouge.



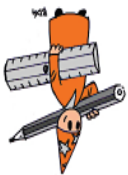
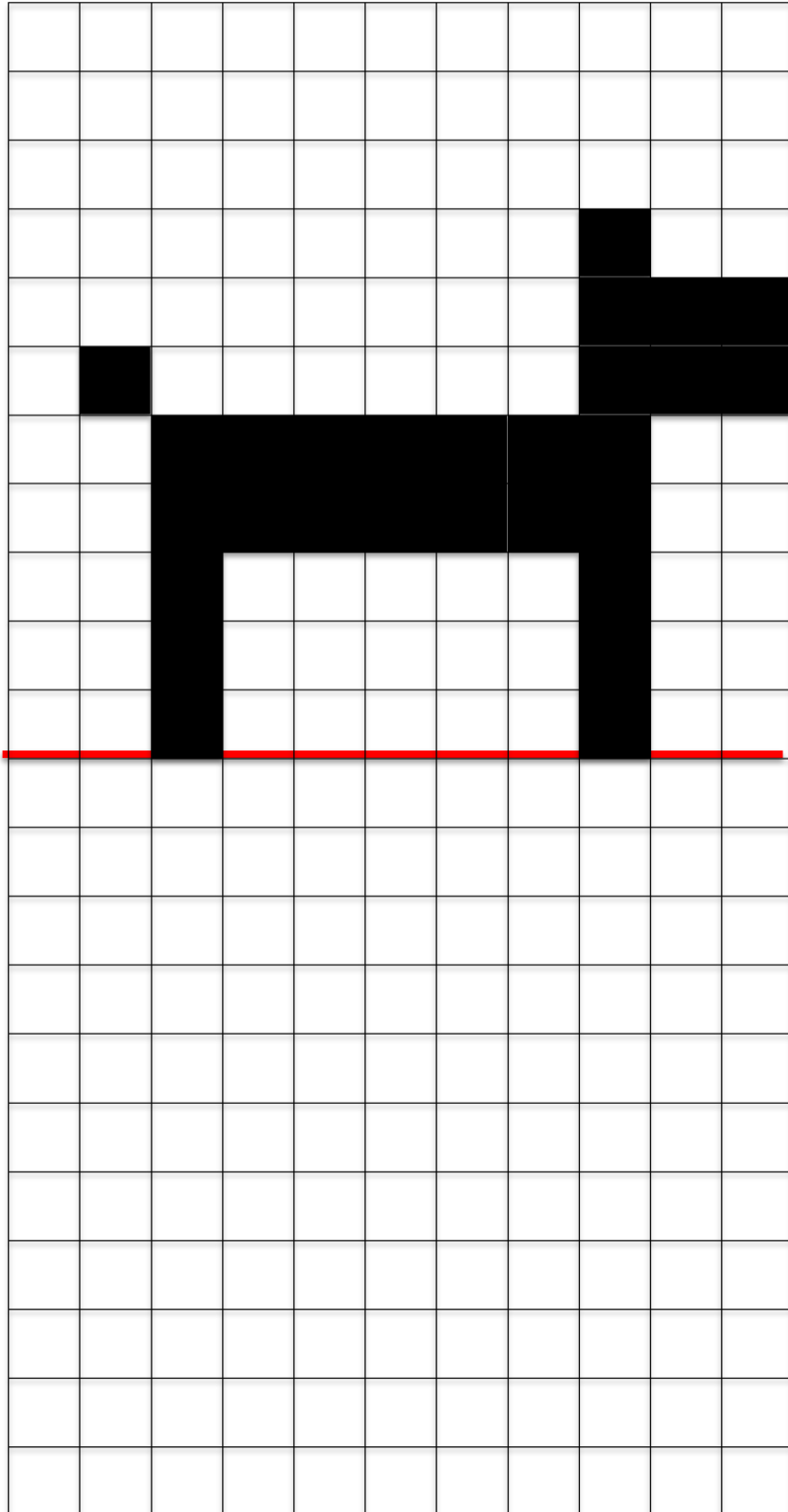


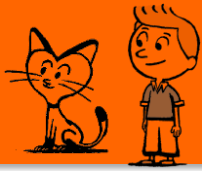
# Géométrie

Fiche 5

## La symétrie

1 Noircis les cases par symétrie par rapport à l'axe rouge.





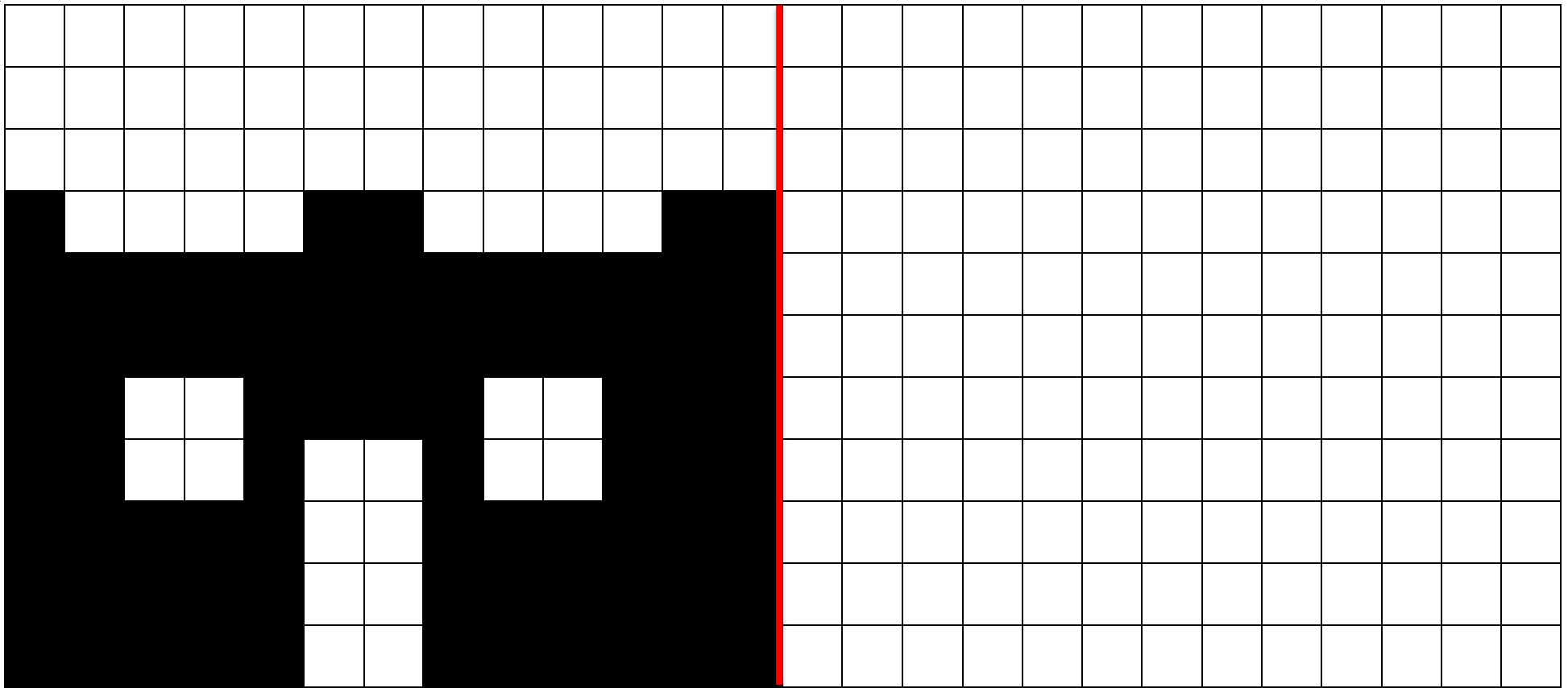
# Géométrie

Fiche 6

## La symétrie

1

Noircis les cases par symétrie par rapport à l'axe rouge.





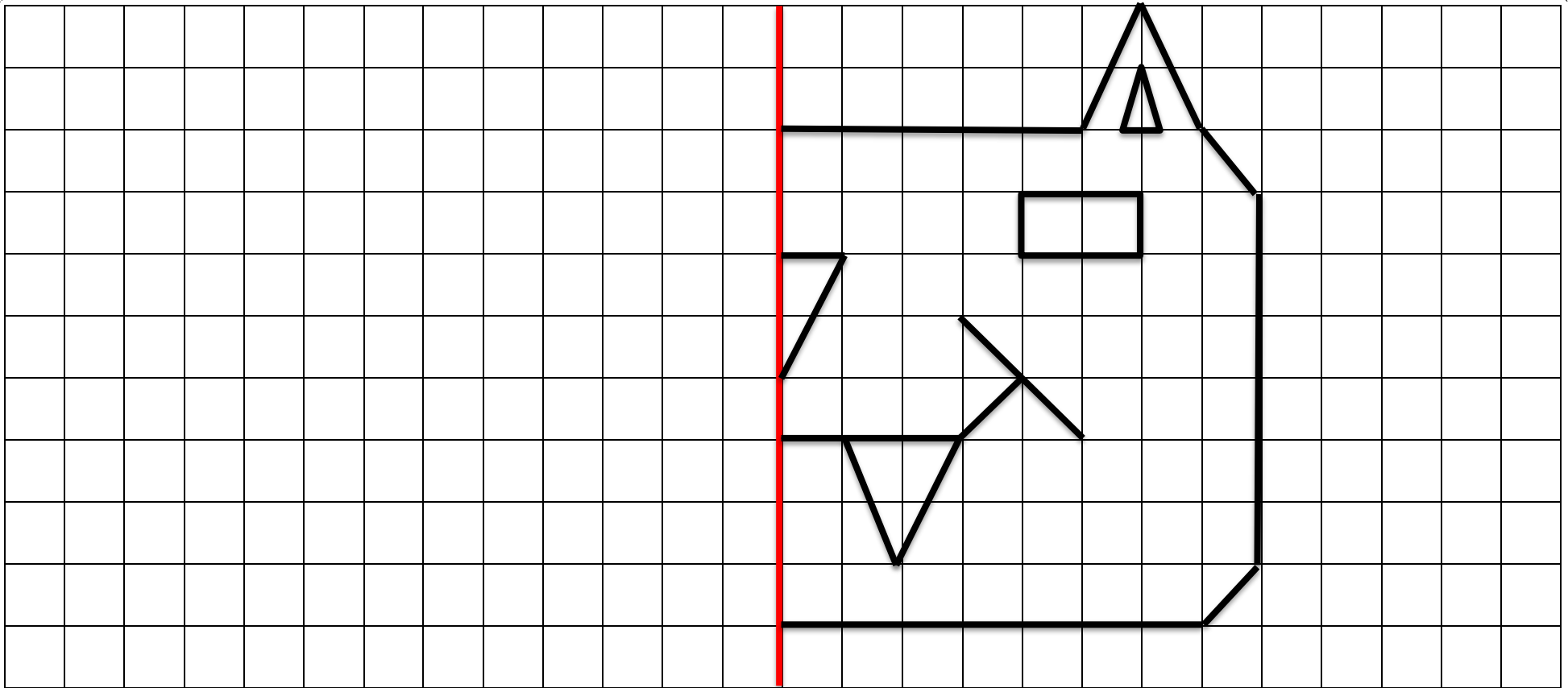


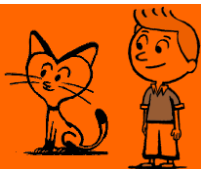
# Géométrie

Fiche 7

## La symétrie

1 Termine ce dessin par symétrie par rapport à l'axe rouge.



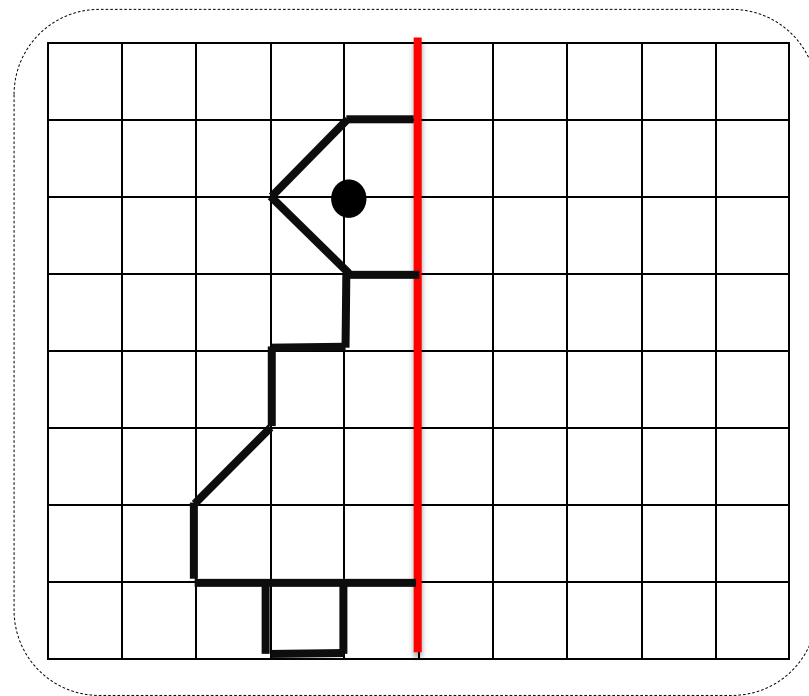
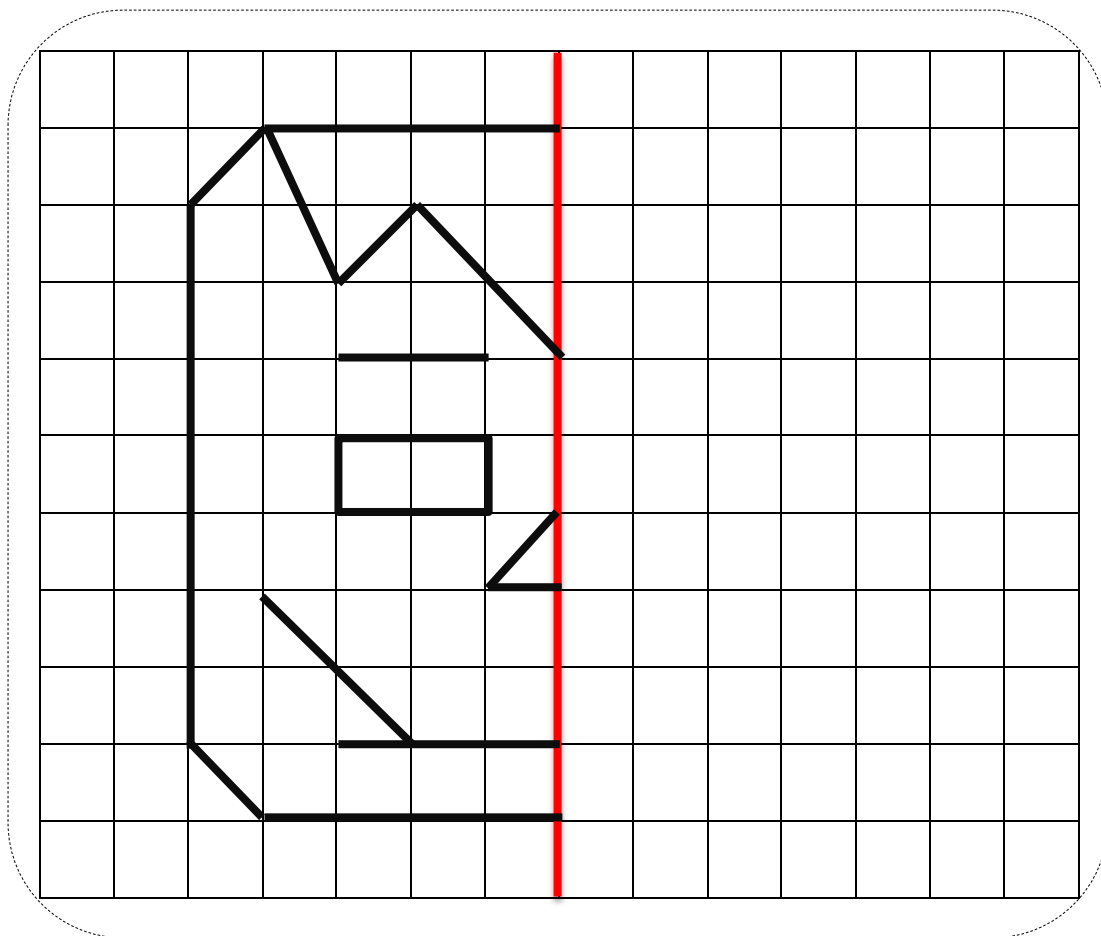


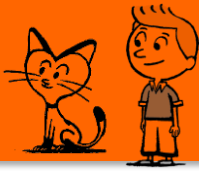
# Géométrie

Fiche 8

## La symétrie

1 Termine ces dessins par symétrie par rapport à l'axe rouge.



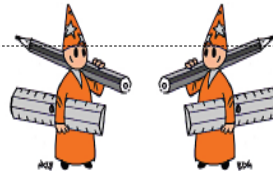
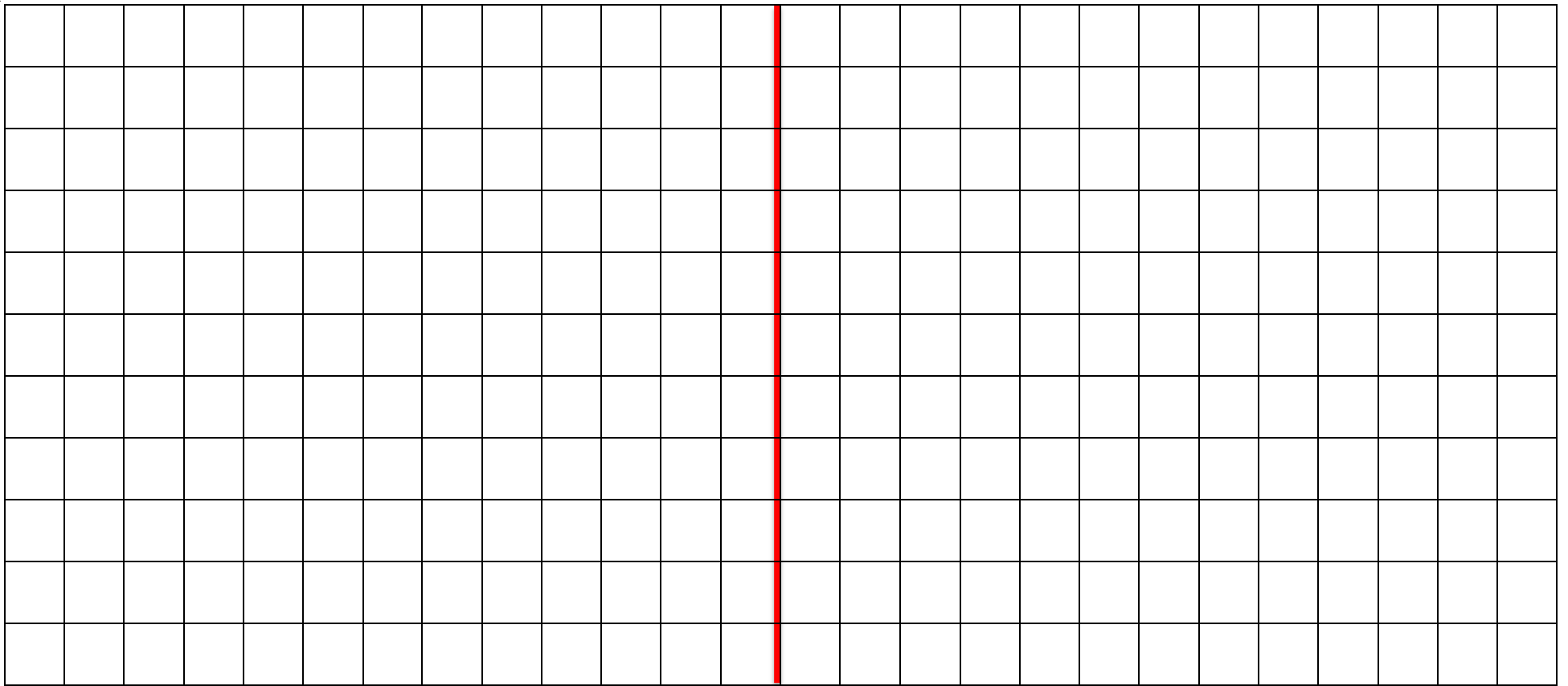


# Géométrie

Fiche 9

## La symétrie

1 Fais un dessin dans une des parties du cadre et donne-le à camarade pour qu'il en fasse le symétrique.



CE1