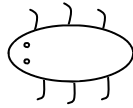


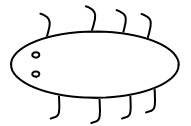
**DÉCOUVERTE DU VIVANT** : distinguer ranger, trier et classer les êtres vivants.

Trie les invertébrés en 4 familles :

CEUX QUI ONT 6 PATTES :  
(3 de chaque côté)



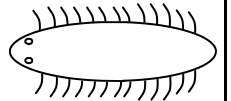
CEUX QUI ONT 8 PATTES :  
(4 de chaque côté)



CEUX QUI N'ONT PAS DE PATTES :



CEUX QUI ONT PLUS 8 DE PATTES :

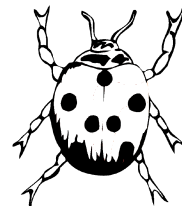




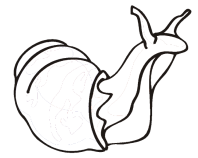
MILLE PATTES



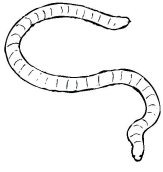
SERPENT



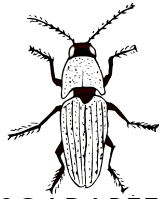
COCCINELLE



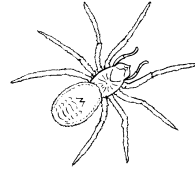
ESCARGOT



VER DE TERRE



SCARABÉE



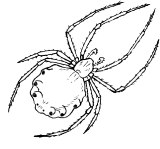
ARAIGNÉE



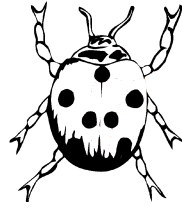
CLOPORTE



MILLE PATTES



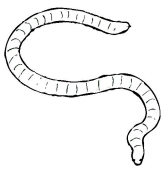
SERPENT



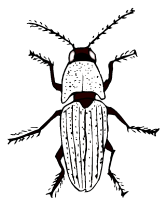
COCCINELLE



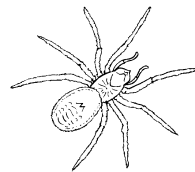
ESCARGOT



VER DE TERRE



SCARABÉE



ARAIGNÉE



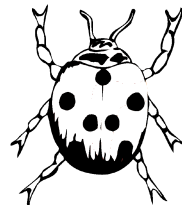
CLOPORTE



MILLE PATTES



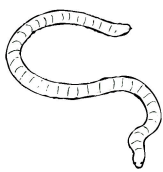
SERPENT



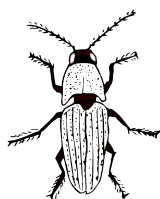
COCCINELLE



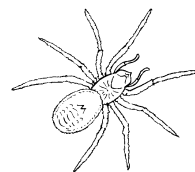
ESCARGOT



VER DE TERRE



SCARABÉE



ARAIGNÉE



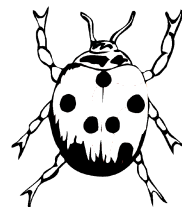
CLOPORTE



MILLE PATTES



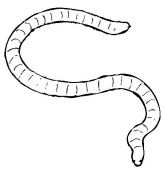
SERPENT



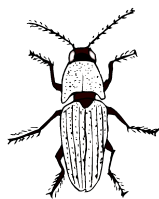
COCCINELLE



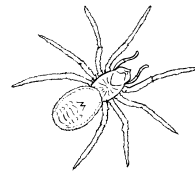
ESCARGOT



VER DE TERRE



SCARABÉE



ARAIGNÉE



CLOPORTE