

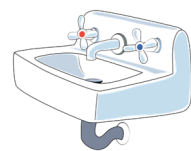
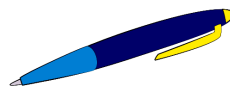
le son [l] de lune



J'écris la syllabe dans laquelle j'entends [l]:



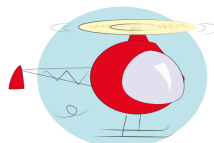
Handwriting practice line with a dot and the letter 'l' in the first box, and dots in the following six boxes.



Handwriting practice line with dots in the following six boxes.



Handwriting practice line with dots in the following six boxes.



Handwriting practice line with dots in the following six boxes.

NB: Ce sont les syllabes entendues qui sont demandées.