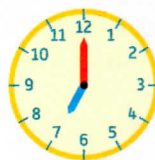
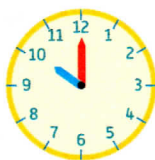
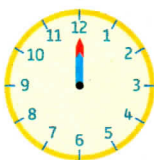


CALCUL MENTAL

Énoncer des calculs issus des tables d'addition de 5 et 6.



1 Relie chaque image de la journée d'école de Lali à l'horloge qui correspond.

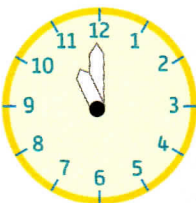
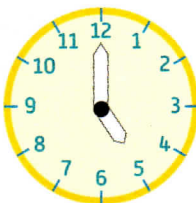
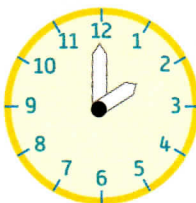


2 Colorie l'aiguille des heures en bleu.

2 heures

5 heures

11 heures

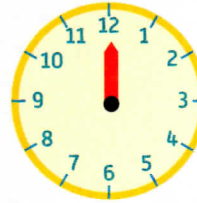


3 Dessine l'aiguille manquante en rouge ou en bleu.

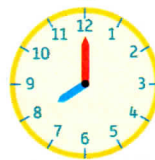
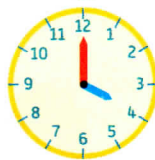
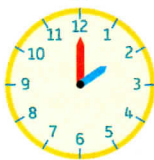
4 heures

6 heures

2 heures



4 Relie chaque réveil à l'horloge qui correspond.



5 Complète avec < ou > .

7	17	25	5	18	21	20	19
47	28	31	32	23	32	48	40