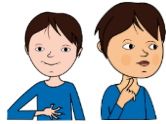
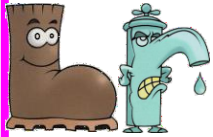
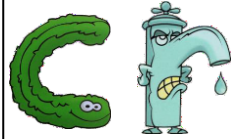


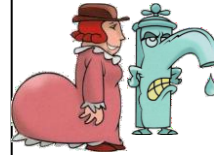
Groupes consonantiques



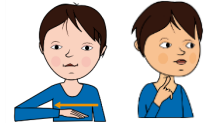
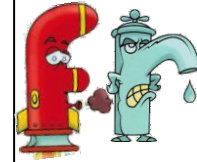
bras
abricot
arbre
bruit
novembre



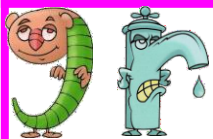
crabe
crème
crêpe
crèche
sucre



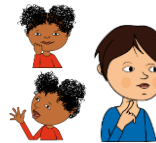
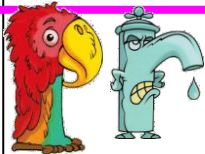
drap
cadre
drôle
coudre
moudre



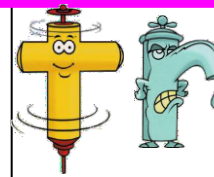
frôle
fruit
frêle
frousard
frite



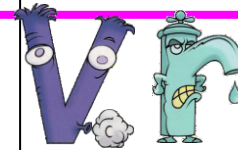
gros
grêle
tigre
gris
grive



près
pris
propre
prune
prête

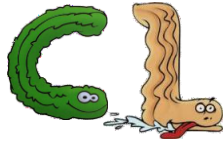
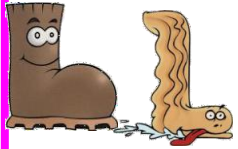


trop
très
triste
trib
malotru



ouvrir
lèvre
couvre
chèvre
livre

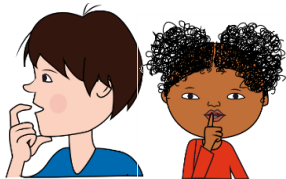
Groupes consonantiques



Du **s**able
La **t**able
Sablé
Cart**a**ble
cap**a**ble

Une **c**loche
Un **cl**ub
La **cl**avicule
Il **r**acle
ré**cl**amé

Un **t**rêfle
Une **f**lûte
La **r**afle
Un **m**ufle
Le **f**luor



Un **g**lobe
Il **gl**isse
Des **gl**obules
Une **é**glise
Une **r**ègle

Le **pl**âtre
Un **pl**atane
Il **pl**ane
Une **pl**isure
plate

