

e
e
e
E

[e]

cheval



Etude du son [e]

1. Dictée phonétique.

X	O	X	X	O	O	X	X	X	O
---	---	---	---	---	---	---	---	---	---

2. Écris les syllabes dictées par la maîtresse.

2.

○	○	○	○	○
○	○	○	○	○

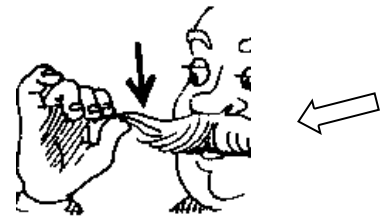
3. Dans les mots suivants, on entend toujours [e]. Mets une x à l'endroit où tu entends [e].



la _ _ _



le _ _



la _ _ _



la _ _ _



des _ _ _

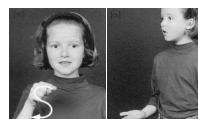
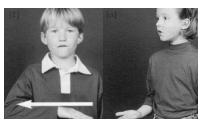


la _ _ _

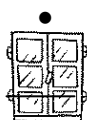
4. Entoure la lettre "e" chaque fois que tu la vois : e e e E

e	é	e	a	e	è	e	é	e	a	a	e	e	é	e	a
E	É	M	E	F	E	A	É	E	W	E	É	E	F	É	E
e	é	e	a	e	o	e	e	s	e	e	é	e	o	e	e

5. Complète avec la syllabe qui manque et relie aux gestes des sons

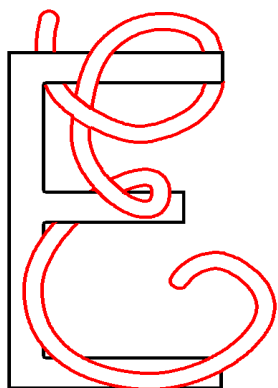


fe
che
me
se



la ___ mise la ___ nêtre le ___ cond la ___ minée le ___ lon

6. Je relie l'article qui convient à l'image

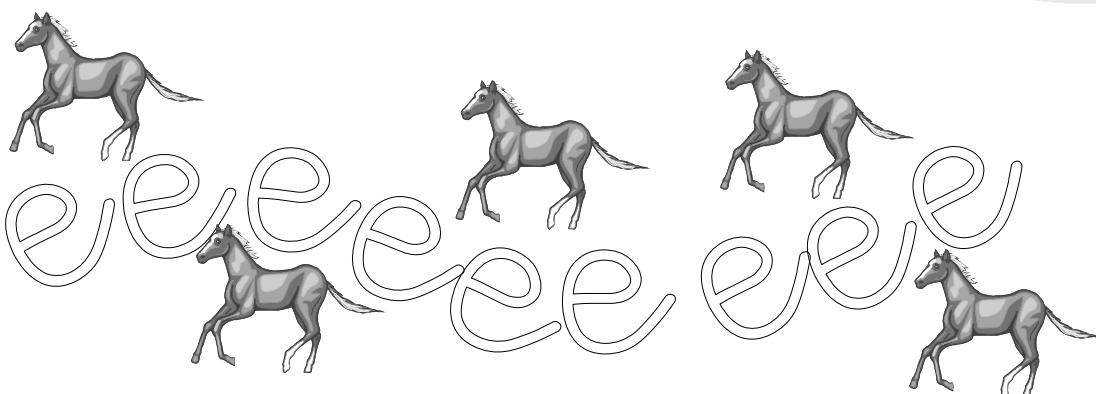
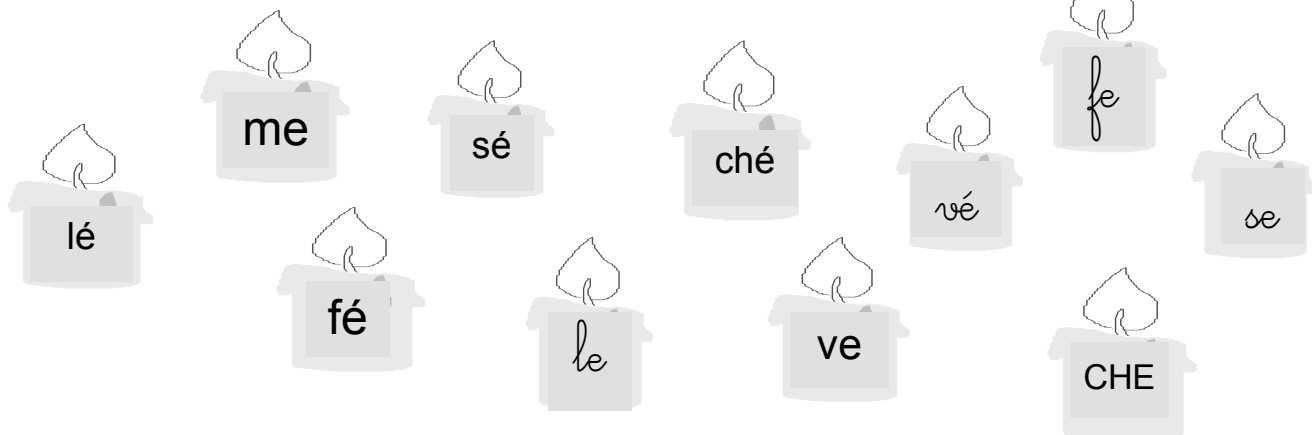


le .

la .



7. Colorie la syllabe de la couleur demandée



Ecris "le" ou "la".

le

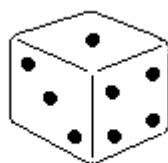
la



→



→



→



→



→



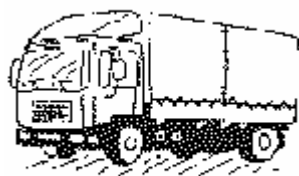
→



→



→



→



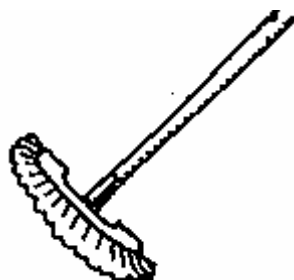
→



→



→



→



→



→



→