

Christmas Pop-up Card Instructions

Print pages 1 through 3 on cardstock and follow the assembly instructions. The other pages can be printed on normal paper.

1. Cut out the card along the thick outer line and fold in two.

2. Cut, score, and assemble the two long strips of paper to form rectangles. Glue the rectangles on the card where indicated by the dotted lines.

4. Cut, score, and assemble the medium strip of paper to form a smaller rectangle, then glue it in the middle of the card where indicated with the dotted lines.

5. Cut out Joseph, Mary, and baby Jesus and glue them on this tab. Optional: you may curve the figure a little to add a nice effect.

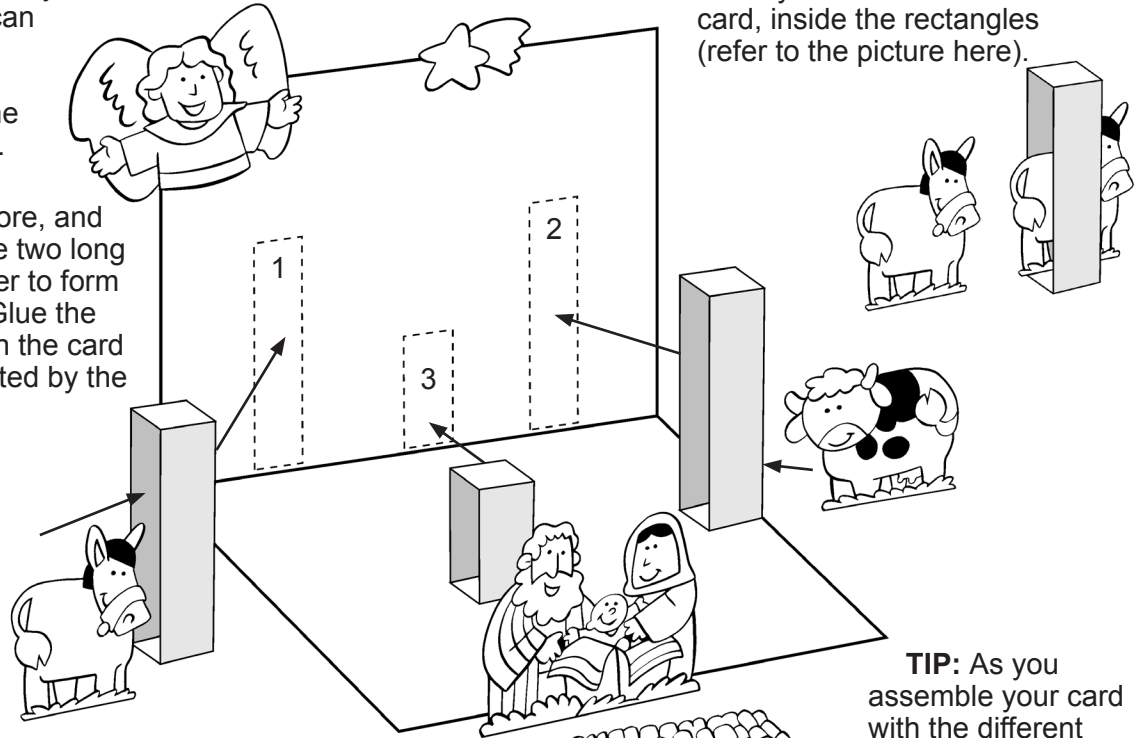
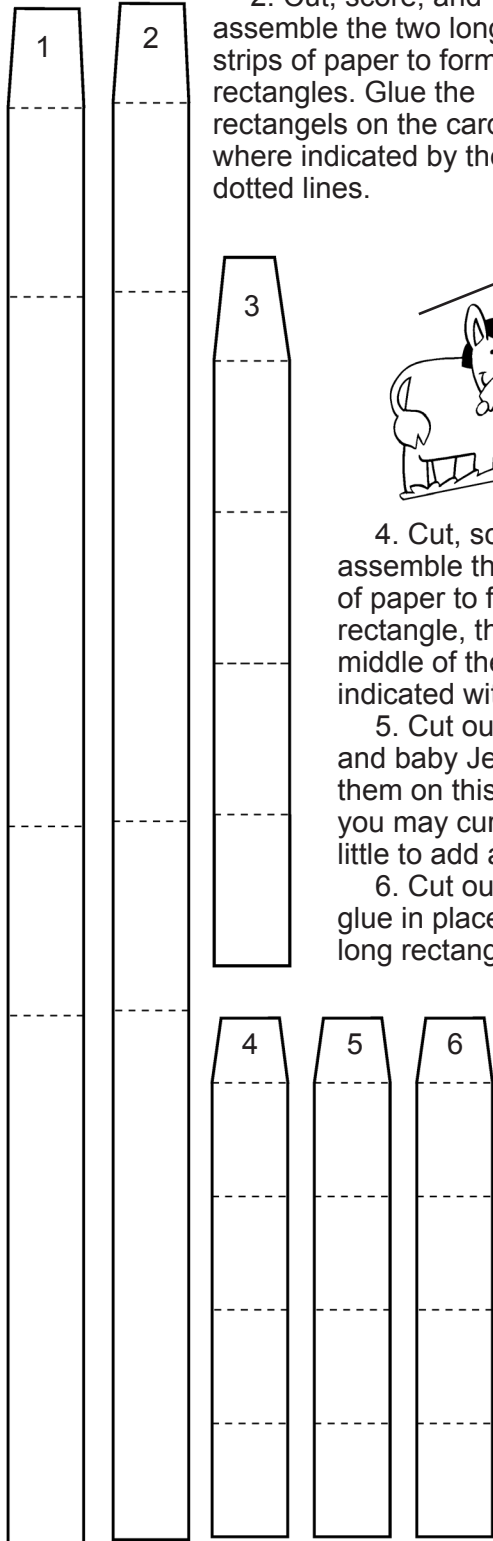
6. Cut out the house and glue in place over the two long rectangles.

7. Cut out and assemble the three smaller strips of paper, and glue to the shepherds and little sheep (refer to the photo).

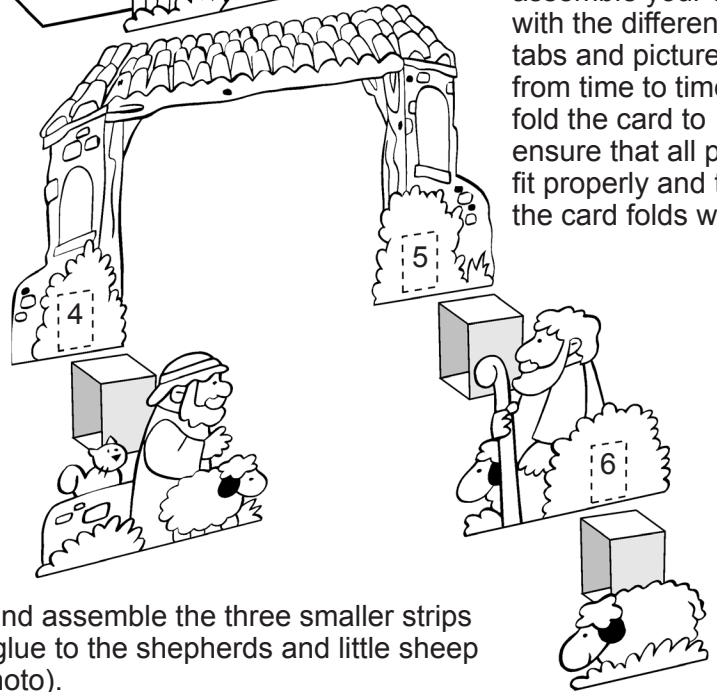
8. You can now decorate the front and back of your card with some of the illustrations included in the pdf. Or you can create your own card by simply gluing the pictures on the scenery without making a pop-up card, or find other ways to use these illustrations.

Now write a Christmas message and send the card to your loved ones.

3. Cut out and glue the donkey and cow on the card, inside the rectangles (refer to the picture here).



TIP: As you assemble your card with the different tabs and pictures, from time to time, fold the card to ensure that all parts fit properly and that the card folds well.

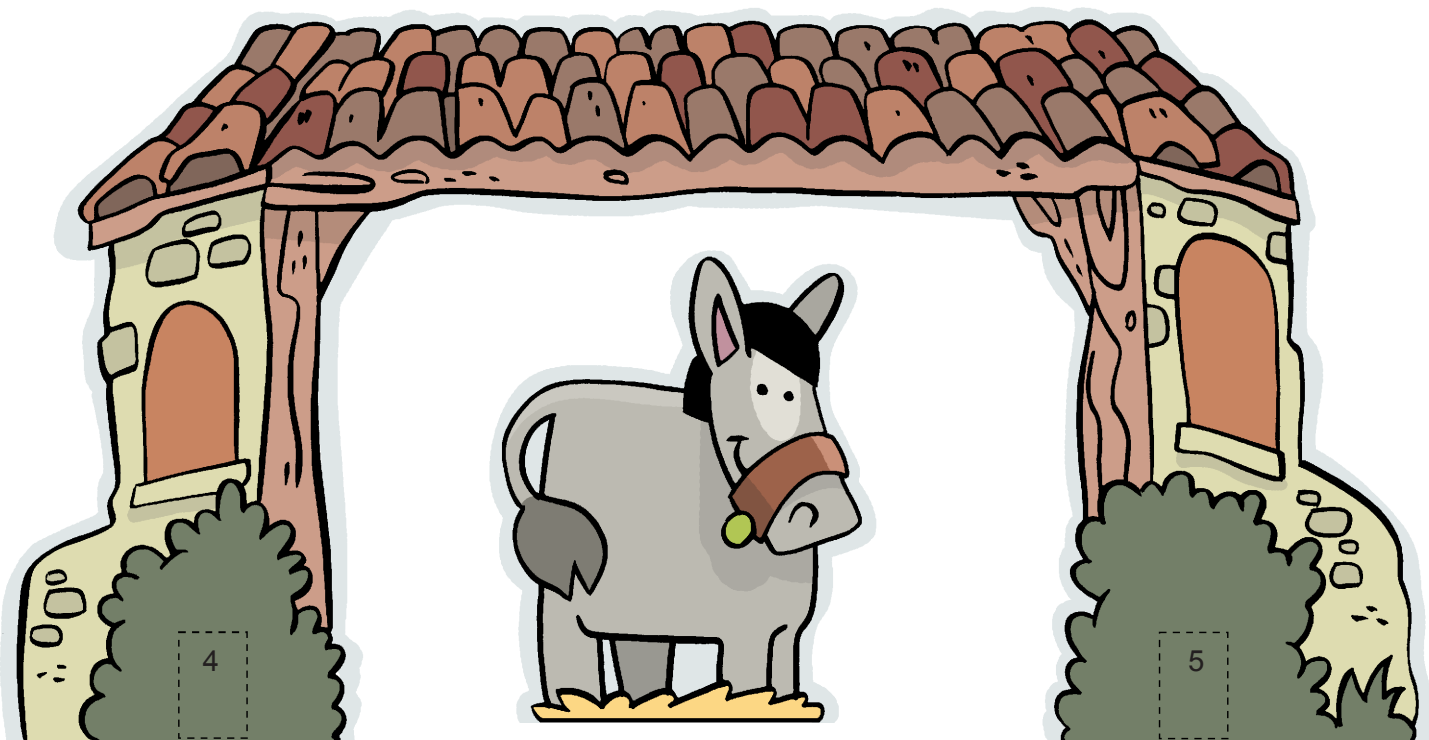
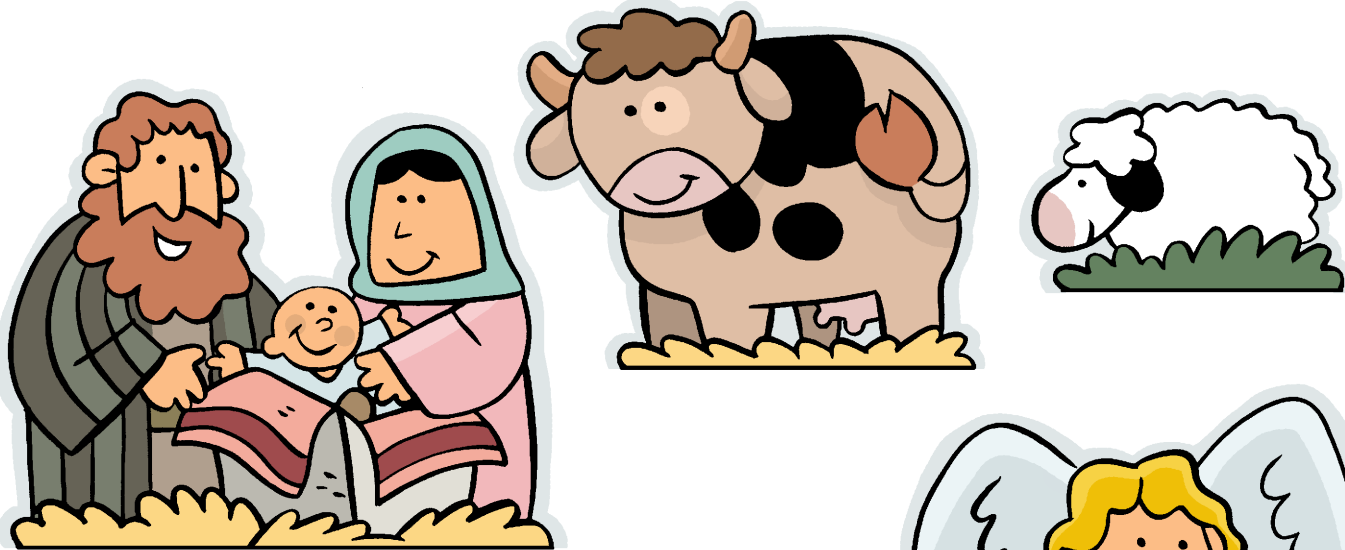


**Have fun!
Merry Christmas!**

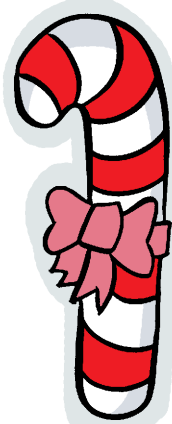
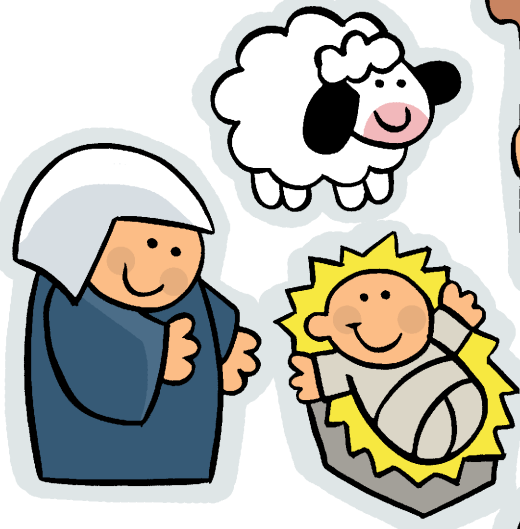
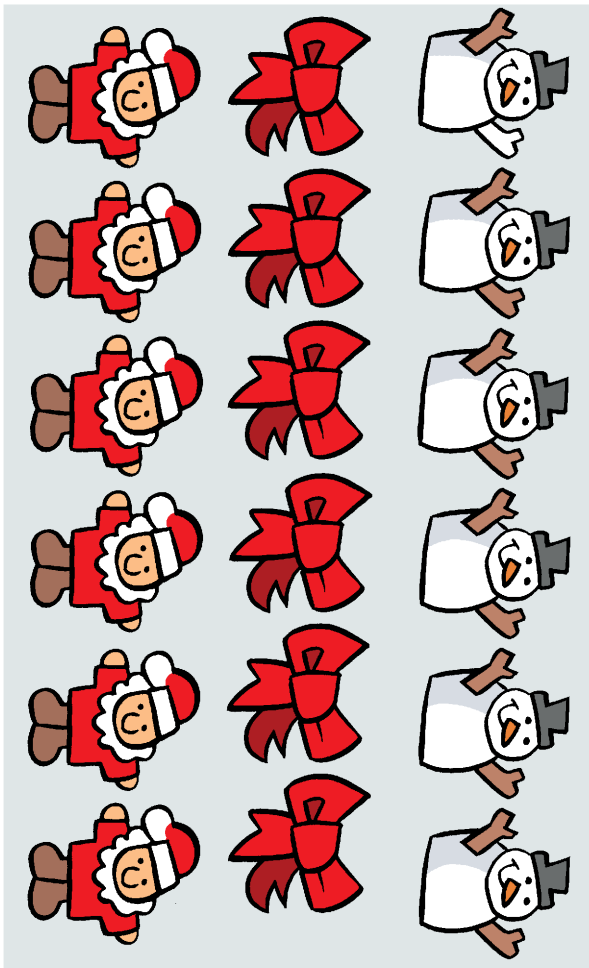
Illustrations and design by Didier Martin.

Permission granted to print for personal use only. Distribution is prohibited.











A B C D E F G
H I J K L M N
O P Q R S T U
V W X Y Z



A B C D E F G
H I J K L M N
O P Q R S T U
V W X Y Z



A B C D E F G
H I J K L M N
O P Q R S T U
V W X Y Z

