

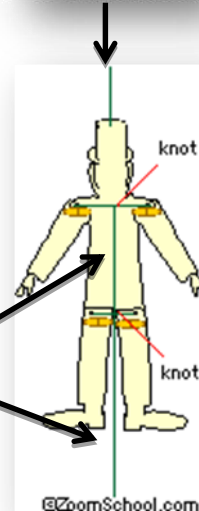
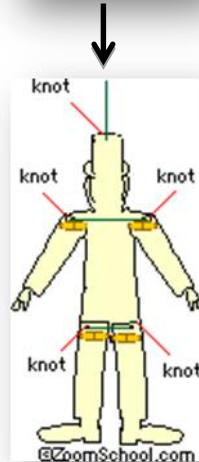
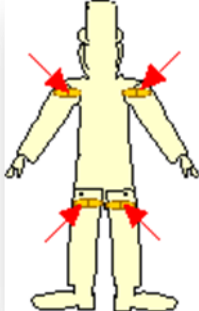


# BUILD A LEPRECHAUN MARIONETTE

- Supplies needed:
- ✓ Black and white Model
  - ✓ paste
  - ✓ thin cardboard
  - ✓ scissors
  - ✓ 4 paper connectors
  - ✓ a needle
  - ✓ A thread



1. Cut **parts**.
2. **Stick** the template to thin cardboard. Let it dry.
3. Cut out the parts. Punch holes where the **large black dots** are.
4. **Connect** the **arms and legs** to the **body** using the paper connectors.
5. Thread the needle and knot it.
6. With the **arms and legs** hanging down, tie a thread to the **middle** of each string. This is the **PULL** string that makes the arms and legs move
7. **Color** it in **green** **with** your **crayons**.
8. **One** light **green** for the up and **one** dark **green** for the down.



I guessed:

**PARTS** : .....

**WITH** : .....

**CONNECT** : .....

**MIDDLE** : .....



If it's finished and well done, you can color them



STRiNG