

**ELECTRIC CITY**

**GRAND COULEE DAM** (3W7) 2 SW UTC-8(-7DT) N47°55.32' W119°04.98'

SEATTLE  
L-13A

1588 B NOTAM FILE SEA

**RWY 03-21:** H4199X75 (ASPH) S-26 MIRL

**RWY 03:** Hill.

**RWY 21:** PAPI(P2L). Ground. Rgt tfc.

**SERVICE:** LGT ACTIVATE MIRL Rwy 03-21—CTAF.

**AIRPORT REMARKS:** Unattended. Geese and other wildlife invof of runway.

**AIRPORT MANAGER:** 509-633-1319

**COMMUNICATIONS:** CTAF 122.9

**RADIO AIDS TO NAVIGATION:** NOTAM FILE EPH.

**EPHRATA (H) VORTACW** 112.6 EPH Chan 73 N47°22.68'  
W119°25.44' 002° 35.5 NM to fld. 1250/21E.

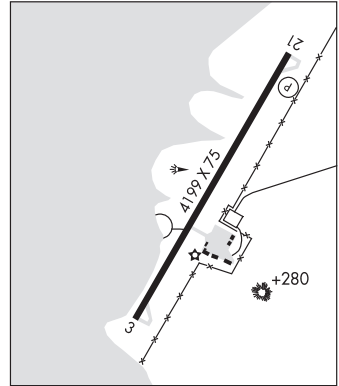
VOR unusable:

310°-350° byd 25 NM blo 6,500'

TACAN AZIMUTH & DME portion unusable:

280°-295° byd 25 NM blo 7,000'

310°-350° byd 25 NM blo 6,500'



**ELENSBURG**

**BOWERS FLD** (ELN)(KELN) 2 N UTC-8(-7DT) N47°01.98' W120°31.84'

SEATTLE  
H-1C, L-13A  
IAP

1764 B TPA-2598(834) NOTAM FILE ELN

**RWY 07-25:** H5590X150 (ASPH) S-12.5 0.8% up E

**RWY 07:** P-line.

**RWY 25:** PAPI(P4R).

**RWY 11-29:** H4301X150 (CONC) S-35, D-57, 2D-100 MIRL  
0.4% up NW

**RWY 29:** REIL. PAPI(P2R)—GA 3.0° TCH 40'.

**SERVICE:** S4 FUEL 100LL, JET A LGT ACTIVATE MIRL Rwy  
11-29—123.0.

**AIRPORT REMARKS:** Attended Mon-Sat 1500-0000Z±. Cold temperature  
restricted airport. Altitude correction required at or below -17C/1F.  
100LL self service avbl, credit card. Rwy 07-25 CLOSED Dec 15-Feb  
28, no maintenance avbl. Rwy 07-25 cracks in rwy sfc. Rwy 07-25  
has weeds growing through cracks in pavement first 2000'.

**AIRPORT MANAGER:** 509-962-7523

**WEATHER DATA SOURCES:** ASOS 118.375 (509) 925-2040. HIWAS 117.9 ELN.

**COMMUNICATIONS:** CTAF/UNICOM 123.0

**ELENSBURG RCO** 122.2 (SEATTLE RADIO)

**SEATTLE CENTER APP/DEP CON** 132.6

**RADIO AIDS TO NAVIGATION:** NOTAM FILE ELN.

**ELENSBURG (H) VOR/DME** 117.9 ELN Chan 126 N47°01.46'  
W120°27.50' 259° 3.0 NM to fld. 1770/21E. HIWAS.

VORTAC unusable:

158°-163° byd 27 NM

163°-268° byd 33 NM

VOR portion unusable:

040°-080° byd 34 NM

300°-040° byd 25 NM

DME unusable:

055°-070° byd 21 NM

070°-090° byd 34 NM

090°-158° byd 34 NM

300°-055° byd 21 NM

350°-025° byd 15 NM

TACAN AZIMUTH unusable:

055°-070° byd 21 NM

070°-090° byd 34 NM

090°-158° byd 34 NM

158°-163° byd 27 NM

163°-268° byd 33 NM

300°-055° byd 21 NM

350°-025° byd 15 NM

090°-158° byd 34 NM

