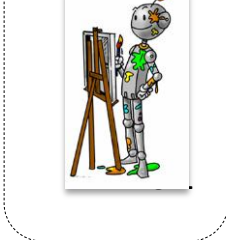
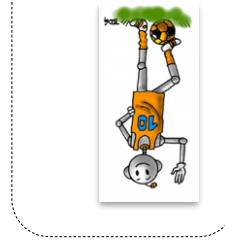
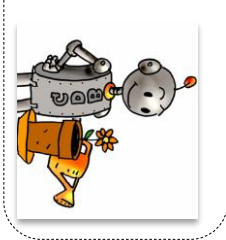
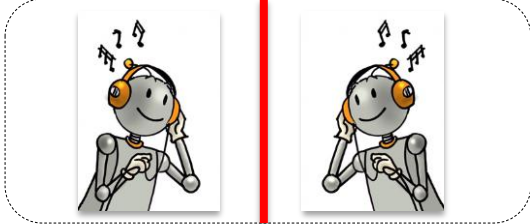
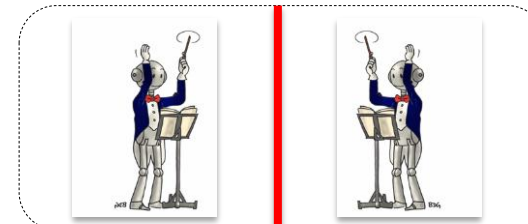
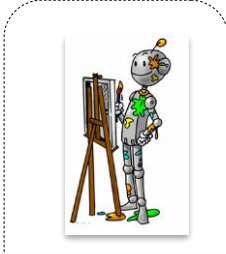
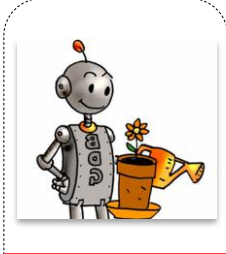
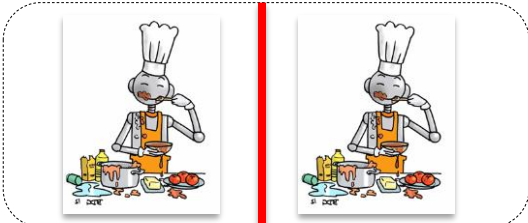
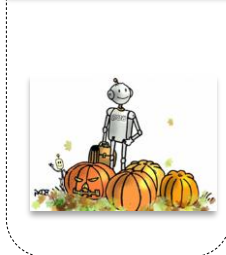
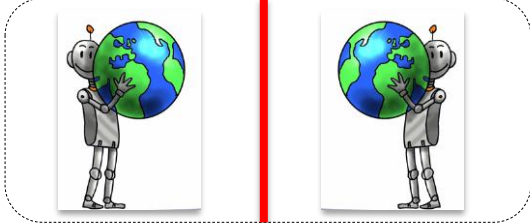
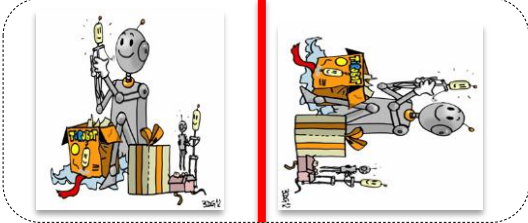
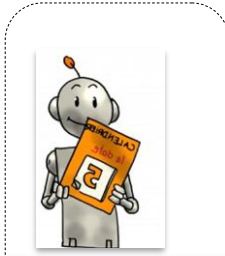
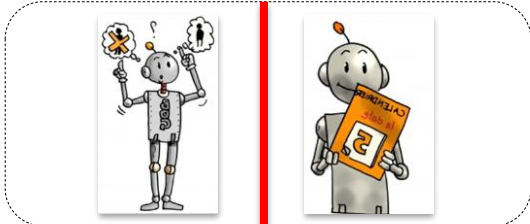
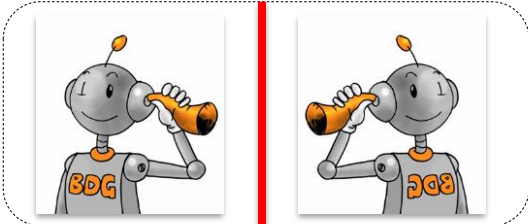
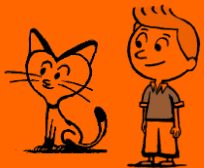


Géométrie

La symétrie

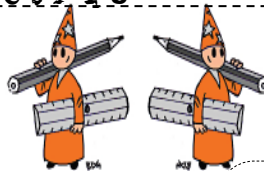
1 Entoure les paires qui sont symétriques.



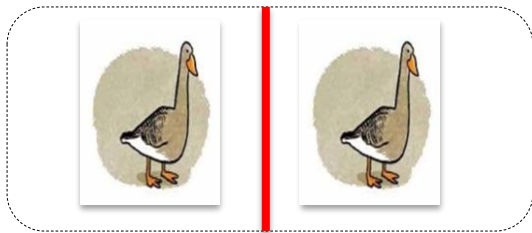
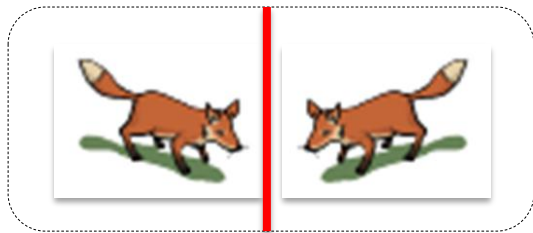
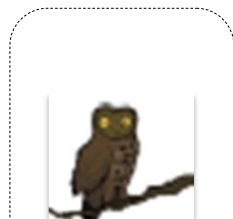
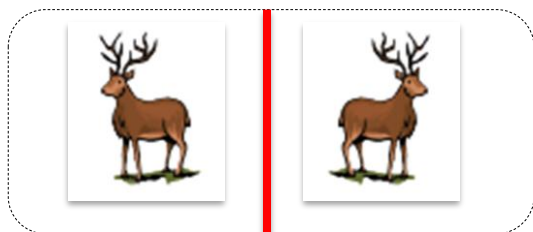
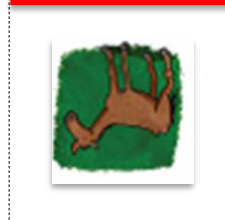
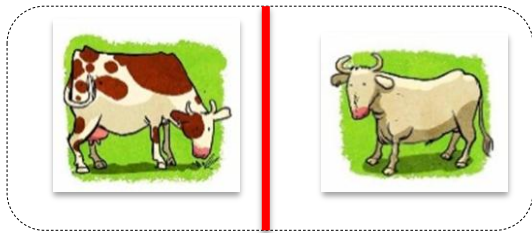
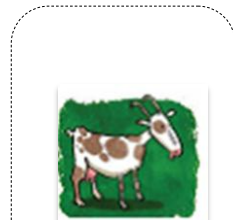
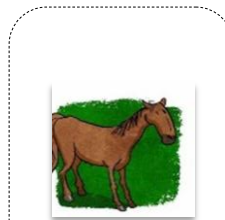
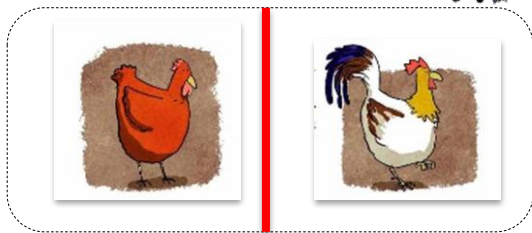
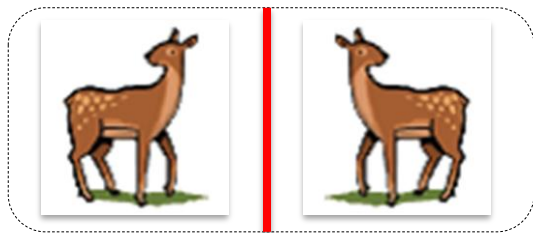


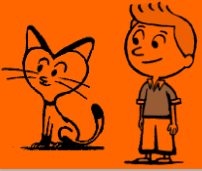
Géométrie

La symétrie



1 Entoure les paires qui sont symétriques.

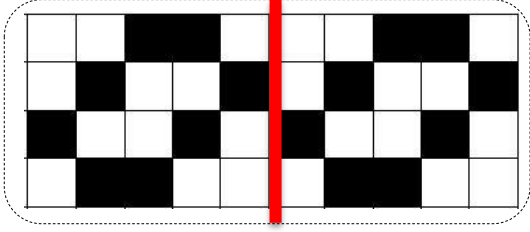
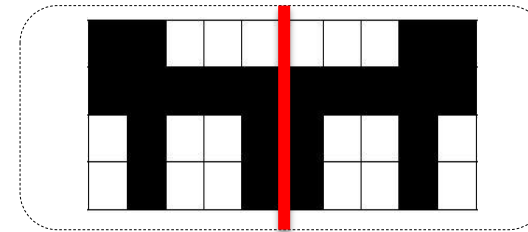
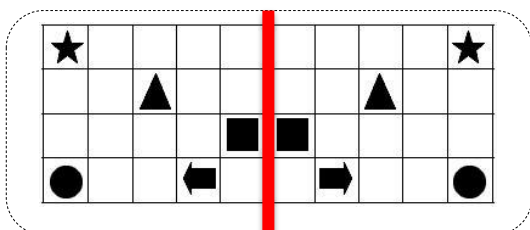
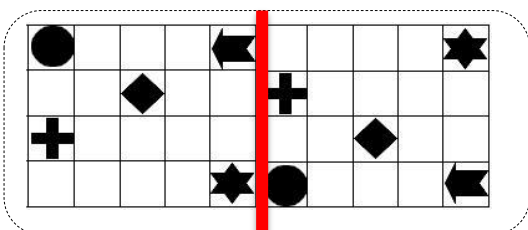
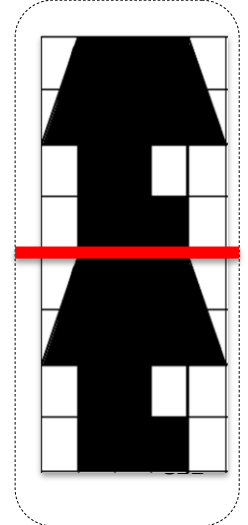
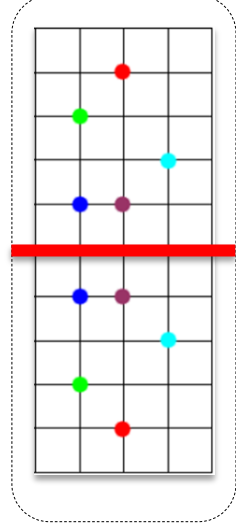
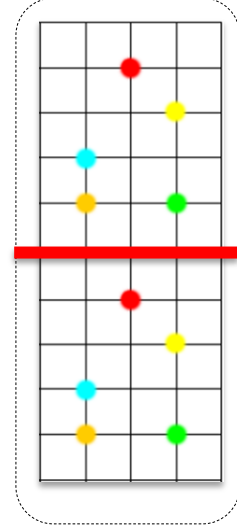
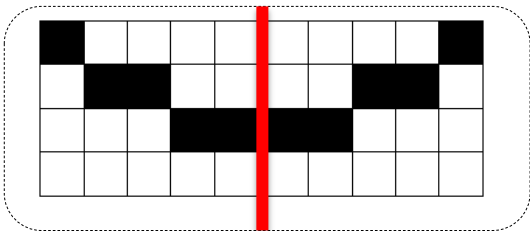
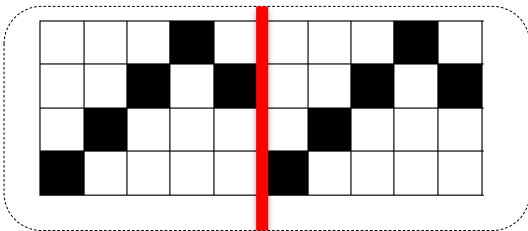
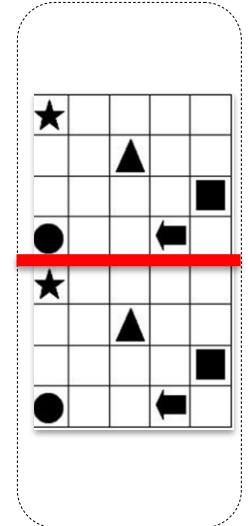
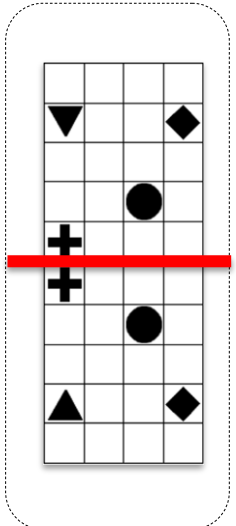
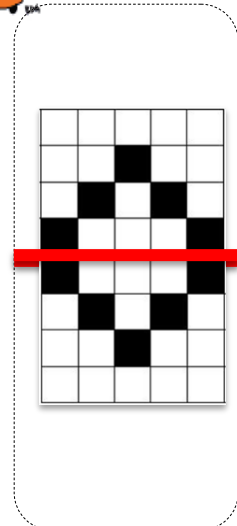
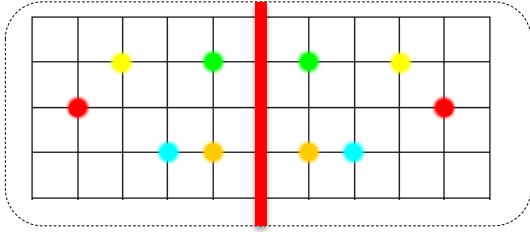
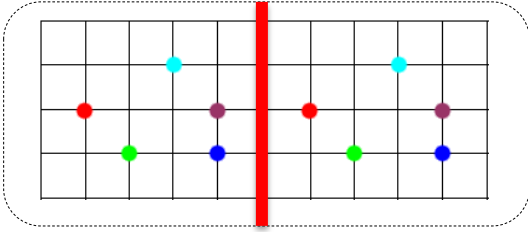


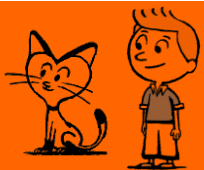


Géométrie

La symétrie

1 Entoure les paires qui sont symétriques.

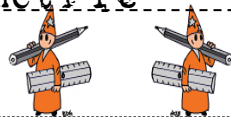




Géométrie

La symétrie

1 Choisis le symétrique par rapport à l'axe.



Grid 1: A 5x5 grid with a vertical red axis at column 4. The left side contains: (1,1) star, (1,4) triangle, (2,2) square, (2,5) circle, (3,4) arrow pointing right. A question mark is to the right.

Option A: A 5x5 grid with the same pattern as the original.

Option B: A 5x5 grid with the pattern mirrored across the axis: (1,4) star, (1,1) triangle, (2,3) square, (2,2) circle, (3,1) arrow pointing left.

Grid 2: A 5x5 grid with a vertical red axis at column 2. The right side contains: (1,3) arrow pointing left, (1,4) square, (1,5) star, (2,1) circle, (3,2) triangle pointing down. A question mark is to the left.

Option A: A 5x5 grid with the same pattern as the original.

Option B: A 5x5 grid with the pattern mirrored across the axis: (1,3) arrow pointing right, (1,4) square, (1,5) star, (2,4) circle, (3,3) triangle pointing up.

Grid 3: A 5x5 grid with a horizontal red axis at row 3. The top part contains: (1,4) star, (2,2) square, (2,3) arrow pointing left, (2,5) triangle pointing right, (3,1) circle. A question mark is below.

Option A: A 5x5 grid with the pattern mirrored across the axis: (3,4) star, (2,2) square, (2,3) arrow pointing right, (2,5) triangle pointing left, (1,1) circle.

Option B: A 5x5 grid with the same pattern as the original.

Grid 4: A 5x5 grid with a vertical red axis at column 4. The left side contains: (1,2) plus sign, (1,3) circle, (1,5) triangle pointing right, (2,4) star. A question mark is to the right.

Option A: A 5x5 grid with the pattern mirrored across the axis: (1,3) triangle pointing left, (1,2) circle, (1,4) plus sign, (2,5) star.

Option B: A 5x5 grid with the pattern mirrored across the axis: (1,4) star, (1,3) plus sign, (1,2) circle, (2,1) triangle pointing left.

Grid 5: A 5x5 grid with a vertical red axis at column 2. The right side contains: (1,4) triangle, (1,5) circle, (2,3) square, (2,4) arrow pointing right, (3,1) star. A question mark is to the left.

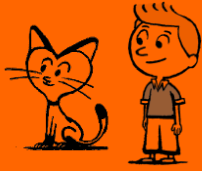
Option A: A 5x5 grid with the pattern mirrored across the axis: (1,3) triangle, (1,4) circle, (2,3) square, (2,4) arrow pointing left, (3,5) star.

Option B: A 5x5 grid with the same pattern as the original.

Grid 6: A 5x5 grid with a horizontal red axis at row 3. The top part contains: (1,4) star, (1,2) plus sign, (2,3) circle, (2,5) triangle pointing right. A question mark is below.

Option A: A 5x5 grid with the pattern mirrored across the axis: (3,4) star, (3,2) plus sign, (2,3) circle, (2,5) triangle pointing left.

Option B: A 5x5 grid with the pattern mirrored across the axis: (3,4) star, (3,2) plus sign, (2,3) circle, (2,5) triangle pointing left.



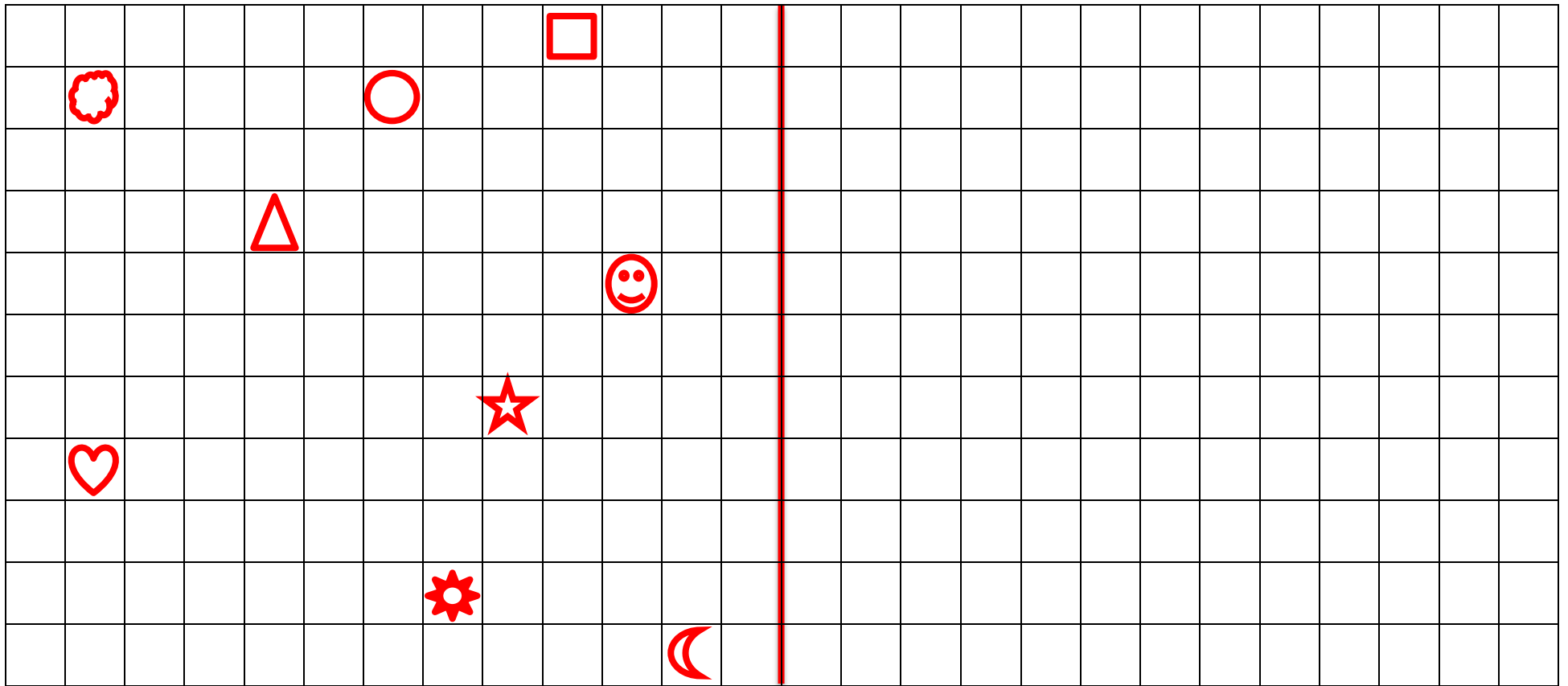
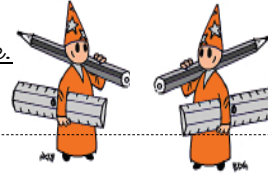
Géométrie

Fiche 3

La symétrie

1

Reproduis les dessins par symétrie par rapport à l'axe rouge.





Géométrie

Fiche 4

La symétrie

1

Reproduis les dessins par symétrie par rapport à l'axe rouge.

