

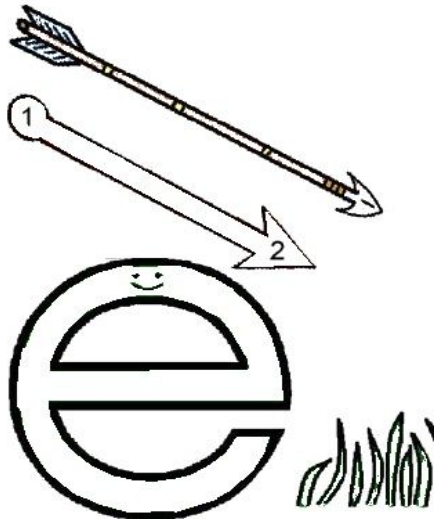
è



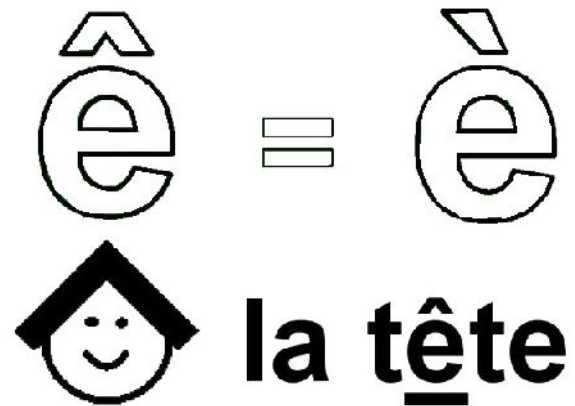
ê



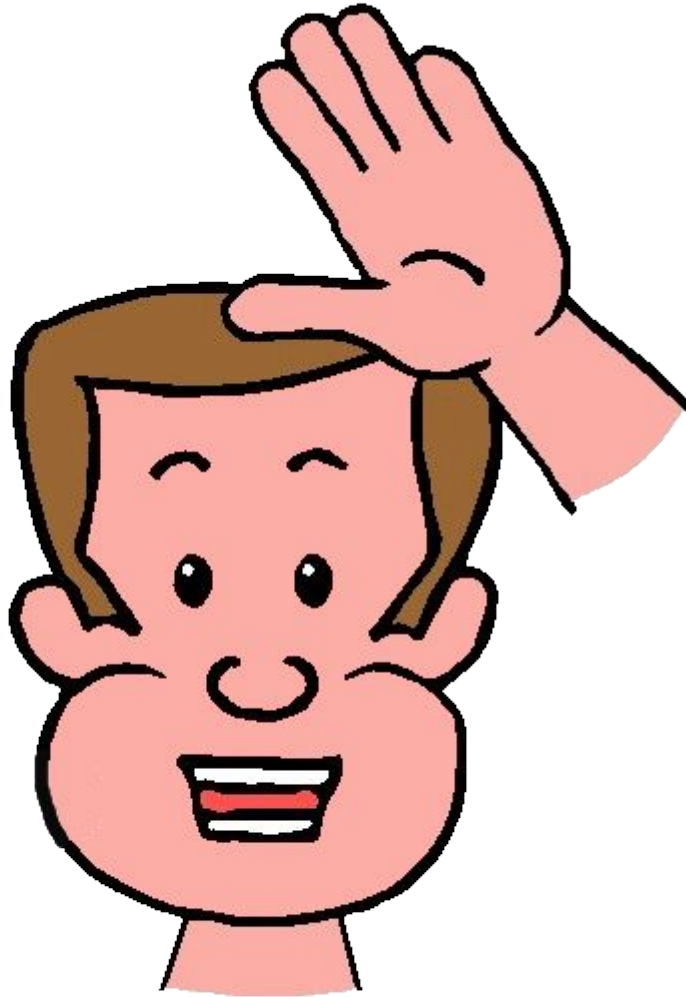
è



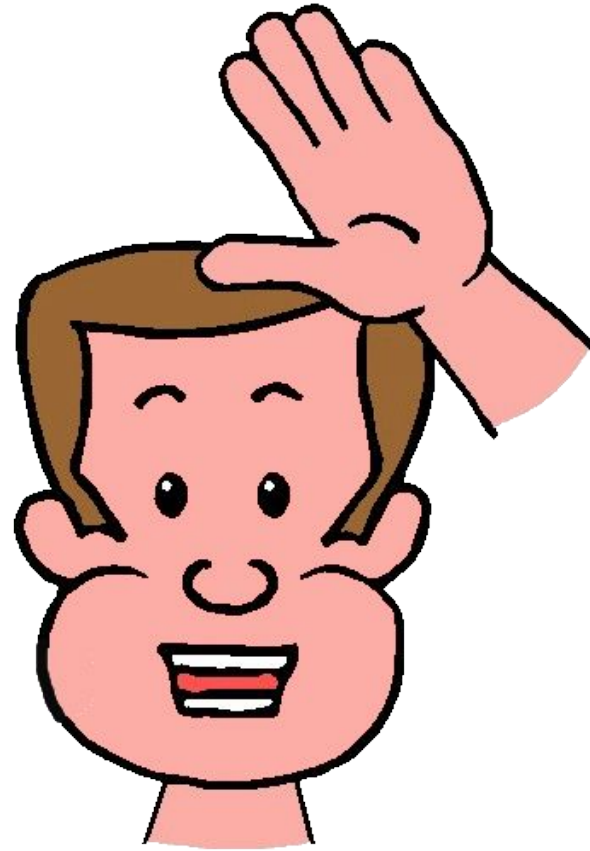
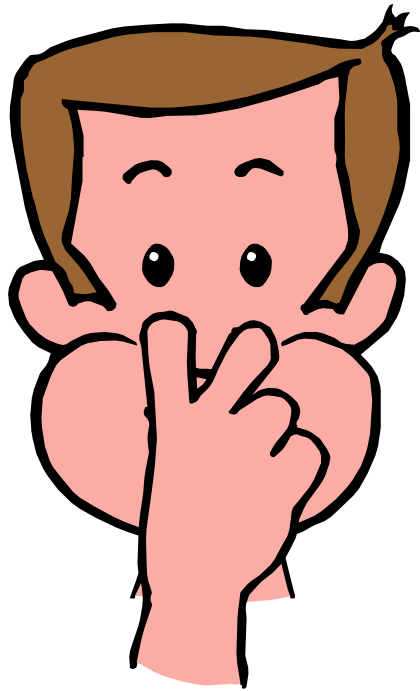
ê

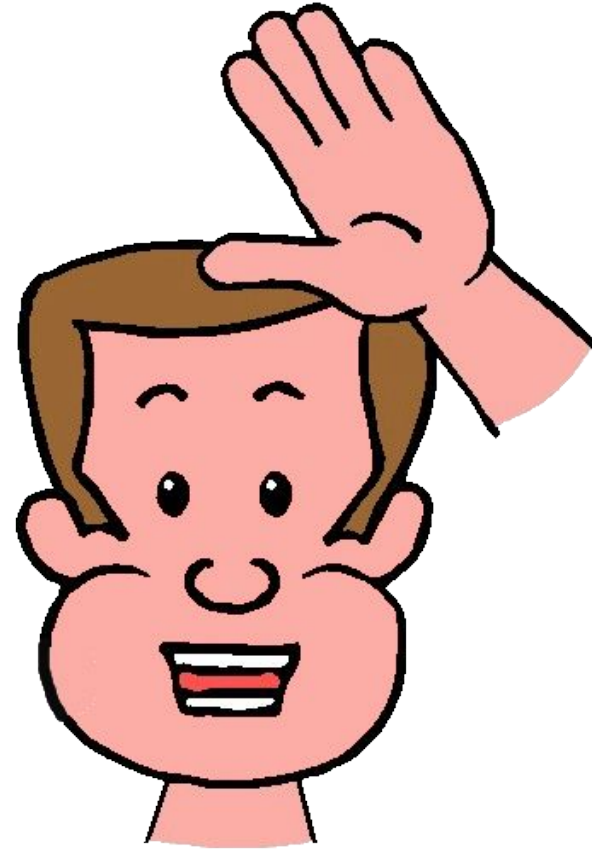
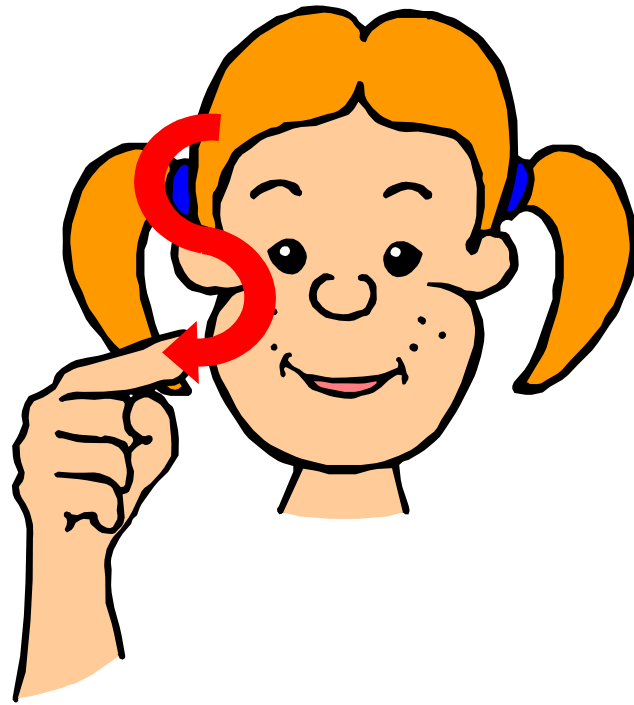


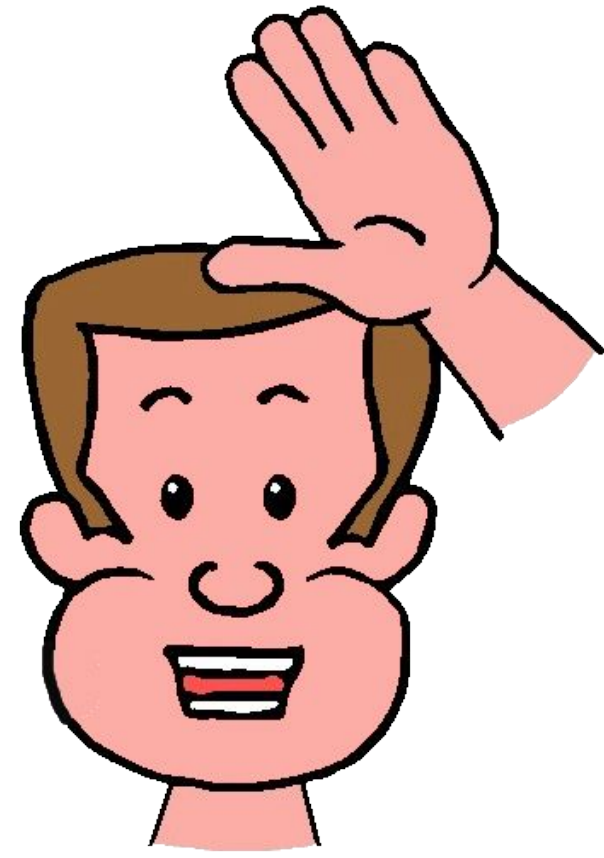
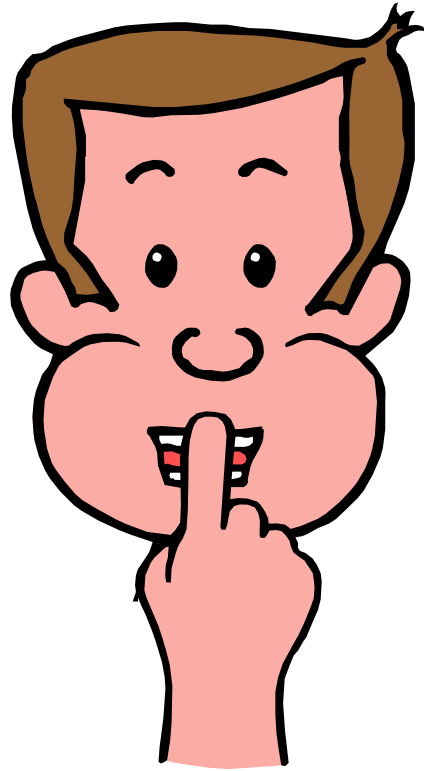
Il arrive parfois que madame é porte son anneau à l'envers ou porte un chapeau. Même si elle se croit belle, elle a l'air bête... sans arrêt.

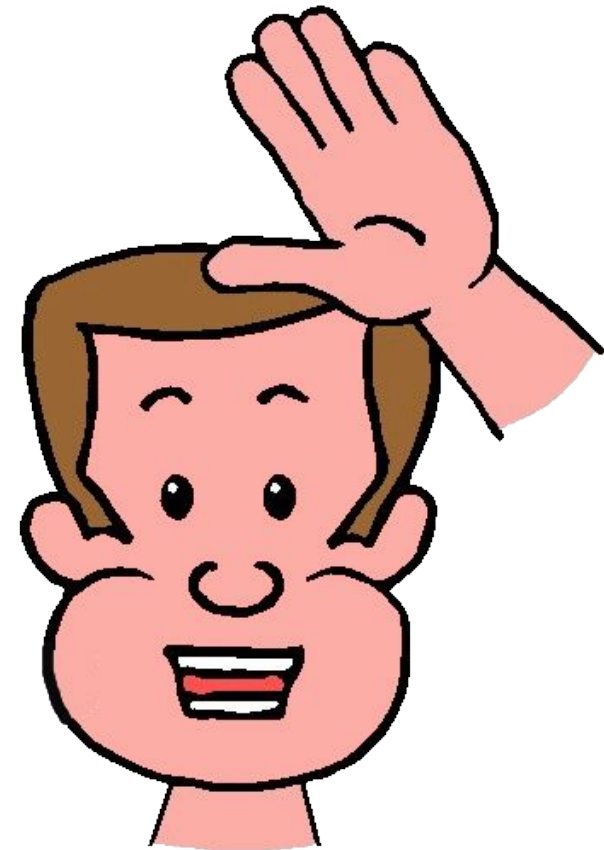
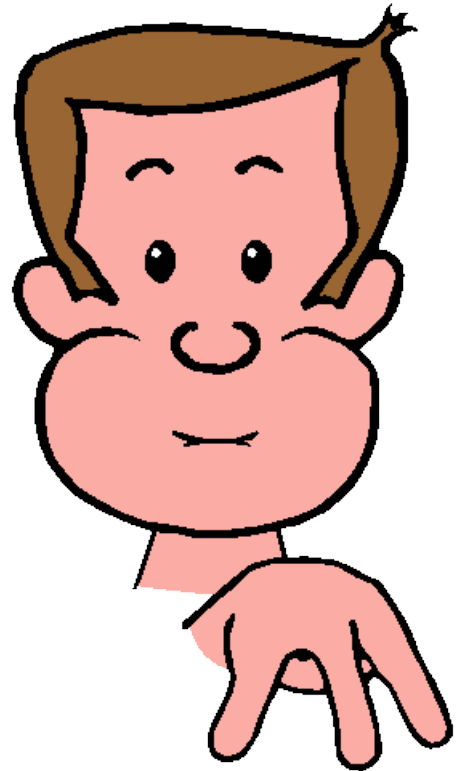


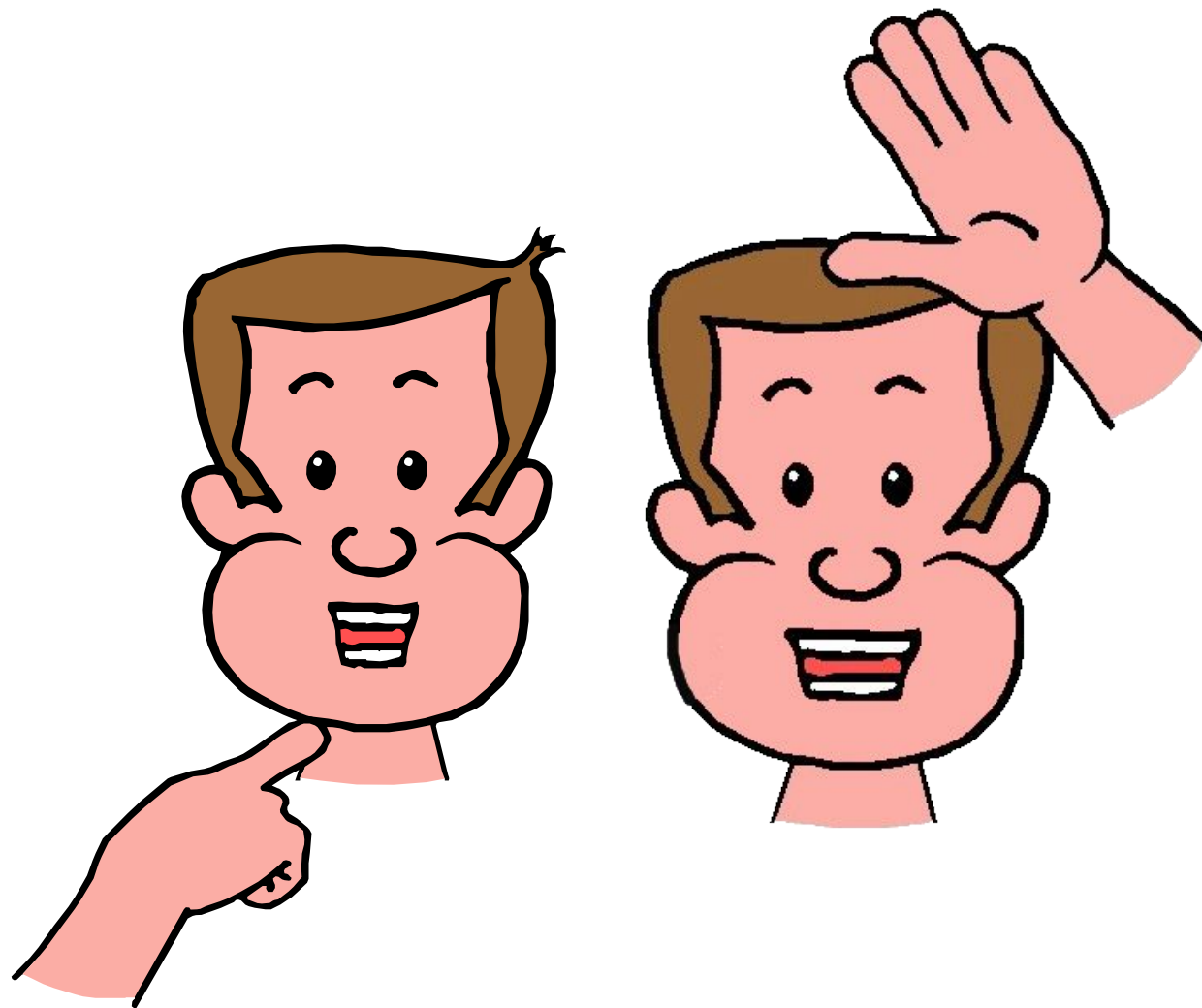
Mets ton accent en arrière, comme le « è ».  
Ouvre bien la bouche pour le dire.

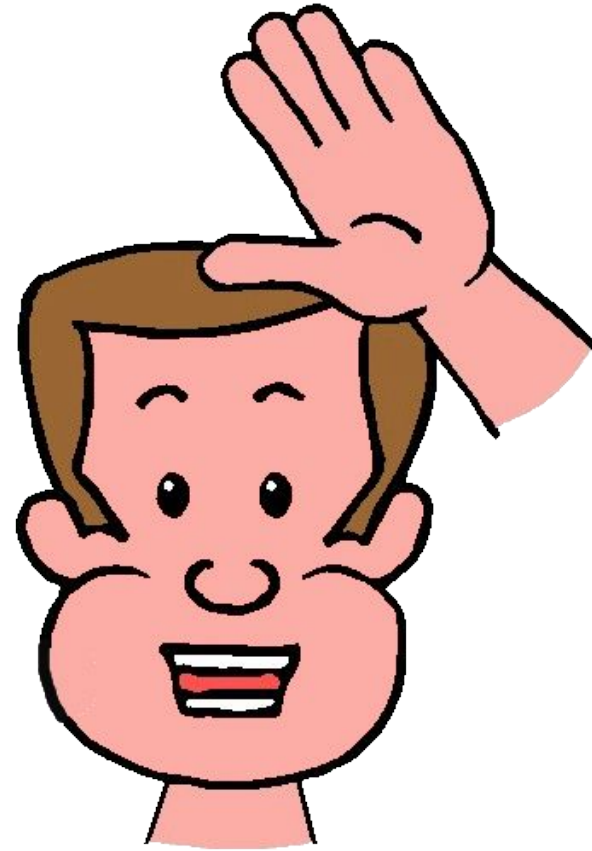
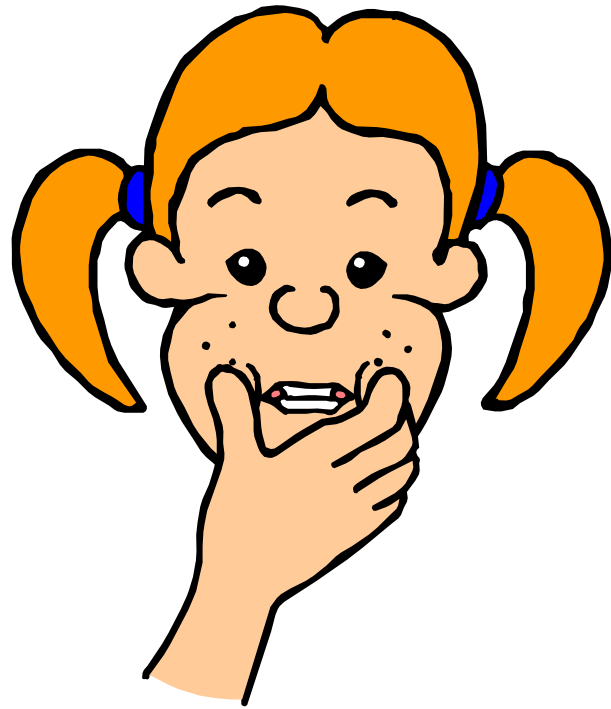




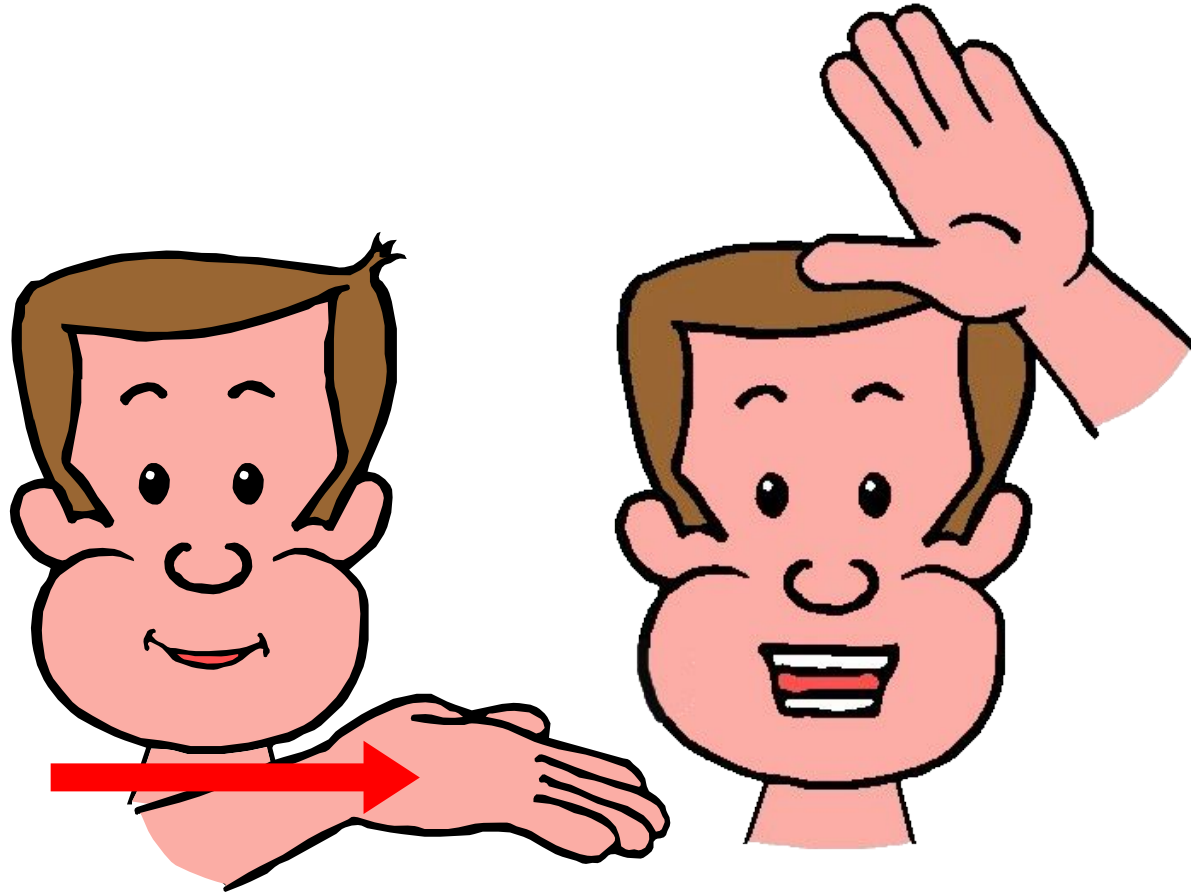




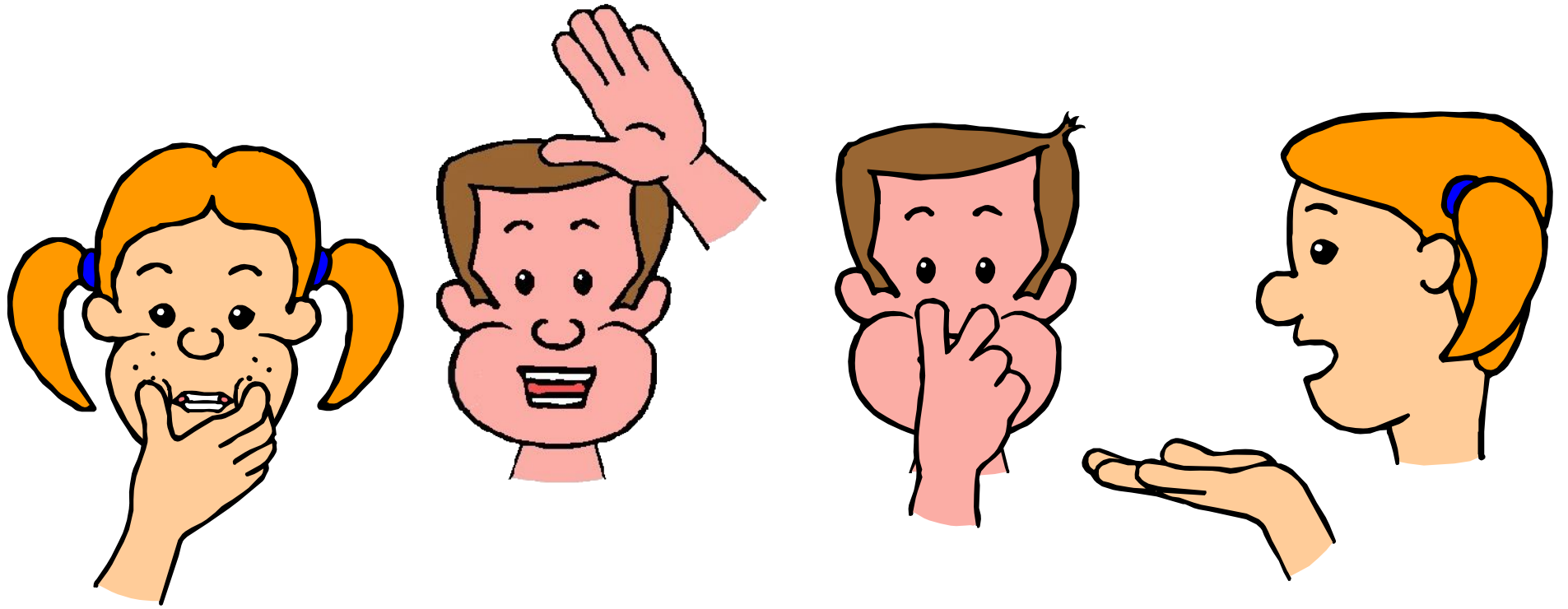


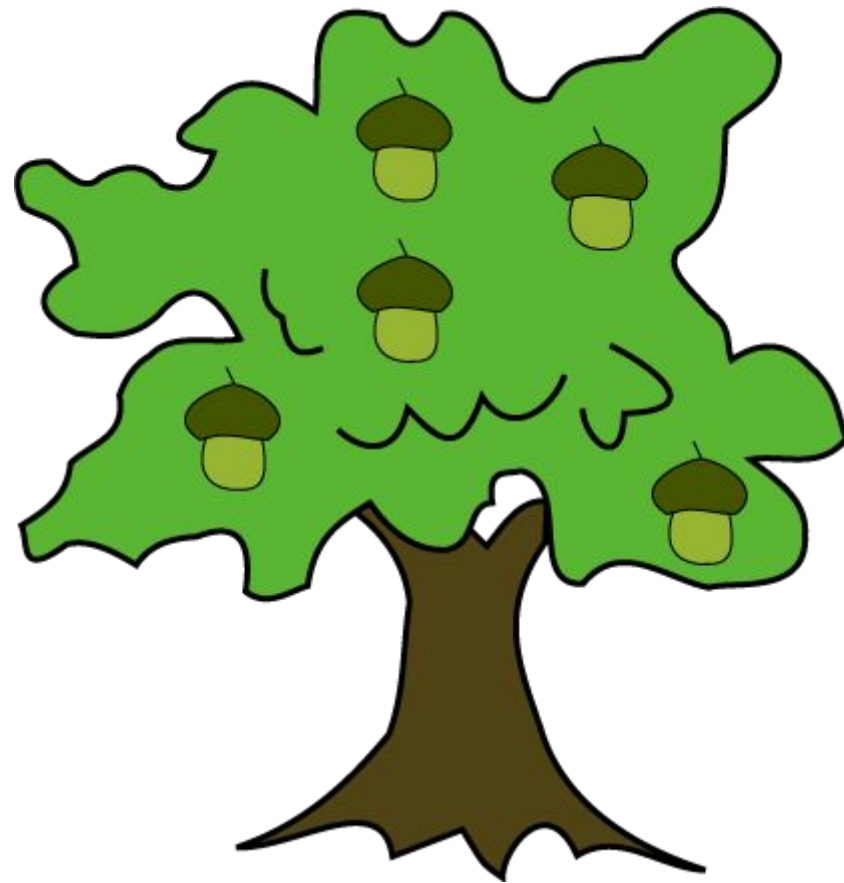




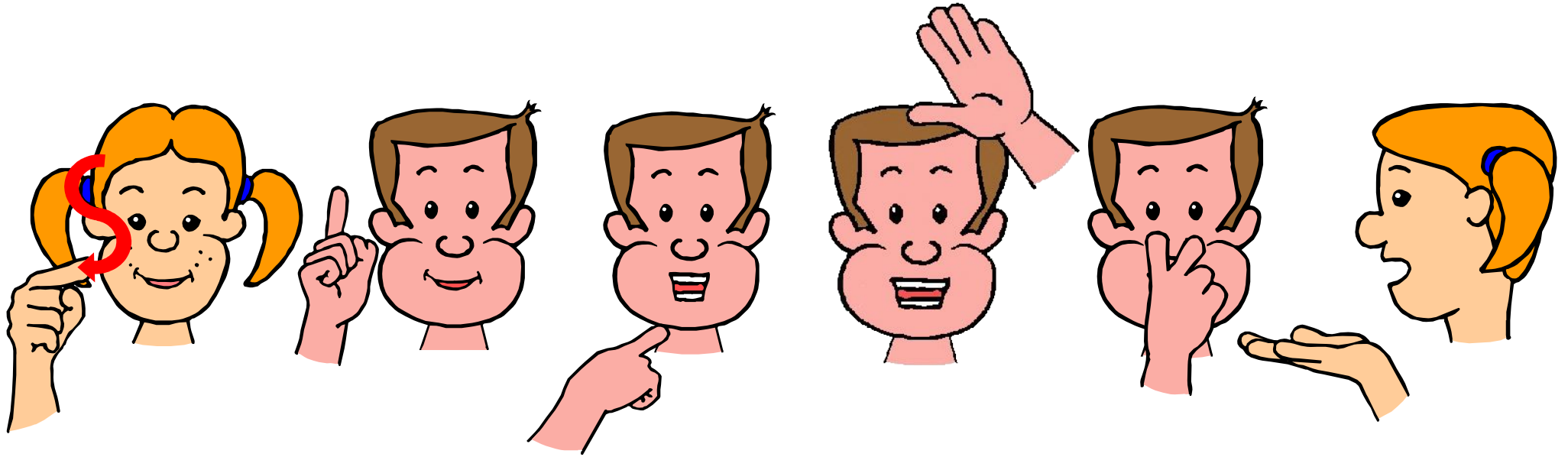






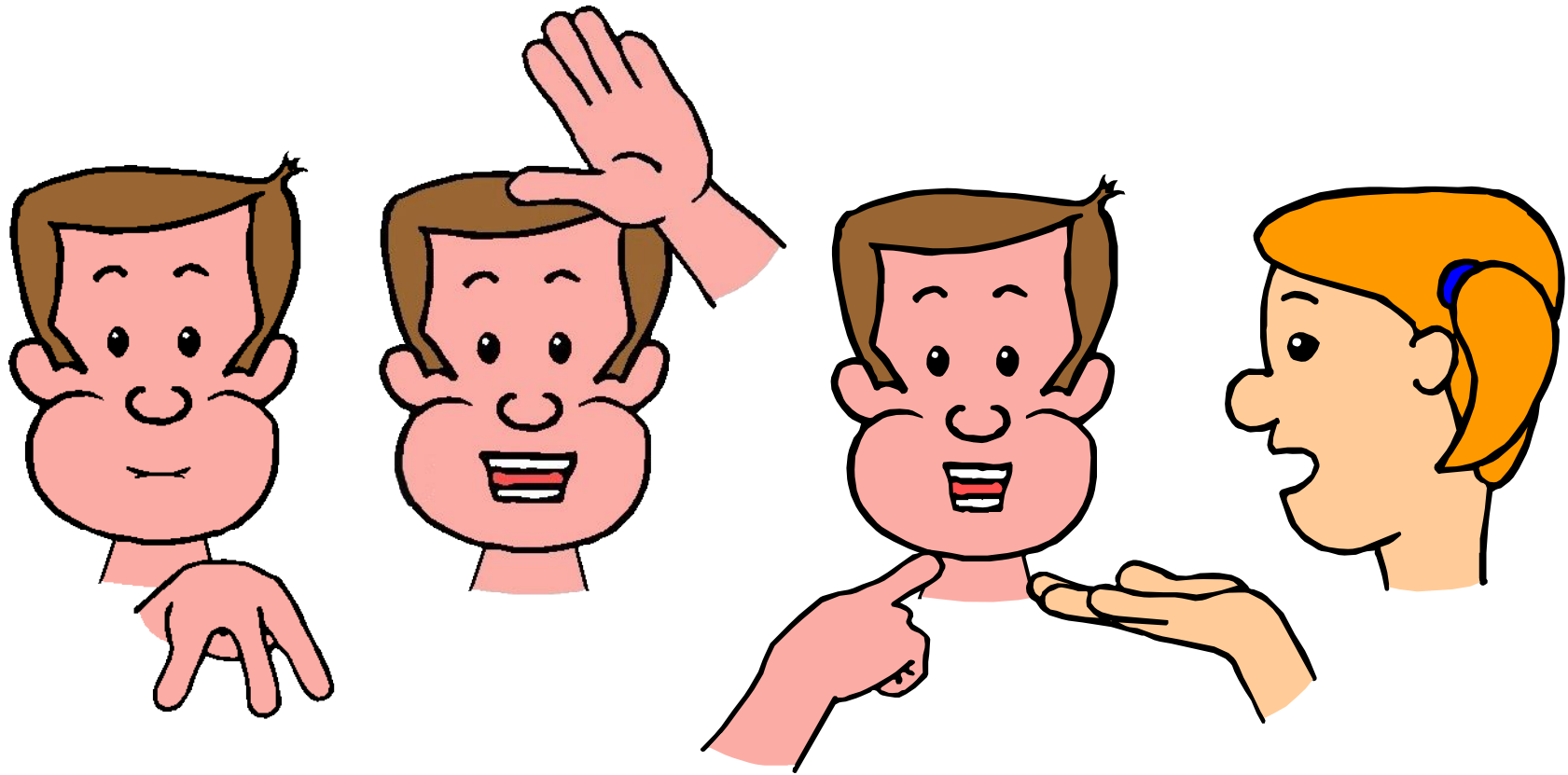


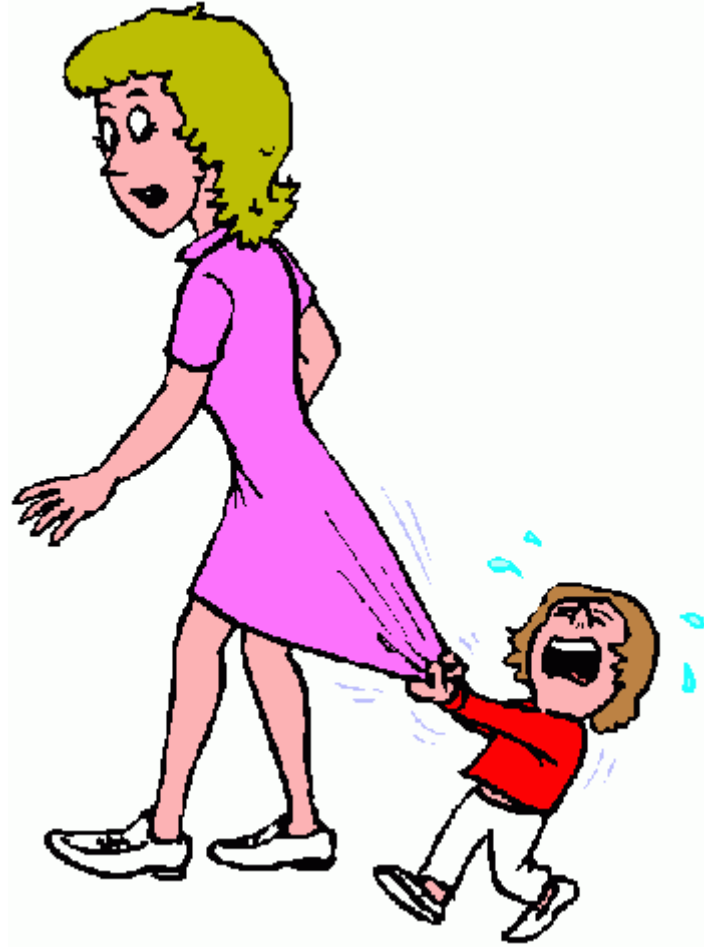
un chêne





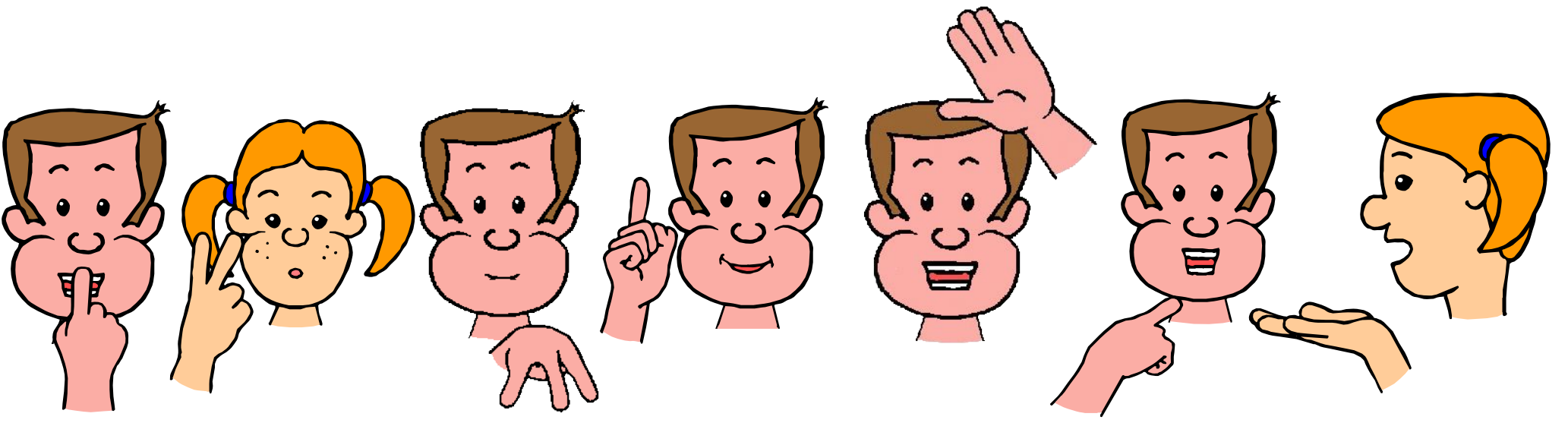
**une sirène**

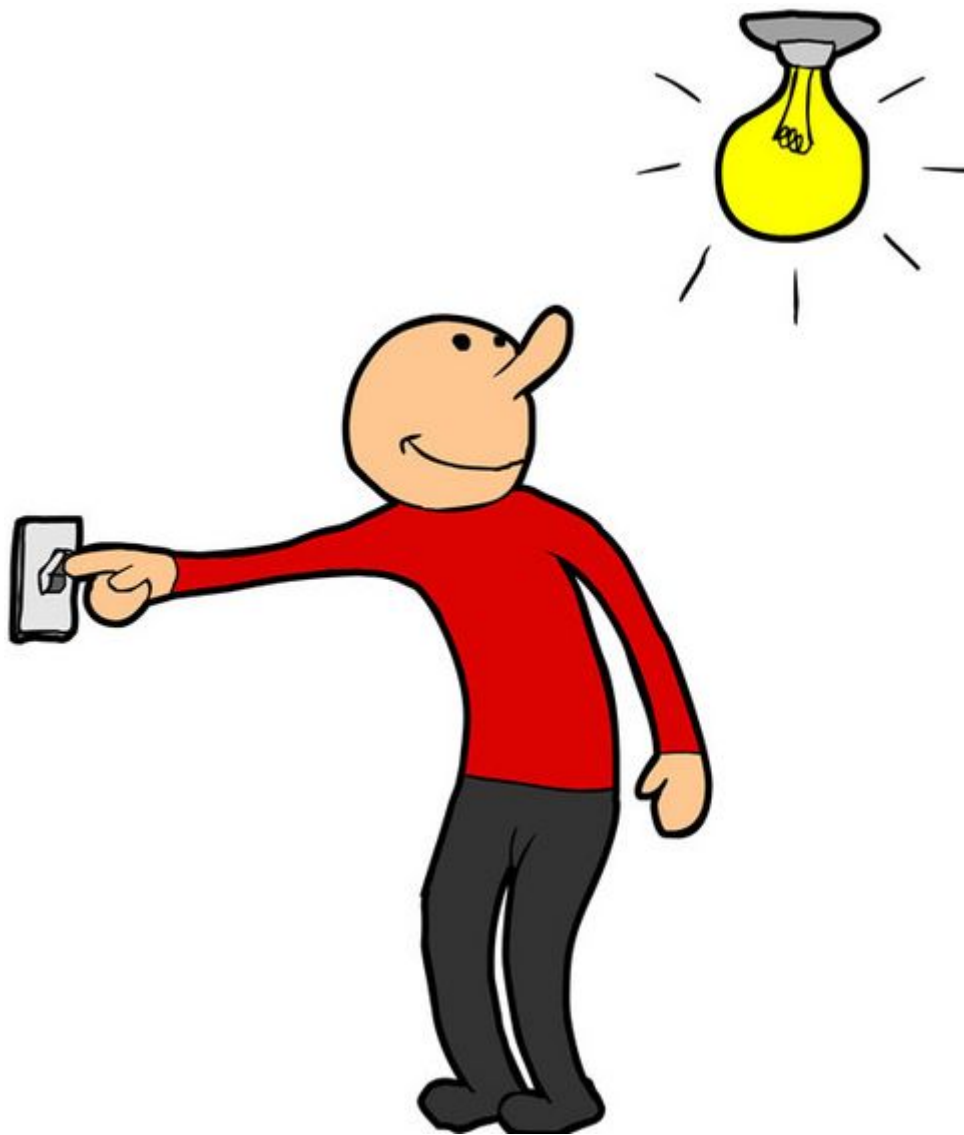




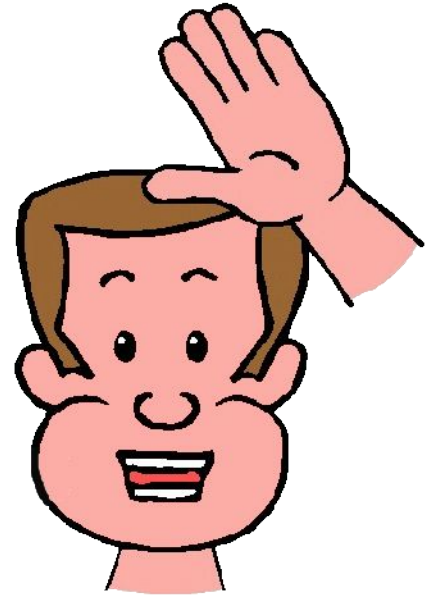
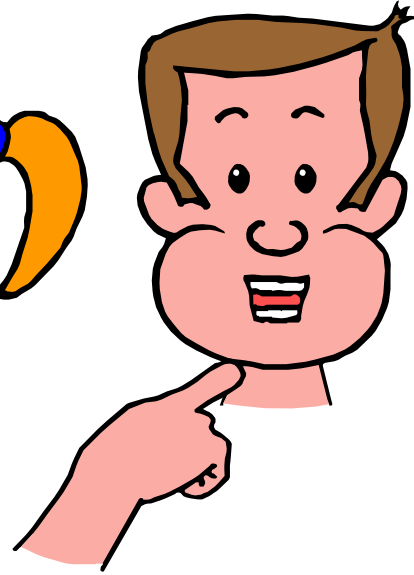
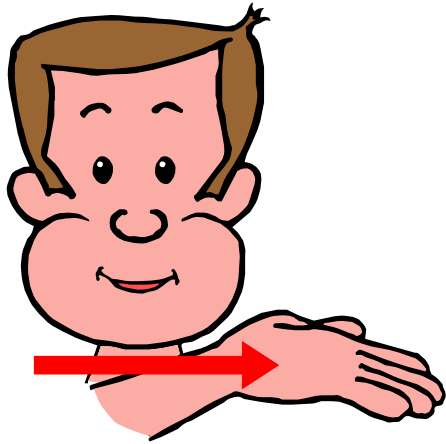
une mère





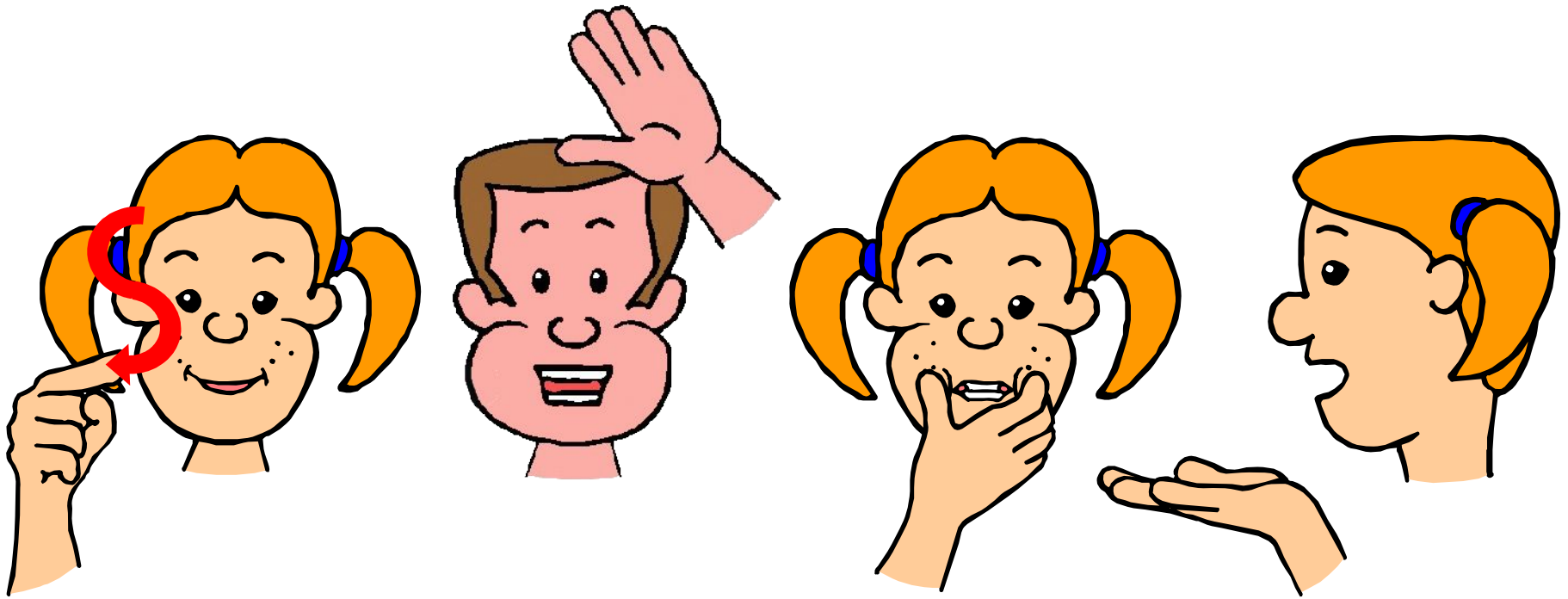


une lumière



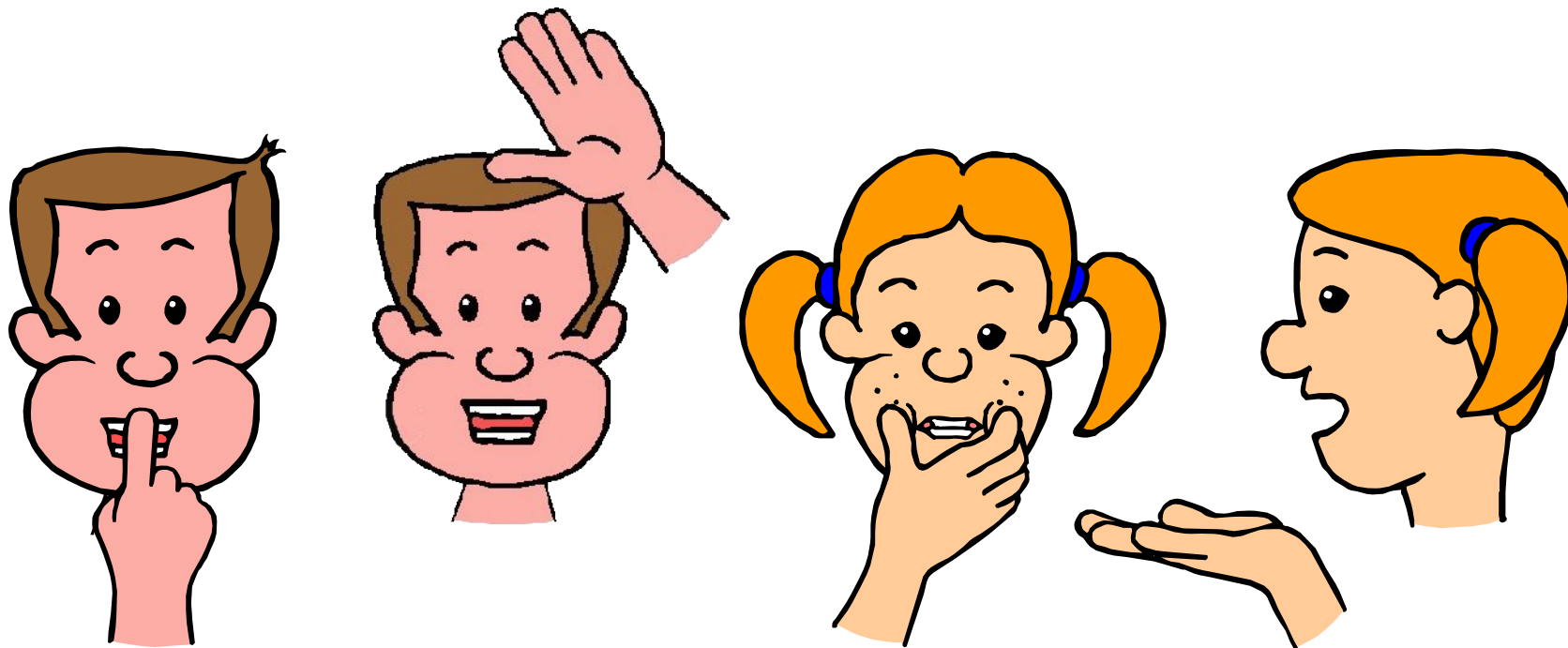


une forêt





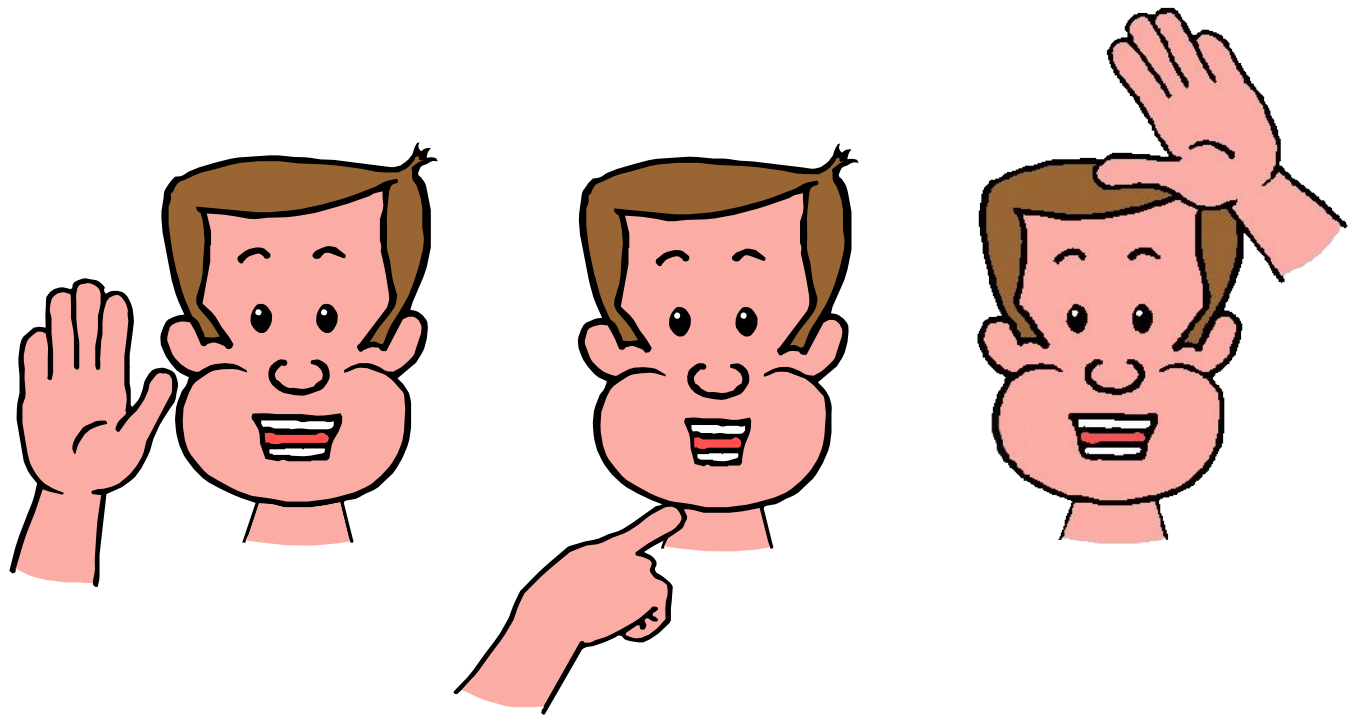
il sèche

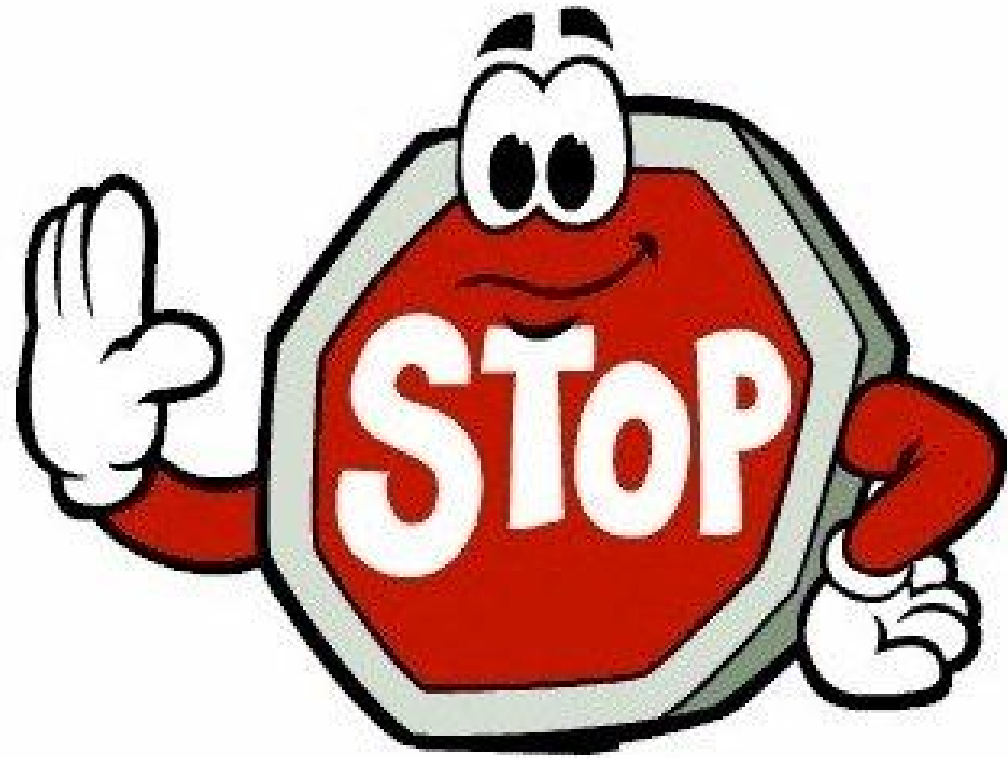




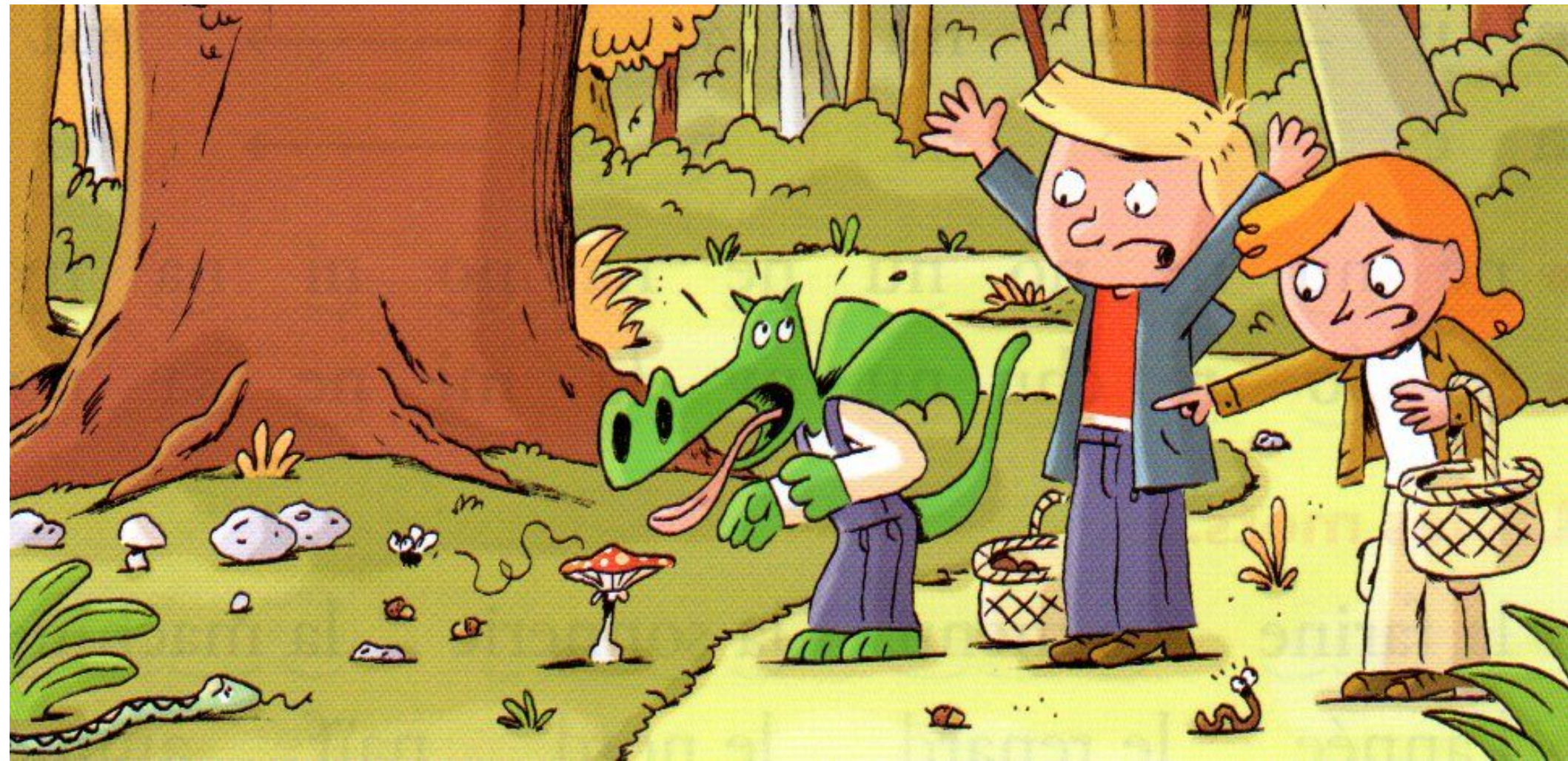
il lèche







un arrêt



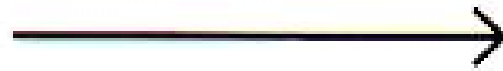
è n è F r ê

S é ch è e

ê ch é f è

m e ê n s è

r é



rè

l é



lè

s é



sè

f é



fè

m é



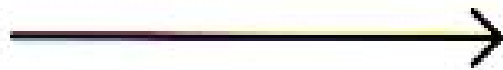
mè

ch é



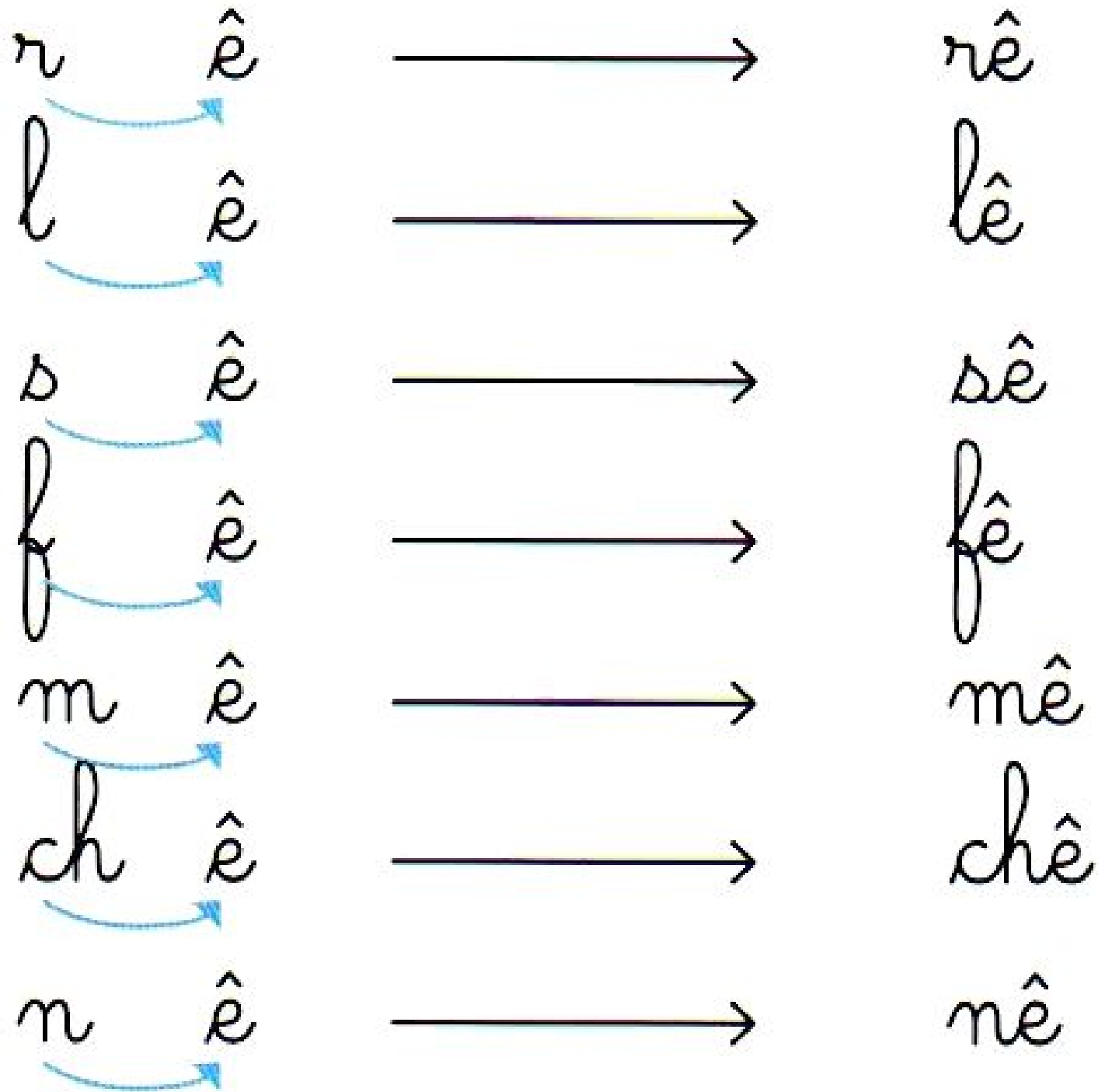
chè

n é



nè





nè lè mêmê fê rê

mè lê rê chèn sèn nè



mè fa chi rè

so mu lê

ré sè le chê

un ch<sup>ê</sup>ne

une sir<sup>è</sup>ne

un arr<sup>ê</sup>t

une m<sup>è</sup>re

la lumière

la forêt

la mère

lui-même

elle-même

il lèche

il sèche